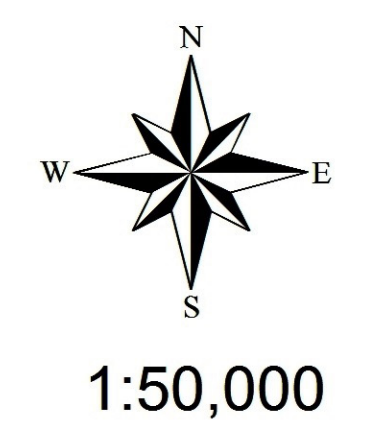


Toposheet Map Compensatory Land



No. G45T3
Scale 1:50,000

Gaya BIHAR G45S14 (72D/14)	G45T2 (72H/2)	Nawada BIHAR G45T6 (72H/6)
G45S15 (72D/15)	G45T3 (72H/3)	Kotama JHARKHAND G45T7 (72H/7)
Chatra JHARKHAND G45S16 (72D/16)	G45T4 (72H/4)	Haziribag JHARKHAND G45T8 (72H/8)

भारतीय सर्वेक्षण विभाग
SURVEY OF INDIA
1st Edition 2010 Revised 2010 Price: Rs. 70/-

CONVENTIONAL SYMBOLS

Express highway: with toll, with bridge, with distance stone	
Roads, metalled according to importance	
Roads, double cart-track according to importance	
Unmetalled road, Cart-track, Pack-track with pass, Foot-path	
Stream: with track in bed, underfed, Canal	
Dam: masonry or rock-filled, earthen, Wall	
River: dry with water channel, with island & rocks, Tidal flow	
Salt-marsh, rocks, Shoal, Swamp, Reeds	
Well: lined, unlined, Tube-well, Spring, Tank, perennial, dry	
Embankment: road or rail, bank, broken ground	
Railways, broad gauge: double, single with station, under construction	
Railways, other gauges: double, single with distance stone, do.	
Mineral line or tramway, Kin. Cables with distance stone, do.	
Conduits with sub-furrows, Rocky slopes, Cuts	
Sand features: (1) Bar (2) Sand hills (3) Sand dunes	
Towns or Villages: inhabited, deserted, Fort	
Hills: permanent, temporary, Tower, Antiquities	
Temples, Chhatra, Church, Mosque, Light Tower, Graves	
Lighthouse, Lightship, Buoy, lighted, unlighted, Anchorage	
Mine: Vine or shaft, Grass, Suck	
Palms: palmyra, other, Plantain, Coconut, Bamboo, Other trees	
Arrest: cultivated, wooded, Surveyed site	
Boundary: international	
Water: demarcated, undemarcated	
district: subdivision, taluk or taluk, forest	
Boundary pillars: surveyed, unvisited	
Heights: triangulation station, point, approximate	
Bench-mark: geodetic, levelling, canal	
Post office: Telegraph office, Overhead tank	
Rail house or inspection bungalow, Club house, Police station	
Camping ground, Forest: reserved, protected	
Spot names: administrative, locality or tribal	
Hospital, Dispensary, Veterinary Hospital / Dispensary	
Aerodrome, Helipad, Tourist site	
Power line: with pylons surveyed, with poles unsurveyed	

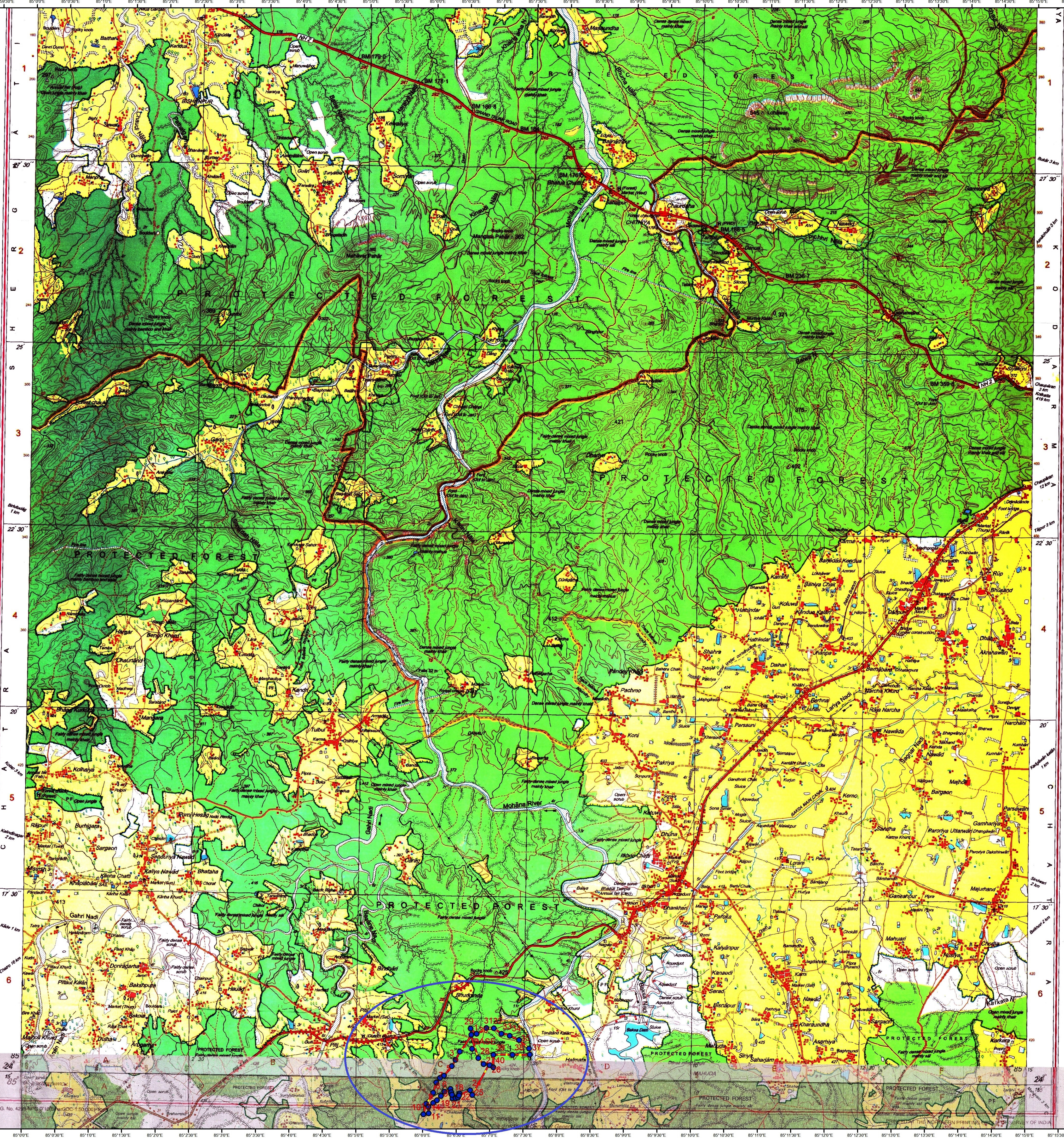
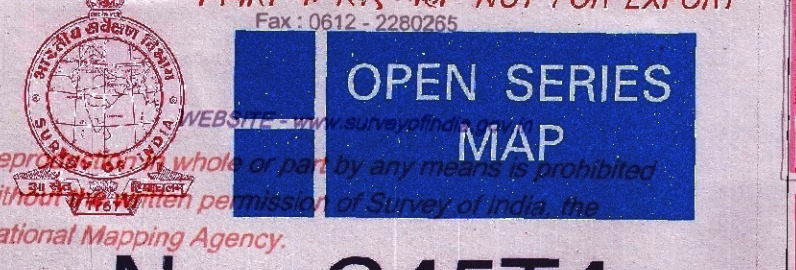
REFERENCE
NH7 National Highway No. 2

NOTES
Contours are approximate.
Heights are in metres and above Indian mean sea level.
A relative height \pm represents the appropriate height, in metres between the top and bottom of a steep slope.
The triangulated heights and contours in this sheet have not been adjusted to the height of the spheroidal bench-marks and may not be strictly in accordance with them.
The kilometre stone numbers along roads are shown in start type, e.g., '5' whereas milestone numbers are shown in upright type, e.g., '5'.
Cart tracks along canals are pebbles in dry season. Permission to use these is required from the irrigation authorities.
Numerous unlined wells exist throughout the cultivated portions of this sheet, only the important ones have been shown.
Collection is periodic and dependent on rainfall.

COMPILATION INDEX
A. Surveyed during 1977-78. Updated for major details during 2005-06.

Projection - UTM Datum - WGS 84
Magnetic Variation from True North about 1° West in 2005.
(Decreasing by about 1' annually.)
Scale 1:50,000
500 m to 1 cm
2 cm to 1 km
Contours interval 20 METRES

For further details about this map, please contact
Director
Bihar Geo-Spatial Data Centre
Survey of India, 164, Sheikhpura House, Sheikhpura



Name	Latitude	Longitude
1	24.256659	85.112053
2	24.256625	85.111807
3	24.256605	85.109007
4	24.256586	85.107082
5	24.256568	85.105184
6	24.256551	85.104161
7	24.248833	85.103254
8	24.246471	85.102535
9	24.245795	85.104413
10	24.244043	85.100663
11	24.243201	85.100145
12	24.241752	85.101433
13	24.242044	85.101356
14	24.240995	85.102247
15	24.244743	85.103537
16	24.247273	85.106817
17	24.246668	85.107032
18	24.246036	85.107182
19	24.245221	85.107366
20	24.245249	85.108193
21	24.245477	85.108717
22	24.246041	85.109936
23	24.246382	85.109966
24	24.247174	85.111683
25	24.246091	85.112274
26	24.253385	85.116328
27	24.253259	85.114914
28	24.254517	85.116449
29	24.261261	85.111158
30	24.260129	85.113077
31	24.261484	85.115029
32	24.261409	85.117297
33	24.262003	85.119317
34	24.259692	85.121337
35	24.258798	85.123634
36	24.256667	85.126077
37	24.255488	85.126429
38	24.255406	85.122116
39	24.255409	85.117407
40	24.252414	85.117435

Legend
● COORDINATES
CA LAND