

© 2006 Blackwell Publishing Ltd Journal of Internal Medicine 260: 179–187

MAP SHOWING WILD LIFE SANCTUARY AREA ON PROPOSED KANDLA VIRAMGAM LPG PIPELINE ROUTE - KUTCH DISTRICT



निर्वात के लिए नहीं NOT FOR EXPORT

OPEN SERIES
MAP

No. F42E8
Scale 1:50,000

F42E3 (41/3)	F42E7 (41/7)	F42E11 (41/11)
F42E4 (41/4)	F42E8 (41/8)	F42E12 (41/12)
F42K1 (41/1)	F42K5 (41/5)	F42K9 (41/9)

भारतीय सर्वेक्षण विभाग SURVEY OF INDIA

1st Edition 2011. Price : Rs. 70/-

CONVENTIONAL SYMBOLS

Express highway with toll with bridge, with distance shown	
Roads, metalled according to importance	
Roads, double cartway according to importance	
Unmetalled road. Cart track. Pack-track with pass. Foot path	
Stream with track in bed. Underdrain. Canal	
Dam, masonry or rock filled with water	
River dry with water channel, with island & rocks. Tidal river	
Submerged rocks, Shoal, Swamp, Reeds	
Wells, lined, unlined. Tube-well. Spring. Tank. Perennial, dry	
Embankment, road or rail, bank, broken ground	
Railways, broad gauge, double, single, with station, under construction	
Railways, other gauges, double, single, with station, under construction	
Mineral line or tramway. Kin. Cutting with tunnel	
Contours with sub-features. Rocky slopes. Cliffs	
Sand features (V-shaped, ridge, depression) (Dike, breakwater)	
Towns or villages, inhabited, deserted, Fort	
Wells, permanent, temporary, Tower, Jetty, Bridge	
Temples, Chhatri, Church, Mosque, Sigh, Tomb, Grave	
Lighthouse, Lightship, Buoy, Light, unlighted, Anchorage	
Mine. Vine on hillside. Grass. Scrub	
Plains, papyrus, other, Forest, Conifer, Bamboo, Other trees	
Area, cultivated, wooded, Surveyed tree	
Boundary, International	
State, demarcated, undemarcated	
District, sub-division, taluk or block, forest	
Boundary pillar, surveyed, unlocated	
Height, trigonometric station, spot, approximate	
Bench-mark, geodetic, tertiary, canal	
Post office, Overhead tank	
Rail house or inspection bungalow, Circuit house, Police station	
Camping ground, Forest, reserved, protected	
Railway station, administrative, locality or shed	
Hospital, Dispensary, Veterinary, Hospital / Dispensary	
Aerodrome, Heliport, Tourist site	
Power line, with pylons surveyed, with poles unsurveyed	

REFERENCE

NH 84 National Highway No. 84

NOTES

Heights and Contours have not been shown.
A station height, e.g., 50, represents the approximate height, in metres, between the top and bottom of a steep slope.
Area in this sheet other than that of Bhachhu Khela, falling in squares A 1, B 1, C 1 is not included in any sheet but is a part of Kutch District.
Collection is periodic and dependent on rainfall.
Tanks, shown dry, in this area, usually contain water from July to November.

COMPILED INDEX

A. Surveyed during 1953-54. Updated for major details during 2003-04.

Projection - UTM Datum - WGS 84

Magnetic Variation from True North about 1° West in 2005.
(Decreasing by about 1° annually)

1:50,000

Scale 1:50,000

For further details about this map, please contact

Director

Gujarat, Daman & Diu Geo-Spatial Data Centre

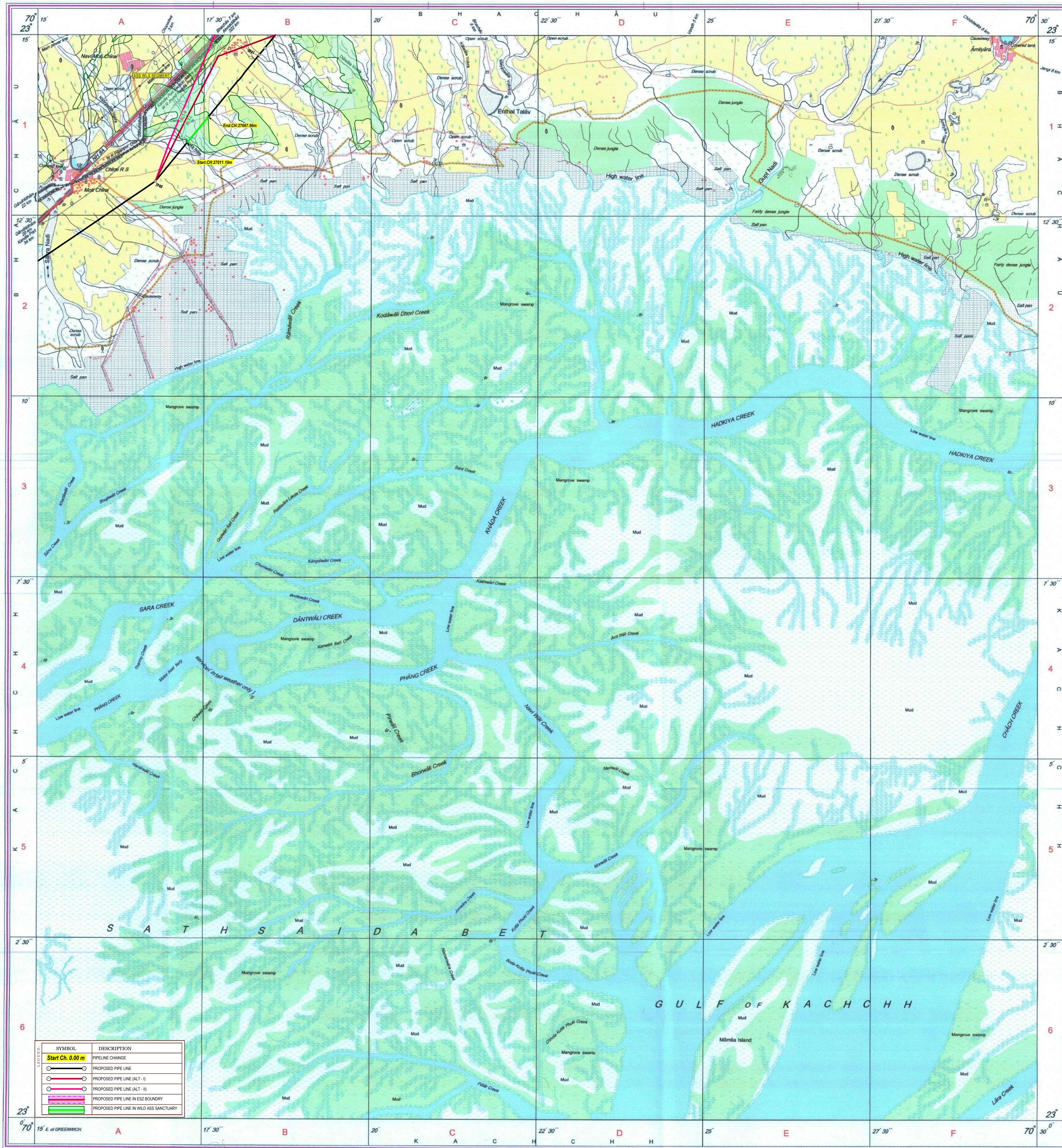
Survey of India, Sector-10 (A)

Gandhinagar.

WEBSITE - www.surveyofindia.gov.in

Reproduction in whole or part by any means is prohibited without the written permission of Survey of India, the National Mapping Agency.

GOVERNMENT OF INDIA COPYRIGHT, 2011.



REG. No. SPS/11/100 A.D. GEO-150/2005
जुलान, श्रवण व दिय / Gujarat, Daman & Diu
भूगोलीय आकृति केंद्र / Geo Spatial Data Centre
भारतीय सर्वेक्षण विभाग / Survey of India
भारत में प्रकाशित, नवीं प्रकाशना, केन्द्र में प्रकाशित में प्रकाशित
Published under the direction of Swarna Subba Rao, S.E., Surveyor General of India
Survey of India, HSRBarkala Estate, Post Box No.37, Dehra Dun-248001 (Uttarakhand)
Department of Science & Technology, Government of India.
PRINTED AT THE SOUTHERN PRINTING GROUP OF SURVEY OF INDIA.





निर्यात के लिए नहीं NOT FOR EXPORT

OPEN SERIES
MAP

No. F42E16

Scale 1:50,000

F42E11 (41/11)	F42E15 (41/15) Kutchh GUJARAT	F42F3 (41/13)
F42E12 (41/12)	F42E16 (41/16)	F42F4 (41/14)
F42K9 (41/19) Jamnagar GUJARAT	F42K13 (41/13) Jamnagar GUJARAT	F42L1 (41/11)

भारतीय सर्वेक्षण विभाग

SURVEY OF INDIA

1st Edition 2011.

Price: Rs. 118/-

CONVENTIONAL SYMBOLS

Express highway with toll, with bridge, with distance stone	
Roads, installed according to importance	
Roads, double carriageway according to importance	
Unsettled road, Cart-track, Pack-track with pass, Foot-path	
Streams with track in bed, underdrain, Canal	
Dam, reservoir or rock-fall, waterfalls, Water	
River, dry with water channel, with island & rocks, Tidal river	
Submerged rocks, Shoal, Swamp, Reeds	
Wells, lined, unfired, Tube-well, Spring, Tanks, perennial, dry	
Embankments, road or rail, trestle, Broken ground	
Railways, broad gauge, double, single with station, under construction	
Railways, other gauges, double, single with station, under construction	
Mineral line or tramway, Kila, Cutting with tunnel	
Contours with sub-features, Rocky slopes, Cliffs	
Sand features (Tidal, (Zonal-Hill) permanent), (Discontinuous)	
Towns or Villages, inhabited, deserted, Fort	
Huts, permanent, temporary, Tower, Antiquities	
Temples, Chhatra, Chhatra, Mosque, Jaina, Temple, Shrine	
Lighthouse, Light-house, Beacon, lighted, unlighted, Anchorage	
Mine, Veneer, or trestle, Green, Scrub	
Palm, palm, other, Plantain, Conifer, Bamboo, Other trees	
Areas, cultivated, wooded, Surveyed tree	
Boundary, international	
State, demarcated, undemarcated	
District, sub-district, taluk or Taluk, forest	
Boundary pillars, surveyed, unvisited	
Heights, triangulated, station, point, approximate	
Bench-mark, geodetic, tertiary, canal	
Post office, Overhead tank	
Rail station or inspection halting place, Goods house, Police station	
Camping ground, Forest, reserved, protected	
Spaced names, administrative, locality or tribal	
Hospital, Dispensary, Veterinary, Hospital / Dispensary	
Aerodrome, Helipad, Tourist site	
Power line, with pylons surveyed, with poles unsurveyed	

REFERENCE

NY 64 National Highway No. 6A

NOTES

Heights and Contours have not been shown.
A relative height, if represented, is the approximate height, in metres, between the top and bottom of a steep slope.
The area of Kutch District in this sheet is not included in any block.
Tanks, shown dry, in this area usually contain water from July to December.

COMPILED INDEX

A. Surveyed during 1993-94. Updated for major details during 2003-04.

Projection - UTM Datum - WGS 84

Magnetic Variation from True North about 1° West in 2005.

(Decreasing by about 1° annually).

1:50,000

For further details about the map, please contact

Director

Gujarat, Daman & Diu Geo-Spatial Data Centre

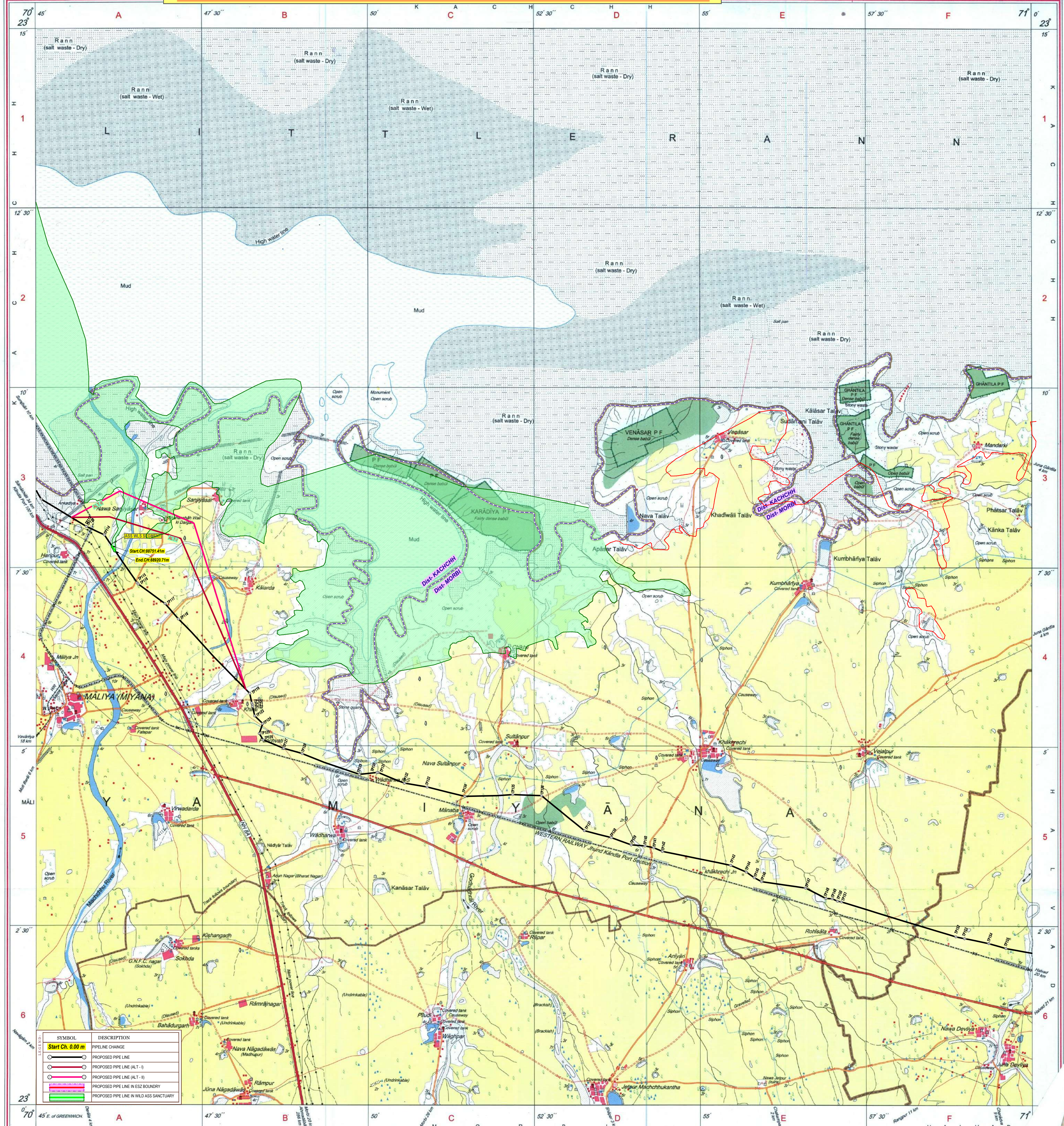
Survey of India, Sector-10 (A)

Gandhinagar.

WEBSITE - www.surveyofindia.gov.in

Reproduction in whole or part by any means is prohibited
without the written permission of Survey of India, the
National Mapping Agency.

MAP SHOWING WILD LIFE SANCTUARY AREA ON PROPOSED KANDLA VIRAMGAM LPG PIPELINE ROUTE - KUTCH DISTRICT



REG. No. 9680-SFD-D-11 (G.D. & D. G.D.C. 150,000) 1508-15

भारत के सर्वेक्षक जनक मणि त्रिपाठी, एम.एस.सी. (भूविज्ञान), पी.जी. डिप्लोमा (कार्टोग्राफी) (आई.टी.सी. यूरोपियन) के निदेश पर प्रकाशित,
Published under the direction of Rajendra Mani Tripathi, M.Sc. (Physics), P.G. Diploma (Carto) (I.T.C. The Netherlands) Surveyor General of India,
Survey of India, Haldibagh Estate, Post Box No. 37, Dehra Dun - 248001 (Uttarakhand),
Department of Science & Technology, Government of India.

PRINTED AT THE SOUTHERN PRINTING GROUP

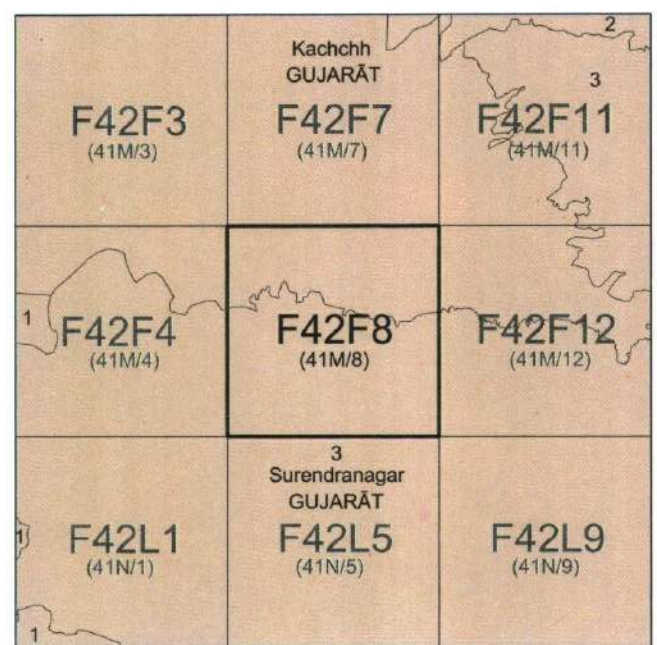


निर्वात के लिए नहीं NOT FOR EXPORT

OPEN SERIES
MAP

No. F42F8

Scale 1:50,000



भारतीय सर्वेक्षण विभाग

SURVEY OF INDIA

1st Edition 2011.

Price: Rs.118/-

CONVENTIONAL SYMBOLS



NOTES :-

Heights and Contours have not been shown.
A relative height, Δ , represents the approximate height, in metres, between the top and bottom of a steep slope.
Tanks, shown dry, in this area usually contain water from July to January.
The area of Kutch District in this sheet is not included in any block.

COMPILATION INDEX

A Surveyed during 1985-87 updated for major details during 1995-96 and 2005-06.

Projection - UTM Datum - WGS 84

Magnetic Variation from True North about $\frac{1}{2}^\circ$ West in 2005.

1:50,000

Scale 1:50,000

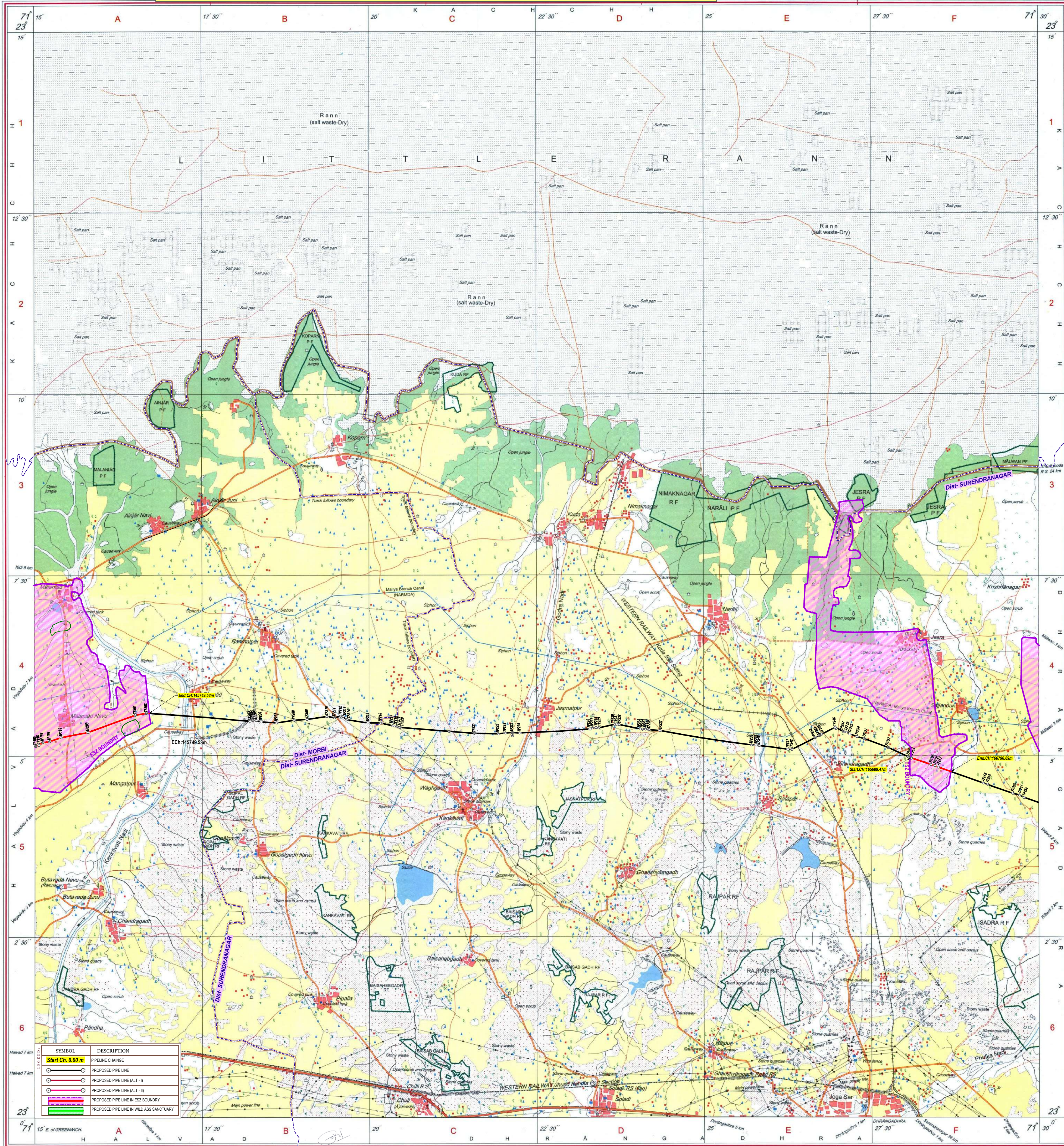
For further details about this map, please contact

Director
Gujarat, Daman & Diu Geo-Spatial Data Centre
Survey of India, Sector-10 (A)
Gandhinagar.

WEBSITE - www.surveyofindia.gov.in

Reproduction in whole or part by any means is prohibited
without the written permission of Survey of India, the
National Mapping Agency.

MAP SHOWING WILD LIFE SANCTUARY AREA ON PROPOSED KANDLA VIRAMGAM LPG PIPELINE ROUTE - KUTCH DISTRICT



REG. NO. 917-SPG D (1) G D C 1:50,000 1:50,000 1:50,000
Printed under the direction of Rajendra Man Tripathi, M.Sc. (Physics), P.G. Diploma (Carto) ITC, The Netherlands
Survey of India, Hishibarkata Estate, Post Box No. 37, Dehra Dun - 248001 (Uttarakhand),
Department of Science & Technology, Government of India.
PRINTED AT THE SOUTHERN PRINTING GROUP OF SURVEY OF INDIA

MAP SHOWING WILD LIFE SANCTUARY AREA ON PROPOSED KANDLA VIRAMGAM LPG PIPELINE ROUTE - KUTCH DISTRICT



निर्वात के लिए नहीं NOT FOR EXPORT

OPEN SERIES MAP

No. F42F12

Scale 1:50,000

F42F7 (41M/7) Kutch GUJARAT	F42F11 (41M/11) Kutch GUJARAT	F42F15 (41M/15) Kutch GUJARAT
F42F8 (41M/8) Kutch GUJARAT	F42F12 (41M/12) Kutch GUJARAT	F42F16 (41M/16) Kutch GUJARAT
F42L5 (41N/5) Kutch GUJARAT	F42L9 (41N/9) Kutch GUJARAT	F42L13 (41N/13) Kutch GUJARAT

1 Ahmedabad, GUJARAT.
2 Patan, GUJARAT.

भारतीय सर्वेक्षण विभाग

SURVEY OF INDIA

1st Edition 2009.

Price : Rs. 50/-

CONVENTIONAL SYMBOLS

Express highway with toll with bridge with distance stone	
Roads, metalled according to importance	
Roads, double carriageway according to importance	
Unmetalled road. Cart track. Rickshaw with passenger. Foot path	
Stream with track in bed, crossbed, canal	
Dam, masonry or rock-filled, earthen, weir	
River, dry with water channel, with island & rocks. Tide river	
Submerged rocks. Shoal. Swamp. Reeds	
Wells, lined, unlined. Tube-well. Spring. Tank. Permanent dry	
Entomological nest or soil bank. Green ground	
Railways, broad gauge, double, single with station, under construction	
Railways, other gauges, double, single with distance stone, do.	
Mineral line or tramway. Kin. Cutting with tunnel	
Coastline with sub-turbine. Rocky slopes, cliffs	
Sand dunes (1M, 2M, 3M, 4M, 5M, 6M, 7M, 8M, 9M, 10M, 11M, 12M, 13M, 14M, 15M, 16M, 17M, 18M, 19M, 20M, 21M, 22M, 23M, 24M, 25M, 26M, 27M, 28M, 29M, 30M, 31M, 32M, 33M, 34M, 35M, 36M, 37M, 38M, 39M, 40M, 41M, 42M, 43M, 44M, 45M, 46M, 47M, 48M, 49M, 50M, 51M, 52M, 53M, 54M, 55M, 56M, 57M, 58M, 59M, 60M, 61M, 62M, 63M, 64M, 65M, 66M, 67M, 68M, 69M, 70M, 71M, 72M, 73M, 74M, 75M, 76M, 77M, 78M, 79M, 80M, 81M, 82M, 83M, 84M, 85M, 86M, 87M, 88M, 89M, 90M, 91M, 92M, 93M, 94M, 95M, 96M, 97M, 98M, 99M, 100M, 101M, 102M, 103M, 104M, 105M, 106M, 107M, 108M, 109M, 110M, 111M, 112M, 113M, 114M, 115M, 116M, 117M, 118M, 119M, 120M, 121M, 122M, 123M, 124M, 125M, 126M, 127M, 128M, 129M, 130M, 131M, 132M, 133M, 134M, 135M, 136M, 137M, 138M, 139M, 140M, 141M, 142M, 143M, 144M, 145M, 146M, 147M, 148M, 149M, 150M, 151M, 152M, 153M, 154M, 155M, 156M, 157M, 158M, 159M, 160M, 161M, 162M, 163M, 164M, 165M, 166M, 167M, 168M, 169M, 170M, 171M, 172M, 173M, 174M, 175M, 176M, 177M, 178M, 179M, 180M, 181M, 182M, 183M, 184M, 185M, 186M, 187M, 188M, 189M, 190M, 191M, 192M, 193M, 194M, 195M, 196M, 197M, 198M, 199M, 200M, 201M, 202M, 203M, 204M, 205M, 206M, 207M, 208M, 209M, 210M, 211M, 212M, 213M, 214M, 215M, 216M, 217M, 218M, 219M, 220M, 221M, 222M, 223M, 224M, 225M, 226M, 227M, 228M, 229M, 230M, 231M, 232M, 233M, 234M, 235M, 236M, 237M, 238M, 239M, 240M, 241M, 242M, 243M, 244M, 245M, 246M, 247M, 248M, 249M, 250M, 251M, 252M, 253M, 254M, 255M, 256M, 257M, 258M, 259M, 260M, 261M, 262M, 263M, 264M, 265M, 266M, 267M, 268M, 269M, 270M, 271M, 272M, 273M, 274M, 275M, 276M, 277M, 278M, 279M, 280M, 281M, 282M, 283M, 284M, 285M, 286M, 287M, 288M, 289M, 290M, 291M, 292M, 293M, 294M, 295M, 296M, 297M, 298M, 299M, 300M, 301M, 302M, 303M, 304M, 305M, 306M, 307M, 308M, 309M, 310M, 311M, 312M, 313M, 314M, 315M, 316M, 317M, 318M, 319M, 320M, 321M, 322M, 323M, 324M, 325M, 326M, 327M, 328M, 329M, 330M, 331M, 332M, 333M, 334M, 335M, 336M, 337M, 338M, 339M, 340M, 341M, 342M, 343M, 344M, 345M, 346M, 347M, 348M, 349M, 350M, 351M, 352M, 353M, 354M, 355M, 356M, 357M, 358M, 359M, 360M, 361M, 362M, 363M, 364M, 365M, 366M, 367M, 368M, 369M, 370M, 371M, 372M, 373M, 374M, 375M, 376M, 377M, 378M, 379M, 380M, 381M, 382M, 383M, 384M, 385M, 386M, 387M, 388M, 389M, 390M, 391M, 392M, 393M, 394M, 395M, 396M, 397M, 398M, 399M, 400M, 401M, 402M, 403M, 404M, 405M, 406M, 407M, 408M, 409M, 410M, 411M, 412M, 413M, 414M, 415M, 416M, 417M, 418M, 419M, 420M, 421M, 422M, 423M, 424M, 425M, 426M, 427M, 428M, 429M, 430M, 431M, 432M, 433M, 434M, 435M, 436M, 437M, 438M, 439M, 440M, 441M, 442M, 443M, 444M, 445M, 446M, 447M, 448M, 449M, 450M, 451M, 452M, 453M, 454M, 455M, 456M, 457M, 458M, 459M, 460M, 461M, 462M, 463M, 464M, 465M, 466M, 467M, 468M, 469M, 470M, 471M, 472M, 473M, 474M, 475M, 476M, 477M, 478M, 479M, 480M, 481M, 482M, 483M, 484M, 485M, 486M, 487M, 488M, 489M, 490M, 491M, 492M, 493M, 494M, 495M, 496M, 497M, 498M, 499M, 500M, 501M, 502M, 503M, 504M, 505M, 506M, 507M, 508M, 509M, 510M, 511M, 512M, 513M, 514M, 515M, 516M, 517M, 518M, 519M, 520M, 521M, 522M, 523M, 524M, 525M, 526M, 527M, 528M, 529M, 530M, 531M, 532M, 533M, 534M, 535M, 536M, 537M, 538M, 539M, 540M, 541M, 542M, 543M, 544M, 545M, 546M, 547M, 548M, 549M, 550M, 551M, 552M, 553M, 554M, 555M, 556M, 557M, 558M, 559M, 560M, 561M, 562M, 563M, 564M, 565M, 566M, 567M, 568M, 569M, 570M, 571M, 572M, 573M, 574M, 575M, 576M, 577M, 578M, 579M, 580M, 581M, 582M, 583M, 584M, 585M, 586M, 587M, 588M, 589M, 590M, 591M, 592M, 593M, 594M, 595M, 596M, 597M, 598M, 599M, 600M, 601M, 602M, 603M, 604M, 605M, 606M, 607M, 608M, 609M, 610M, 611M, 612M, 613M, 614M, 615M, 616M, 617M, 618M, 619M, 620M, 621M, 622M, 623M, 624M, 625M, 626M, 627M, 628M, 629M, 630M, 631M, 632M, 633M, 634M, 635M, 636M, 637M, 638M, 639M, 640M, 641M, 642M, 643M, 644M, 645M, 646M, 647M, 648M, 649M, 650M, 651M, 652M, 653M, 654M, 655M, 656M, 657M, 658M, 659M, 660M, 661M, 662M, 663M, 664M, 665M, 666M, 667M, 668M, 669M, 670M, 671M, 672M, 673M, 674M, 675M, 676M, 677M, 678M, 679M, 680M, 681M, 682M, 683M, 684M, 685M, 686M, 687M, 688M, 689M, 690M, 691M, 692M, 693M, 694M, 695M, 696M, 697M, 698M, 699M, 700M, 701M, 702M, 703M, 704M, 705M, 706M, 707M, 708M, 709M, 710M, 711M, 712M, 713M, 714M, 715M, 716M, 717M, 718M, 719M, 720M, 721M, 722M, 723M, 724M, 725M, 726M, 727M, 728M, 729M, 730M, 731M, 732M, 733M, 734M, 735M, 736M, 737M, 738M, 739M, 740M, 741M, 742M, 743M, 744M, 745M, 746M, 747M, 748M, 749M, 750M, 751M, 752M, 753M, 754M, 755M, 756M, 757M, 758M, 759M, 760M, 761M, 762M, 763M, 764M, 765M, 766M, 767M, 768M, 769M, 770M, 771M, 772M, 773M, 774M, 775M, 776M, 777M, 778M, 779M, 780M, 781M, 782M, 783M, 784M, 785M, 786M, 787M, 788M, 789M, 790M, 791M, 792M, 793M, 794M, 795M, 796M, 797M, 798M, 799M, 800M, 801M, 802M, 803M, 804M, 805M, 806M, 807M, 808M, 809M, 810M, 811M, 812M, 813M, 814M, 815M, 816M, 817M, 818M, 819M, 820M, 821M, 822M, 823M, 824M, 825M, 826M, 827M, 828M, 829M, 830M, 831M, 832M, 833M, 834M, 835M, 836M, 837M, 838M, 839M, 840M, 841M, 842M, 843M, 844M, 845M, 846M, 847M, 848M, 849M, 850M, 851M, 852M, 853M, 854M, 855M, 856M, 857M, 858M, 859M, 860M, 861M, 862M, 863M, 864M, 865M, 866M, 867M, 868M, 869M, 870M, 871M, 872M, 873M, 874M, 875M, 876M, 877M, 878M, 879M, 880M, 881M, 882M, 883M, 884M, 885M, 886M, 887M, 888M, 889M, 890M, 891M, 892M, 893M, 894M, 895M, 896M, 897M, 898M, 899M, 900M, 901M, 902M, 903M, 904M, 905M, 906M, 907M, 908M, 909M, 910M, 911M, 912M, 913M, 914M, 915M, 916M, 917M, 918M, 919M, 920M, 921M, 922M, 923M, 924M, 925M, 926M, 927M, 928M, 929M, 930M, 931M, 932M, 933M, 934M, 935M, 936M, 937M, 938M, 939M, 940M, 941M, 942M, 943M, 944M, 945M, 946M, 947M, 948M, 949M, 950M, 951M, 952M, 953M, 954M, 955M, 956M, 957M, 958M, 959M, 960M, 961M, 962M, 963M, 964M, 965M, 966M, 967M, 968M, 969M, 970M, 971M, 972M, 973M, 974M, 975M, 976M, 977M, 978M, 979M, 980M, 981M, 982M, 983M, 984M, 985M, 986M, 987M, 988M, 989M, 990M, 991M, 992M, 993M, 994M, 995M, 996M, 997M, 998M, 999M, 1000M, 1001M, 1002M, 1003M, 1004M, 1005M, 1006M, 1007M, 1008M, 1009M, 1010M, 1011M, 1012M, 1013M, 1014M, 1015M, 1016M, 1017M, 1018M, 1019M, 1020M, 1021M, 1022M, 1023M, 1024M, 1025M, 1026M, 1027M, 1028M, 1029M, 1030M, 1031M, 1032M, 1033M, 1034M, 1035M, 1036M, 1037M, 1038M, 1039M, 1040M, 1041M, 1042M, 1043M, 1044M, 1045M, 1046M, 1047M, 1048M, 1049M, 1050M, 1051M, 1052M, 1053M, 1054M, 1055M, 1056M, 1057M, 1058M, 1059M, 1060M, 1061M, 1062M, 1063M, 1064M, 1065M, 1066M, 1067M, 1068M, 1069M, 1070M, 1071M, 1072M, 1073M, 1074M, 1075M, 1076M, 1077M, 1078M, 1079M, 1080M, 1081M, 1082M, 1083M, 1084M, 1085M, 1086M, 1087M, 1088M, 1089M, 1090M, 1091M, 1092M, 1093M, 1094M, 1095M, 1096M, 1097M, 1098M, 1099M, 1100M, 1101M, 1102M, 1103M, 1104M, 1105M, 1106M, 1107M, 1108M, 1109M, 1110M, 1111M, 1112M, 1113M, 1114M, 1115M, 1116M, 1117M, 1118M, 1119M, 1120M, 1121M, 1122M, 1123M, 1124M, 1125M, 1126M, 1127M, 1128M, 1129M, 1130M, 1131M, 1132M, 1133M, 1134M, 1135M, 1136M, 1137M, 1138M, 1139M, 1140M, 1141M, 1142M, 1143M, 1144M, 1145M, 1146M, 1147M, 1148M, 1149M, 1150M, 1151M, 1152M, 1153M, 1154M, 1155M, 1156M, 1157M, 1158M, 1159M, 1160M, 1161M, 1162M, 1163M, 1164M, 1165M, 1166M, 1167M, 1168M, 1169M, 1170M, 1171M, 1172M, 1173M, 1174M, 1175M, 1176M, 1177M, 1178M, 1179M, 1180M, 1181M, 1182M, 1183M, 1184M, 1185M, 1186M, 1187M, 1188M, 1189M, 1190M, 1191M, 1192M, 1193M, 1194M, 1195M, 1196M, 1197M, 1198M, 1199M, 1200M, 1201M, 1202M, 1203M, 1204M, 1205M, 1206M, 1207M, 1208M, 1209M, 1210M, 1211M, 1212M, 1213M, 1214M, 1215M, 1216M, 1217M, 1218M, 1219M, 1220M, 1221M, 1222M, 1223M, 1224M, 1225M, 1226M, 1227M, 1228M, 1229M, 1230M, 1231M, 1232M, 1233M, 1234M, 1235M, 1236M, 1237M, 1238M, 1239M, 1240M, 1241M, 1242M, 1243M, 1244M, 1245M, 1246M, 1247M, 1248M, 1249M, 1250M, 1251M, 1252M, 1253M, 1254M, 1255M, 1256M, 1257M, 1258M, 1259M, 1260M, 1261M, 1262M, 1263M, 1264M, 1265M, 1266M, 1267M, 1268M, 1269M, 1270M, 1271M, 1272M, 1273M, 1274M, 1275M, 1276M, 1277M, 1278M, 1279M, 1280M, 1281M, 1282M, 1283M, 1284M, 1285M, 1286M, 1287M, 1288M, 1289M, 1290M, 1291M, 1292M, 1293M, 1294M, 1295M, 1296M, 1297M, 1298M, 1299M, 1300M, 1301M, 1302M, 1303M, 1304M, 1305M, 1306M, 1307M, 1308M, 1309M, 1310M, 1311M, 1312M, 1313M, 1314M, 1315M, 1316M, 1317M, 1318M, 1319M, 1320M, 1321M, 1322M, 1323M, 1324M, 1325M, 1326M, 1327M, 1328M, 1329M, 1330M, 1331M, 1332M, 1333M, 1334M, 1335M, 1336M, 1337M, 1338M, 1339M, 1340M, 1341M, 1342M, 1343M, 1344M, 1345M, 1346M, 1347M, 1348M, 1349M, 1350M, 1351M, 1352M, 1353M, 1354M, 1355M, 1356M, 1357M, 1358M, 1359M, 1360M, 1361M, 1362M, 1363M, 1364M, 1365M, 1366M, 1367M, 1368M, 1369M, 1370M, 1371M, 1372M, 1373M, 1374M, 1375M, 1376M, 1377M, 1378M, 1379M, 1380M, 1381M, 1382M, 1383M, 1384M, 1385M, 1386M, 1387M, 1388M, 1389M, 1390M, 1391M, 1392M, 1393M, 1394M, 1395M, 1396M, 1397M, 1398M, 1399M, 1400M, 1401M, 1402M, 1403M, 1404M, 1405M, 1406M, 1407M, 1408M, 1409M, 1410M, 1411M, 1412M, 1413M, 1414M, 1415M, 1416M, 1417M, 1418M, 1419M, 1420M, 1421M, 1422M, 1423M, 1424M, 1425M, 1426M, 1427M, 1428M, 1429M, 1430M, 1431M, 1432M, 1433M, 1434M, 1435M, 1436M, 1437M, 1438M, 1439M, 1440M, 1441M, 1442M, 1443M, 1444M, 1445M, 1446M, 1447M, 1448M, 1449M, 1450M, 1451M, 1452M, 1453M, 1454M, 1455M, 1456M, 1457M, 1458M, 1459M, 1460M, 1461M, 1462M, 1463M, 1464M, 1465M, 1466M, 1467M, 1468M, 1469M, 1470M, 1471M, 1472M, 1473M, 1474M, 1475M, 1476M, 1477M, 1478M, 1479M, 1480M, 1481M, 1482M, 1483M, 1484M, 1485M, 1486M, 1487M, 1488M, 1489M, 1490M, 1491M, 1492M, 1493M, 1494M, 1495M, 1496M, 1497M, 1498M, 1499M, 1500M, 1501M, 1502M, 1503M, 1504M, 1505M, 1506M, 1507M, 1508M, 1509M, 1510M, 1511M, 1512M, 1513M, 1514M, 1515M, 1516M, 1517M, 1518M, 1519M, 1520M, 1521M, 1522M, 1523M, 1524M, 1525M, 1526M, 1527M, 1528M, 1529M, 1530M, 1531M, 1532M, 1533M, 1534M, 1535M, 1536M, 1537M, 1538M, 1539M, 1540M, 1541M, 1542M, 1543M, 1544M, 1545M, 1546M, 1547M, 1548M, 1549M, 1550M, 1551M, 1552M, 1553M, 1554M, 1555M, 1556M, 1557M, 1558M, 1559M, 1560M, 1561M, 1562M, 1563M, 1564M, 1565M, 1566M, 1567M, 1568M, 1569M, 1570M, 1571M, 1572M, 1573M, 1574M, 1575M, 1576M, 1577M, 1578M, 1579M, 1580M, 1581M, 1582M, 1583M, 1584M, 1585M, 1586M, 1587M, 1588M, 1589M, 1590M, 1591M, 1592M, 1593M, 1594M, 1595M, 1596M, 1597M, 1598M, 1599M, 1600M, 1601M, 1602M, 1603M, 1604M, 1605M, 1606M, 1607M, 1608M, 1609M, 1610M, 1611M, 1612M, 1613M, 1614M, 1615M, 1616M, 1617M, 1618M, 1619M, 1620M, 1621M, 1622M, 1623M, 1624M, 1625M, 1626M, 1627M, 1628M, 1629M, 1630M, 1631M, 1632M, 1633M, 1634M, 1635M, 1636M, 1637M, 1638M, 1639M, 1640M, 1641M, 1642M, 1643M, 1644M, 1645M, 1646M, 1647M, 1648M, 1649M, 1650M, 1651M, 1652M, 1653M, 1654M, 1655M, 1656M, 1657M, 1658M, 1659M, 1660M, 1661M, 1662M, 1663M, 1664M, 1665M, 1666M, 1667M, 1668M, 1669M, 1670M, 1671M, 1672M, 1673M, 1674M, 1675M, 1676M, 1677M, 1678M, 1679M, 1680M, 1681M, 1682M, 1683M, 1684M, 1685M, 1686M, 1687M, 1688M, 1689M, 1690M, 1691M, 1692M, 1693M, 1694M, 1695M, 1696M, 1697M, 1698M, 1699M, 1700M, 1701M, 1702M, 1703M, 1704M, 1705M, 1706M, 1707M, 1708M, 1709M, 1710M, 1711M, 1712M, 1713M, 1714M, 1715M, 1716M, 1717M, 1718M, 1719M, 1720M, 1721M, 1722M, 1723M, 1724M, 1725M, 1726M, 1727M, 1728M, 1729M, 1730M, 1731M, 1732M, 1733M, 1734M, 1735M, 1736M, 1737M, 1738M, 1739M, 1740M, 1741M, 1742M, 1743M, 1744M, 1745M, 1746M, 1747M, 1748M, 1749M, 1750M, 1751M, 1752M, 1753M, 1754M, 1755M, 1756M, 1757M, 1758M, 1759M, 1760M, 1761M, 1762M, 1763M, 1764M, 1765M, 1766M, 1767M, 1768M, 1769M, 1770M, 1771M, 1772M, 1773M, 1774M, 1775M, 1776M, 1777M, 1778M, 1779M, 1780M, 1781M, 1782M, 1783M, 1784M, 1785M, 1786M, 1787M, 1788M, 1789M, 1790M, 1791M, 1792M, 1793M, 1794M, 1795M, 1796M, 1797M, 1798M, 1799M, 1800M, 1801M, 1802M, 1803M, 1804M, 1805M, 1806M, 1807M, 1808M, 1809M, 1810M, 1811M, 1812M, 1813M, 1814M, 1815M, 1816M, 1817M, 1818M, 1819M, 1820M, 1821M, 1822M, 1823M, 1824M, 1825M, 1826M, 1827M, 1828M, 1829M, 1830M, 1831M, 1832M, 1833M, 1834M, 1835M, 1836M, 1837M, 1838M, 1839M, 1840M, 18	



निर्वात के लिए नहीं NOT FOR EXPORT

OPEN SERIES
MAP

No. F42F16

Scale 1:50,000

F42F11 (41M/11)	F42F15 (41M/15)	F43A3 (46A/3)
Kachchh GUJARAT	Surendranagar GUJARAT	
F42F12 (41M/12)	F42F16 (41M/16)	F43A4 (46A/4)
	Amradabad GUJARAT	
F42L9 (41N/9)	F42L13 (41N/13)	F43G1 (46B/1)

1. Patan, GUJARAT
2. Mahesana, GUJARAT

भारतीय सर्वेक्षण विभाग

SURVEY OF INDIA

1st Edition 2009.

Price: Rs. 50/-

CONVENTIONAL SYMBOLS

Express highway with toll, with bridge, with distance stone	
Roads, metalled according to importance	
Roads, unmetalled according to importance	
Unmetalled road, Cart-track, Path-track with pass, Foot-path	
Stream, with track in bed, unmetalled, Canal	
Dam, masonry or rock-filled, earthwork, Wall	
River, dry with water channel, with island & rocks, Tidal river	
Submerged rocks, Shoal, Swamp, Roads	
Wells, lined, unlined, Tube-well, Spring, Fathometer, dry	
Embankment, road or rail, tank, Stone ground	
Railways, broad gauge, double single with station, under construction	
Railways, other gauges, double single with distance stone, do	
Mineral line or railway, Kila, Cutting with tunnel	
Contours with sub-levels, Rocky slopes, Cliffs	
Sand features (sand, Gravel, Shingle, etc.)	
Town or Village, inhabited, deserted, Fort	
Hill, permanent, temporary, Tower, Antenna, etc.	
Temple, Church, Mosque, Ghat, Tomb, Graves	
Lighthouse, Lightship, Buoy, lighted, unlighted, Anchorage	
Mine, View on India, Grass, Soil, etc.	
Power, primary, other, Plant, Control, Station, Overhead, etc.	
Airport, cultivated, wooded, Surveyed line	
Boundary, international	
State, demarcated, undemarcated	
Statute, subdivision, label or label, forest	
Boundary, plain, surveyed, uncoloured	
Height, trigonometrical, station, point, approximate	
Benchmark, geodetic, tertiary, canal, BM 83-3, BM 69-3, etc.	
Post office, Telegraph office, Overhead tank	
Rail house or inspection bungalow, Circuit house, Police station	
Camping ground, Forest, reserved, protected	
Special names, administrative, locally or other	
Hospital, Dispensary, Veterinary Hospital, Dispensary	
Airports, Helipad, Tourist site	
Power line, with pylons, surveyed, with poles, unsurveyed	

NOTES

Heights are in metres and above Indian mean sea level.
Contours are approximate.
A relative height, Δ , represents the approximate height, in metres, between the top and bottom of a steep slope.
The area of Kutch District falling in this sheet is not included in any block.
Contours in the sheet against which there is no descriptive remarks are generally feasible.
Tanks, shown dry in this area usually contain water from July to March.

COMPLETION INDEX

A. Surveyed during 1895-97. Updated for major details during 2008-09.



Projection - UTM Datum - WGS 84

Magnetic Variation from True North about $\frac{1}{2}$ West in 2005.
(Decreases by about 1 annually)

1:50,000

Scale 1:50,000
1 cm to 1 km
1 inch to 1 mile

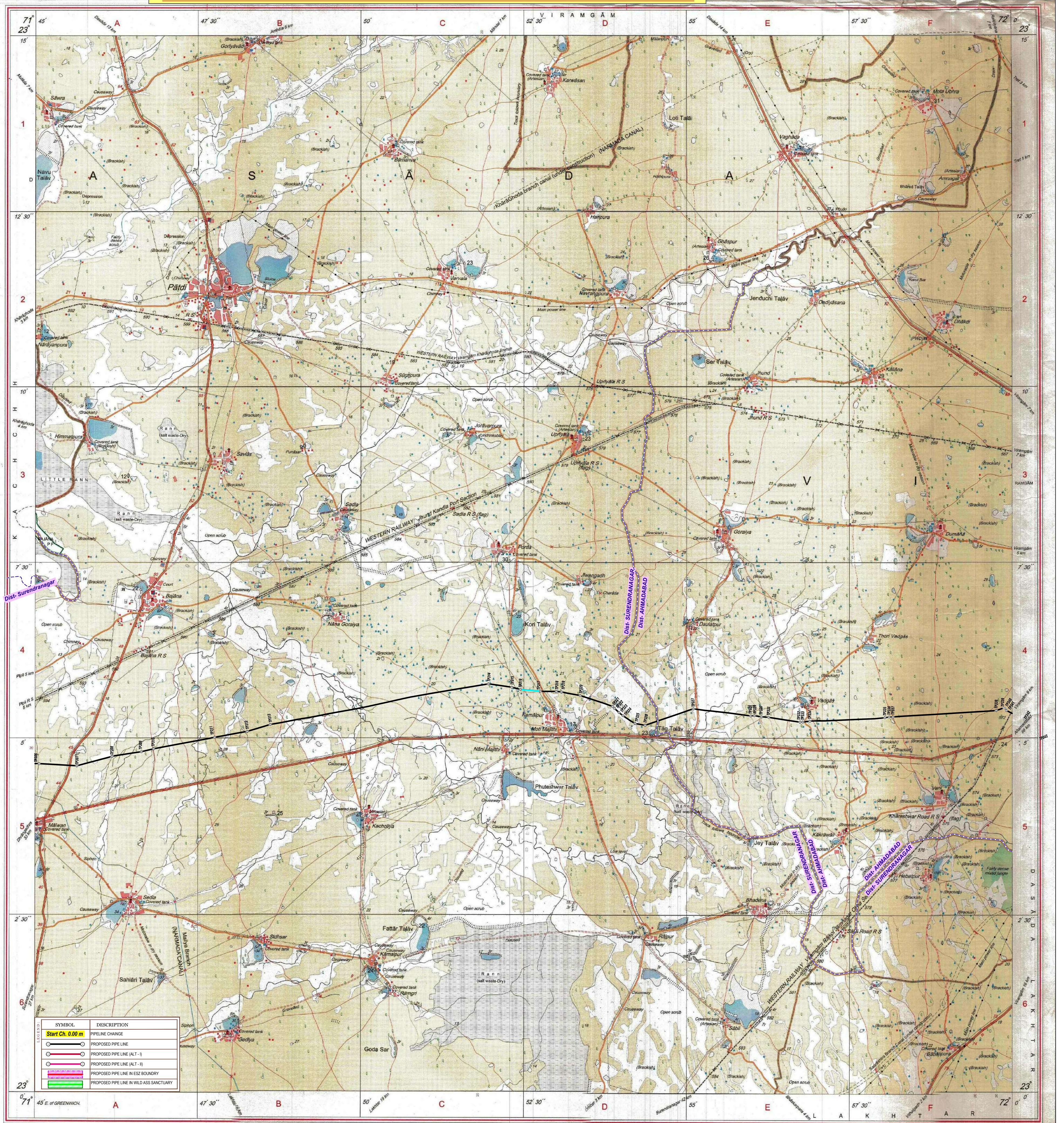
For further details about this map, please contact
Director
Gujarat, Damini & Co. Geo-Spatial Data Centre
Survey of India, Sector-10(A)
Gandhinagar
Fax: 079-2329405/1452

WEBSITE - www.surveyofindia.gov.in

Reproduction in whole or part by any means is prohibited
without the written permission of Survey of India, the
National Mapping Agency.

GOVERNMENT OF INDIA COPYRIGHT, 2009.

MAP SHOWING WILD LIFE SANCTUARY AREA ON PROPOSED KANDLA VIRAMGAM LPG PIPELINE ROUTE - KUTCH DISTRICT



REG. No. 8816-SPG D/09 (G.D.B.D) GDC-155,000-1510.

भारत के सर्वेक्षण के विभाग ने प्रकाशित.
Published under the direction of Surveyor General of India.
Survey of India, Haldimandir Estate, Post Box No. 37, Dehra Dun-244139 (Uttarakhand)
Department of Science & Technology, Government of India.

PRINTED AT THE SOUTHERN PRINTING GROUP OF SURVEY OF INDIA.

