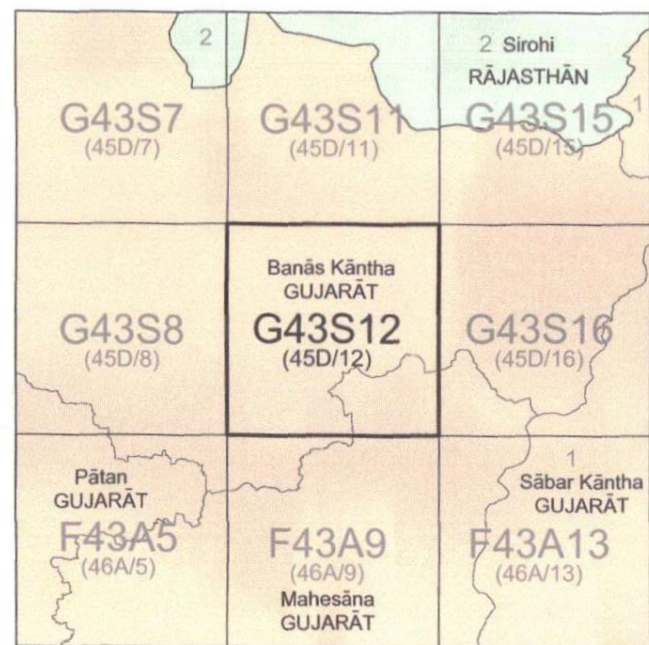


No. G43S12

Scale 1:50,000



भारतीय सर्वेक्षण विभाग SURVEY OF INDIA

1st Edition 2011.

Price : Rs. 70/-

CONVENTIONAL SYMBOLS



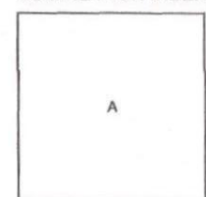
REFERENCE

NOTES

Heights are in metres and above Indian mean sea level.
Contours are approximate.
A relative height, e.g., 100, represents the approximate height, in metres, between the top and bottom of a steep slope.
The triangulated heights and contours in this sheet have not been adjusted to the heights of the spirit-levelled bench marks and not be strictly in accordance with them, but the discrepancy is unlikely to exceed 2 metres.
Tanks, shown dry, in this area usually contain water from July to October.
A relative height, e.g., 100, against a well, in blue, indicates its total depth in metres in sand areas, cultivation is periodic and dependent on rainfall.

COMPILED INDEX

A Surveyed during 1959-60. Updated for major details during 2005-06.



Projection - UTM Datum - WGS 84

Magnetic Variation from True North about 0° in 2005.
(Increasing by about 1° East annually).



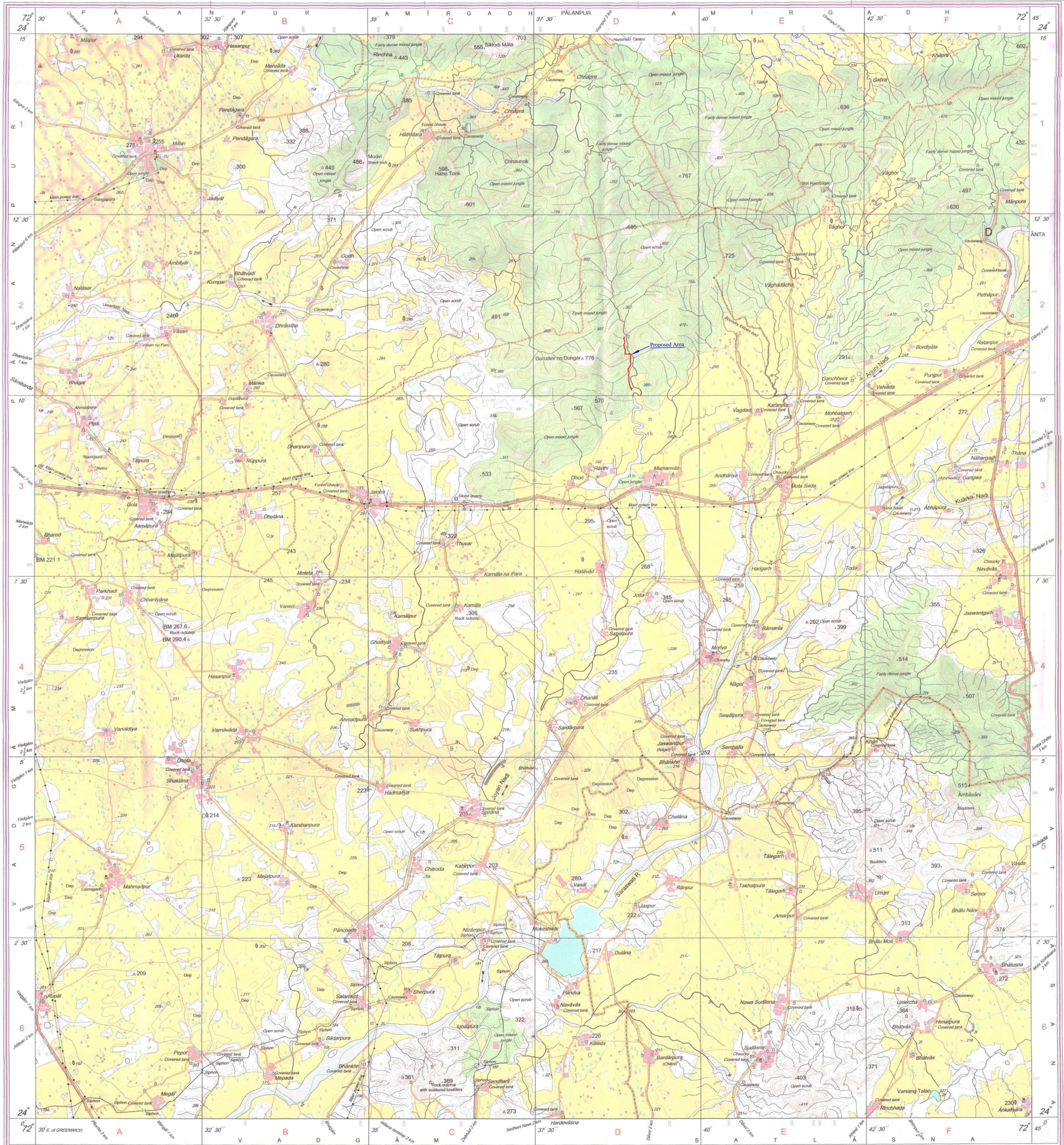
CONTOUR INTERVAL 20 METRES

For further details about this map, please contact
Director
Gujarat, Damani & Diu Geo-Spatial Data Centre
Survey of India, Sector 10(A)
Gandhinagar.

WEBSITE - www.surveyofindia.gov.in

Reproduction in whole or part by any means is prohibited
without the written permission of Survey of India, the
National Mapping Agency.

GOVERNMENT OF INDIA COPYRIGHT, 2011.



REG. NO. - SPG D11 (GD&D GDC-1:50,000).

भारत के सर्वेक्षक, स्वर्ण सुभा राव, बी.ई., के निदेशन में प्रकाशित,
Published under the direction of Swarna Subba Rao, B.E., Surveyor General of India,
Survey of India, Hatibarkala Estate, Post Box No.37, Dehra Dun-248001 (Uttarakhand)
Department of Science & Technology, Government of India.

PRINTED AT THE SOUTHERN PRINTING GROUP OF SURVEY OF INDIA.