

निर्वात के लिए नहीं

NOT FOR EXPORT

OPEN SERIES

MAP

No. F43M2

Scale 1:50,000

F42R13 (41O/13)	F43M1 (46C/1)	F43M5 (46C/5)
F42R14 (41O/14)	F43M2 (46C/2) Bhāvnagar GUJARAT	F43M6 (46C/6)
F42R15 (41O/15)	F43M3 (46C/3)	F43M7 (46C/7) GULF KHAMBHAT

1. Bharūch, GUJARAT.

2. Ahmadābād, GUJARAT.

भारतीय सर्वेक्षण विभाग

SURVEY OF INDIA

1st Edition 2011.

Price : Rs. 70/-

CONVENTIONAL SYMBOLS

Express highway: with toll; with bridge; with distance stone

Roads, metalled: according to importance

Roads, double cartriageway: according to importance

Unmetalled road: Cart-track: Pack-track with pass: Foot-path

Streams: with track in bed: undefined: Canal

Dam: masonry or rock-filled: earthenwork: Well

River: dry with water channel; with island & rocks: Tidal river

Submerged rocks: Shoal: Swamp: Reeds

Wells: lined: unlined: Tube-well: Spring: Tank: perennial: dry

Embankments: road or rail: tank: Broken ground

Railways: broad gauge: double: single with station: under constr.

Railways, other gauges: double: single with distance stone: do

Mineral line or tramway: Kila: Cutting with tunnel

Contours with sub-features: Rocky slopes: Cliffs

Sand features (1)flat: (2)sand-hill(permanent): (3)dunes(shifting)

Towns or Villages: inhabited: deserted: Fort

Huts: permanent: temporary: Tower: Antiquities

Temple: Chhat: Church: Mosque: Igāh: Tomb: Graves

Lighthouse: Lightship: Buoy: lighted: unlighted: Anchorage

Mine: Vite on hill: Great Stride

Palms: palmyra: other: Plantain: Conifer: Bamboo: Other trees

Areas: cultivated: wooded: Surveyed tree

Boundary: international

state: demarcated: undemarcated

district: subdivision: tahsil or taluk: forest

Boundary pillars: surveyed: unlocated

Height: triangulated: station: point: approximate

Bench-mark: geodetic: tertiary: canal

Post office: Overhead tank

Rest house or inspection bungalow: Circuit house: Police station

Camping ground: Forest: reserved: protected

Spaced names: administrative: locality or tribal

Hospital: Dispensary: Veterinary Hospital / Dispensary

Aerodrome: Helipad: Tourist site

Power line: with pylons surveyed; with poles unsurveyed

REFERENCE

NH RE National Highway No. BE

NOTES

Heights and contours have not been shown.

A relative height, e.g. 40, represents the approximate height, in metres, between the top and bottom of a steep slope.

Cultivation is periodic and dependent on rainfall.

Tanks, shown dry in this area usually contain water from July to December.

COMPILATION INDEX

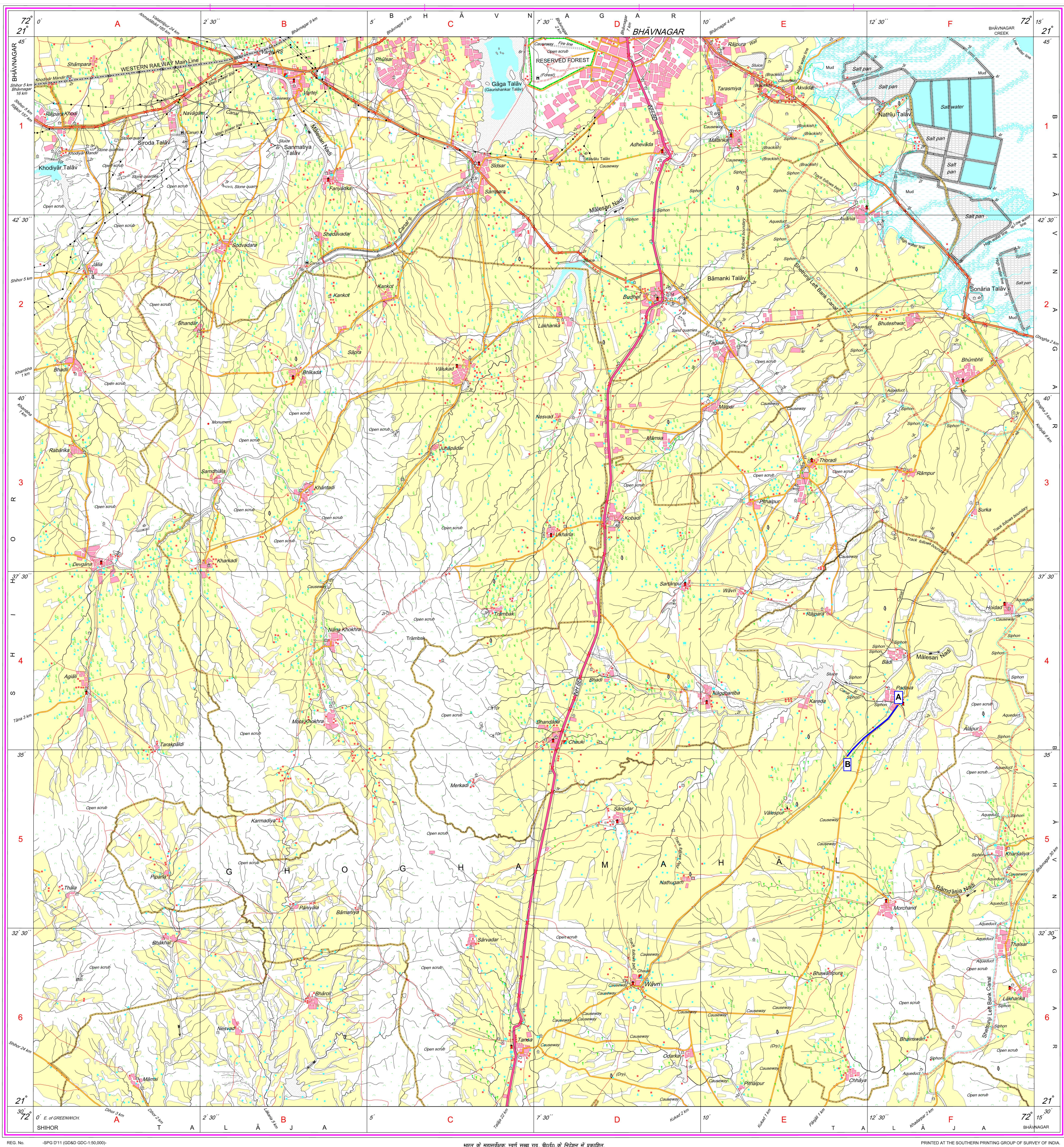
A. Surveyed during 1956-67. Updated for major details during 2006-07.

Projection - UTM Datum - WGS 84

Magnetic Variation from True North about 1/2° West in 2005.  
(Decreasing by about 1" annually).

500 m to 1 cm  
1:50,000  
2 cm to 1 km  
3 Kilometres

For further details about this map, please contact  
Director  
Gujarat, Damān & Diu Geo-Spatial Data Centre  
Survey of India, Sector 10-A  
Gāndhinagar



WEBSITE - [www.surveyofindia.gov.in](http://www.surveyofindia.gov.in)

Reproduction in whole or part by any means is prohibited without the written permission of Survey of India, the National Mapping Agency.

भारत के नक्शेकार: सर्वेक्षण विभाग, भारत के सर्वेक्षण में शामिल,  
Published under the direction of Swami Subba Rao, B.E., Surveyor General of India,  
Survey of India, Hāmīrāka Estate, Post Box No. 37, Dehra Dūn-248001 (Uttarakhand)  
Department of Science & Technology, Government of India.

PRINTED AT THE SOUTHERN PRINTING GROUP OF SURVEY OF INDIA.