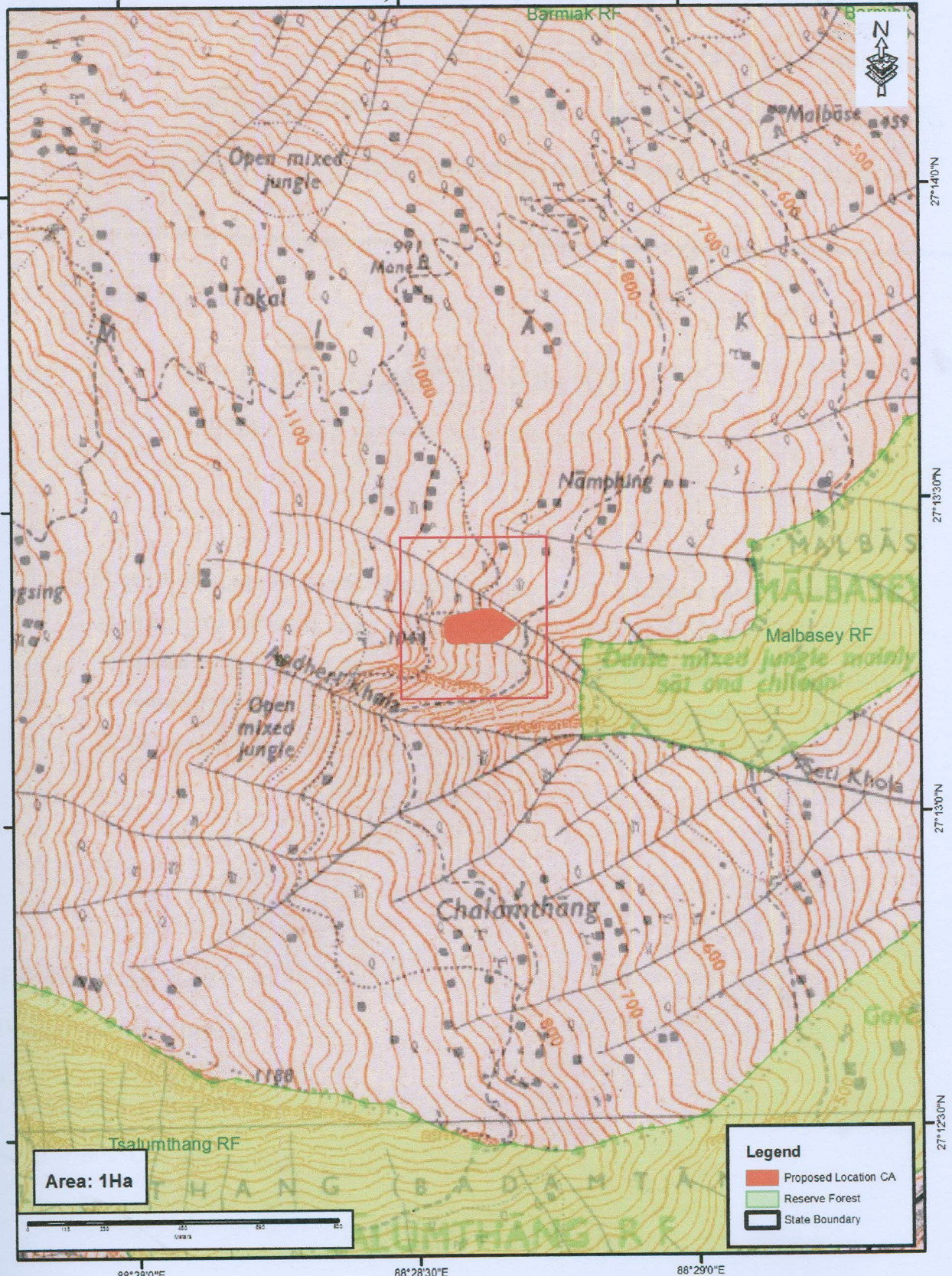


# Compensatory Afforestation Against the Diversion of Forest Land for Development of Wayside Amenity with Parking facilities and walkways upto Viewpoint at 11th mile, Bermoik in South Sikkim,



Source: RS/GIS Cell Working Plan, FEWMD  
Vide SLNo : 156/GIS/WP17/FEWMD

Divisional Forest Officer  
South Territorial Division  
Forest, Env. & W/L Management Deptt.  
Government of Sikkim

Assistant Conservator of Forest  
Territorial sub Division  
FEWMD, Namchi