

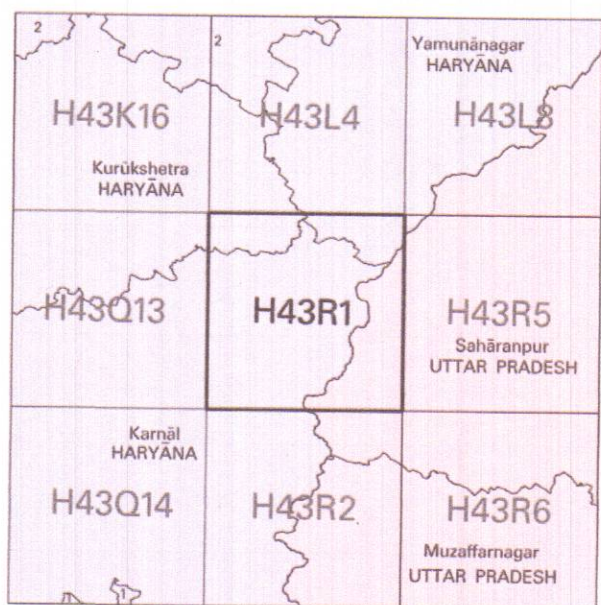


निर्यात के लिए नहीं NOT FOR EXPORT

OPEN SERIES  
MAP

No. H43R1

Scale 1:50,000



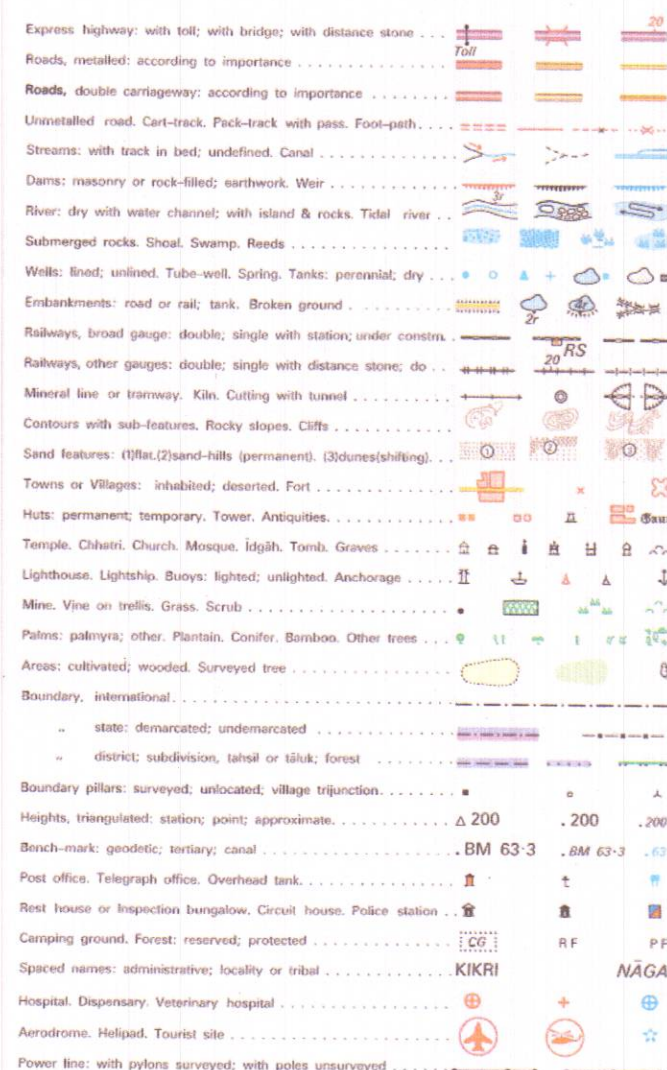
भारतीय सर्वेक्षण विभाग

SURVEY OF INDIA

1st Edition 2007.

Price : Rs. 50/-

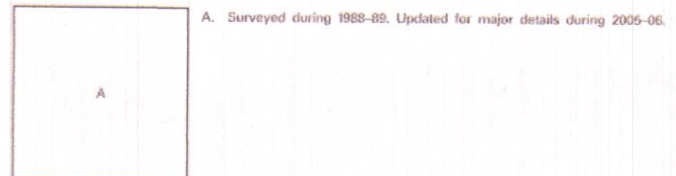
CONVENTIONAL SYMBOLS



NOTES :-

Heights are in metres and above Indian mean sea level.  
Contours are approximate.  
A relative height, e.g. 30, represents the approximate height in metres, between the top and bottom of a steep slope.  
Towns shown dry, in this area usually contain water from July to December.  
Towns are numerous throughout the sheet, only the important ones have been shown.  
Unsettled roads and cart-tracks in this sheet are generally motorable in dry season. Permission to use those along canals is required from the Irrigation authorities.  
The area adjoining the Yamuna River is liable to change owing to continual fluctuation in the course of the river.  
3,000-acre reclamation scheme of Bhakra Dam Project Surveys are shown as tertiary bench-marks.

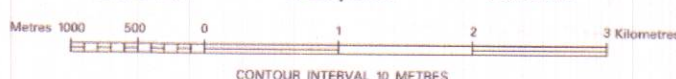
COMPILATION INDEX



Projection - UTM Datum - WGS 84

Magnetic Variation from True North about 3/4 East in 2005.  
(Increasing by about 1' annually).

1:50,000



CONTOUR INTERVAL 10 METRES

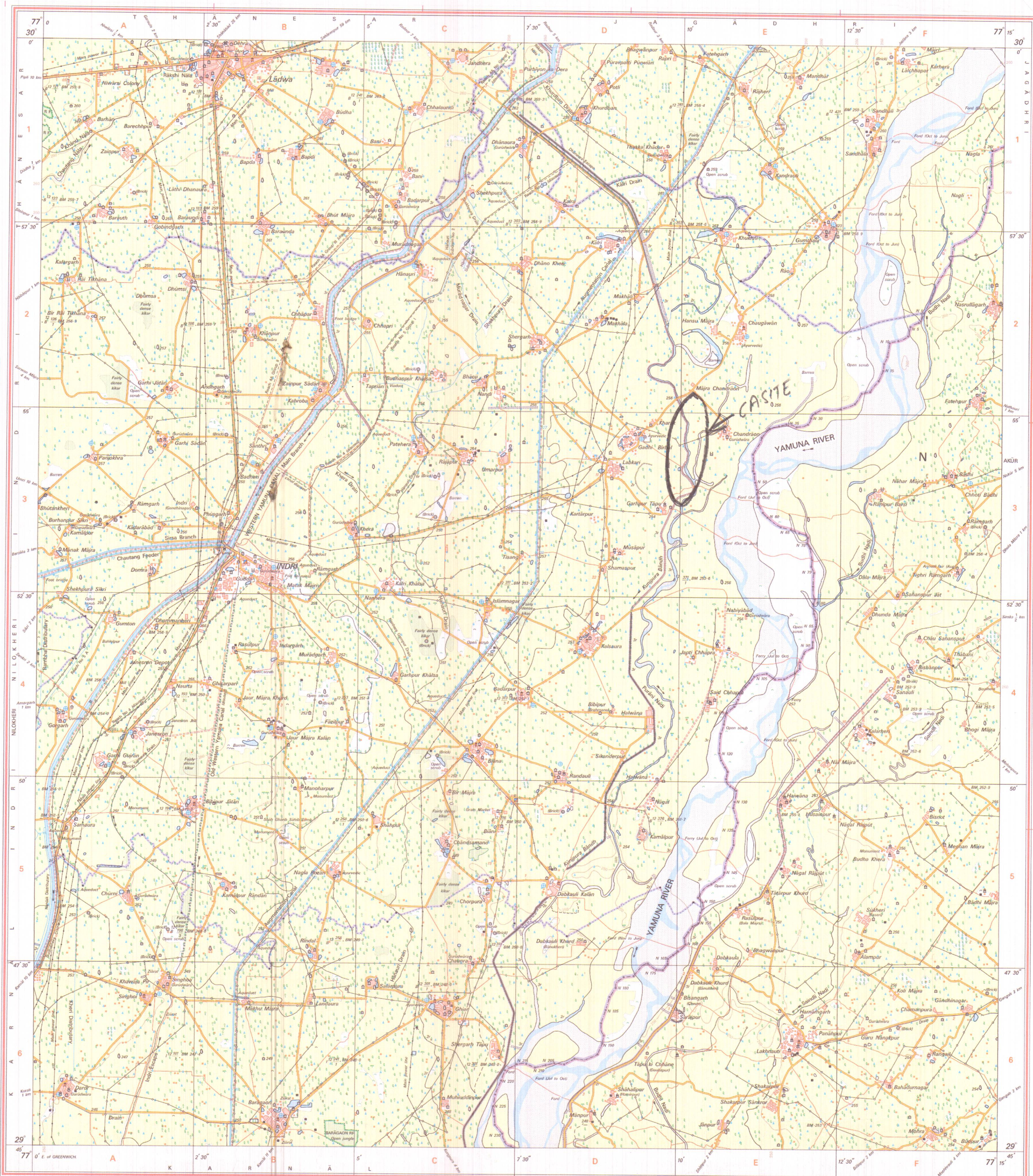
For further details about the map, please contact

Director  
Haryana Geo-Spatial Data Centre  
Survey of India, Sector 32 A  
Chandigarh.  
Fax : 0172 - 2604671

WEBSITE - www.surveyofindia.gov.in

Reproduction in whole or part by any means is prohibited  
without the written permission of Survey of India, the  
National Mapping Agency.

GOVERNMENT OF INDIA COPYRIGHT, 2007.



REG. No. - WPG D-07 (Haryana) GDC-155/2000

यह नक्शा सर्वेक्षण विभाग द्वारा तैयार किया गया है, जो कि (सर्वेक्षण विभाग), सर्वेक्षण विभाग, सर्वेक्षण विभाग, के नियंत्रण में प्रचलित है।  
Published under the direction of Major General M. Gopal Rao, B.Tech., P.G.Dip. (Aerial Photo), M.M.E., M.C.A., F.R.S., Surveyor General of India,  
Survey of India, Hathi Bunka Estate, Post Box No. 37, Dehra Dun - 248001 (Uttarakhand)  
Department of Science & Technology, Government of India.

PRINTED AT THE WESTERN PRINTING GROUP OF SURVEY OF INDIA.

Divisional Forest Officer  
Karnal Forest Division  
KARNAL