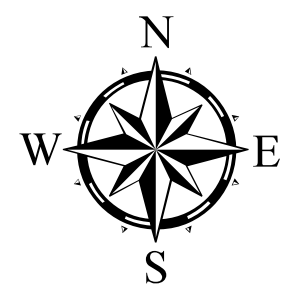
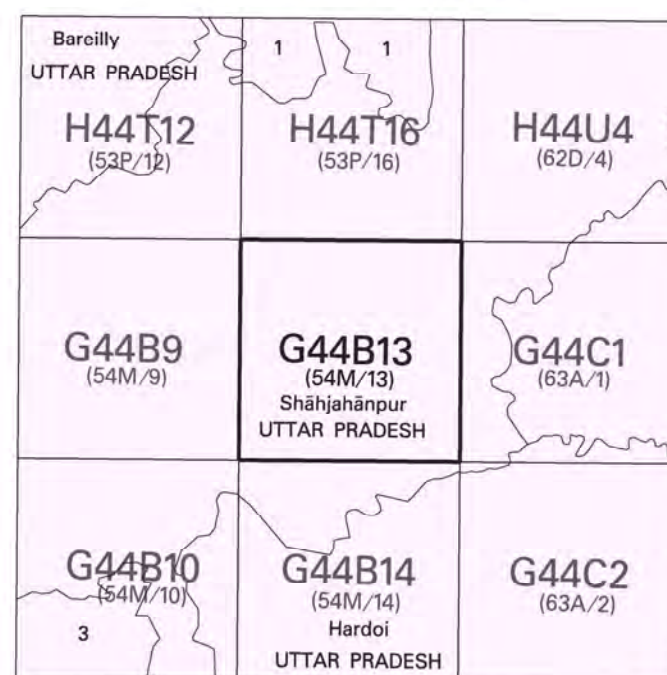


Toposheet Map showing Improvement and Up-gradation of Existing Road (NH-731) to 4-Lane with Paved Shoulder from Km 88.750 to Km 123.650, Start of Shahjahanpur Bypass to Start of Shahabad Bypass of NH-731 on HAM basis of Shahjahanpur and Hardoi Forest Division, Shahjahanpur and Hardoi District in the state of Uttar Pradesh (Total Length-34.900 Km of Package 2A)



No. G44B13

Scale 1:50,000



1 Pilibhit, UTTAR PRADESH.
2 Khari, UTTAR PRADESH.
3 Farrukhabad, UTTAR PRADESH.

भारतीय सर्वेक्षण विभाग

SURVEY OF INDIA

1st Edition 2011.

Price: ₹70/-

CONVENTIONAL SYMBOLS

- Express highway: with toll; with bridge; with distance stone
Road metalled: according to importance
Roads double carriageway: according to importance
Unmetalled road: Cart-track: Pack-track with path: Foot-path
Streams: with track in bed; unfilled; Canal
Dams: masonry or rock-filled; earthwork; Weir
River: dry; with water channel; with island & rocks; Tidal river
Submerged rocks: Shoal, Swamp, Reeds
Wells: lined; unlined; Tube-well; Spring; Tanks: perennial; dry
Embankments: road or rail; tanks; Broken ground
Railways: broad gauge: double; single with station; under constr
Railways, other gauge: double; single with distance stone; do
Mineral line or tramway: Kite; Cutting with tunnel
Contours with sub-features: Rocky slopes, Cliffs
Sand features: [Flat] (Sand-hills (permanent), (Discontinuous))
Towns or Villages: inhabited; deserted; Fort
Huts: permanent; temporary; Tower; Antiquities
Temple, Chhatra, Church, Mosque, Igah, Tomb, Grave
Lighthouse, Lightship, Buoy: lighted; unlighted Anchorage
Mine, Vine on trellis, Grass, Scrub
Palms: palmyra; other: Plantain, Conifer, Bamboo, Other trees
Areas: cultivated; wooded; Surveyed tree
Boundary, International
state: demarcated; undemarcated
district; subdivision, tahsil or taluk; forest
Boundary, Pillar: surveyed; uncoloured
Heights, triangulated: station; point; approximate
Bench-mark: geodetic; tertiary; canal
Post office, Telegraph office, Overhead tank
Rest house or inspection bungalow, Circuit house, Police station
Camping ground, Forest: reserved; protected
Speed names: administrative; locality or tribal
Hospital, Dispensary, Veterinary Hospital / Dispensary
Aerodrome, Helipad, Tourist site
Power line: with pylons surveyed; with poles unsurveyed

Legend

- Proposed Centre Line
NH 24
Non Forest Land
Balance Forest Area
Proposed Division of Forest Land
Existing Road Formation

REFERENCES

NH 24 National Highway No. 24, SH 29 State Highway No. 29,
SH 25 State Highway No. 25.

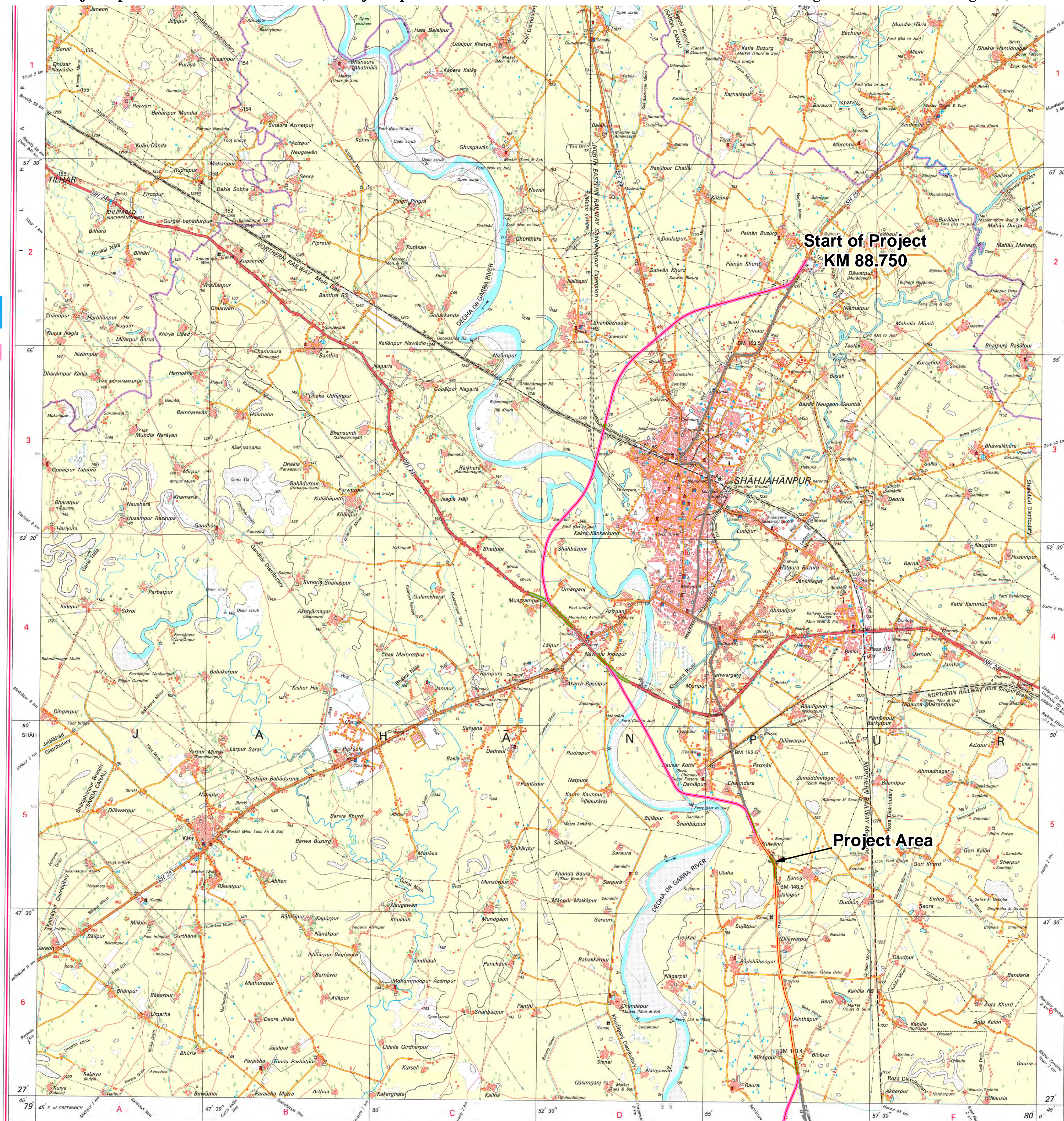
NOTES :-

Heights are in metres and above Indian mean sea level.
Contours are approximate.
A relative height, Δh , represents the approximate height, in metres, between the top and bottom of a steep slope.
The kilometre stone numbers along roads, railways and Shahjahanpur Branch (SARDA CANAL) are shown in slant type, e.g., '5' whereas kilometre numbers are shown in upright type, e.g., '5'.
Wells and tube-wells are numerous throughout the sheet; only the important ones have been shown.
Tanks, shown dry, in this area, usually contain water from July to December.

COMPILATION INDEX

A Surveyed 1993-94, Rapid verification in 2002-03 on 1:25,000 scale.
Updated for major details (by palm top survey) during 2006-07.
Projection - UTM Datum - WGS 84
Magnetic Variation from True North about $\frac{1}{2}^{\circ}$ East in 2005.
(Increasing by about $\frac{1}{2}^{\circ}$ annually).
1:50,000
500 m to 1 cm
Metres 000 500 0 1 2 3 Kilometres
CONTOUR INTERVAL 10 METRES
For further details about this map, please contact
Additional Surveyor General
Uttarakhand and West Uttar Pradesh Geo-Spatial Data Centre
Survey of India, 17 E.C. Road
Dehra Dun.
Fax : 0135 - 2656402
WEBSITE - www.surveyofindia.gov.in

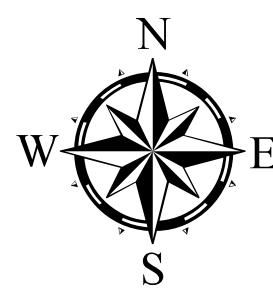
Reproduction in whole or part by any means is prohibited
without the written permission of Survey of India, the
National Mapping Agency.



Start of Project
KM 88.750

Project Area

Toposheet Map showing Improvement and Up-gradation of Existing Road (NH-731) to 4-Lane with Paved Shoulder from Km 88.750 to Km 123.650, Start of Shahjahanpur Bypass to Start of Shahabad Bypass of NH-731 on HAM basis of Shahjahanpur and Hardoi Forest Division, Shahjahanpur and Hardoi District in the state of Uttar Pradesh (Total Length-34.900 Km of Package 2A)



No. G44B14

Scale 1:50,000

G44B9 (54M/9)	Shahjahanpur UTTAR PRADESH G44B13 (54M/13)	Kheri UTTAR PRADESH G44C1 (53A/1)
G44B10 (54M/10)	G44B14 (54M/14) Hardoi UTTAR PRADESH	G44C2 (53A/2)
Famulabad UTTAR PRADESH G44B11 (54M/11)	G44B15 (54M/15)	G44C3 (53A/3)

1 Budaun, UTTAR PRADESH.

भारतीय सर्वेक्षण विभाग

SURVEY OF INDIA

1st Edition 2009.

Price : Rs. 50/-

CONVENTIONAL SYMBOLS

Express highway with bot. with bridge, with distance stone	
Roads, metallic according to importance	
Roads, double carriageway according to importance	
Unimproved road: Cart track, Pack track with pass, Foot path	
Stream, with track in bed, underflow, Canal	
Dam, masonry or rock-filled, earthen, Water	
River, dry with water channel, with island & rock, Tide river	
Submerged rock, Shoal, Shallow, Rocks	
Wells, lined, unlined, Tube well, Spring, Tanks, perennial, dry	
Entertainment, road or rail, bank, Broken ground	
Railways, broad gauge, double, single with electric under system	
Railways, other gauge, double, single with electric under system	
Contours with sub features: Rocky, cliffs, Cuts	
Land features (Tribal, Ghans, hills, mountains, etc.)	
Towns or Villages, inhabited, deserted, Fort	
Hill, permanent, temporary, Tower, Antiquities	
Temples, Churches, Mosques, Temples, Temples, Temples	
Lighthouses, Lightships, Buoys, lights, unlighted, Anchorage	
Mine, View on hills, Great, Road	
Palms, pines, other, Flatland, Conifer, Bamboo, Other trees	
Arms, cultivated, wooded, Surveyed, trees	
Boundary, international	
State, demarcated, undemarcated	
district, subdivision, tank or lake, forest	
Boundary prism, surveyed, uncoloured	
Height, triangulated station, point, approximate	
Bench mark, geodetic, levelling, aerial	
Post office, Telegraph office, Outpost, tank	
Rest house or inspection bungalow, Circuit house, Police station	
Camping ground, Forest, reserved, protected	
Sancti nary, administrative, locality or trail	
Hospital, Dispensary, Veterinary Hospital / Dispensary	
Air station, Helipad, Tourist site	
Power line, with pylons surveyed, with poles unsurveyed	

Legend

- Proposed Centre Line
- Non Forest Land
- Balance Forest Area
- Proposed Diversion of Forest Land
- Existing Road Formation

NOTES :-

Heights are in metres and above Indian mean sea level
Contours are approximate
A relative height of 20 m. represents the approximate height in metres, between the top and bottom of a slope
Personal stations in the sheet are generally located from October to June and 30m service is available on them from July to September at the place indicated as such
Tanks, shown in this sheet, usually contain water from July to December
Wells and tube wells are shown throughout the sheet, only the important ones have been shown
Unimproved roads in this sheet are generally metalled in dry season. Permission to use these along with the fluctuations of the channel
The dotted boundary in the sheet or data sheet follows the main deep water channel and all change with the fluctuations of the channel

COMPILATION INDEX

A Surveyed during 1973-74 Updated for major details during 2006-08



Projection - UTM Datum - WGS 84

Magnetic Variation from True North about 4° East in 1995.
(increasing by about 1° annually)

1:50,000

Scale 1:50,000
CONTOUR INTERVAL 20 METRES

For further details about the map, please contact:

Director
Uttarakhand & West Uttar Pradesh Geo-Spatial Data Centre
Survey of India, 17 C. C. Road
Dehra Dun
Fax : 0135 - 2656402

WEBSITE : www.surveyofindia.gov.in

Reproduction in whole or part by any means is prohibited

