

H43E10 (53A/10)	H43E14 (53A/14)	H43F2 (53E/2)
H43E11 (53A/11)	H43E15 (53A/15)	H43F3 (53E/3)
H43E12 (53A/12)	H43E16 (53A/16)	H43F4 (53E/4)

1 Kullu, HIMACHAL PRADESH.
2 Shimla, HIMACHAL PRADESH.
3 Navsindhar, PUNJAB.

CONVENTIONAL SYMBOLS

Express Highway with toll, with bridge, with distance stone
Roads, metalled: according to importance
Unmetalled Road, Cart-track, Pack-track and pass, Foot-path
Swamps with track in bed, underflow, Canal
Dams: masonry or rock-filled, hardwood, W.A.
River: dry with water channel, with island & rocks, Tidal river
Submerged rocks, Shoal, Swamp, Reeds
Walls: lined, unlined, Tube-well, Spring, Tanks, perennial, dry
Embankment: road or rail, trestle, Broken ground
Railways, broad gauge: double, single with station, under constr.
Railways, other gauges: double, single with station, stone, etc.
Mineral line or tramway, Kin. Cutting with tunnel
Contours with sub-features, Rocky slopes, Cliffs
Sand features: (Dune, Sand-hill, dunes, etc.)
Towns or Villages: inhabited, deserted, Fort
Hills: permanent, temporary, Tower, Archaic
Temple, Chhatra, Church, Mosque, Vihar, Tomb, Grave
Lighthouse, Lightship, Buoy, lighted, unlighted, Anchorage
Mine: Vise on mella, Grass, Scrub
Palms: palm, other, Plantain, Coffee, Bamboo, Other trees
Aves: cultivated, wooded, Surveyed tree
Boundary, International
State demarcated, undemarcated
district, subdivision, taluk or tehsil, forest
Boundary Pillar: surveyed, unlocated
Height, triangulation station, point, approximate
Bench-mark, geodetic, tertiary, canal
Post office, Telegraph office, Overhead tank
Airstrip, Aerodrome, Landing ground, Civil House, Police Station
Camping ground, Forest: reserved, protected
Speed names: administrative, locality or tribal
Hospital, Dispensary, Veterinary Hospital / Dispensary
Aerodrome, Helipad, Tourist site
Power line: with pylons surveyed, with poles unsurveyed

REFERENCES

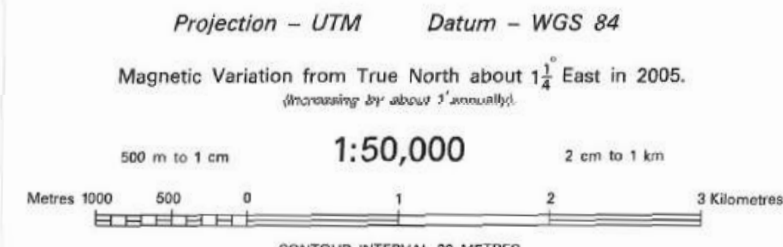
NH 21 National Highway No. 21

NOTES

Contours are approximate.
Cultivation is periodic and dependent on rainfall.
Height is in metres and above Indian mean sea level.
A relative height, Δ , represents the approximate height, in metres, between the top and bottom of a steep slope.
The exterior boundaries of areas of Reserved or Protected forests are shown by green ribbons.

COMPLETION INDEX

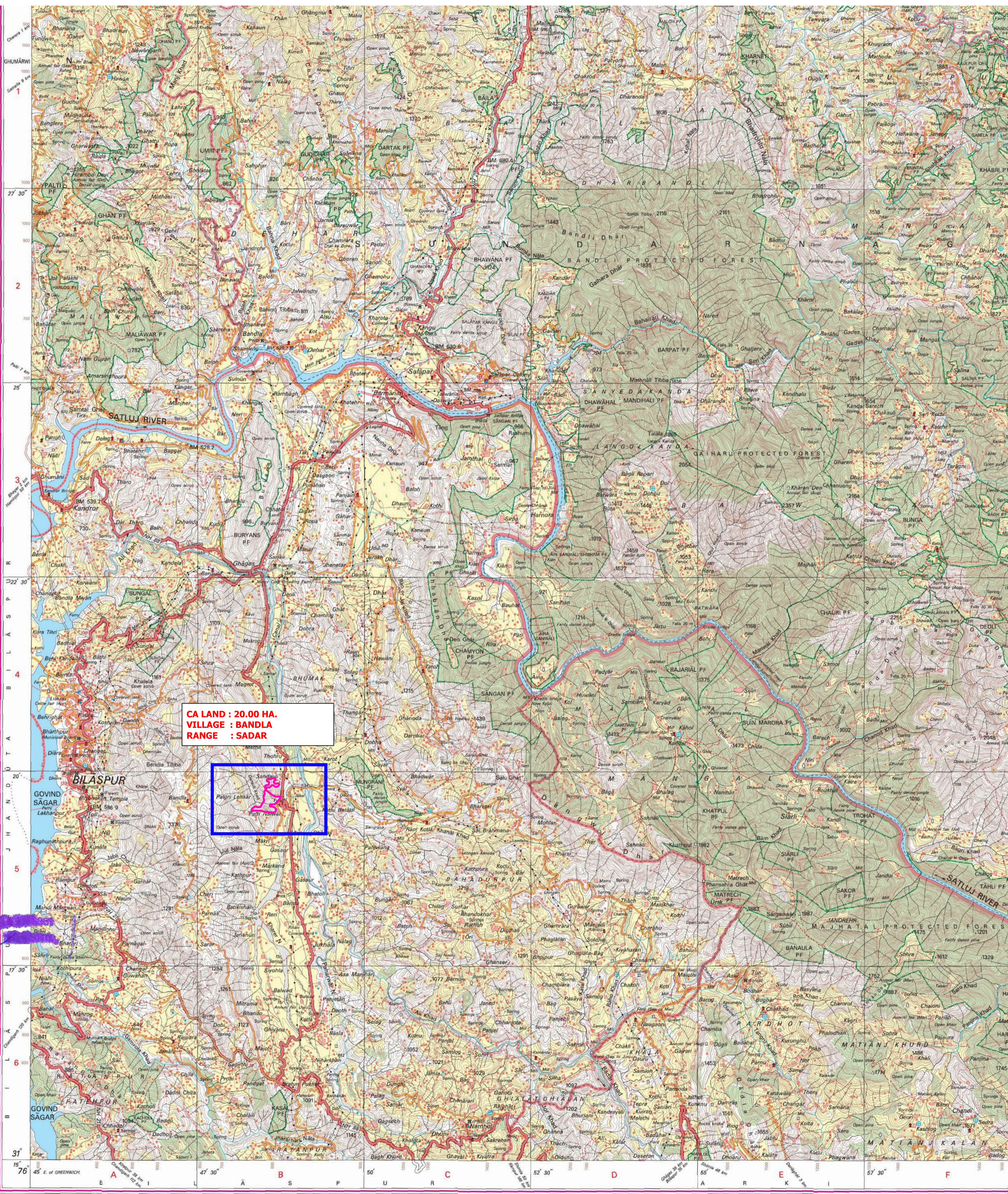
A. Compiled from 1:25,000 scale survey, carried out during 1983-84.
Updated for major details during 2009-06.



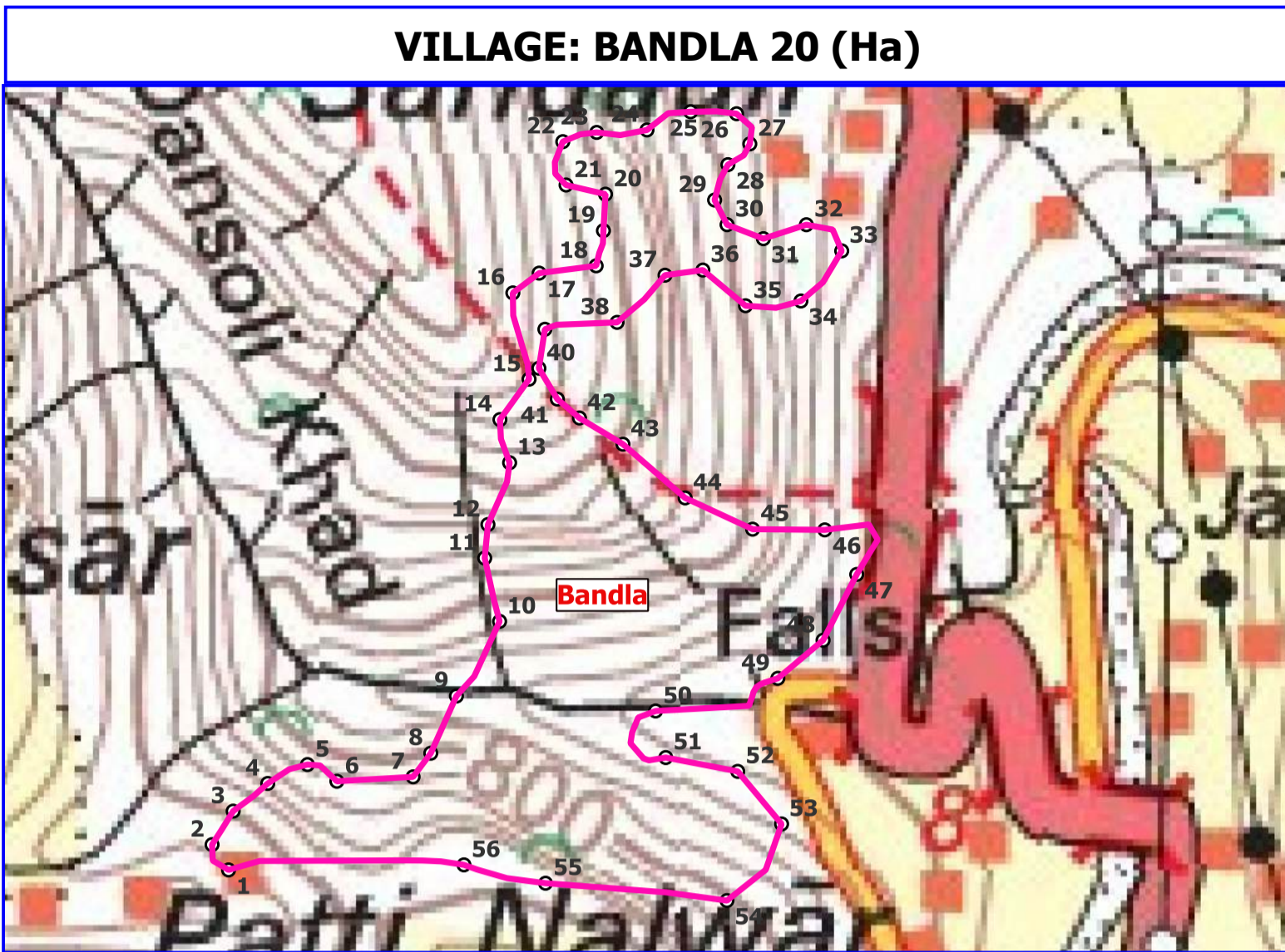
For further details about this map, please contact
Director
Himachal Pradesh Geo-Spatial Data Centre
Survey of India, Sector 32 A
Chandigarh.

WEBSITE - www.surveyofindia.gov.in

Reproduction in whole or part by any means is prohibited without the written permission of Survey of India, the National Mapping Agency.



GEO REFERENCE MAP OF CA LAND 20.00 HA. AT VILLAGE: Bandla IN Sadar RANGE ON SURVEY OF INDIA TOPOSHEET IN 1:50000 SCALE



"GPS"	"Latitude"	"Longitude"
1	31° 19' 29.759" N	76° 48' 19.648" E
2	31° 19' 30.620" N	76° 48' 19.016" E
3	31° 19' 31.737" N	76° 48' 19.866" E
4	31° 19' 32.651" N	76° 48' 21.242" E
5	31° 19' 33.265" N	76° 48' 22.813" E
6	31° 19' 32.687" N	76° 48' 23.956" E
7	31° 19' 32.793" N	76° 48' 26.949" E
8	31° 19' 33.581" N	76° 48' 27.659" E
9	31° 19' 35.492" N	76° 48' 28.703" E
10	31° 19' 37.984" N	76° 48' 30.445" E
11	31° 19' 40.125" N	76° 48' 29.901" E
12	31° 19' 41.254" N	76° 48' 30.050" E
13	31° 19' 43.324" N	76° 48' 30.940" E
14	31° 19' 44.783" N	76° 48' 30.588" E
15	31° 19' 46.128" N	76° 48' 31.758" E
16	31° 19' 49.044" N	76° 48' 31.177" E
17	31° 19' 49.696" N	76° 48' 32.222" E
18	31° 19' 49.910" N	76° 48' 34.463" E
19	31° 19' 51.092" N	76° 48' 34.772" E
20	31° 19' 52.319" N	76° 48' 34.876" E
21	31° 19' 52.650" N	76° 48' 33.335" E
22	31° 19' 54.113" N	76° 48' 33.235" E
23	31° 19' 54.405" N	76° 48' 34.571" E
24	31° 19' 54.460" N	76° 48' 36.546" E
25	31° 19' 55.048" N	76° 48' 38.269" E
26	31° 19' 54.958" N	76° 48' 40.072" E
27	31° 19' 53.934" N	76° 48' 40.573" E
28	31° 19' 53.246" N	76° 48' 39.700" E

"GPS"	"Latitude"	"Longitude"
29	31° 19' 52.062" N	76° 48' 39.155" E
30	31° 19' 51.224" N	76° 48' 39.627" E
31	31° 19' 50.732" N	76° 48' 41.045" E
32	31° 19' 51.179" N	76° 48' 42.740" E
33	31° 19' 50.279" N	76° 48' 44.111" E
34	31° 19' 48.612" N	76° 48' 42.477" E
35	31° 19' 48.482" N	76° 48' 40.301" E
36	31° 19' 49.709" N	76° 48' 38.649" E
37	31° 19' 49.556" N	76° 48' 37.161" E
38	31° 19' 47.994" N	76° 48' 35.248" E
39	31° 19' 47.801" N	76° 48' 32.411" E
40	31° 19' 46.492" N	76° 48' 32.149" E
41	31° 19' 45.442" N	76° 48' 32.854" E
42	31° 19' 44.791" N	76° 48' 33.711" E
43	31° 19' 43.885" N	76° 48' 35.402" E
44	31° 19' 42.041" N	76° 48' 37.805" E
45	31° 19' 40.950" N	76° 48' 40.435" E
46	31° 19' 40.887" N	76° 48' 43.266" E
47	31° 19' 39.368" N	76° 48' 44.491" E
48	31° 19' 37.170" N	76° 48' 43.129" E
49	31° 19' 35.911" N	76° 48' 41.327" E
50	31° 19' 34.878" N	76° 48' 36.510" E
51	31° 19' 33.304" N	76° 48' 36.878" E
52	31° 19' 32.798" N	76° 48' 39.693" E
53	31° 19' 31.002" N	76° 48' 41.381" E
54	31° 19' 28.451" N	76° 48' 39.188" E
55	31° 19' 29.136" N	76° 48' 32.079" E
56	31° 19' 29.800" N	76° 48' 28.889" E

PROJECT
Rehabilitation and Upgrading of Existing Road to 4 Lane with Paved Shoulder from Shalaghat to Nauli Chowk (Shalaghat to Reota Village-Pkg IIA, Reota Village to Daseharan Village-Pkg IIB & Daseharan Village to Nauli Chowk-Pkg IIC) of NH 205 [Design Chainage - Km 28+800 to Km 58+450, Design Length - 29.65 Km] in the State of Himachal Pradesh

CLIENT
NATIONAL HIGHWAYS AUTHORITY OF INDIA

CONSULTANTS
INTERCONTINENTAL CONSULTANTS AND TECHNOCRATS PVT. LTD.
A8, Green Park New Delhi-110016

Prepared by: Kiran Kumar Approved by: Tirthankar Banerjee

No. H43E7
 Scale 1:50,000

H43E2 (53A/2)	H43E6 (53A/6)	H43E10 (53A/10)
H43E3 (53A/3)	H43E7 (53A/7)	H43E11 (53A/11)
H43E4 (53A/4)	H43E8 (53A/8)	H43E12 (53A/12)

1 Una, HIMACHAL PRADESH. 2 Kangra, HIMACHAL PRADESH.
 3 Mandi, HIMACHAL PRADESH. 4 Rampur, HIMACHAL PRADESH.
 5 Ludhiana, PUNJAB. 6 Solan, HIMACHAL PRADESH.

भारतीय सर्वेक्षण विभाग SURVEY OF INDIA
 1st Edition 2011. Price: Rs. 70/-

CONVENTIONAL SYMBOLS

Express highway with toll with bridge with distance stone	
Roads, metalled according to importance	
Roads, double cartway according to importance	
Unmetalled road. Cart track. Pack track with posts. Foot path	
Streams with track in bed. Underflow. Canal	
Dams: masonry or rock-filled. earthwork. Weir	
River: dry with water channel, with island & rocks. Tidal river	
Submerged rocks. Shoal. Swamp. Reeds	
Wells: lined. unlined. Tube-well. Spring. Tank. Perennial. dry	
Embankments: road or rail. bank. Broken ground	
Railways: broad gauge: double. single with station; under construction	
Railways: other gauges: double. single with distance stone; under construction	
Mineral line or tramway. Kin. Cables with tunnel	
Contours with sub-features. Rocky slopes. Cliffs	
Sand features (Tidal. (Ziaand hills) permanent). (Dunes) shifting	
Towns or Villages inhabited. deserted. Fort	
Huts: permanent. temporary. Tower. Ashlars	
Temple. Chhatra. Church. Mosque. Ghat. Tomb. Graves	
Lighthouse. Lightship. Buoy. Lighted. unlighted. Anchorage	
Mine. View on belts. Grass. Scrub	
Palms: palmyra. other. Plantain. Cane. Bamboo. Other trees	
Areas: cultivated. wooded. Surveyed line	
Boundary: international	
state demarcated; undemarcated	
district; subdivision; taluk or tehsil; forest	
Boundary pillars: surveyed; uncalculated	
Heights: triangulated. station. peak. approximate	
Bench-mark: geodetic. tertiary. canal	
Post office. Telegraph office. Overhead tank	
Rest house or inspection bungalow. Civil house. Police station	
Camping ground. Forest: reserved. protected	
Spaced names: administrative. locality or tribal	
Hospital. Dispensary. Veterinary Hospital / Dispensary	
Aerodrome. Helipad. Tourist site	
Power line: with pylons surveyed; with poles unsurveyed	

REFERENCE
 SH 22 State Highway No. 22

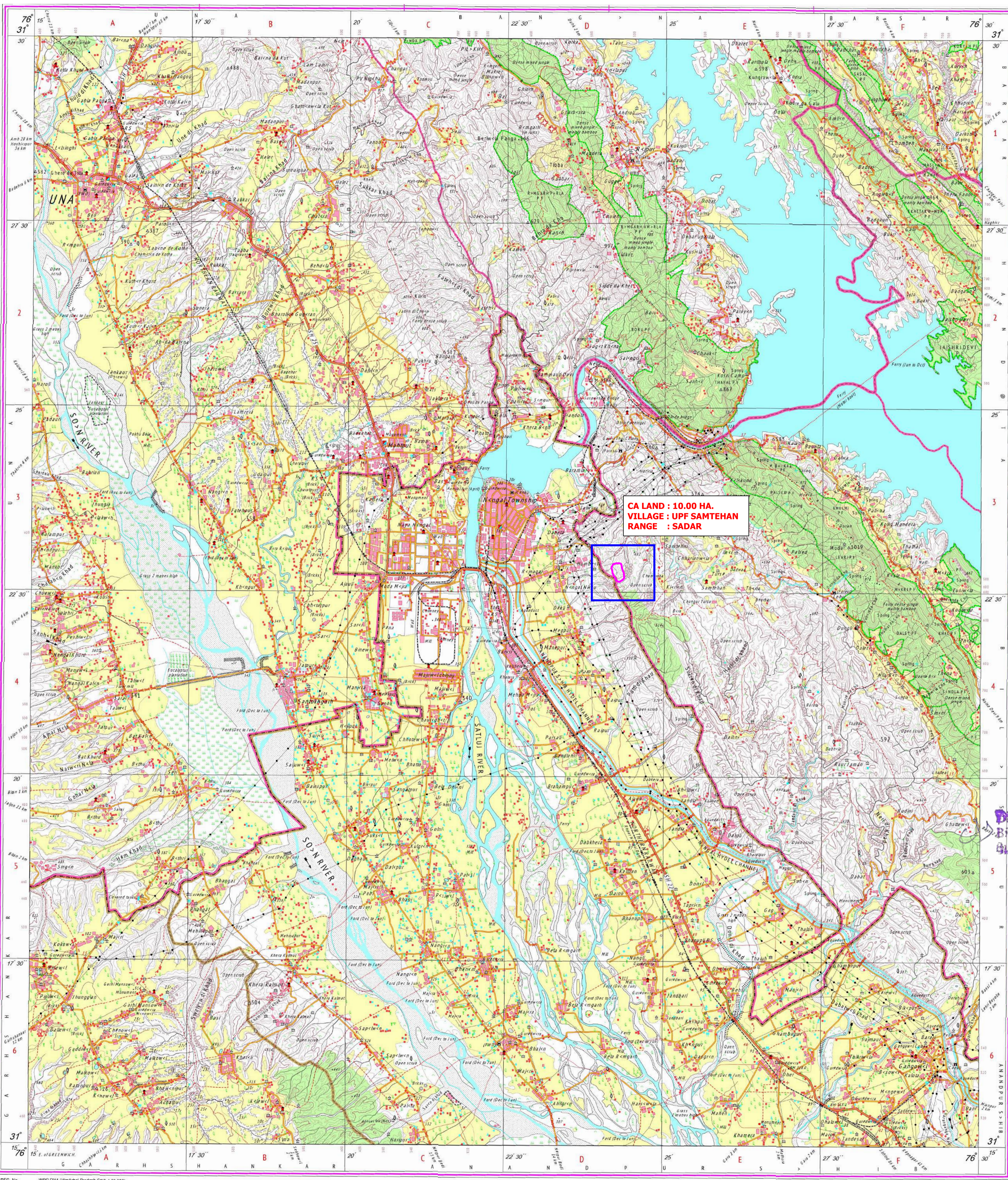
NOTES :-
 Heights are in metres and above Indian mean sea level.
 Contours are approximate.
 All unmetalled roads in this sheet are usually motorable in dry season.
 The areas adjoining Satluj and Soan Rivers are liable to change owing to continual fluctuation in the course of the rivers.
 The exterior boundaries of areas of reserved or Protected Forests are shown by green bands.

COMPILATION INDEX
 A. Compiled from 1:25,000 scale survey, carried out during 1982-83. Updated for major details during 2005-06.

Projection - UTM Datum - WGS 84
 Magnetic Variation from True North about 1 1/2° East in 2005. (Increasing by about 1° annually).
 Scale 1:50,000
 600 m to 1 cm
 2 km to 1 cm
 CONTOUR INTERVAL 20 METRES

For further details about this map, please contact
 Director
 Himachal Pradesh Geo-Spatial Data Centre
 Survey of India, Sector 32 A
 Chandigarh.

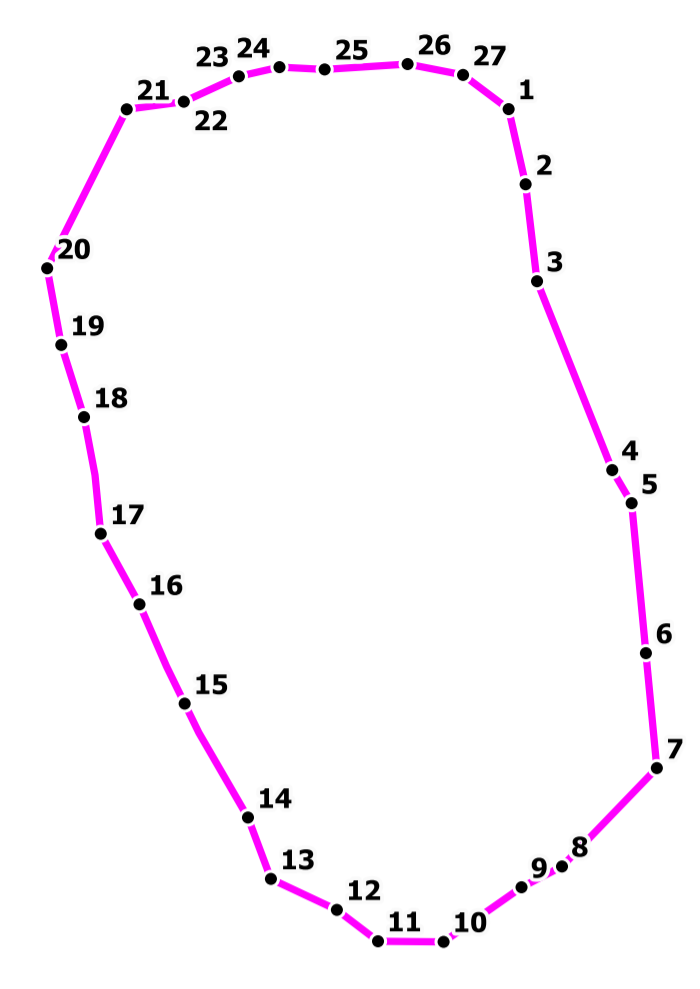
WEBSITE - www.surveyofindia.gov.in
 Reproduction in whole or part by any means is prohibited without the written permission of Survey of India. the



**CA LAND : 10.00 HA.
 VILLAGE : UPF SAMTEHAN
 RANGE : SADAR**

**GEO REFERENCE MAP OF CA LAND 10.00 HA.
 AT VILLAGE: UPF SAMTEHAN IN NAINA DEVI RANGE
 ON SURVEY OF INDIA TOPOSHEET IN 1:50000 SCALE**

VILLAGE: UPF SAMTEHAN 10.00 (Ha)



GPS	Latitude	Longitude
1	31° 22' 53.270" N	76° 24' 19.480" E
2	31° 22' 51.975" N	76° 24' 19.801" E
3	31° 22' 50.307" N	76° 24' 20.005" E
4	31° 22' 47.045" N	76° 24' 21.463" E
5	31° 22' 46.472" N	76° 24' 21.843" E
6	31° 22' 43.893" N	76° 24' 22.090" E
7	31° 22' 41.916" N	76° 24' 22.280" E
8	31° 22' 40.246" N	76° 24' 20.355" E
9	31° 22' 39.898" N	76° 24' 19.539" E
10	31° 22' 38.977" N	76° 24' 17.964" E
11	31° 22' 39.001" N	76° 24' 16.651" E
12	31° 22' 39.550" N	76° 24' 15.835" E
13	31° 22' 40.097" N	76° 24' 14.521" E
14	31° 22' 41.156" N	76° 24' 14.077" E
15	31° 22' 43.127" N	76° 24' 12.838" E
16	31° 22' 44.842" N	76° 24' 11.959" E
17	31° 22' 46.063" N	76° 24' 11.201" E
18	31° 22' 48.072" N	76° 24' 10.896" E
19	31° 22' 49.316" N	76° 24' 10.459" E
20	31° 22' 50.636" N	76° 24' 10.195" E
21	31° 22' 53.351" N	76° 24' 11.830" E
22	31° 22' 53.469" N	76° 24' 12.975" E
23	31° 22' 53.893" N	76° 24' 14.084" E
24	31° 22' 54.042" N	76° 24' 14.900" E
25	31° 22' 53.992" N	76° 24' 15.804" E
26	31° 22' 54.067" N	76° 24' 17.468" E
27	31° 22' 53.868" N	76° 24' 18.576" E

Divisional Forest Officer
 Bhagspur Forest Division
 Bhagspur (H.P.)

PROJECT
 Rehabilitation and Upgrading of Existing Road to 4 Lane with Paved Shoulder from Shalaghat to Nauri Chowk (Shalaghat to Reota Village-Pkg IIA, Reota Village to Daseharan Village-Pkg IIB & Daseharan Village to Nauri Chowk-Pkg IIC) of NH 205 [Design Chainage – Km 28+800 to Km 58+450, Design Length – 29.65 Km] in the State of Himachal Pradesh

CLIENT

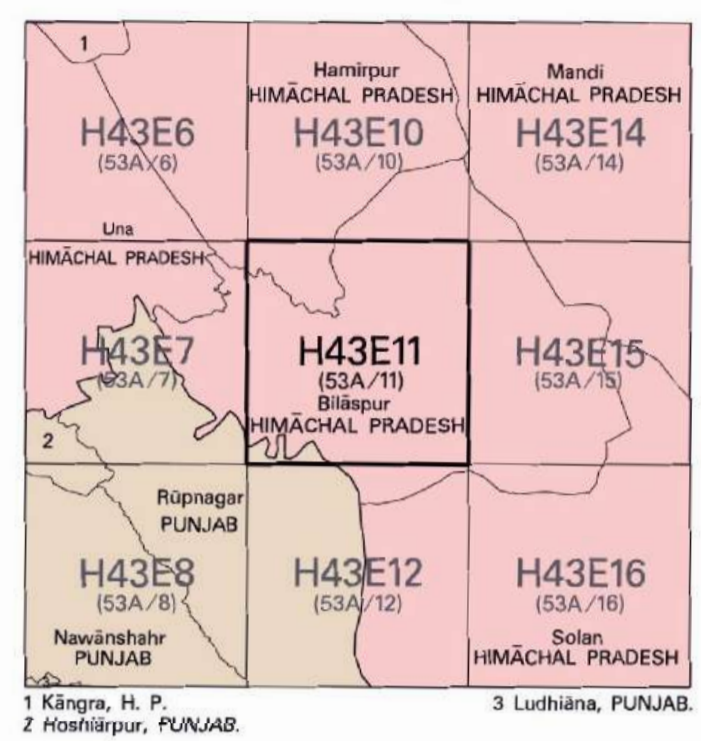
NATIONAL HIGHWAYS AUTHORITY OF INDIA

CONSULTANTS

INTERCONTINENTAL CONSULTANTS AND TECHNOCRATS PVT. LTD.
 A8, Green Park New Delhi-110016

Prepared by: Kiran Kumar Approved by: Tirthankar Banerjee

No. H43E11
 Scale 1:50,000



भारतीय सर्वेक्षण विभाग SURVEY OF INDIA
 1st Edition 2010. Price: ₹ 70/-

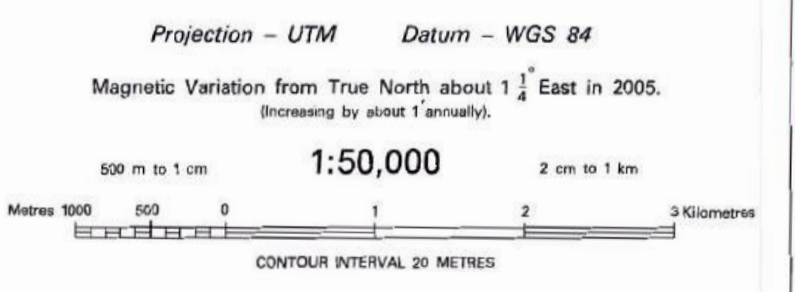
CONVENTIONAL SYMBOLS

Express highway, with toll, with bridge, with distance stone	
Roads, metalled, according to importance	
Roads, double carriageway, according to importance	
Unmetalled road, Cart track, Path-track with steps, Foot-path	
Shoorts: with track in bed, ungraded, Canal	
Dams: masonry or rock-fill, earthwork, Wall	
River: dry silt water channel, with island & rocks, Tidal river	
Sideline/rocky Shoat, Swamps, Reeds	
Wells: lined, unlined, Tube-well, Spring, Tanks: perennial, dry	
Embankments: road or rail, tank, Broken ground	
Railways, broad gauge: double, single with station/under station	
Railways, other gauges: double, single with distance stone, do	
Mineral line or tramway, Kin, Cutting with tunnel	
Contours with sub-features: Rocky slopes, Cliffs	
Sand features: (Wind-blown-hills) (dunes) (dunes) (shifting)	
Towns or Villages: Municipal, deserted, Fort	
Huts: permanent, temporary, Tower, Antiquities	
Temples, Chhatra, Church, Mosque, Ghat, Tomb, Grave	
Lighthouses, Lightship Buoys: lighted, unlighted, Anchorage	
Mine: Vene on traffic, Grass, Scrub	
Palms: palm-tree, other: Plantain, Coffee, Bamboo, Other trees	
Areas: cultivated, wooded, Surveyed tree	
Boundary, international	
State: demarcated, undemarcated	
District: subdivision, taluk or taluk, forest	
Boundary pillars: surveyed, un-surveyed	
Height: triangulated station, peak, approximate: 0, 200, 400, 600, 800, 1000, 1200, 1400, 1600, 1800, 2000, 2200, 2400, 2600, 2800, 3000, 3200, 3400, 3600, 3800, 4000, 4200, 4400, 4600, 4800, 5000	
Bench-mark: geodetic, levelling, canal	
Post office, Telegraph office, Overhead tank	
Rail house or inspection bungalow, Circuit house, Police station	
Camping ground, Forest: reserved, protected	
Speed name: administrative, locality or village	
Hospital, Dispensary, Veterinary Hospital/Dispensary	
Aerodrome, Helipad, Tourist site	
Power line: with pylons surveyed, with poles unsurveyed	

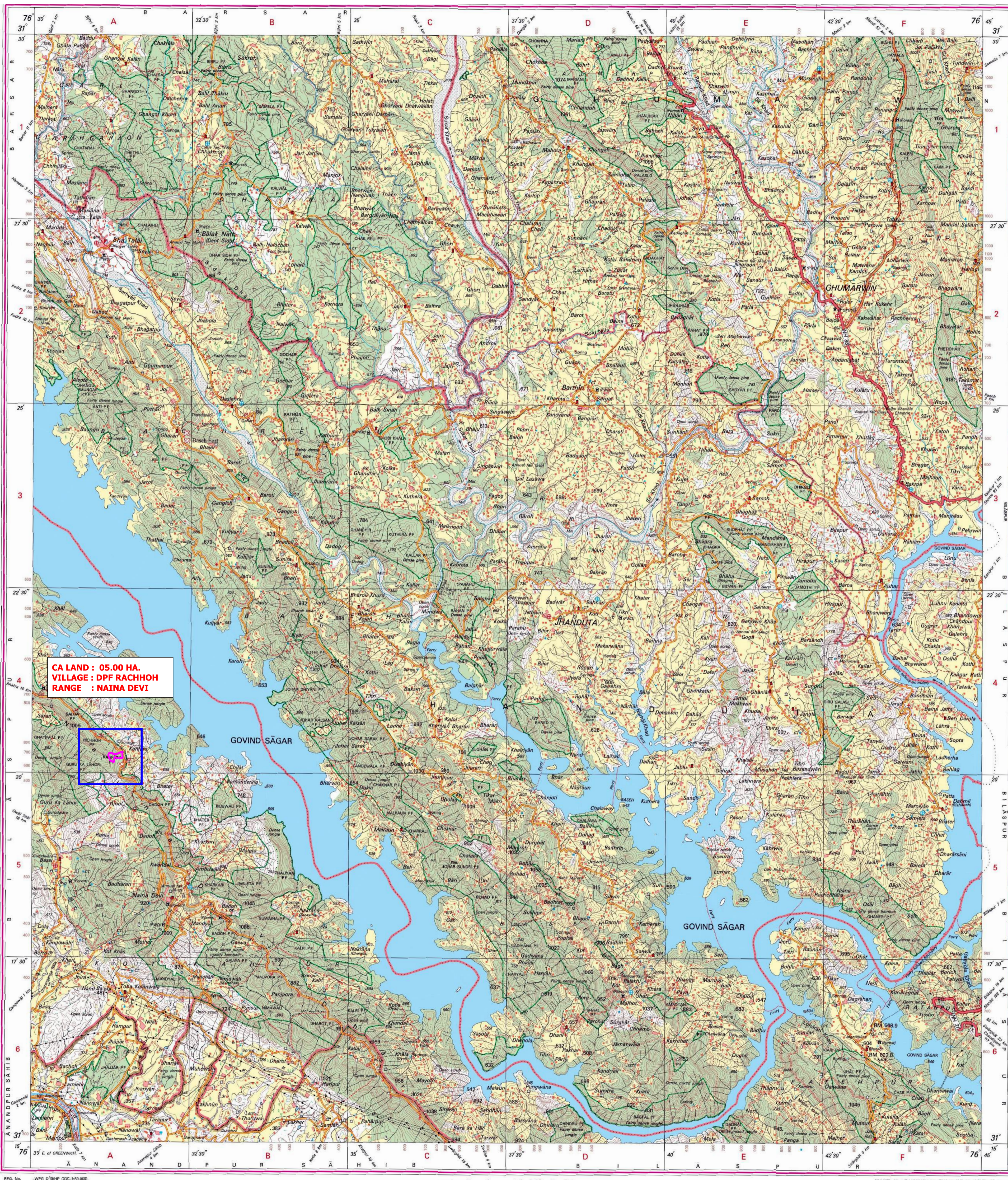
REFERENCE
 AN 88 National Highway No. 88
 CT Covered tank

NOTES :-
 Contours are approximate.
 Heights are in metres and above Indian mean sea level.
 Cultivation is periodic and dependent on rainfall.
 A relative height, R, represents the approximate height, in metres, between the top and bottom of a steep slope.
 The vertical boundaries of Reserved or Protected Forests are shown by green ribbons.
 Tanks shown dry in this sheet usually contain water from July to March.
 All unmetalled roads in this sheet are metalled in dry season.
 A relative height, e.g., 50, marked along a canal indicates the height of the top of the canal embankment above the adjacent country.

COMPILATION INDEX
 A. Compiled from 1:25,000 scale survey, carried out during 1983-84.
 Updated for minor details during 2005-06.

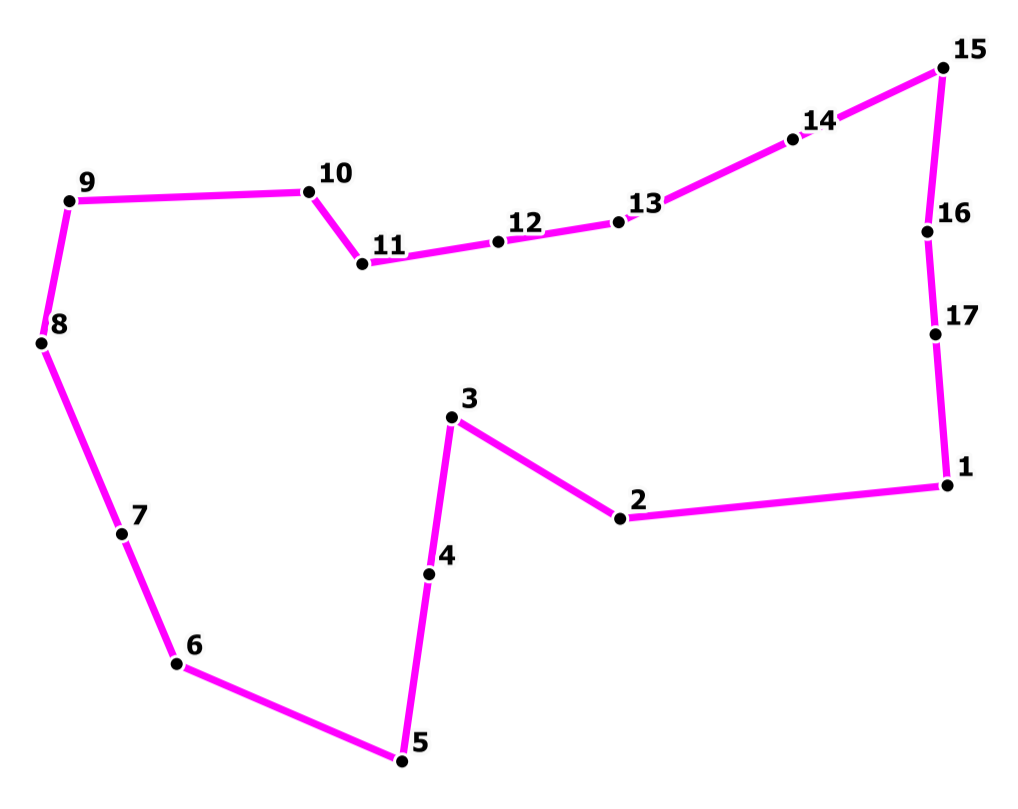


Projection - UTM Datum - WGS 84
 Magnetic Variation from True North about 1 1/2° East in 2005.
 (Increasing by about 1° annually).
 500 m to 1 cm
 1:50,000
 2 cm to 1 km
 3 Kilometres
 CONTOUR INTERVAL 20 METRES
 For further details about this map, please contact:
 Director
 Himachal Pradesh Geo-Spatial Data Centre
 Survey of India, Sector 32 A
 Chandigarh.
 WEBSITE - www.surveyofindia.gov.in



GEO REFERENCE MAP OF CA LAND 05.00 HA.
 AT VILLAGE: DPF RACHHOH IN NAINA DEVI RANGE
 ON SURVEY OF INDIA TPO SHEET IN 1:50000 SCALE

VILLAGE: DPF RACHHOH 05.00 (Ha)



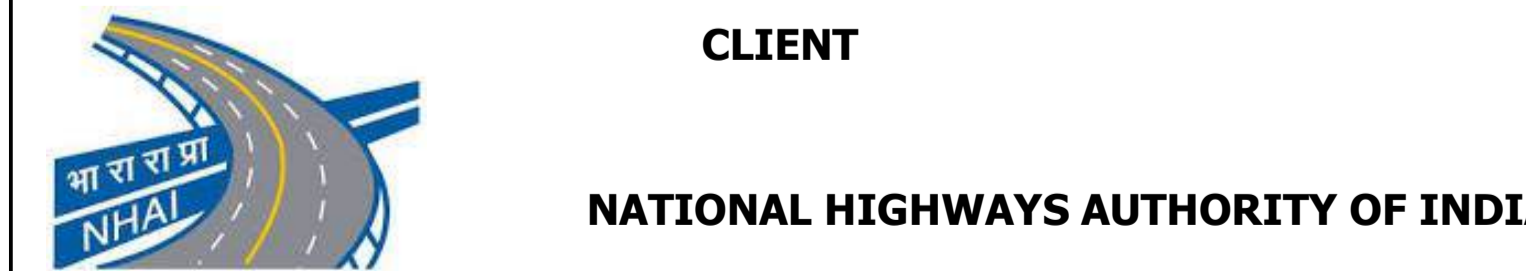
GPS	Latitude	Longitude
1	31° 20' 12.167" N	76° 31' 26.033" E
2	31° 20' 11.797" N	76° 31' 21.111" E
3	31° 20' 13.134" N	76° 31' 18.605" E
4	31° 20' 11.115" N	76° 31' 18.232" E
5	31° 20' 8.708" N	76° 31' 17.786" E
6	31° 20' 10.005" N	76° 31' 14.421" E
7	31° 20' 11.688" N	76° 31' 13.626" E
8	31° 20' 14.159" N	76° 31' 12.458" E
9	31° 20' 15.987" N	76° 31' 12.908" E
10	31° 20' 16.063" N	76° 31' 16.507" E
11	31° 20' 15.125" N	76° 31' 17.292" E
12	31° 20' 15.387" N	76° 31' 19.339" E
13	31° 20' 15.618" N	76° 31' 21.150" E
14	31° 20' 16.654" N	76° 31' 23.782" E
15	31° 20' 17.549" N	76° 31' 26.058" E
16	31° 20' 15.440" N	76° 31' 25.784" E
17	31° 20' 14.116" N	76° 31' 25.885" E

Divisional Engineer
 Bilaspur District
 Bilaspur (H.P.)

PROJECT

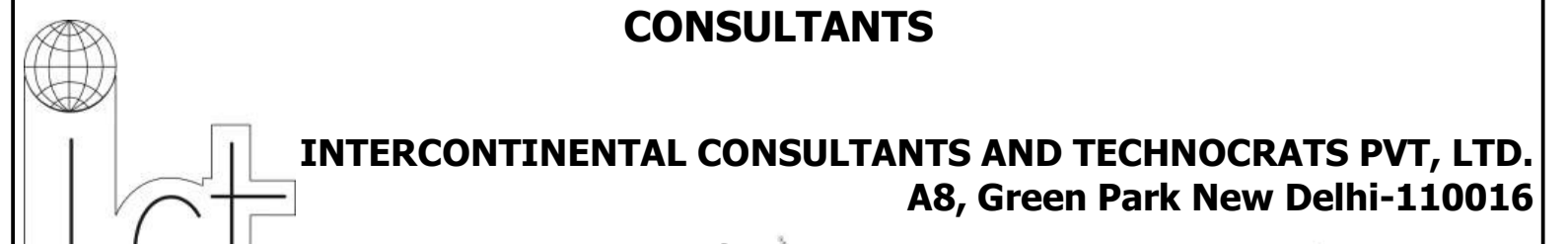
Rehabilitation and Upgrading of Existing Road to 4 Lane with Paved Shoulder from Shalaghat to Naini Chowk (Shalaghat to Reota Village-Pkg IIA, Reota Village to Daseharan Village-Pkg IIB & Daseharan Village to Naini Chowk-Pkg IIC) of NH 205 [Design Chainage - Km 28+800 to Km 58+450, Design Length - 29.65 Km] in the State of Himachal Pradesh

CLIENT



NATIONAL HIGHWAYS AUTHORITY OF INDIA

CONSULTANTS



INTERCONTINENTAL CONSULTANTS AND TECHNOCRATS PVT. LTD.
 A8, Green Park New Delhi-110016

Prepared by: Kiran Kumar Approved by: Tirthankar Banerjee