

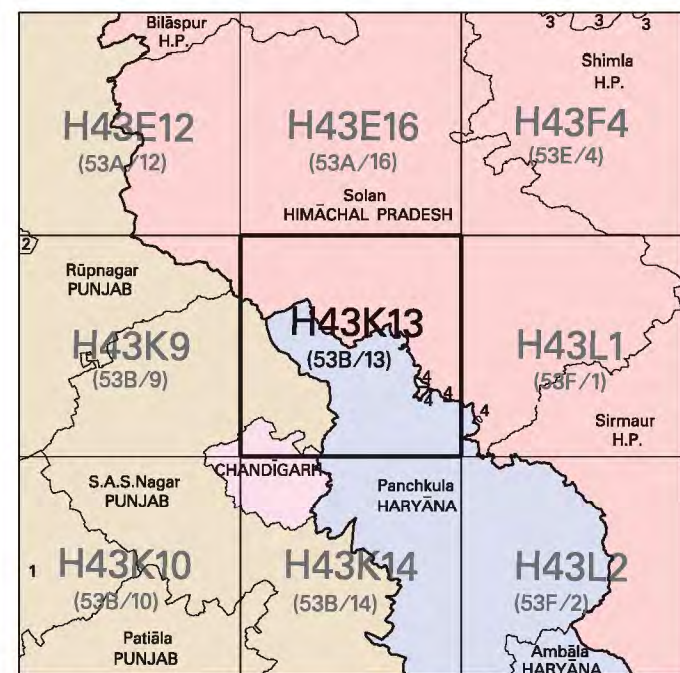


निर्यात के लिए नहीं NOT FOR EXPORT

OPEN SERIES
MAP

No. H43K13

Scale 1:50,000



1 Fatehgarh Sahib, PUNJAB.
2 Ludhiana, PUNJAB.
3 Mandi, HIMACHAL PRADESH.
4 Disputed (Panchkula, HARYANA).

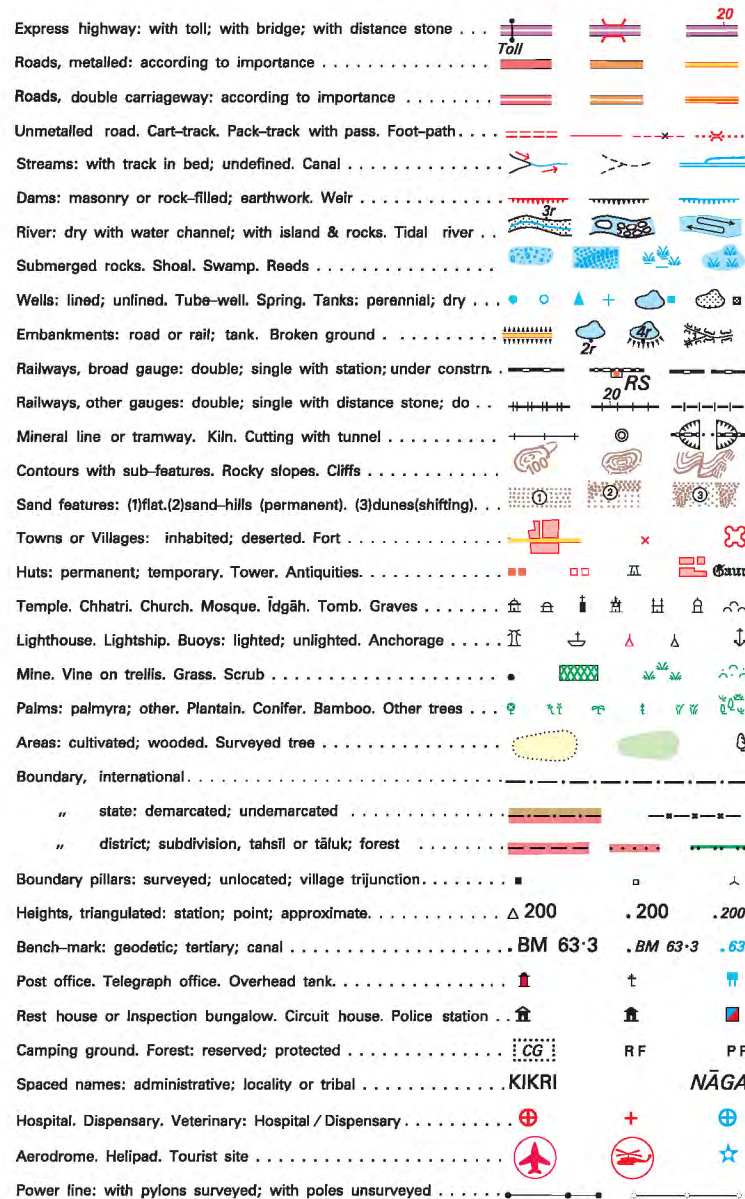
भारतीय सर्वेक्षण विभाग

SURVEY OF INDIA

1st Edition 2009.

Price : Rs. 50/-

CONVENTIONAL SYMBOLS



REFERENCES

NH 22 National Highway No. 22 City Chinmay

NOTES

The triangulated heights and contours in this sheet have not been adjusted to the heights of the spirit-levelled bench-marks and may not be strictly in accordance with them.
Heights are in metres and above Indian mean sea level.
Contours are approximate.
Tube-wells are numerous throughout the sheet, only the important ones have been shown.
Tanks, shown dry, in this area usually contain water from July to December.
Unmetalled roads and cart-tracks in this sheet are generally motorable in dry season.
A relative height, Δ , represents the approximate height in metres between the top and bottom of a steep slope.
The state boundaries between Chandigarh (UT) & Punjab, Chandigarh (UT) & Haryana, Haryana & Himachal Pradesh, Himachal Pradesh & Punjab States have been surveyed as pointed out by the local officials on the ground but have not been verified by the Governments concerned.
The administrative headquarters of Haryana and Punjab States are at Chandigarh.
Sector numbers in Chandigarh and Panchkula City areas are indicated by blue figures thus: 11.
The exterior boundaries of areas of Reserved or Protected Forests are shown by green ribbons.
Covered tank is shown thus:

COMPILATION INDEX

A. Compiled from 1:25,000 survey 1995-98
Updated for major details during 2005-06.

Projection - UTM Datum - WGS 84

Magnetic Variation from True North about 1° East in 2005.
(Increasing by about 1° annually).

1:50,000



CONTOUR INTERVAL 20 METRES

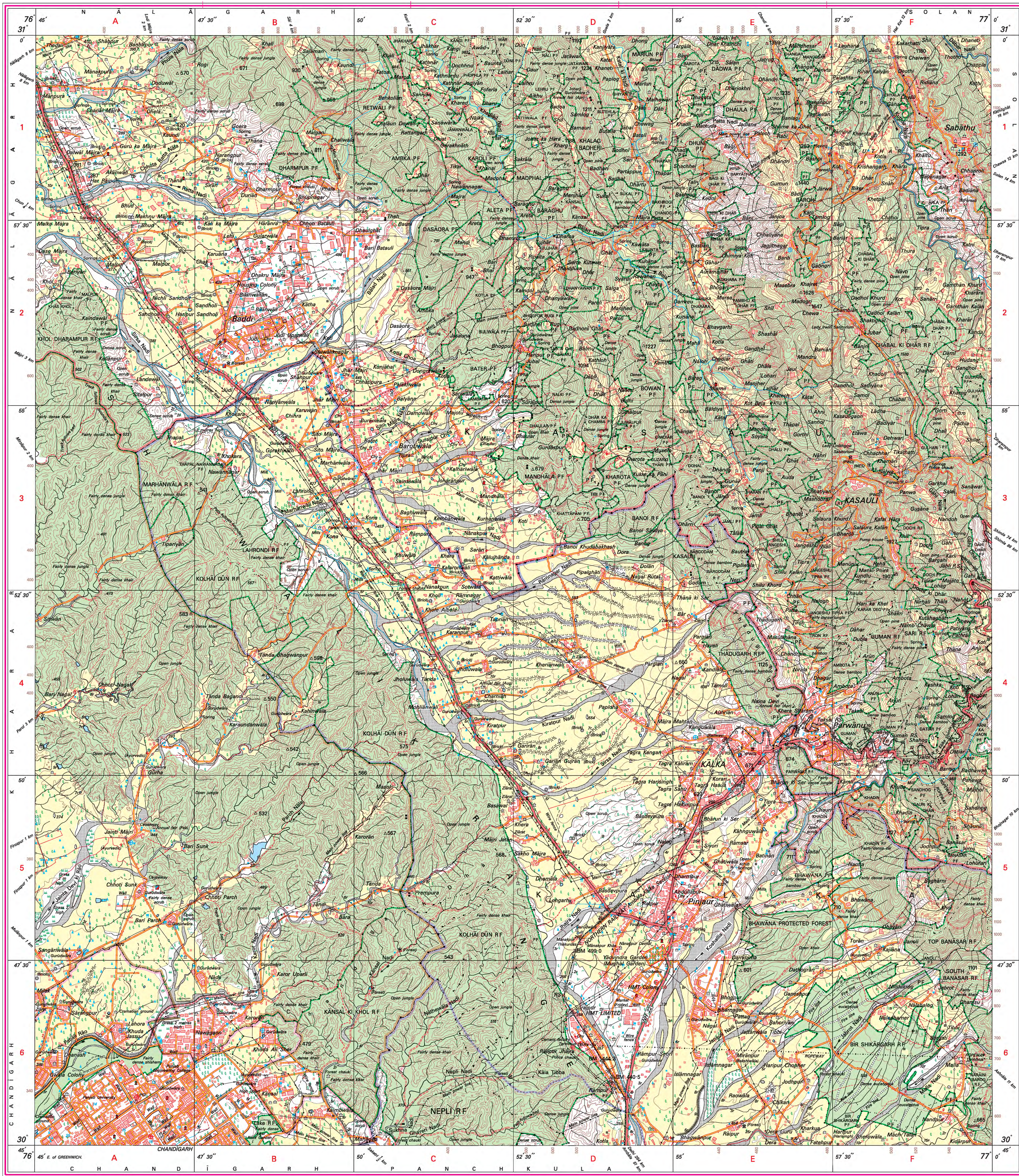
For further details about this map, please contact

Director
Punjab & Chandigarh Geo-Spatial Data Centre
Survey of India, Sector 32 A
Chandigarh.
Fax : 0172 - 2604671

WEBSITE - www.surveyofindia.gov.in

Reproduction in whole or part by any means is prohibited
without the written permission of Survey of India, the
National Mapping Agency.

GOVERNMENT OF INDIA COPYRIGHT, 2009.



REG. No. - WPG D 09 (P) & GDC-150,000-

भारत के महसूख के निदेशन में प्रकाशित,
Published under the direction of Surveyor General of India,
Survey of India, Hishimbarka Estate, Post Box No. 37, Dehra Dun-248001 (Uttarakhand),
Department of Science & Technology, Government of India.

PRINTED AT THE WESTERN PRINTING GROUP OF SURVEY OF INDIA.