

No. F42W13

Scale 1:50,000

F42Q12 (41K/12)	F42Q16 (41K/16)	F42R4 (41O/4)
F42W9 (41L/9)	Jūnāgadh GUJARAT F42W13 (41L/13)	F42X1 (41P/1)
F42W10 (41L/10)	F42W14 (41L/14)	F42X2 (41P/2)

भारतीय सर्वेक्षण विभाग

SURVEY OF INDIA

1st Edition 2011.

Price : Rs. 70/-

CONVENTIONAL SYMBOLS

Express highway; with toll; with bridge; with distance stone

Roads, metalled; according to importance

Roads, double carriageway; according to importance

Unmetalled road. Cart-track. Pack-track with pass. Foot-path

Streams; with track in bed; undefined. Canal

Dams; masonry or rock-filled; earthwork. Weir

River; dry with water channel; with island & rocks. Tidal river

Submerged rocks. Shoal. Swamp. Reeds

Wells; lined; unlined. Tube-well. Spring. Tanks; perennial; dry

Embankments; road or rail. tank. Broken ground

Railways, broad gauge; double; single with station; under constr.

Railways, other gauges; double; single with distance stone; do.

Mineral line or tramway. Kiln. Cutting with tunnel

Contours with sub-features. Rocky slopes. Cliffs

Sand features: (1) flat. (2) sand-hills (permanent). (3) dunes (shifting)

Towns or Villages; inhabited; deserted. Fort

Huts; permanent; temporary. Tower. Antiquities

Temple. Chhatra. Church. Mosque. Idgah. Tomb. Graves

Lighthouse. Lightship. Buoys; lighted; unlighted. Anchorage

Mine. Vine on trellis. Grass. Scrub

Palms; palmyra; other. Plantain. Coffee. Bamboo. Other trees

Areas; cultivated; wooded. Surveyed tree

Boundary; international

state; demarcated; undemarcated

district; subdivision; tahsil or taluk; forest

Boundary pillars; surveyed; unlocated

Heights; triangulated; station; point; approximate

Bench-mark; geodetic; tertiary; canal

Post office. Overhead tank

Rest house or inspection bungalow. Circuit house. Police station

Camping ground. Forest; reserved; protected

Spaced names; administrative; locality or tribal

Hospital. Dispensary. Veterinary Hospital / Dispensary

Aerodrome. Helipad. Tourist site

Power line; with pylons surveyed; with poles unsurveyed

REFERENCES

NH BE National Highway No. BE

WR Western Railway

NOTES :-

Heights and Contours have not been shown.

Gir Reserved Forest area is not included in any block, but is a part of Junāgadh District.

Tanks, shown dry, in this area usually contain water from July to September.

In area, where no tube well exists, cultivation is periodic and dependent on rainfall.

COMPILATION INDEX

A Compiled from 1:25,000 surveyed during 1990-91.

Updated for major details during 2005-06.

Projection - UTM Datum - WGS 84

Magnetic Variation from True North about 1/2° West in 2005.

(Decreasing by about 1" annually).

1:50,000

Metres 1000 500 0 1 2 3 Kilometres

For further details about this map, please contact

Director

Gujarat, Damān & Diu Geo-Spatial Data Centre

Survey of India, Sector (10A)

Gāndhīnagar.

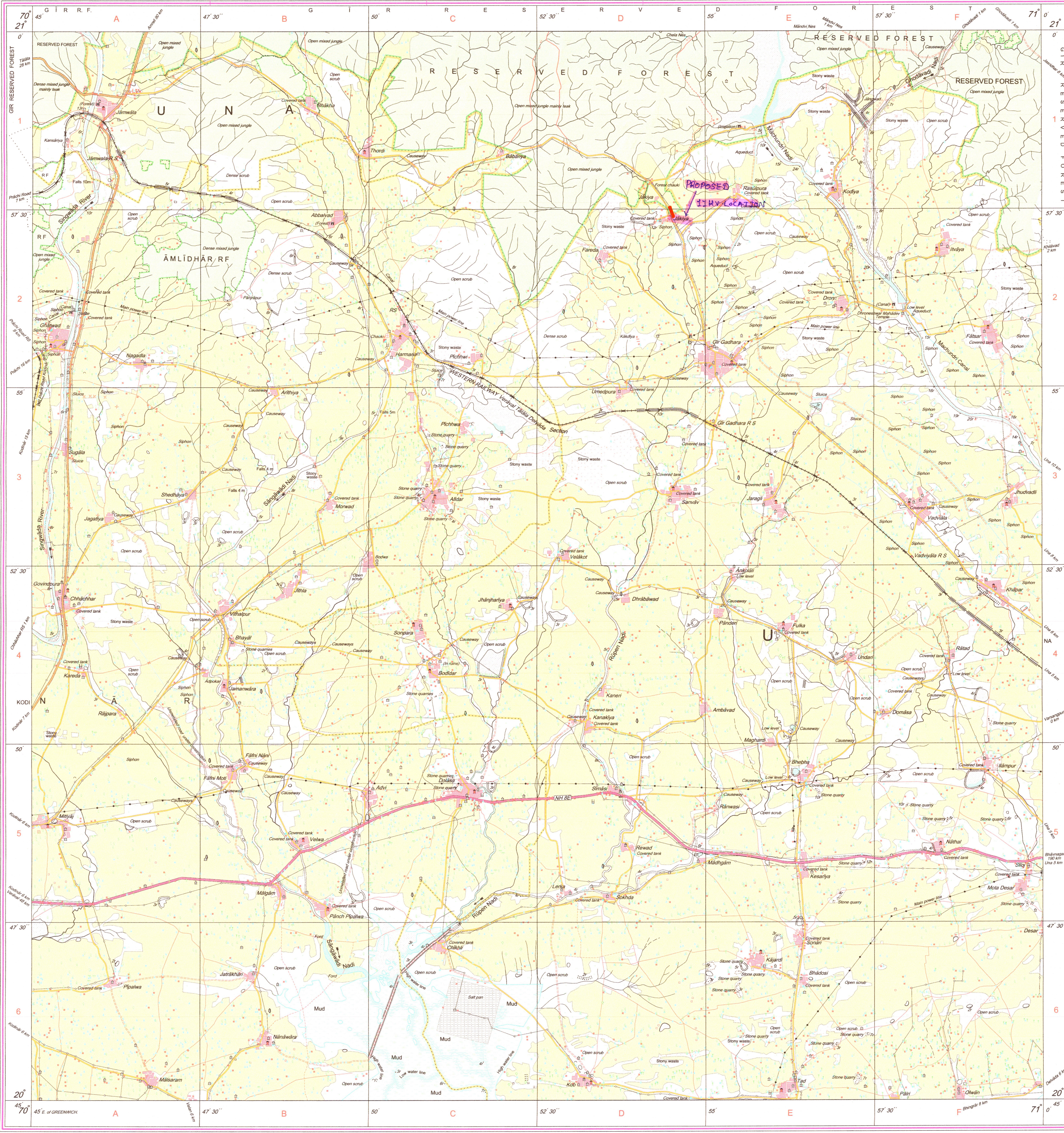
WEBSITE - www.surveyofindia.gov.in

Reproduction in whole or part by any means is prohibited

without the written permission of Survey of India, the

National Mapping Agency.

GOVERNMENT OF INDIA COPYRIGHT, 2011.



REG. No. -SPG D'11 (GDAD GDC-1:50,000)-

गुजरात, दमन व दीव / Gujarat, Damān & Diu

भूस्थानिक जानकारी केंद्र / Geo-Spatial Data Centre

भारतीय सर्वेक्षण विभाग / Survey of India

PROPOSED 11KV OVERHEAD LINE

AT ZAKHLYA AREA 0.3507 HACTOR

भारत के सर्वेक्षक, स्वर्ण सुब्बा राव, बी०ई०, के निदेशन में प्रकाशित,

Published under the direction of Swarna Subba Rao, B.E., Surveyor General of India,

Survey of India, Hāthībarkala Estate, Post Box No.37, Dehra Dūn-248001 (Uttarākhānd)

Department of Science & Technology, Government of India.

R.K. Sharma

DE, Gir Reserved Forest

PGVCL Gujarat

PRINTED AT THE SOUTHERN PRINTING GROUP OF SURVEY OF INDIA.