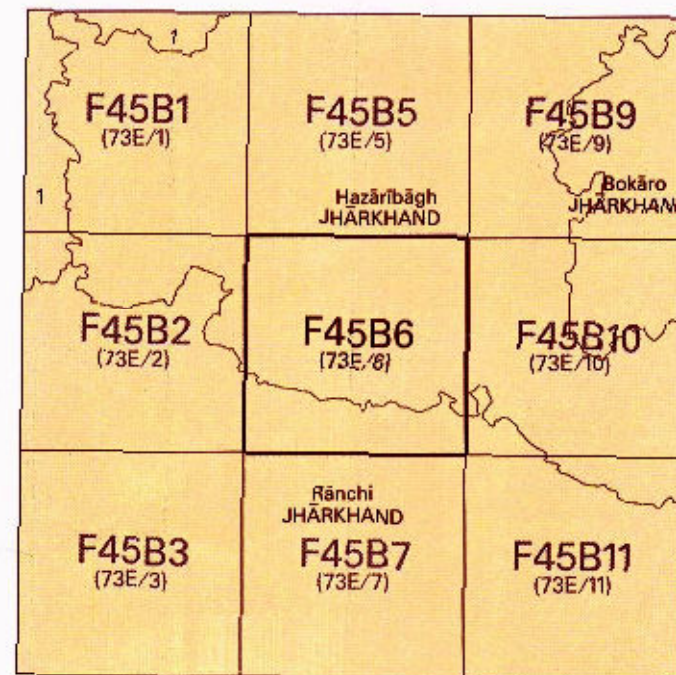




OPEN SERIES  
MAP

No. F45B6

Scale 1:50,000



1 Chattr, JHARKHAND.

भारतीय सर्वेक्षण विभाग SURVEY OF INDIA

1st Edition 2011.

Price: Rs.113/-

CONVENTIONAL SYMBOLS

- Express highway: with toll; with bridge; with distance stone
- Roads, metalled: according to importance
- Roads, double carriageway: according to importance
- Unmetalled road: Cam-track; Pack-track; with pass; Foot-path
- Streets: with track in back; unmetalled; Canal
- Dams: masonry or rock-filled; earthwork; Well
- River: dry with water channel; with island & rocks; Tidal river
- Submerged rocks, Shoal, Swamp, Reeds
- Wells: head; unroofed; Tube-well; Spring; Tanks; perennial; dry
- Embankments: road or rail; tank; Broken ground
- Railways, broad gauge: double; single with station; under construction
- Railways, other gauge: double; single with station; under construction
- Mineral line or quarry: Kilo; Cutting with tunnel
- Contours with sub-features: rocky slopes, City
- Sand features: (Tidal) (Dune) (Mud) (Clay) (Gravel) (Shingle)
- Towns or Villages: inhabited; deserted; Fort
- Huts: permanent; temporary; Tower; Antiquities
- Temple, Chhatra, Church, Mosque, Ghat, Tomb, Graves
- Lighthouse, Lightship, Buoy; lighted; unlighted; Anchorage
- Mine: live on traffic; Grass, Sand
- Palm: palm; other: Plantain, Cactus, Bamboo, Other trees
- Areas: cultivated; wooded; Surveyed tree
- Boundary: international
- State: discontiguous; undemarcated
- District: subdivision; taluk or tehsil; forest
- Boundary pillars: surveyed; unlocated; village junction
- Height: triangulated; station; point; approximate
- Bench-mark: geodetic; tertiary; canal
- Post office, Telegraph office, Overhead line
- Rest house or inspection bungalow; Circle house; Police station
- Camping ground, Forest: reserved; protected
- Spaced names: administrative; locality or tribal
- Hospital, Dispensary, Veterinary Hospital/Dispensary
- Aerodrome: Helipad, Tourist air
- Power line: with pylons surveyed; with poles unsurveyed

REFERENCES  
Chy: Chychny, PWD Public Works Department,  
NH 33 National Highway No. 33.

NOTES

Heights are in metres and above Indian mean sea level.  
Contours are approximate.  
A relative height, h, represents the approximate height, in metres, between the top and bottom of a steep slope.  
The exterior boundaries of areas of reserved or protected forest are shown by green lines.  
The names of rivers, streams, and canals are shown in slant type, e.g., 'S' whereas the names of roads are shown in upright type, e.g., 'S'.  
The district boundary between Hazratnagar and Ranchi Districts has been surveyed as pointed out by the local officials on the ground, but has not been verified by the District authorities of Ranchi District.  
Common boundaries between forests have not been shown for want of information.

COMPILATION INDEX

A. Surveyed during 1978-79. Updated for major details from satellite imagery of 2007 during 2008-09.



Projection - UTM Datum - WGS 84

Magnetic Variation from True North about 1° West in 2005.

1:50,000

500 m to 1 cm  
2 cm to 1 km  
3 Kilometres

For further details about this map, please contact

Director

Jharkhand Geo-Spatial Data Centre

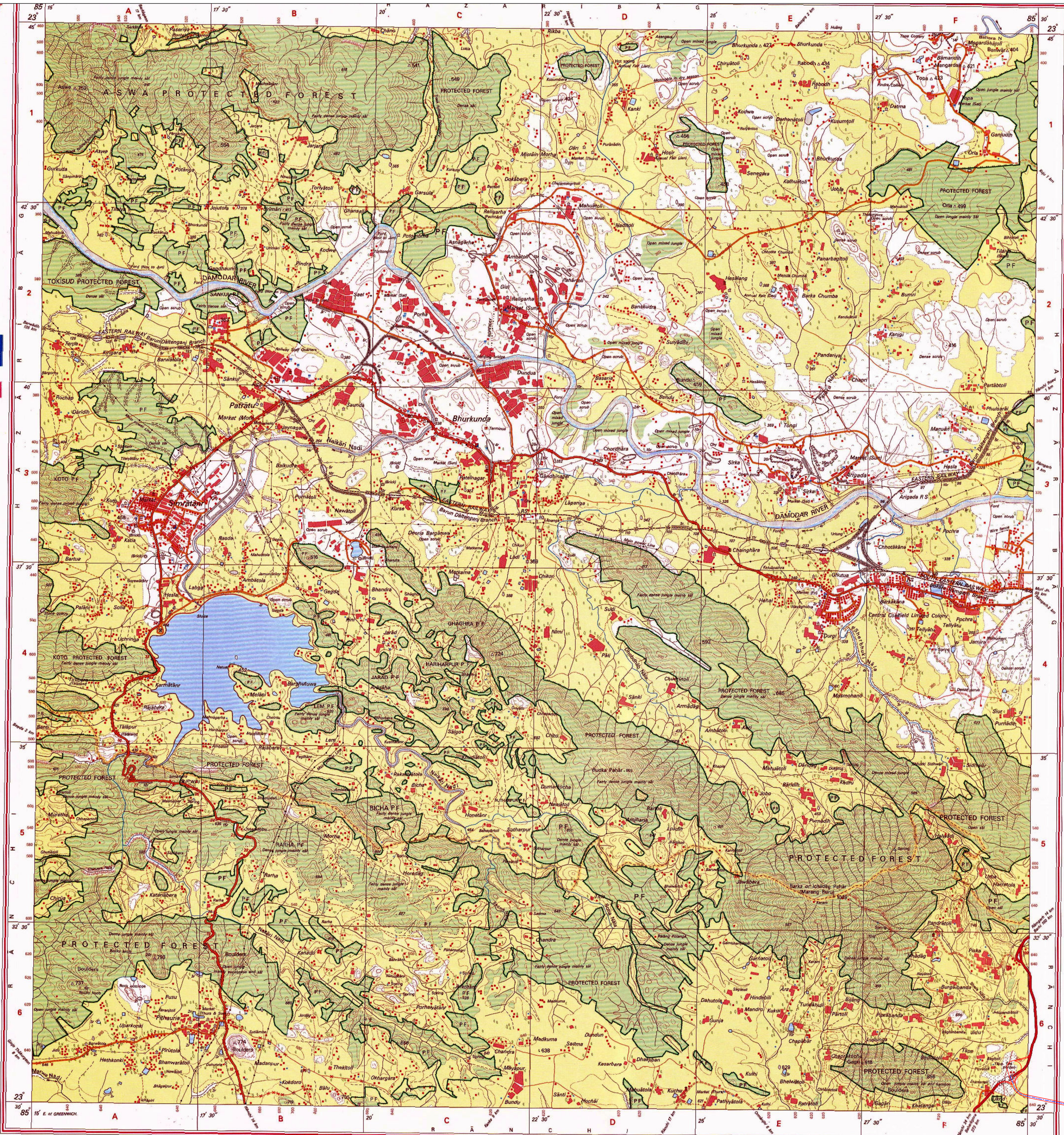
Survey of India, Dhanbad

Ranchi - 834002.

Fax : 0651-242789

WEBSITE - www.surveyofindia.gov.in

Reproduction in whole or part by any means is prohibited without the written permission of Survey of India, the National Mapping Agency.



Division: Ranchi

Name of Project : Division of fresh Forest Land for development of Economic Corridors, Inter Corridors, Feeder Routes etc., under Bharatmala Pariyojana of Jaina More -Gola -Ormanji section in the state of Jharkhand.

Sudhis Kumar

Project Director  
NHAI, PIU  
Dhanbad

REG. No. 0103-SPD-11 (Jharkhand GDC - 1:50,000) - 1015/15.

भारत के नक्शाकार, डॉ. सर्वे सुभाष राय के दिशान्तरण में प्रकाशित।  
Published under the direction of Dr. Swarna Subba Rao, Surveyor General of India.

PRINTED AT THE SOUTHERN PRINTING GROUP OF SURVEY OF INDIA.





निर्वात के लिये नहीं NOT FOR EXPORT

OPEN SERIES  
MAP

No. F45B11

Scale 1:50,000

Hazaribag JHARKHAND F45B6 (73E/6)	F45B10 (73E/10)	Bokaro JHARKHAND F45B14 (73E/14)
F45B7 (73E/7)	F45B11 (73E/11) Ranchi JHARKHAND	F45B15 (73E/15) Purnulia WEST BENGAL
F45B8 (73E/8)	F45B12 (73E/12)	F45B16 (73E/16) Sarakela Kharsawan JHARKHAND

भारतीय सर्वेक्षण विभाग

SURVEY OF INDIA

1st Edition 2010.

Price: Rs. 70/-

#### CONVENTIONAL SYMBOLS

Express highway with toll with bridge with distance stone	
Roads, metalled according to importance	
Roads, double cartway according to importance	
Unmetalled road, cart-track, pack-track with pass, foot-path	
Streams with track in bed, underfoot, chert	
Streams, meandering or rock-filling, part-work, weir	
River, dry with water channel, with island & rocks, tidal river	
Submerged river, shoal, swampy, reeds	
Water, tract, unford, tubewell, spring, tank, perennial, dry	
Settlements: road or rail, tank, broken ground	
Railways, broad gauge, double, single with station, under construction	
Railways, other gauges, double, single with distance stone, do	
Mineral line or railway, line, cutting with tunnel	
Contours with sub-features, rocky slopes, cliffs	
Sand features: (Mud) Sand-hill (Spur), (Dune), (Shifting)	
Towns or Villages: inhabited, unincorporated, (Disputed)	
Notes: permanent, temporary, tower, Antiquities	
Temples, Chattri, Church, Mosque, Ghat, Tomb, Graves	
Lighthouses, Lightships, Buoys, lighted, unlighted, Anchorage	
Mine, Veneer, pits, Grass, Scrub	
Palms, palmry, other, Plants, Cactus, Bamboo, Other trees	
Areas: cultivated, wooded, Surveyed tree	
Boundary: international	
state, demarcated, unincorporated	
district, subdivision, taluk or block, forest	
Boundary pillars: surveyed, unlocated, village, information	
Heights, triangulated, station, point, approximate	
Bench-mark, geodetic, survey, aneroid	
Post office, Telegraph office, Coded, tele. post	
Rail, house or inspection building, Circuit, house, Police station	
Camping ground, Forest, reserved, protected	
Spaced names: administrative, locality or rural	
Hospital, Dispensary, Veterinary, Hospital/Dispensary	
Airplane, Helicopter, Tourist ship	
Power line: with pylons surveyed, with poles unsurveyed	

REFERENCES  
S.E.R. South Eastern Railway. P.W.D. Public Works Department.  
B.O. Block Development Office.

NOTES :-  
Heights are in metres and above Indian mean sea level.  
Contours are in metres.  
The triangulated heights and contours in this sheet have not been adjusted to the heights of the spirit levelled bench-marks and may not be exactly in accordance with them.  
A relative height & represents the approximate height, in metres, between the top and bottom of a steep slope.  
The kilometre stone numbers along roads and railways are shown in slant type, e.g. 'S' whereas milestone numbers are shown in upright type, e.g. '1'.  
Forest boundaries have not been shown for want of reliable information.

COMPILATION INDEX  
A. Surveyed during 1978-79. Updated for major details from satellite imagery of 2007 during 2008-09.

Projection - UTM Datum - WGS 84  
Magnetic Variation from True North about 1° West in 2005.  
(Decreasing by about 1° annually.)  
1:50,000  
2 cm to 1 km  
500 m to 1 km  
CONTOUR INTERVAL 20 METRES

For further details about this map, please contact  
Director  
Jharkhand Geo-Spatial Data Centre  
Survey of India, Dhanbad.  
Ranchi - 834002  
Fax : 0651 - 2482789

WEBSITE - www.surveyofindia.gov.in



*Sudhis Kumar*  
Project Director  
NHAI, PIU  
Dhanbad

Name of Project : Diversion of fresh Forest Land for development of Economic Corridors, Inter Corridors, Feeder Routes etc., under Bharatmala Pariyojana of Jaina More -Gola -Ormanji section in the state of Jharkhand.





Scale 1:50,000

F45B5 (73E/5)	F45B9 (78E/9)	F45B13 (73E/13)
F45B6 (73E/6)	F45B10 (73E/10) Hazaribagh JHARKHAND	F45B14 (73E/14) Bokaro JHARKHAND
F45B7 (73E/7)	F45B11 (73E/11) Ranchi JHARKHAND	F45B15 (73E/15) Purulia WEST BENGAL

1 Girīdīh, JHĀRKHAND.

भारतीय सर्वेक्षण विभाग

SURVEY OF INDIA

1st Edition, 2010

Price: Rs. 70/-

### CONVENTIONAL SYMBOLS

Roads: highway, with toll; with bridge; with distance stone			
Roads, roadside according to importance			
Roads, double (two-lane) according to importance			
Unsettled road: Cart-track, Pack-track with pass, Post-path			
Streams: with track in bed; unfilled; canal			
Dike: masonry or rock-filled; earthen; Wall			
River: dry with water channel; with island & Rocks; Tidal river			
Submerged rocks, Shoal, Swamp, Reeds			
Wells: Rill; unwater; Tule; Spring; Tank; perennial; dry			
Embankments: road or rail; tall; broken ground			
Roadways, broad gauge; double; single with metric; under control			
Roadways, other gauges; double; single with distance stone; do.			
Mineral line or farmway: Kite, Carting with funnel			
Contours with sea-fathens: Rocky slopes, Cliffs			
Sand features: (Wind) Sand-Hills (Dune), (Kübel) Sandhills			
Towns & Villages: inhabited; deserted; Fort			
Nitt: permanent; temporary, Tent, Ambulance			
Temples: Church, Church, Mosque, Igloo, Tent, Graves			
Lighthouse, Lighthouse, Boats: lighted; unlighted; Anchorage			
Mine: Mine or zolla; Grass, Sloop			
Mine: Mine or zolla; Grass, Sloop			
Mine: Mine or zolla; Grass, Sloop			
Areas: cultivated; wooded; Surveined tree			
Boundary, international			
district: designated; undesignated			
district: individual; local or (Silbo) forest			
Boundary points: surveyed; unlocated; Village situation			
Height, integrated: station; point; approximate			
Benck-metric: geodetic; tectonic; can.			
Post: Office, Telegraph office, Overhead canal			
Rail: horse or traction; inspection; Circuit, House, Police station			
Camping ground, Forest: reserved; protected			
Spacial names: administrative; locally or tribal			
Hospital, Dispensary, Veterinary; Hospital / Dispensary			
Altitude, Height, Tourist site			
Power line: with pylons surveyed; with poles unsurveyed			

## REFERENCES

NH 33 National Highway No. 33.  
SER South Eastern Railway.

NOTES :-

Heights are in metres and above Indian mean sea level.  
Contours are approximate.  
A relative height „*sr.*“ represents the approximate height, in metres, between the top and bottom of a steep slope.  
The triangulated heights and contours in this sheet have not been adjusted to the heights of the spirit level bench - marks and may not be strictly in accordance with them.  
The kilometre scale numbers along roads are shown in slant type, e.g., 5, whereas milestone number are shown in upright type, e.g., 5.  
Forest boundaries near the Diamor River have not been shown for want of reliable information.  
*Sr. boundaries*, *bene-hier*

COMPILATION INDEX

A. Surveyed during 1975–78. Updated for major details from satellite imagery of 2007 during 2008–09.

A

Projection - UTM Datum - WGS 84

Magnetic Variation from True North about  $\frac{1}{4}^{\circ}$  West in  
(Decreases by about  $3'$  annually)

1:50,000

CONTOUR INTERVAL 10 METRES

For further details about this map, please contact

Director

Jharkhand Geo-Spatial Data Centre  
Survey of India, Durgam

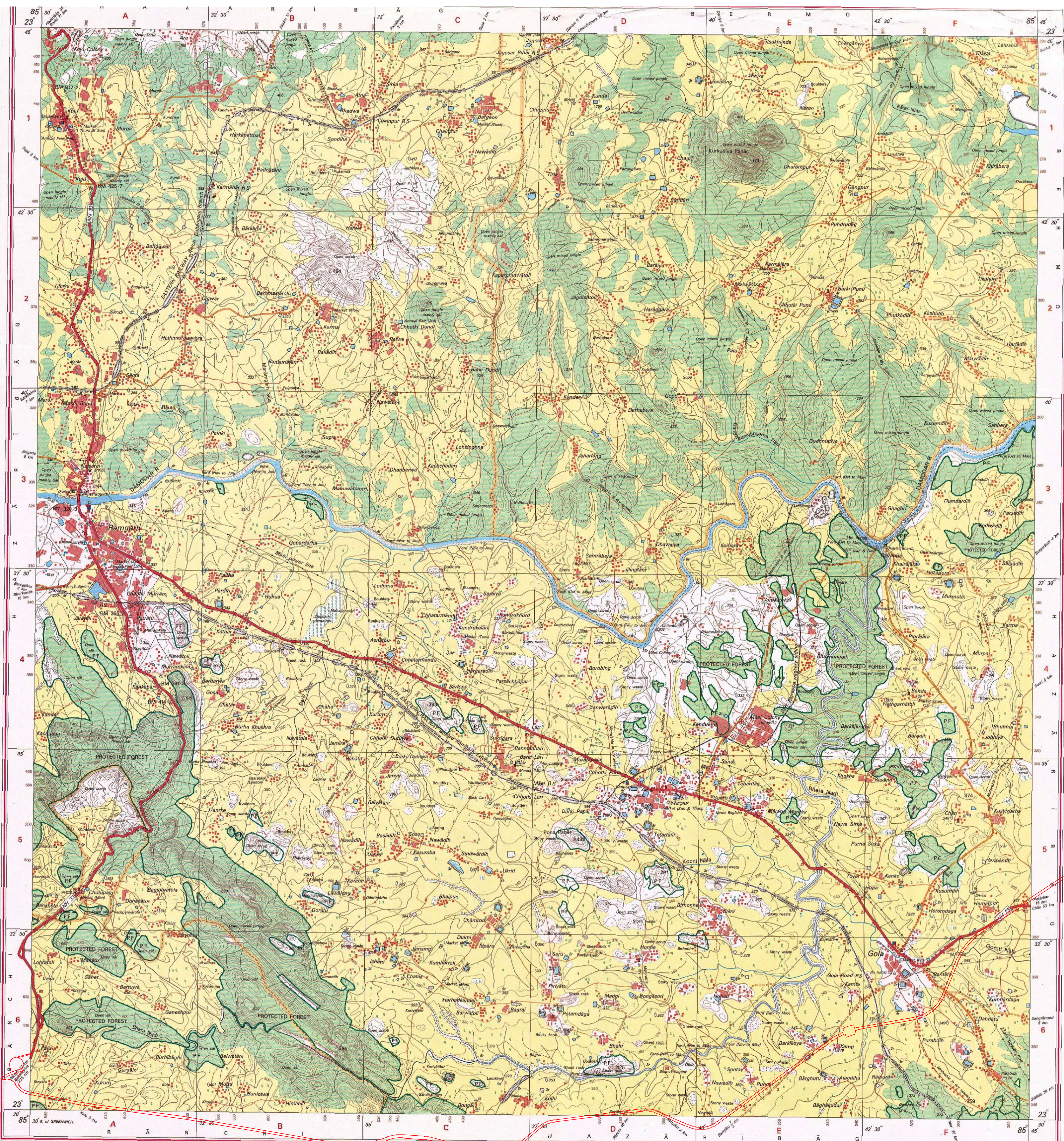
Rānchi - 834002.

Fax : 0651 - 2482789

WEBSITE – [www.surveynfindia.gov.in](http://www.surveynfindia.gov.in)


in whole or part by any means.

Reproduction in whole or part by any means is prohibited  
without the written permission of Survey of India, the  
National Mapping Agency.



REG. No. 9(44-REG-D'10 (Backhand GDC-1-50,000)-1015 '11

भारत के महासर्वोदय विद्या मन्त्रालय की ओर से निर्देश में प्रकाशित



**Name of Project :** Diversion of fresh Forest Land for development of Economic Corridors, Inter Corridors, Feeder Routes etc., under Bharatmala Pariyojana of Jaina More-Gola -Ormanjhi section in the state of Jharkhand.

Sudhir Kumar

**Project Director**  
**NHAI, PIU**  
**Dhanbad**