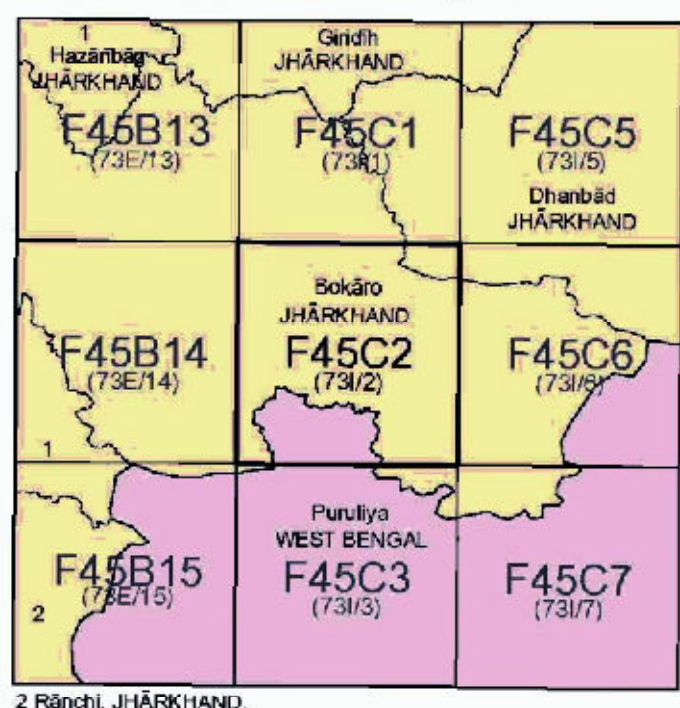




Scale 1:50,000



भारतीय सर्वेक्षण विभाग SURVEY OF INDIA

1st Edition 2011.

Price: Rs. 70/-

CONVENTIONAL SYMBOLS



REFERENCE

REFERENCE
NH.32 National Highway No. 32

NOTES :-

As well as the numerous throughout the sheet, only the important ones have been shown. The administrative boundaries in this sheet have been surveyed and pointed out by the local officials on the ground but have not been verified by the authorities concerned.

COMPILATION INDEX

A. Q: replied from 1:25,000 survey, 1961-62. Isolated for male.

Projection - UTM Datum - WGS 84

Magnetic Variation from True North about $\frac{1}{2}^{\circ}$ West in 2005.

1:50,000 2 cm to

0 1 2 3 (meters)

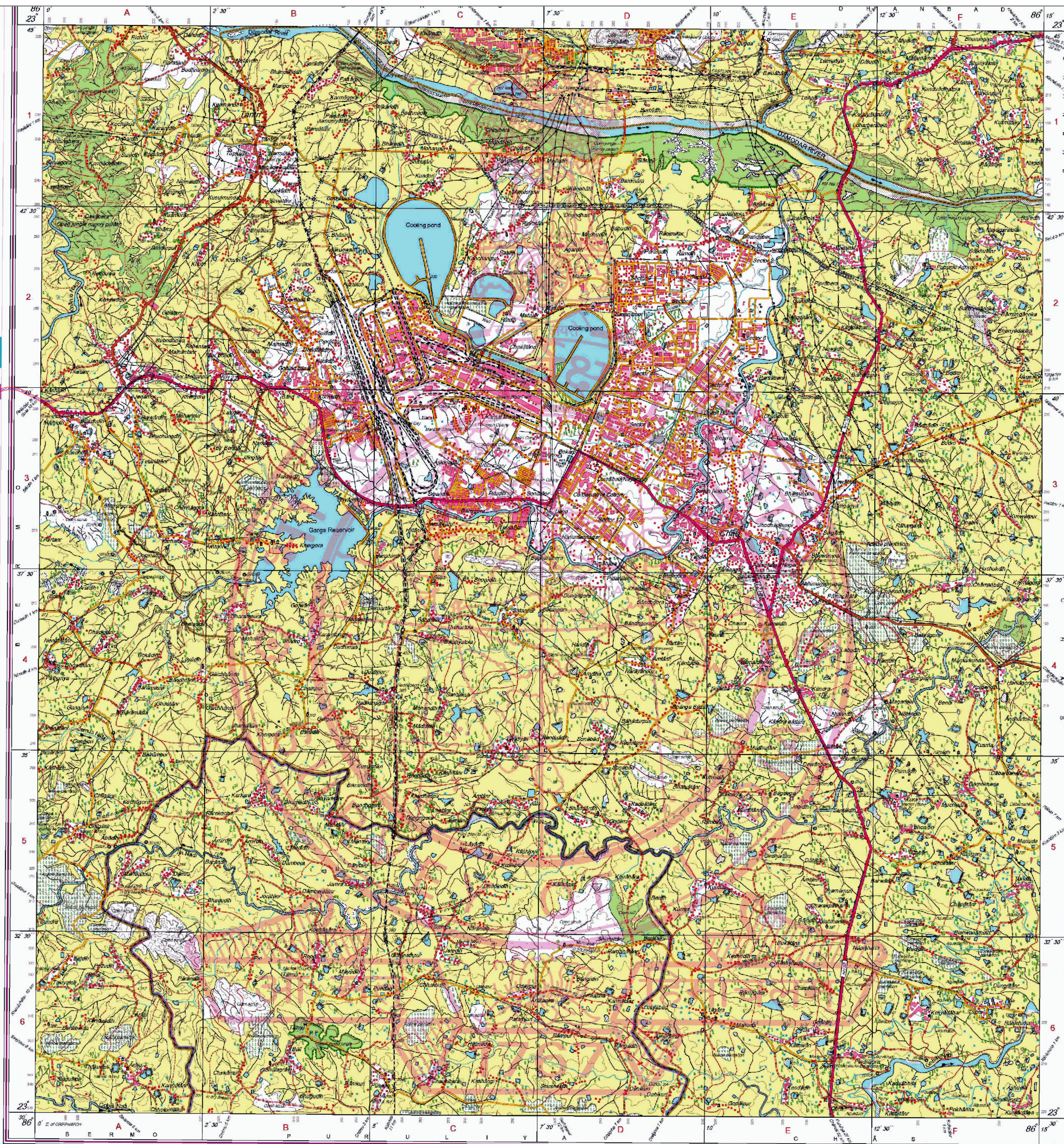
CONTOUR INTERVAL: 300000000

For further details about this map, please contact:

Director
WB & Sikkim Geo-Spatial Data Centre
Survey of India, 13, Wood Street
Kolkata.

WEBSITE - www.surveyofindia.gov.in

Reproduction in whole or part by any means is prohibited
without the written permission of Survey of India, the
National Mapping Agency



Division: Bokaro

Name of Project : Diversion of fresh Forest Land for development of Economic Corridors, Inter Corridors, Feeder Routes etc., under Bharatmala Pariyojana of Jaina More-Gola -Ormanjhi section in the state of Jharkhand.

Sudhir Kumar
Project Director
NHAI, PIU
Dhanbad

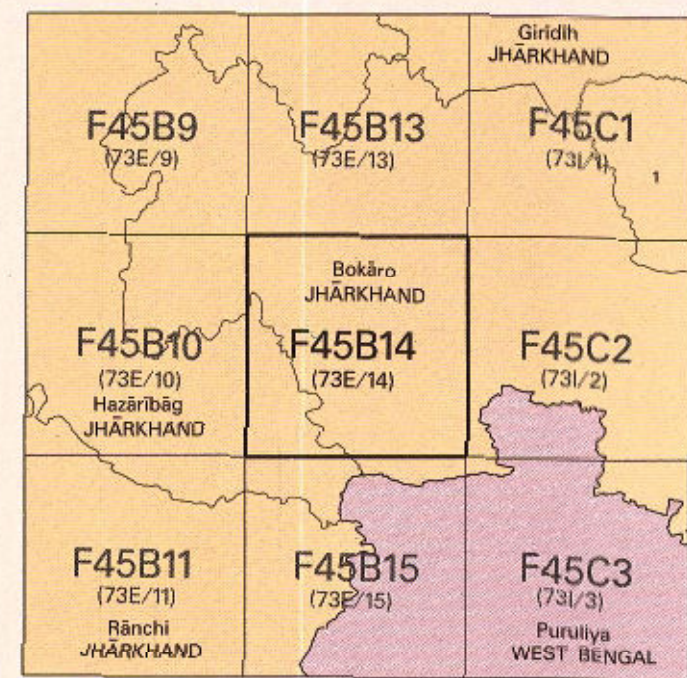


निर्यात के लिए नहीं NOT FOR EXPORT

OPEN SERIES
MAP

No. F45B14

Scale 1:50,000

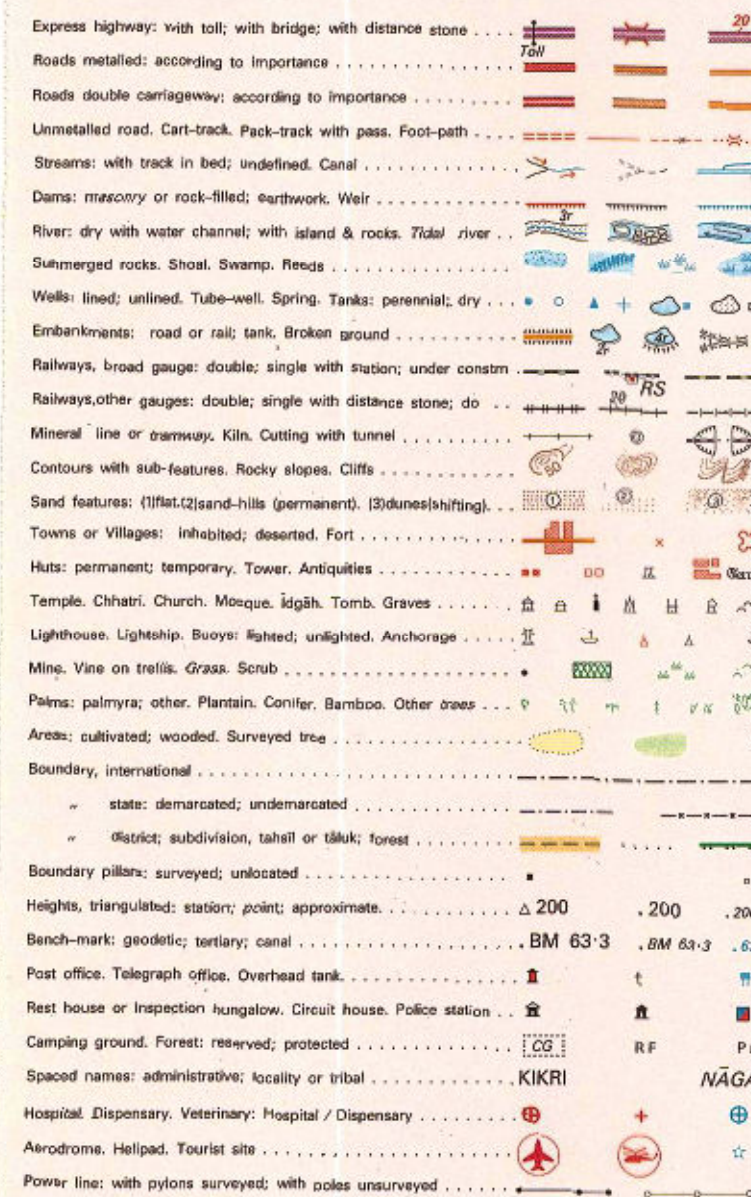


भारतीय सर्वेक्षण विभाग SURVEY OF INDIA

1st Edition 2009.

Price : Rs. 50/-

CONVENTIONAL SYMBOLS



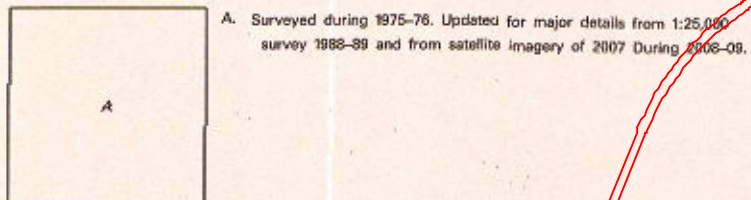
REFERENCES

NP 23 National Highway No. 23. SER South Eastern Railway.
CMBK Chandi Muli Bank Kina.

NOTES

Heights are in metres and above Indian maps see level.
Contours are approximate.
A relative height, e.g., represents the approximate height, in metres, between the top and bottom of a steep slope.
Tanks, shown dry, in this area usually contain water from July to December.
The kilometre stone numbers along roads are shown in slant type, e.g., 5' whereas milestone numbers are shown in upright type, e.g., 5.
Cultivation is periodic and dependent on rainfall.
Unsettled road along the canal embankment is shown by cart-track symbol.
All unmetalled roads are not suitable in dry season.
A relative height, e.g., 5', marked along a canal, indicates the height of the top of the canal embankment above the adjacent country.

COMPILED INDEX



Projection - UTM Datum - WGS 84

Magnetic Variation from True North about 2° West in 2005.
(Decreasing by about 1' annually)

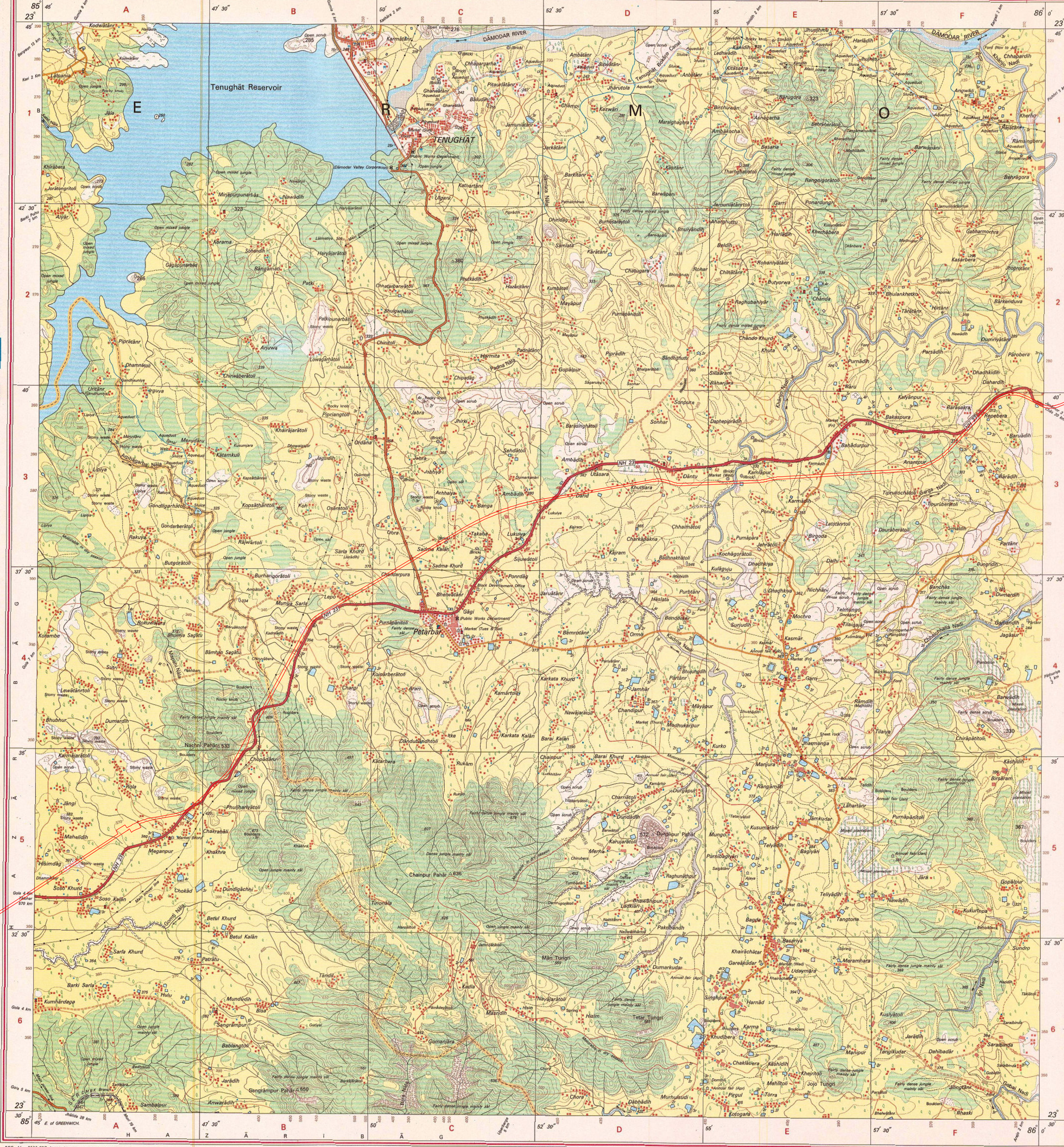
Scale 1:50,000

For further details about this map, please contact

Director
Jharkhand Geo-Spatial Data Centre
Survey of India, Dhanbad
Ranchi - 834002
Fax : 0651 - 2482788

WEBSITE - www.surveyofindia.gov.in

Reproduction in whole or part by any means is prohibited without the written permission of Survey of India, the



Division: Bokaro

Name of Project : Diversion of fresh Forest Land for development of Economic Corridors, Inter Corridors, Feeder Routes etc., under Bharatmala Pariyojana of Jaina More -Gola -Ormanji section in the state of Jharkhand.

Sudhir Kumar

Project Director
NHAI, PIU
Dhanbad