

# Geo-reff. Map-1

Sub : Diversion of 5.95744 ha. of road side forest land for laying of underground drinking water supply pipeline parallel to road. Prachi Group Water Supply Scheme for supply of drinking water to 77 villages and 1 town of Talala, Veraval and Sutrapada tehsil, Gir Somnath & Junagadh District, Gujarat State .(FP/GJ/WATER/45277/2020)

No.-1- Tapping Point Prasil to Prachi hw Area:0.3 Ha.

## Legend

- A** 20°54'37.81"N 70°38'4.62"E
- B** 20°55'13.51"N 70°36'28.20"E



Google Earth

Image © 2021 Maxar Technologies



## Geo-reff. Map-2

Sub : Diversion of 5.95744 ha. of road side forest land for laying of underground drinking water supply pipeline parallel to road. Prachi Group Water Supply Scheme for supply of drinking water to 77 villages and 1 town of Talala, Veraval and Sutrapada tehsil, Gir Somnath & Junagadh District, Gujarat State .(FP/GJ/WATER/45277/2020)

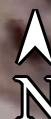
No.-2- Tapping Point to Rampara hw Area:0.00444 Ha.

### Legend

- B 20°54'39.18"N 70°38'3.37"E
- A 70°38'3.37"E 70°38'4.20"E

Google Earth

Image © 2021 Maxar Technologies



100 ft



## Geo-reff. Map-3

Sub : Diversion of 5.95744 ha. of road side forest land for laying of underground drinking water supply pipeline parallel to road. Prachi Group Water Supply Scheme for supply of drinking water to 77 villages and 1 town of Talala, Veraval and Sutrapada tehsil, Gir Somnath & Junagadh District, Gujarat State .(FP/GJ/WATER/45277/2020)

No.-3- Tapping Point to Bhetail hw Area:0.370 Ha.

### Legend

- A 20°54'37.04"N 70°38'4.84"E
- B 20°55'22.69"N 70°36'7.09"E





## Geo-reff. Map-4

Sub : Diversion of 5.95744 ha. of road side forest land for laying of underground drinking water supply pipeline parallel to road. Prachi Group Water Supply Scheme for supply of drinking water to 77 villages and 1 town of Talala, Veraval and Sutrapada tehsil, Gir Somnath & Junagadh District, Gujarat State .(FP/GJ/WATER/45277/2020)

No.-4- Ratidhar to Bhimdeval Area:0.155 Ha.

### Legend

- A 20°57'48.80"N 70°36'22.77"E
- B 20°58'31.10"N 70°36'49.37"E

Anida અનિદા

B Ending Point

A Starting Point

Google Earth

Image © 2021 Maxar Technologies

2000 ft





## Geo-reff. Map-5

Sub : Diversion of 5.95744 ha. of road side forest land for laying of underground drinking water supply pipeline parallel to road. Prachi Group Water Supply Scheme for supply of drinking water to 77 villages and 1 town of Talala, Veraval and Sutrapada tehsil, Gir Somnath & Junagadh District, Gujarat State .(FP/GJ/WATER/45277/2020)

No.- 5 - Rampara hw to Jashadhar hw Area:0.1958 Ha.

### Legend

- A** 20°58'31.37"N 70°36'49.37"E
- B** 20°59'28.66"N 70°36'24.80"E

Jasadhar  
Ending Point

Starting Point

Google Earth

Image © 2021 Maxar Technologies

4000 ft







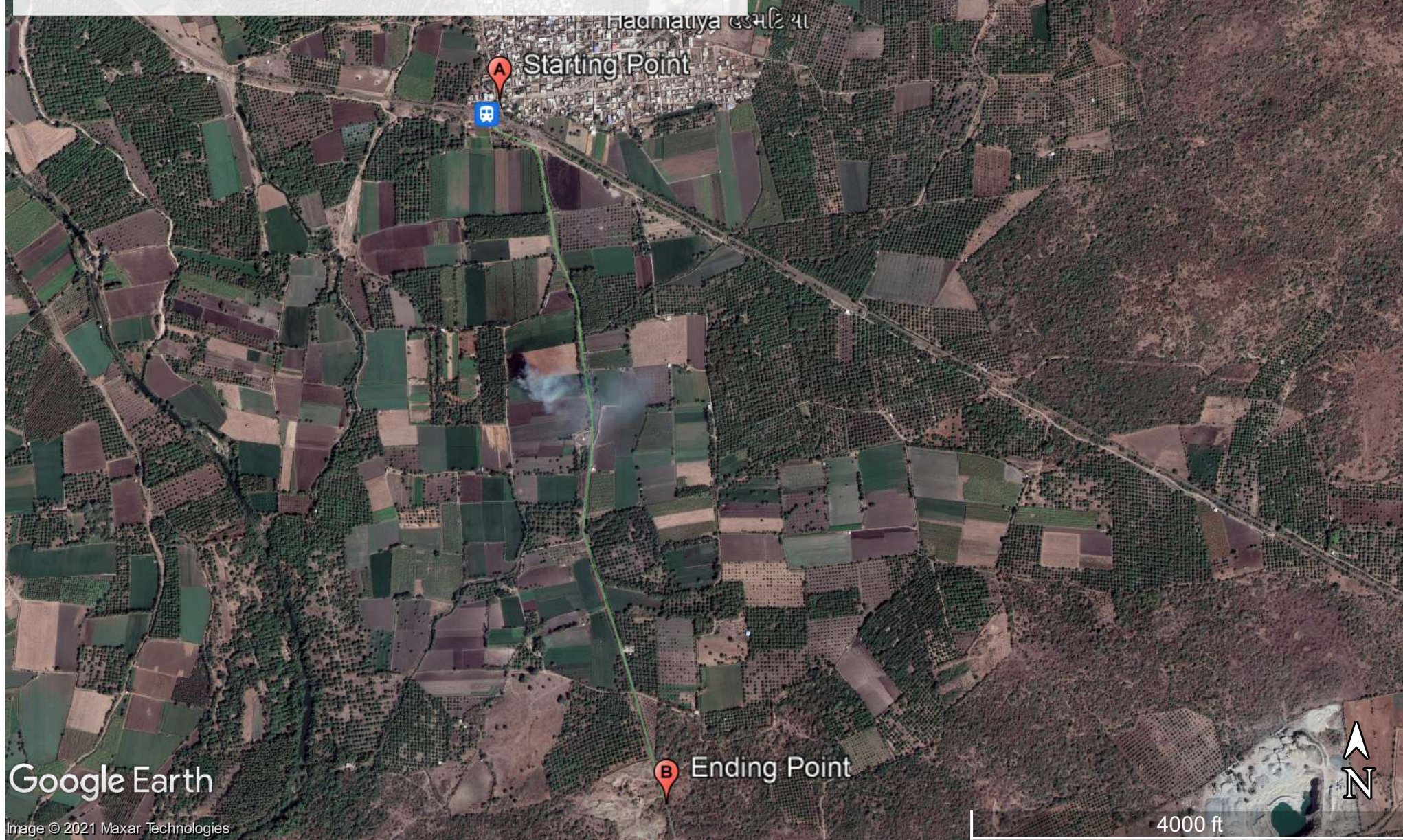
## Geo-reff. Map-6

Sub : Diversion of 5.95744 ha. of road side forest land for laying of underground drinking water supply pipeline parallel to road. Prachi Group Water Supply Scheme for supply of drinking water to 77 villages and 1 town of Talala, Veraval and Sutrapada tehsil, Gir Somnath & Junagadh District, Gujarat State .(FP/GJ/WATER/45277/2020)

No.- 6 - Rampara hw to Hadmatiya Area:0.2096 Ha.

### Legend

-  20°59'13.00"N 70°38'25.65"E
-  21° 0'16.82"N 70°38'9.17"E





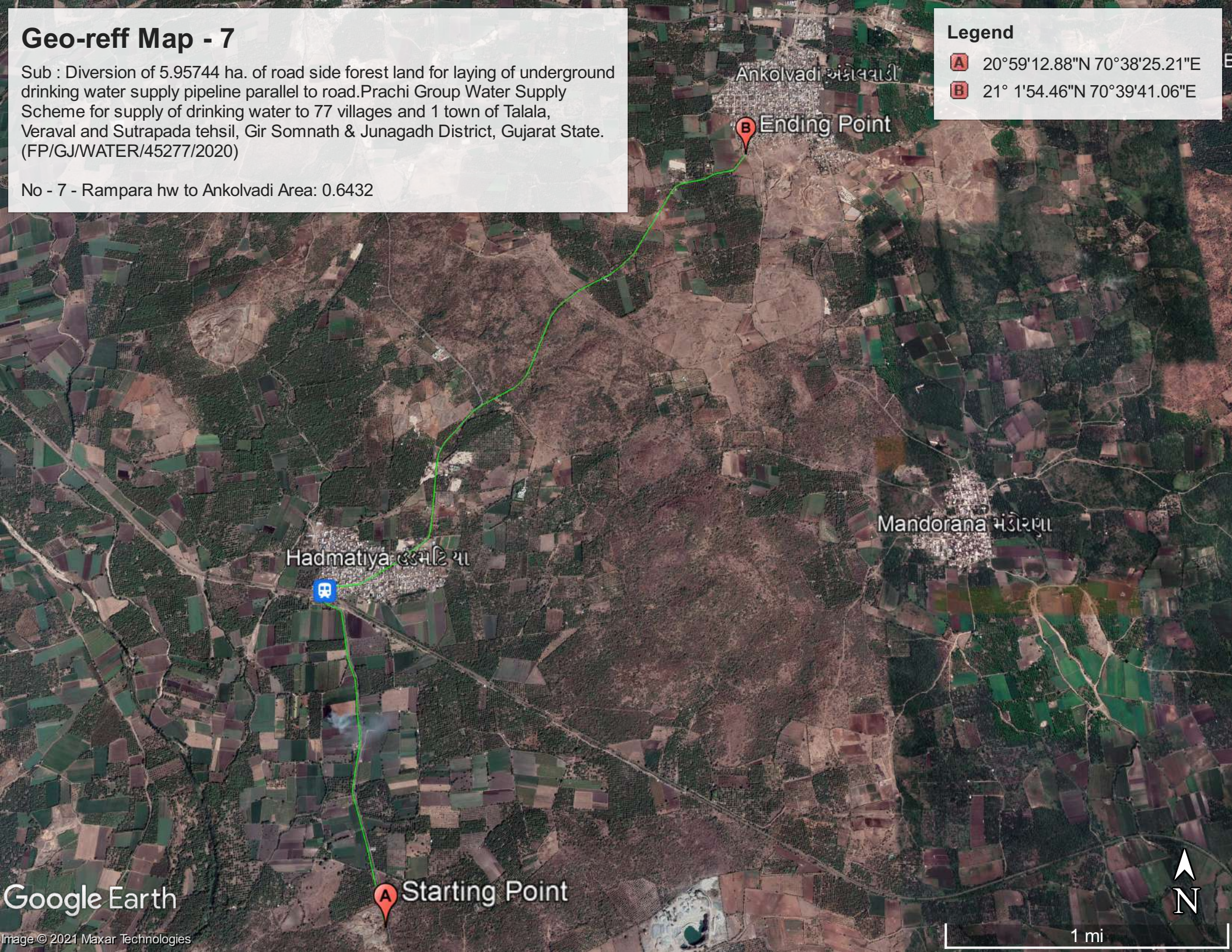
## Geo-reff Map - 7

Sub : Diversion of 5.95744 ha. of road side forest land for laying of underground drinking water supply pipeline parallel to road.Prachi Group Water Supply Scheme for supply of drinking water to 77 villages and 1 town of Talala, Veraval and Sutrapada tehsil, Gir Somnath & Junagadh District, Gujarat State. (FP/GJ/WATER/45277/2020)

No - 7 - Rampara hw to Ankolvadi Area: 0.6432

### Legend

- A** 20°59'12.88"N 70°38'25.21"E
- B** 21° 1'54.46"N 70°39'41.06"E





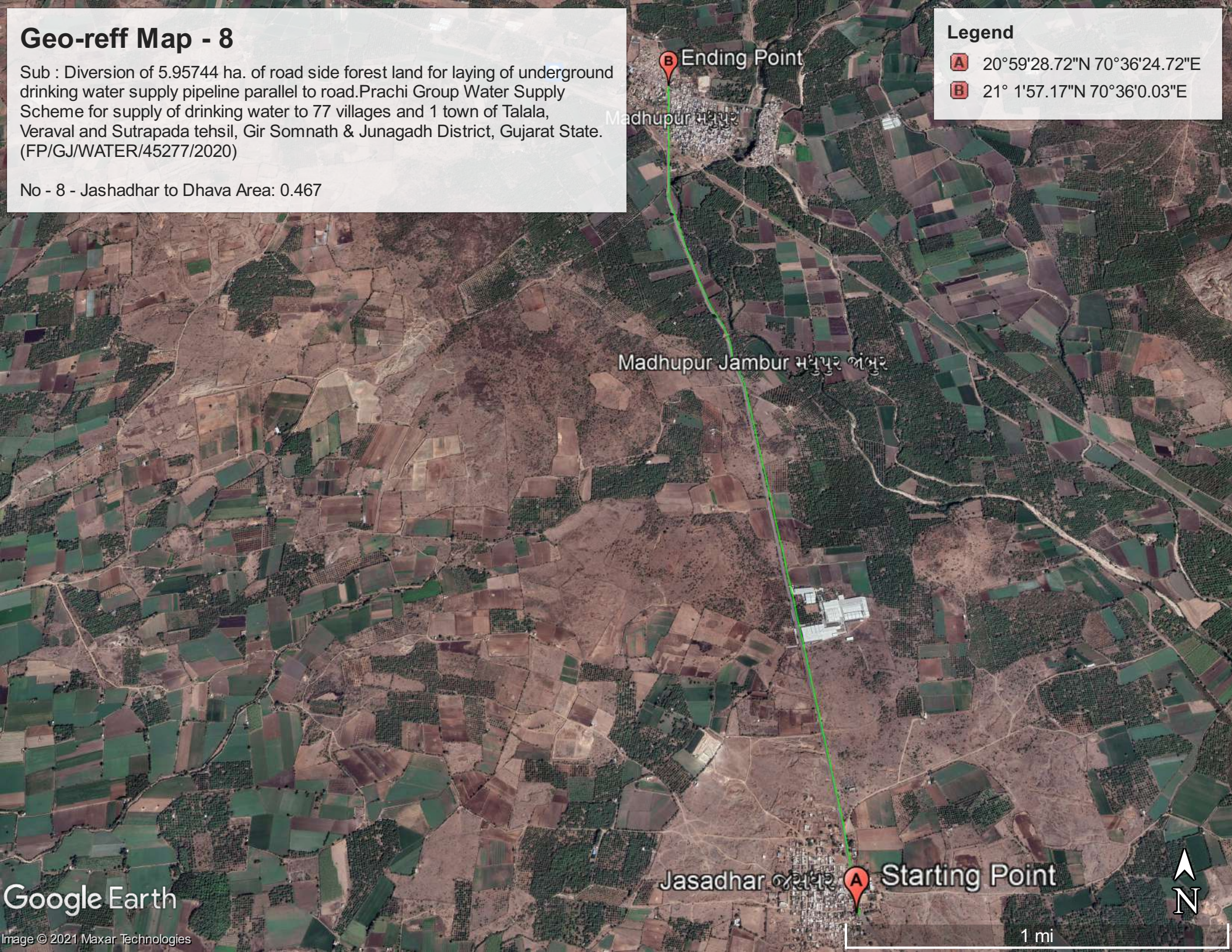
## Geo-reff Map - 8

Sub : Diversion of 5.95744 ha. of road side forest land for laying of underground drinking water supply pipeline parallel to road.Prachi Group Water Supply Scheme for supply of drinking water to 77 villages and 1 town of Talala, Veraval and Sutrapada tehsil, Gir Somnath & Junagadh District, Gujarat State. (FP/GJ/WATER/45277/2020)

No - 8 - Jashadhar to Dhava Area: 0.467

### Legend

- A 20°59'28.72"N 70°36'24.72"E
- B 21° 1'57.17"N 70°36'0.03"E





# Geo-reff Map - 9

Sub : Diversion of 5.95744 ha. of road side forest land for laying of underground drinking water supply pipeline parallel to road.Prachi Group Water Supply Scheme for supply of drinking water to 77 villages and 1 town of Talala, Veraval and Sutrapada tehsil, Gir Somnath & Junagadh District, Gujarat State. (FP/GJ/WATER/45277/2020)

No - 9 - Ankovadi to Surva Area: 0.4027 ha.

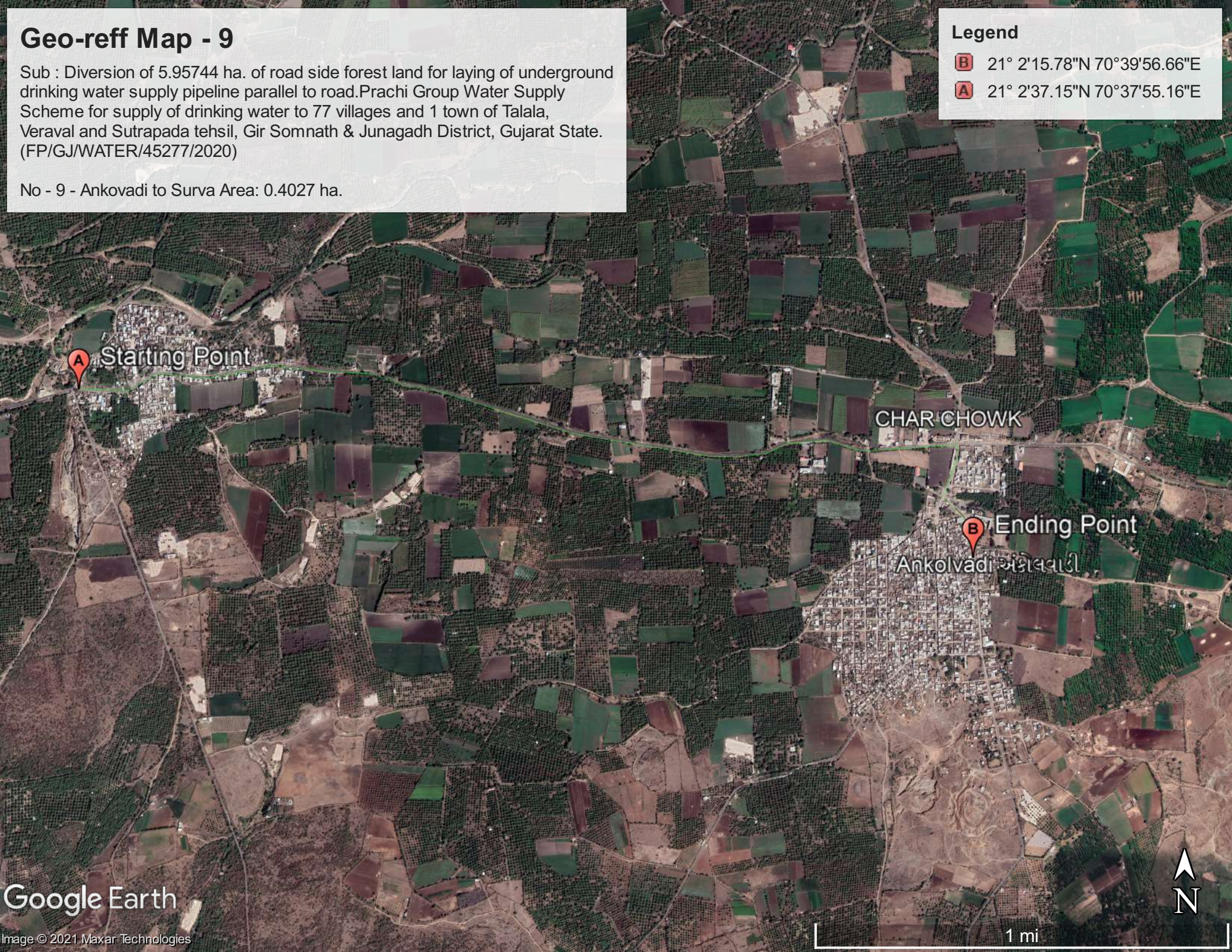
Legend

B

21° 2'15.78"N 70°39'56.66"E

A

21° 2'37.15"N 70°37'55.16"E





# Geo-reff Map - 10

Sub : Diversion of 5.95744 ha. of road side forest land for laying of underground drinking water supply pipeline parallel to road.Prachi Group Water Supply Scheme for supply of drinking water to 77 villages and 1 town of Talala, Veraval and Sutrapada tehsil, Gir Somnath & Junagadh District, Gujarat State. (FP/GJ/WATER/45277/2020)

No - 10 - Jashadhar hw to Anida Area: 0.1222 ha.

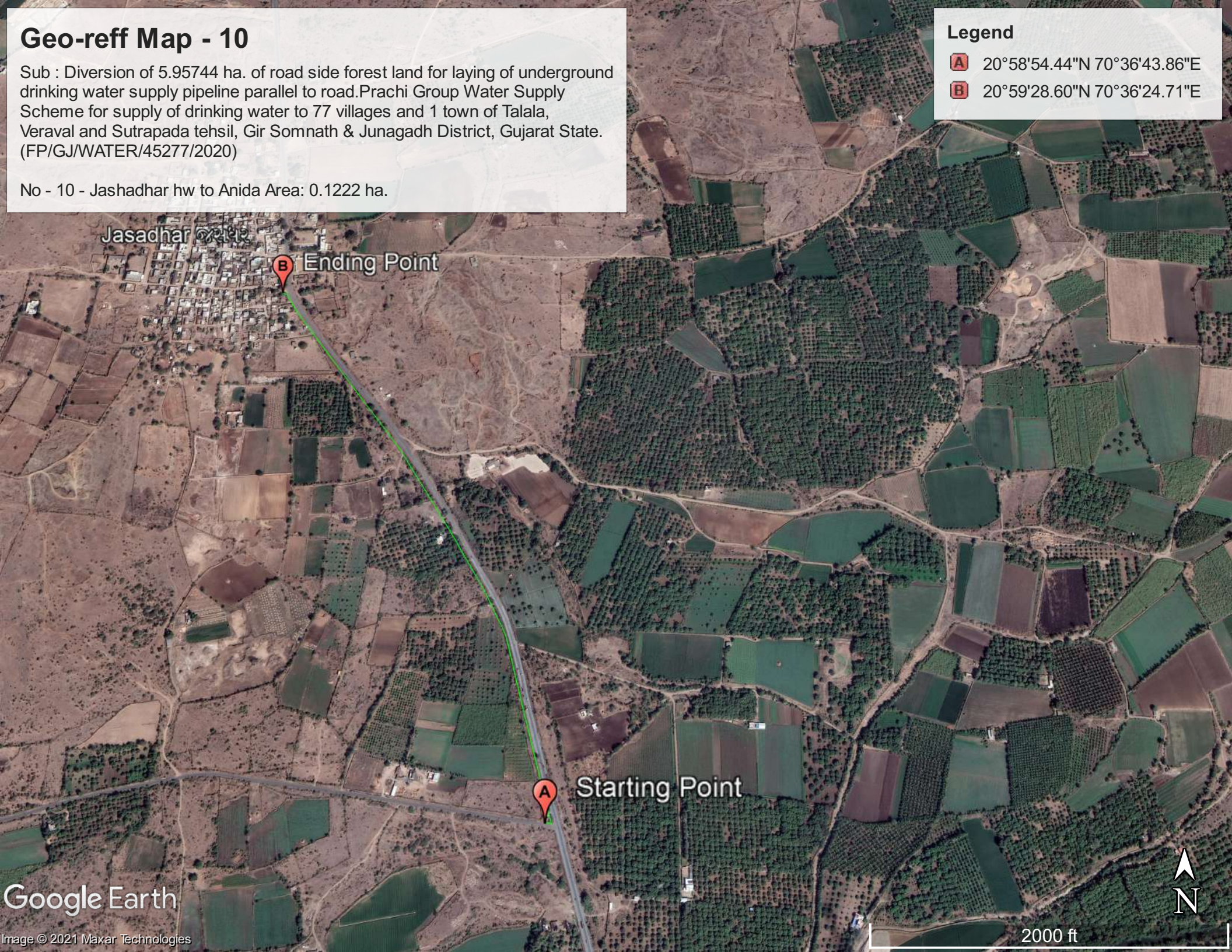
Legend

A

20°58'54.44"N 70°36'43.86"E

B

20°59'28.60"N 70°36'24.71"E





# Geo-reff Map - 11

Sub : Diversion of 5.95744 ha. of road side forest land for laying of underground drinking water supply pipeline parallel to road.Prachi Group Water Supply Scheme for supply of drinking water to 77 villages and 1 town of Talala, Veraval and Sutrapada tehsil, Gir Somnath & Junagadh District, Gujarat State. (FP/GJ/WATER/45277/2020)

No - 11 - jashadhar hw to Madhupur Area: 0.52356 ha.

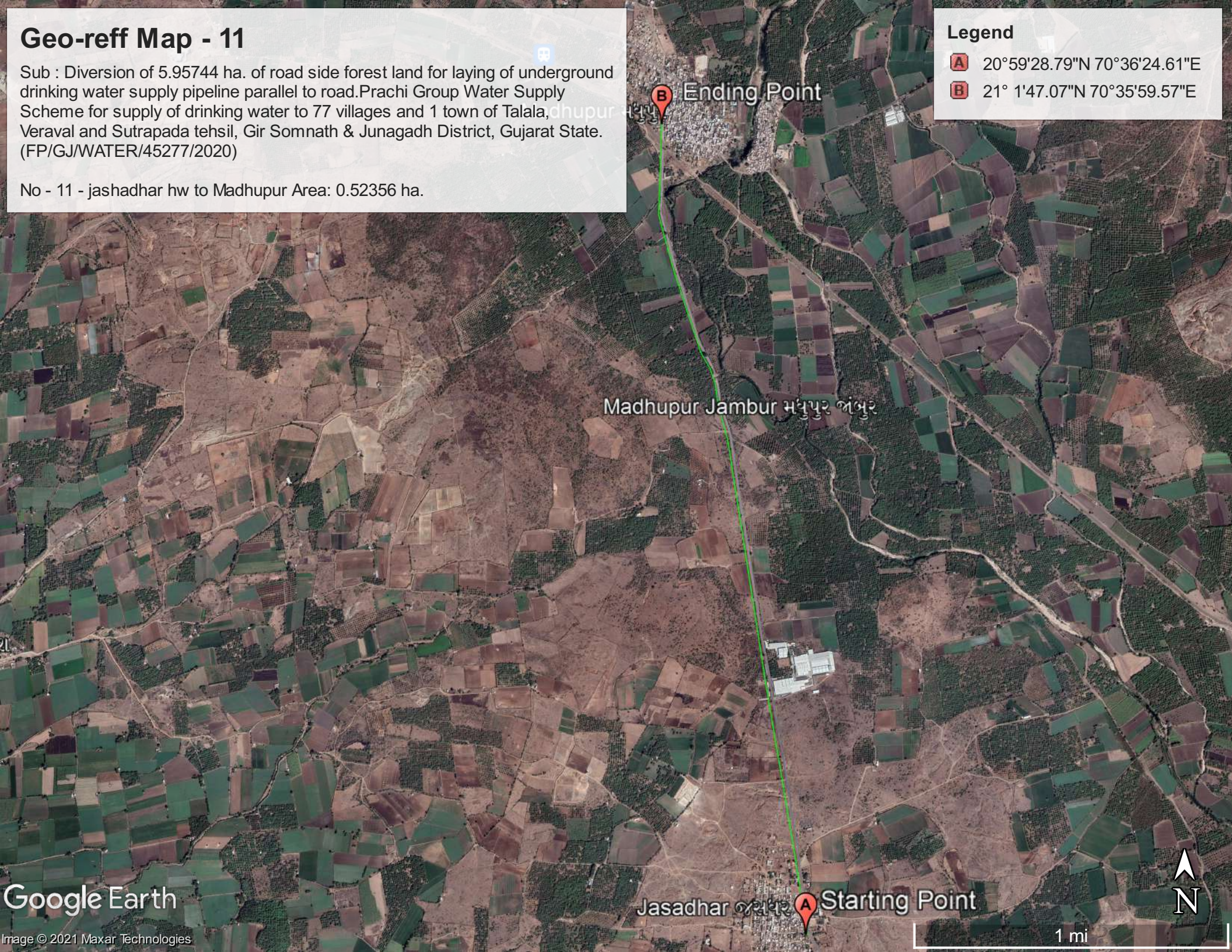
Legend

A

20°59'28.79"N 70°36'24.61"E

B

21° 1'47.07"N 70°35'59.57"E





## Geo-reff Map - 12

Sub : Diversion of 5.95744 ha. of road side forest land for laying of underground drinking water supply pipeline parallel to road.Prachi Group Water Supply Scheme for supply of drinking water to 77 villages and 1 town of Talala, Veraval and Sutrapada tehsil, Gir Somnath & Junagadh District, Gujarat State. (FP/GJ/WATER/45277/2020)

No - 12 - Madhupur to Gundaran Area: 0.55704 ha.

Legend

A

21° 1'47.26"N 70°35'59.63"E

B

21° 2'57.71"N 70°33'46.89"E

24. Madhupur to Gundaran








## Geo-reff Map - 13

Sub : Diversion of 5.95744 ha. of road side forest land for laying of underground drinking water supply pipeline parallel to road.Prachi Group Water Supply Scheme for supply of drinking water to 77 villages and 1 town of Talala, Veraval and Sutrapada tehsil, Gir Somnath & Junagadh District, Gujarat State. (FP/GJ/WATER/45277/2020)

No - 13 - Piplva to Dhramanva(Canal Crossing) Area: 0.0024 ha.

### Legend

-  21° 1'17.23"N 70°31'32.99"E
-  21° 1'26.73"N 70°31'38.79"E
-  Untitled Path






# Geo-reff Map - 14

Sub : Diversion of 5.95744 ha. of road side forest land for laying of underground drinking water supply pipeline parallel to road.Prachi Group Water Supply Scheme for supply of drinking water to 77 villages and 1 town of Talala, Veraval and Sutrapada tehsil, Gir Somnath & Junagadh District, Gujarat State. (FP/GJ/WATER/45277/2020)

No - 14 - Gundran to Talala Area: 0.3516 ha.

## Legend

- B** 21° 2'57.76"N 70°33'47.27"E
- A** 21° 3'28.29"N 70°32'0.08"E
-  30. Gundran to Talala





## Geo-reff Map - 15

Sub : Diversion of 5.95744 ha. of road side forest land for laying of underground drinking water supply pipeline parallel to road.Prachi Group Water Supply Scheme for supply of drinking water to 77 villages and 1 town of Talala, Veraval and Sutrapada tehsil, Gir Somnath & Junagadh District, Gujarat State. (FP/GJ/WATER/45277/2020)

No - 15 - Talala to Galiyavad(Canal Crossing) Area: 0.0015 ha.

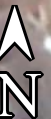
### Legend



21° 3'28.47"N 70°31'49.43"E



Feature 1





# Geo-reff Map - 16

Sub : Diversion of 5.95744 ha. of road side forest land for laying of underground drinking water supply pipeline parallel to road.Prachi Group Water Supply Scheme for supply of drinking water to 77 villages and 1 town of Talala, Veraval and Sutrapada tehsil, Gir Somnath & Junagadh District, Gujarat State. (FP/GJ/WATER/45277/2020)

No - 16 - Bhetali to Khandheri Area: 0.1649 ha.


Legend

A

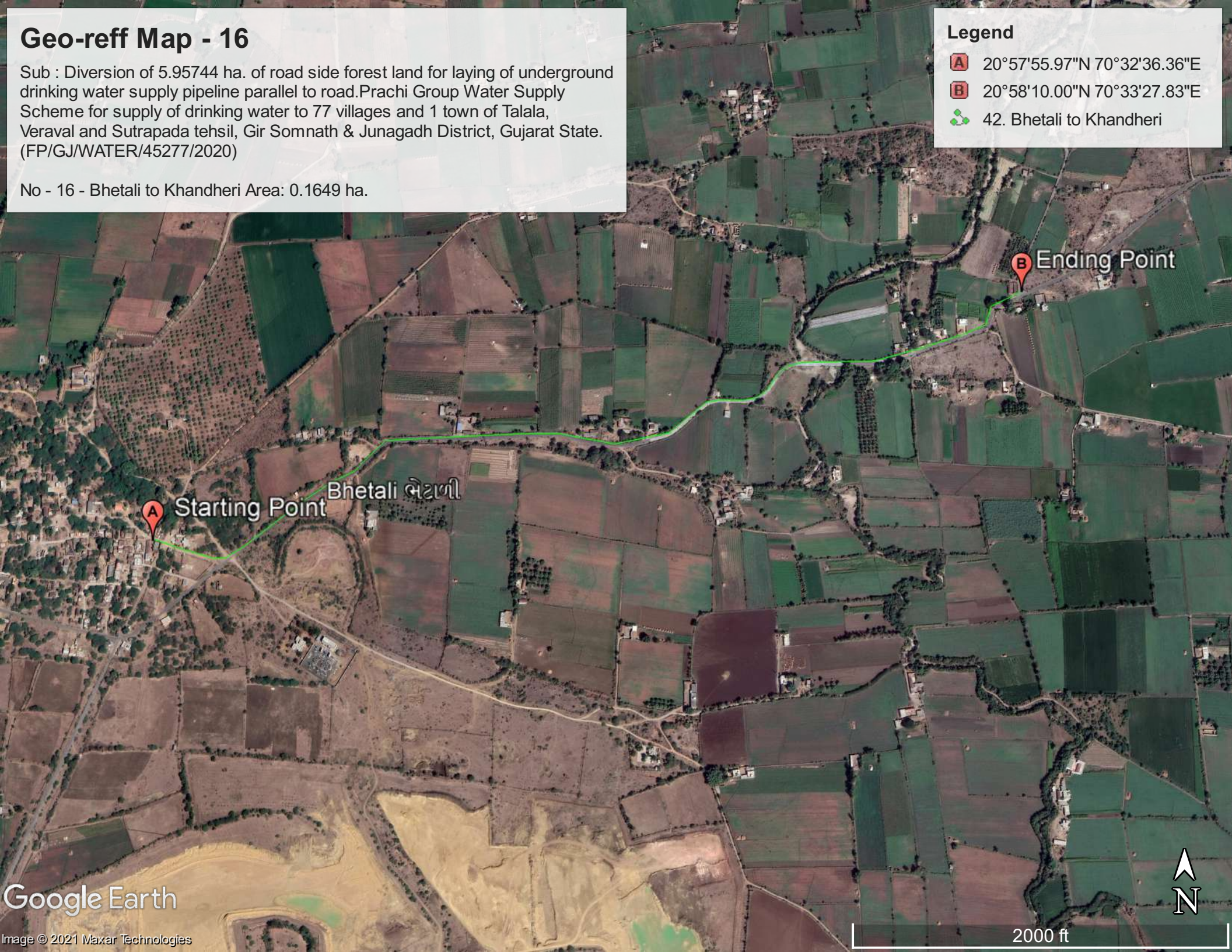
20°57'55.97"N 70°32'36.36"E

B

20°58'10.00"N 70°33'27.83"E



42. Bhetali to Khandheri



2000 ft



## Geo-reff Map - 17

Sub : Diversion of 5.95744 ha. of road side forest land for laying of underground drinking water supply pipeline parallel to road. Prachi Group Water Supply Scheme for supply of drinking water to 77 villages and 1 town of Talala, Veraval and Sutrapada tehsil, Gir Somnath & Junagadh District, Gujarat State. (FP/GJ/WATER/45277/2020)

No - 17 - Bhetali to Lumbha Area: 0.2599 ha.


Legend

B

20°57'56.16"N 70°32'36.46"E

A

20°58'39.95"N 70°33'34.77"E



43. Bhetali to Lumbha








## Geo-reff Map - 18

Sub : Diversion of 5.95744 ha. of road side forest land for laying of underground drinking water supply pipeline parallel to road. Prachi Group Water Supply Scheme for supply of drinking water to 77 villages and 1 town of Talala, Veraval and Sutrapada tehsil, Gir Somnath & Junagadh District, Gujarat State. (FP/GJ/WATER/45277/2020)

No - 18 - Lumbha to Mathasuriya Area: 0.4092 ha.

### Legend

-  20°57'56.16"N 70°32'36.46"E
-  20°58'39.95"N 70°33'34.77"E
-  43. Bhetali to Lumbha








## Geo-reff Map - 19

Sub : Diversion of 5.95744 ha. of road side forest land for laying of underground drinking water supply pipeline parallel to road. Prachi Group Water Supply Scheme for supply of drinking water to 77 villages and 1 town of Talala, Veraval and Sutrapada tehsil, Gir Somnath & Junagadh District, Gujarat State. (FP/GJ/WATER/45277/2020)

No - 19 - Bhetali to Kodidra junction Area: 0.2599 ha.

### Legend

-  20°57'50.99"N 70°32'34.97"
-  20°58'23.11"N 70°31'24.26"E
-  46. Bhetali to Kodidra Junction








## Geo-reff Map - 20

Sub : Diversion of 5.95744 ha. of road side forest land for laying of underground drinking water supply pipeline parallel to road.Prachi Group Water Supply Scheme for supply of drinking water to 77 villages and 1 town of Talala, Veraval and Sutrapada tehsil, Gir Somnath & Junagadh District, Gujarat State. (FP/GJ/WATER/45277/2020)

No - 20 - Kodidra junction to Kodidra Area: 0.0635 ha.

### Legend

-  20°58'23.17"N 70°31'24.28"E
-  20°58'41.89"N 70°31'16.56"E
-  47. Kodidra Junction to Kodidra





## Geo-reff Map - 21

Sub : Diversion of 5.95744 ha. of road side forest land for laying of underground drinking water supply pipeline parallel to road.Prachi Group Water Supply Scheme for supply of drinking water to 77 villages and 1 town of Talala, Veraval and Sutrapada tehsil, Gir Somnath & Junagadh District, Gujarat State. (FP/GJ/WATER/45277/2020)

No - 21 - Kodidra to Gunvantpur Area: 0.0599 ha.

### Legend

- A 20°58'41.96"N 70°31'16.64"E
- B 20°58'56.87"N 70°31'5.80"E
- 🌿 48. Kodidra to Gunvantpur









## Geo-reff Map - 22


Sub : Diversion of 5.95744 ha. of road side forest land for laying of underground drinking water supply pipeline parallel to road. Prachi Group Water Supply Scheme for supply of drinking water to 77 villages and 1 town of Talala, Veraval and Sutrapada tehsil, Gir Somnath & Junagadh District, Gujarat State. (FP/GJ/WATER/45277/2020)

No - 22 - Lakhapara to Gorkhmadhi Area: 0.002 ha.

### Legend

-  20°54'28.49"N 70°32'24.04"E
-  20°54'29.14"N 70°32'24.00"E
-  64. Lakhapara to Gorkhmadhi

 Starting Point

 Ending Point






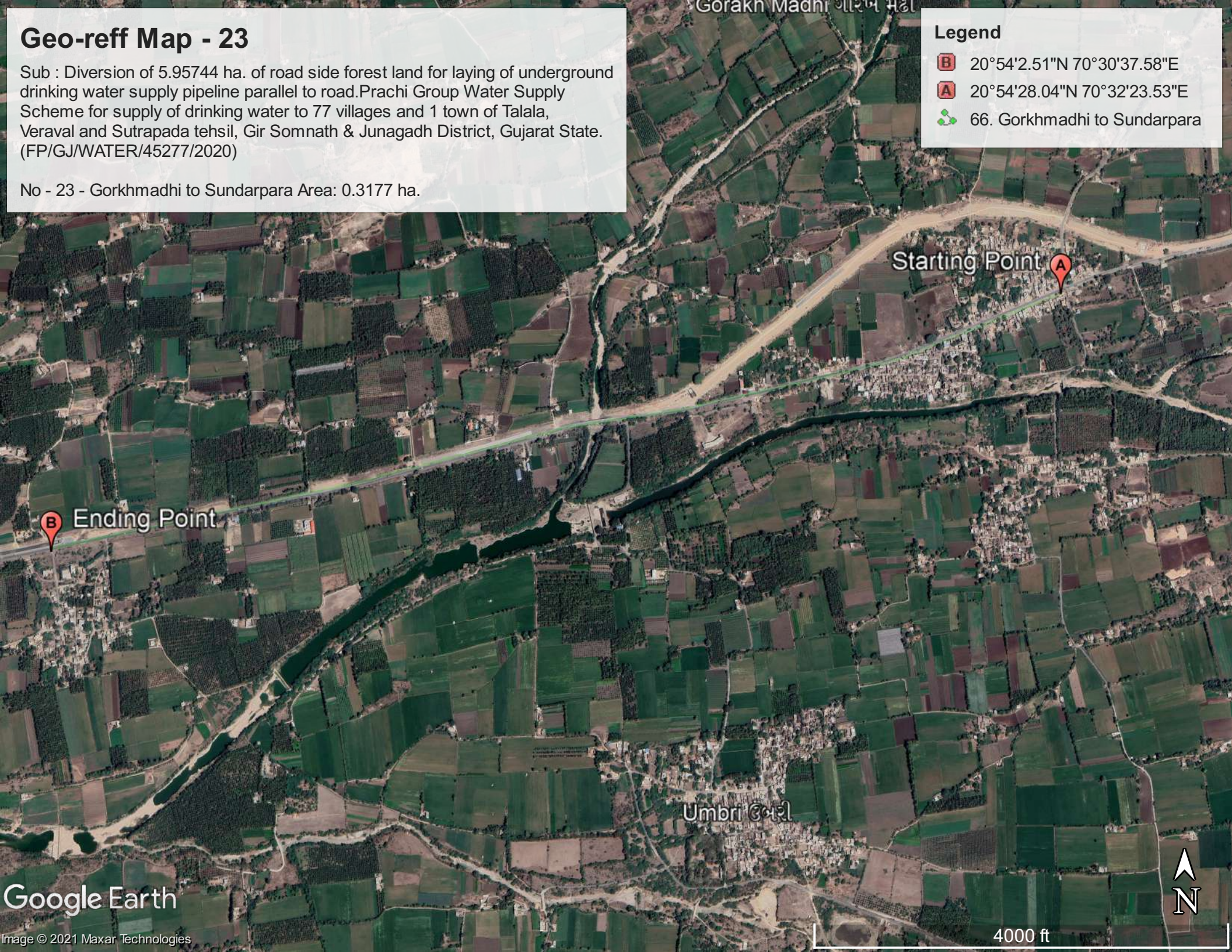
## Geo-reff Map - 23

Sub : Diversion of 5.95744 ha. of road side forest land for laying of underground drinking water supply pipeline parallel to road.Prachi Group Water Supply Scheme for supply of drinking water to 77 villages and 1 town of Talala, Veraval and Sutrapada tehsil, Gir Somnath & Junagadh District, Gujarat State. (FP/GJ/WATER/45277/2020)

No - 23 - Gorkhmadhi to Sundarpara Area: 0.3177 ha.

### Legend

-  20°54'2.51"N 70°30'37.58"E
-  20°54'28.04"N 70°32'23.53"E
-  66. Gorkhmadhi to Sundarpara








## Geo-reff Map - 24

Sub : Diversion of 5.95744 ha. of road side forest land for laying of underground drinking water supply pipeline parallel to road.Prachi Group Water Supply Scheme for supply of drinking water to 77 villages and 1 town of Talala, Veraval and Sutrapada tehsil, Gir Somnath & Junagadh District, Gujarat State. (FP/GJ/WATER/45277/2020)

No - 24 - Gorakhmadhi to Navagam Area: 0.001 ha.

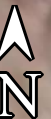
### Legend

-  20°54'28.27"N 70°32'23.82"E
-  20°54'28.66"N 70°32'23.74"E
-  67. Gorakhmadhi to Navagam

Starting point



Ending Point





## Geo-reff Map - 25

Sub : Diversion of 5.95744 ha. of road side forest land for laying of underground drinking water supply pipeline parallel to road. Prachi Group Water Supply Scheme for supply of drinking water to 77 villages and 1 town of Talala, Veraval and Sutrapada tehsil, Gir Somnath & Junagadh District, Gujarat State. (FP/GJ/WATER/45277/2020)

No - 25 - Virodar to Chhara Area: 0.002 ha.


Legend

A

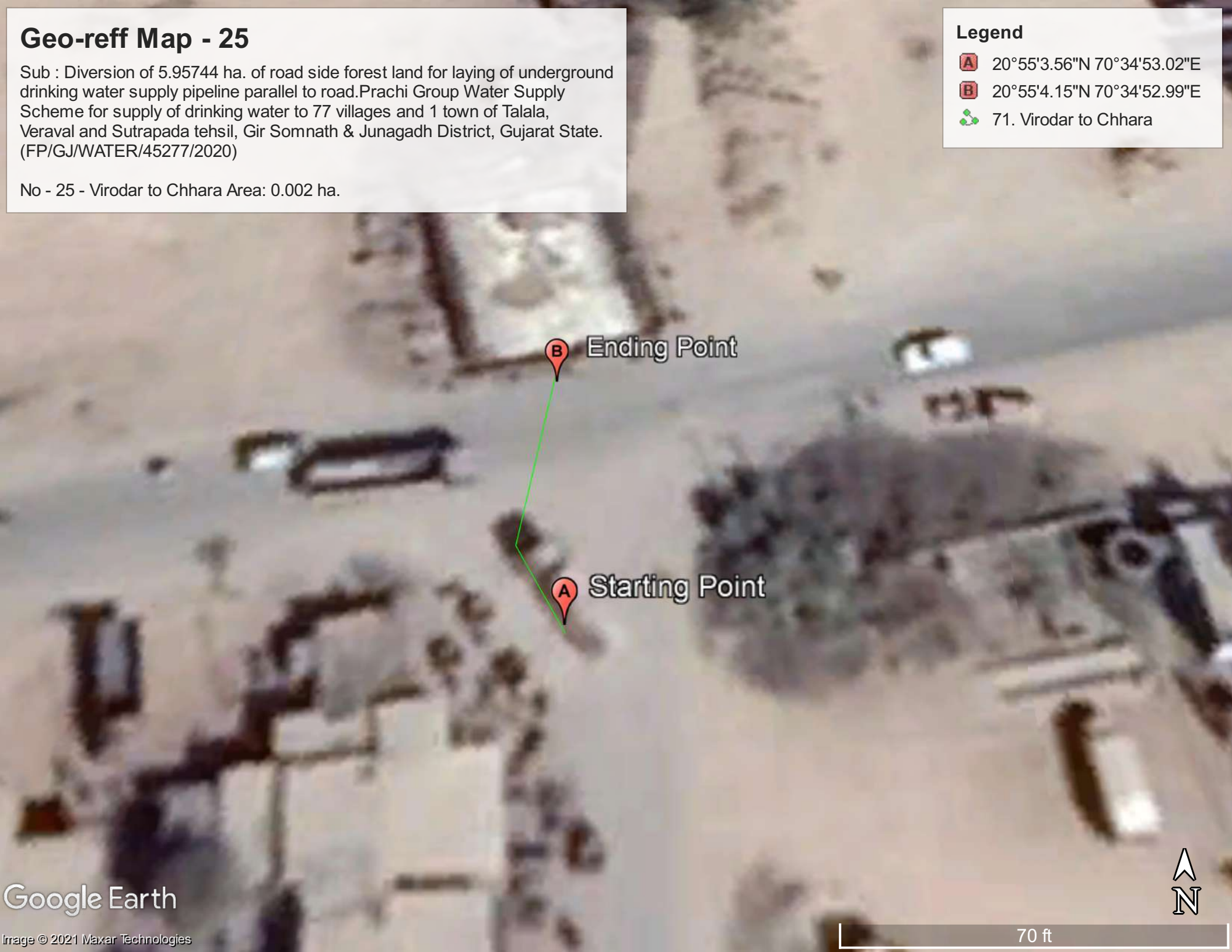
20°55'3.56"N 70°34'53.02"E

B

20°55'4.15"N 70°34'52.99"E



71. Virodar to Chhara








## Geo-reff Map - 26

Sub : Diversion of 5.95744 ha. of road side forest land for laying of underground drinking water supply pipeline parallel to road.Prachi Group Water Supply Scheme for supply of drinking water to 77 villages and 1 town of Talala, Veraval and Sutrapada tehsil, Gir Somnath & Junagadh District, Gujarat State. (FP/GJ/WATER/45277/2020)

No - 26 - Prachi hw to Alidhra Area: 0.007 ha.

### Legend

-  20°55'22.43"N 70°36'7.57"E
-  20°55'22.71"N 70°36'5.75"E
-  75. Prachi hw to Alidhra



Ending Point



Starting Point






## Geo-reff Map - 27

Sub : Diversion of 5.95744 ha. of road side forest land for laying of underground drinking water supply pipeline parallel to road.Prachi Group Water Supply Scheme for supply of drinking water to 77 villages and 1 town of Talala, Veraval and Sutrapada tehsil, Gir Somnath & Junagadh District, Gujarat State. (FP/GJ/WATER/45277/2020)

No - 27 - Prachi hw to Timbadi Area: 0.1044 ha.

### Legend

- B** 20°55'1.72"N 70°37'2.06"E
- A** 20°55'13.61"N 70°36'28.24"E
-  78. Prachi hw to Timbadi

