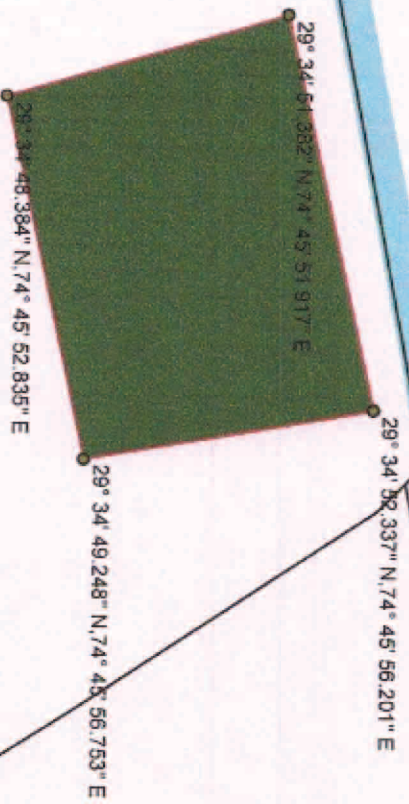
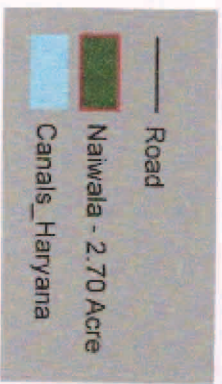


Diversion of 22.36 Hect. of forest land for the Remodeling of Augmentation Canal from RD 0.00 Km (Hamida Head) to 75.250 Km (Sub Reach 0 to 20 Km) in Distt. Yamuna Nagar, Haryana having Site :- Naiwala - 2.70 Acre

74°45'50"E

74°46'0"E

29°34'50"N



Jitender Ahlawat I.F.S.
Dy. Conservator of Forests
SIRSA

74°45'50"E

74°46'0"E