

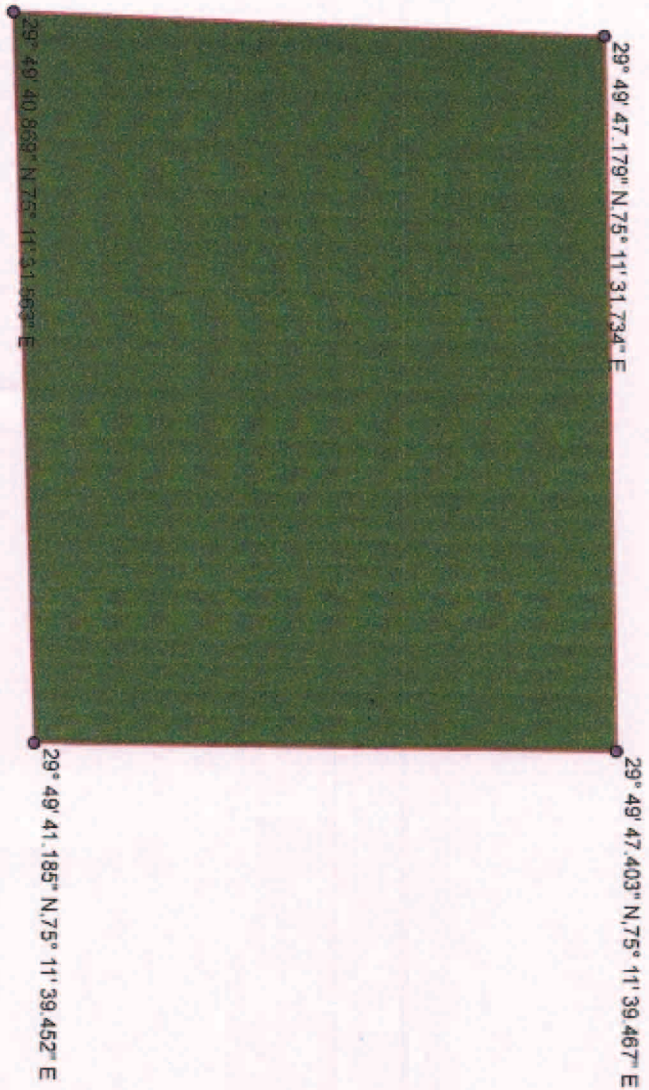
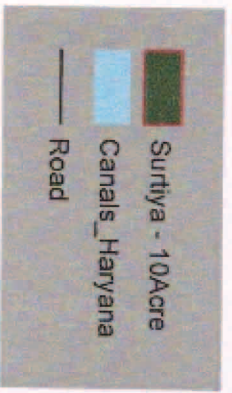
Diversion of 22.36 Hect. of forest land for the Remodeling of Augmentation Canal from RD 0.00 Km (Hamida Head) to 75.250 Km (Sub Reach 0 to 20 Km) in Distt. Yamuna Nagar, Haryana having Site :- Surtiya - 10 Acre

75°11'30"E

75°11'40"E

29°49'40"N

29°49'50"N



Jitender Ahlawat
Jitender Ahlawat I.F.S.
Dy. Conservator of Forests
SIRSA

75°11'30"E

75°11'40"E