

अनरोखा

पन्दरपुर

सिलका

विसाही

भटगाव

वनीयारिकरी

चुनगदी

तेलगाँव

दुग्गा

KUSMUNDA ACA
LAND - 43.342 Ha.

खदीबस्त क्र 303
ग्राम - भटगाव
प. ह. नं. - 22
तहसील - सुरजपुर
जिला - सुरजपुर
मापमान - 1:4000

SOUTH EASTERN COAL FIELDS LTD
 SUB - LAND USE PLAN FOR DUGGA O/C PROJECT
 DISST - SURAJPUR
 PLAN NO. - SECL/BHAT/GM/PLG/LAND DT
 INDEX

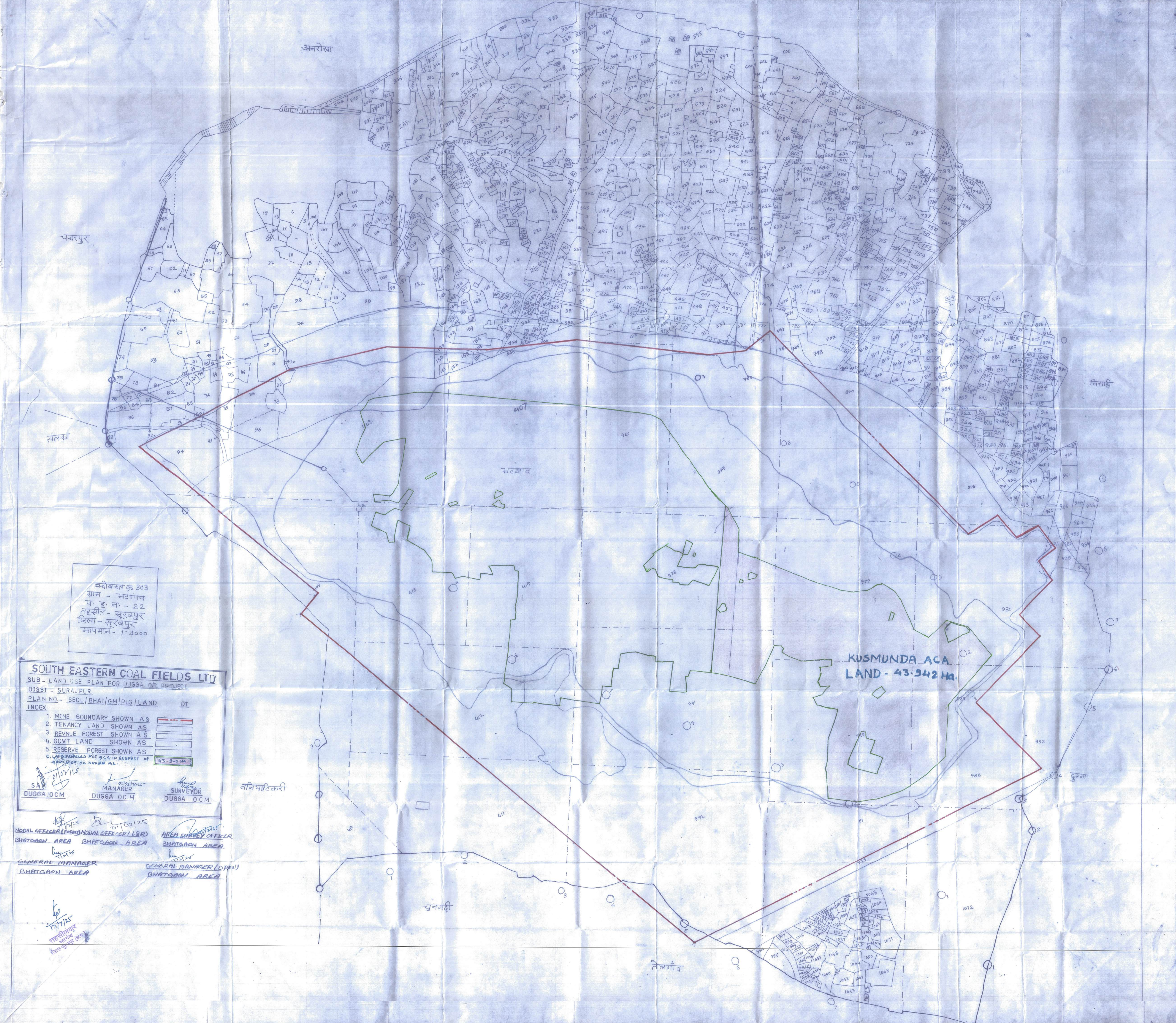
1. MINE BOUNDARY SHOWN AS	---
2. TENANCY LAND SHOWN AS	---
3. REVNU FOREST SHOWN AS	---
4. GOVT LAND SHOWN AS	---
5. RESERVE FOREST SHOWN AS	---

6. LAND PROPOSED FOR ACA IN RESPECT OF
KUSMUNDA O/C SHOWN AS

SAV DUGGA OCM
 MANAGER DUGGA OCH
 SURVEYOR DUGGA OCM

NODAL OFFICER (FORM) BHATGAON AREA
 NODAL OFFICER (L&R) BHATGAON AREA
 AREA SURVEY OFFICER BHATGAON AREA
 GENERAL MANAGER BHATGAON AREA
 GENERAL MANAGER (OPN) BHATGAON AREA

17/7/25
 वनीयारिकरी
 सिलका



82°58'30"E

82°59'0"E

82°59'30"E

83°0'0"E

83°0'30"E

GEO-REFERENCED BOUNDARY MAP OF ACA LAND (AREA-43.942 HA) IDENTIFIED AT DUGGA OCM, BHATGAON AREA AGAINST DIVERSION OF 43.942 HA REVENUE FOREST LAND OF KUSMUNDA OCP, KUSMUNDA AREA, SECL



List of the Coordinates of the Cardinal Points of the Boundary of ACA Land

Points ID	Easting	Northing	Latitude	Longitude
1	703441.573	2586436.950	23° 22' 30.047" N	82° 59' 25.509" E
2	703447.496	2586431.365	23° 22' 29.862" N	82° 59' 25.715" E
3	703486.800	2586362.339	23° 22' 27.601" N	82° 59' 27.065" E
4	703488.026	2586320.722	23° 22' 26.248" N	82° 59' 27.088" E
5	703507.874	2586272.681	23° 22' 24.678" N	82° 59' 27.763" E
6	703552.854	2586260.774	23° 22' 24.271" N	82° 59' 29.341" E
7	703618.999	2586234.977	23° 22' 23.403" N	82° 59' 31.657" E
8	703688.453	2586209.842	23° 22' 22.555" N	82° 59' 34.090" E
9	703756.451	2586185.103	23° 22' 21.721" N	82° 59' 36.472" E
10	703862.020	2586158.925	23° 22' 20.157" N	82° 59' 40.175" E
11	703999.918	2586133.512	23° 22' 20.629" N	82° 59' 41.507" E
12	703954.198	2586164.262	23° 22' 20.954" N	82° 59' 43.423" E
13	703975.007	2586176.689	23° 22' 21.349" N	82° 59' 44.162" E
14	704005.750	2586188.888	23° 22' 21.732" N	82° 59' 45.250" E
15	704048.083	2586163.223	23° 22' 20.878" N	82° 59' 46.728" E
16	704071.102	2586131.208	23° 22' 19.828" N	82° 59' 47.523" E
17	704122.167	2586027.227	23° 22' 16.425" N	82° 59' 49.270" E
18	704171.908	2586003.891	23° 22' 15.645" N	82° 59' 51.009" E
19	704233.136	2586066.663	23° 22' 17.657" N	82° 59' 53.195" E
20	704308.826	2586048.509	23° 22' 17.033" N	82° 59' 55.851" E
21	704398.763	2585947.415	23° 22' 13.707" N	82° 59' 58.968" E
22	704252.221	2585755.654	23° 22' 1.866" N	82° 59' 53.721" E
23	704246.838	2585574.678	23° 22' 1.662" N	82° 59' 53.431" E
24	704180.336	2585508.600	23° 21' 59.544" N	82° 59' 51.065" E
25	704121.563	2585463.193	23° 21' 58.095" N	82° 59' 48.974" E
26	704080.050	2585439.614	23° 21' 57.348" N	82° 59' 47.501" E
27	704020.783	2585418.024	23° 21' 56.672" N	82° 59' 45.404" E
28	703947.117	2585403.952	23° 21' 56.248" N	82° 59' 42.804" E
29	703841.513	2585411.516	23° 21' 56.541" N	82° 59' 39.090" E
30	703829.740	2585510.292	23° 21' 59.757" N	82° 59' 38.724" E
31	703825.349	2585517.123	23° 21' 59.981" N	82° 59' 38.572" E
32	703832.297	2585545.554	23° 22' 0.902" N	82° 59' 38.831" E
33	703831.168	2585623.416	23° 22' 3.433" N	82° 59' 38.829" E
34	703853.700	2585698.480	23° 22' 6.862" N	82° 59' 38.659" E
35	703860.909	2585730.428	23° 22' 8.897" N	82° 59' 38.928" E
36	703803.753	2585742.522	23° 22' 7.316" N	82° 59' 37.822" E
37	703788.065	2585744.645	23° 22' 7.392" N	82° 59' 37.371" E
38	703772.597	2585722.545	23° 22' 6.306" N	82° 59' 36.840" E
39	703803.663	2585782.800	23° 22' 8.625" N	82° 59' 37.938" E
40	703813.849	2585795.256	23° 22' 9.025" N	82° 59' 38.303" E
41	703831.463	2585814.230	23° 22' 9.634" N	82° 59' 38.932" E
42	703796.862	2585811.330	23° 22' 9.555" N	82° 59' 37.713" E
43	703788.846	2585830.558	23° 22' 10.184" N	82° 59' 37.440" E
44	703796.327	2585846.934	23° 22' 10.712" N	82° 59' 37.711" E
45	703797.281	2585858.970	23° 22' 11.103" N	82° 59' 37.751" E
46	703794.050	2585881.475	23° 22' 11.836" N	82° 59' 37.646" E
47	703831.810	2585885.962	23° 22' 11.965" N	82° 59' 38.979" E
48	703831.853	2585911.536	23° 22' 12.796" N	82° 59' 38.886" E
49	703807.549	2585910.667	23° 22' 12.779" N	82° 59' 38.137" E
50	703791.636	2585908.484	23° 22' 12.715" N	82° 59' 37.676" E
51	703745.738	2585902.717	23° 22' 12.548" N	82° 59' 35.957" E
52	703731.279	2585902.047	23° 22' 12.533" N	82° 59' 35.448" E
53	703705.175	2585908.180	23° 22' 12.744" N	82° 59' 34.532" E
54	703657.180	2585932.023	23° 22' 13.540" N	82° 59' 32.854" E
55	703662.375	2585944.032	23° 22' 13.928" N	82° 59' 33.043" E
56	703651.774	2585951.636	23° 22' 14.180" N	82° 59' 32.673" E
57	703630.343	2585952.757	23° 22' 14.226" N	82° 59' 31.919" E
58	703609.311	2585991.148	23° 22' 12.558" N	82° 59' 31.154" E
59	703603.298	2585983.129	23° 22' 11.975" N	82° 59' 30.333" E
60	703568.530	2585810.727	23° 22' 9.838" N	82° 59' 29.874" E
61	703496.701	2585829.814	23° 22' 10.280" N	82° 59' 27.155" E
62	703471.613	2585834.347	23° 22' 10.449" N	82° 59' 26.274" E
63	703436.313	2585840.724	23° 22' 10.672" N	82° 59' 25.034" E
64	703410.324	2585843.275	23° 22' 10.767" N	82° 59' 24.121" E
65	703413.799	2585915.969	23° 22' 13.128" N	82° 59' 24.278" E
66	703421.124	2586069.250	23° 22' 18.106" N	82° 59' 24.611" E
67	703430.537	2586238.500	23° 22' 23.602" N	82° 59' 25.024" E
68	703435.243	2586323.124	23° 22' 26.350" N	82° 59' 25.231" E

List of the Coordinates of the Cardinal Points of the Boundary of Forest Land

Points ID	Easting	Northing	Latitude	Longitude
1	703452.662	2586081.079	23° 22' 18.478" N	82° 59' 25.727" E
2	703448.352	2586090.930	23° 22' 18.788" N	82° 59' 25.580" E
3	703438.514	2586093.093	23° 22' 18.873" N	82° 59' 25.234" E
4	703430.030	2586080.773	23° 22' 18.476" N	82° 59' 24.930" E
5	703421.127	2586069.248	23° 22' 18.106" N	82° 59' 24.611" E
6	703430.479	2586059.050	23° 22' 17.770" N	82° 59' 24.935" E
7	703454.798	2586069.448	23° 22' 18.097" N	82° 59' 25.796" E
8	703499.178	2586181.222	23° 22' 21.710" N	82° 59' 27.413" E
9	703496.369	2586176.485	23° 22' 21.557" N	82° 59' 27.312" E
10	703499.247	2586170.091	23° 22' 21.348" N	82° 59' 27.410" E
11	703508.103	2586171.404	23° 22' 21.387" N	82° 59' 27.722" E
12	703554.306	2586193.361	23° 22' 22.080" N	82° 59' 29.359" E
13	703547.367	2586203.848	23° 22' 22.424" N	82° 59' 29.120" E
14	703529.713	2586204.323	23° 22' 22.447" N	82° 59' 28.499" E
15	703526.738	2586199.225	23° 22' 22.283" N	82° 59' 28.392" E
16	703525.708	2586181.899	23° 22' 21.700" N	82° 59' 28.347" E
17	703550.217	2586187.961	23° 22' 21.806" N	82° 59' 28.215" E
18	704049.993	2586086.382	23° 22' 18.380" N	82° 59' 46.758" E
19	704037.562	2586098.943	23° 22' 18.469" N	82° 59' 46.321" E
20	704035.150	2586079.510	23° 22' 18.164" N	82° 59' 46.232" E
21	704033.962	2586069.769	23° 22' 17.848" N	82° 59' 46.185" E
22	704041.600	2586060.380	23° 22' 17.539" N	82° 59' 46.450" E
23	704313.866	2586039.406	23° 22' 16.735" N	82° 59' 56.024" E
24	704249.075	2586061.029	23° 22' 17.467" N	82° 59' 53.754" E
25	704241.893	2586053.551	23° 22' 17.227" N	82° 59' 53.497" E
26	704228.869	2586037.258	23° 22' 16.703" N	82° 59' 53.031" E
27	704231.836	2586020.497	23° 22' 16.157" N	82° 59' 53.127" E
28	704243.629	2585988.549	23° 22' 15.114" N	82° 59' 53.527" E
29	704292.838	2586018.683	23° 22' 16.071" N	82° 59' 55.274" E
30	704314.322	2586026.885	23° 22' 16.328" N	82° 59' 56.034" E
31	704028.955	2585983.076	23° 22' 9.133" N	82° 59' 45.878" E
32	704015.347	2585923.529	23° 22' 8.853" N	82° 59' 45.410" E
33	703996.856	2585908.511	23° 22' 9.374" N	82° 59' 44.752" E
34	703981.276	2585901.151	23° 22' 8.784" N	82° 59' 44.194" E
35	703991.613	2585782.293	23° 22' 8.524" N	82° 59' 44.554" E
36	704002.577	2585776.809	23° 22' 8.341" N	82° 59' 44.938" E
37	704015.809	2585789.398	23° 22' 8.744" N	82° 59' 45.410" E
38	704027.767	2585564.617	23° 22' 1.433" N	82° 59' 45.721" E
39	704009.747	2585571.316	23° 22' 1.659" N	82° 59' 45.090" E
40	703983.749	2585577.410	23° 22' 1.889" N	82° 59' 44.178" E
41	703999.463	2585625.137	23° 22' 3.413" N	82° 59' 44.754" E
42	703968.386	2585633.249	23° 22' 3.691" N	82° 59' 43.664" E
43	703965.787	2585654.158	23° 22' 4.371" N	82° 59' 43.583" E
44	703948.470	2585656.597	23° 22' 4.458" N	82° 59' 42.975" E
45	703911.275	2585662.454	23° 22' 4.116" N	82° 59' 41.819" E
46	703906.610	2585536.863	23° 22' 0.586" N	82° 59' 41.443" E
47	703926.737	2585525.421	23° 22' 0.205" N	82° 59' 42.195" E
48	703951.739	2585519.092	23° 21' 59.898" N	82° 59' 43.023" E
49	704011.207	2585505.850	23° 21' 59.531" N	82° 59' 45.110" E
50	704022.888	2585546.915	23° 22' 0.860" N	82° 59' 45.541" E

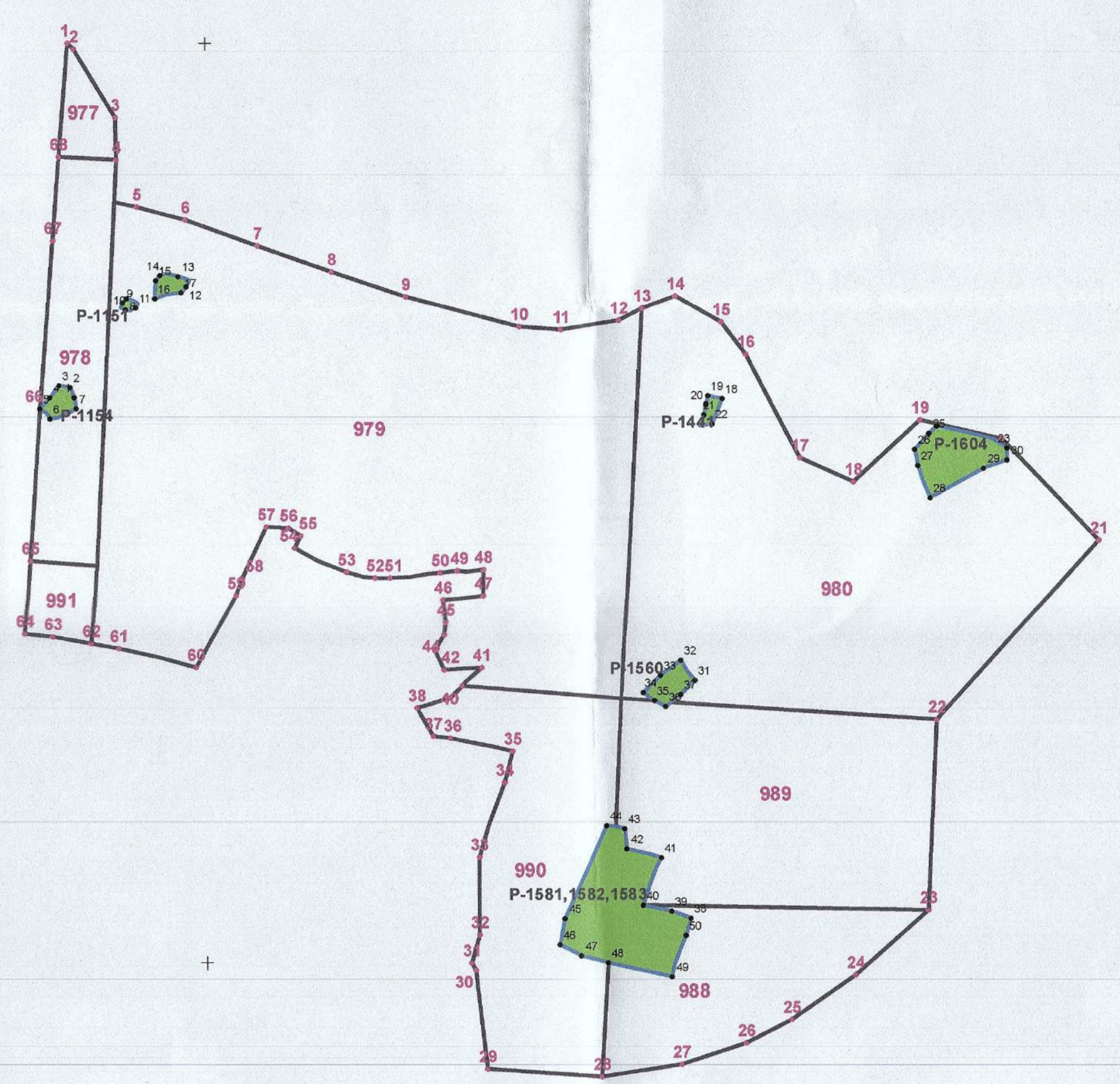
43.942 Ha ACA Non-Forest Land at Dugga OCM of SECL Bhatgaon Area for SECL Kusmunda Area

S.No.	Plot no. (Khasra)	ACA Land Area (Ha)	Govt Land Area (Ha)	Tenancy Land Area (Ha)
1	977	0.401	0.000	0.401
2	978	2.282	0.497	1.785
3	979	17.123	0.917	16.206
4	980	10.885	0.714	10.171
5	988	2.886	0.000	2.886
6	989	5.580	0.260	5.320
7	990	4.323	1.474	2.849
8	991	0.462	0.000	0.462
Total		43.942	3.862	40.080

SL No	Mine Name	Khasra	Area (Ha)	Remarks
1	Dugga_OC	P-1581,1582,1583	1.038	Revenue Forest Land
2	Dugga_OC	P-1560	0.109	Revenue Forest Land
3	Dugga_OC	P-1604	0.361	Revenue Forest Land
4	Dugga_OC	P-1441	0.032	Revenue Forest Land
5	Dugga_OC	P-1149	0.053	Revenue Forest Land
6	Dugga_OC	P-1151	0.012	Revenue Forest Land
7	Dugga_OC	P-1154	0.069	Revenue Forest Land
Total Forest Land			1.674	

Legend

- Forest_Land
- ACA_Land_Kusmunda_43.942Ha



Note:-
 1. DGPS Survey has been conducted on the pillars that were established by the Unit/line authority.
 2. DGPS Survey carried by CMPDI Headquarter team.

Customer		SOUTH EASTERN COALFIELDS LIMITED			
Project		KUSMUNDA OCP, KUSMUNDA AREA, SECL		Job Number 502316	
Subject		Activity	Name	Designation	Signature
PLAN SHOWING GEO-REFERENCED BOUNDARY MAP OF ACA LAND (AREA-43.942 HA) IDENTIFIED AT DUGGA OCM, BHATGAON AREA AGAINST DIVERSION OF 43.942 HA REVENUE FOREST LAND OF KUSMUNDA OCP, KUSMUNDA AREA, SECL		Prepared By	Madhusudan Banik	Hd. Surveyor (C)	14.02.25
		Checked	H.K. Maharana	Sr. Officer Survey	14/02/25