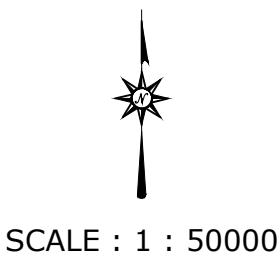
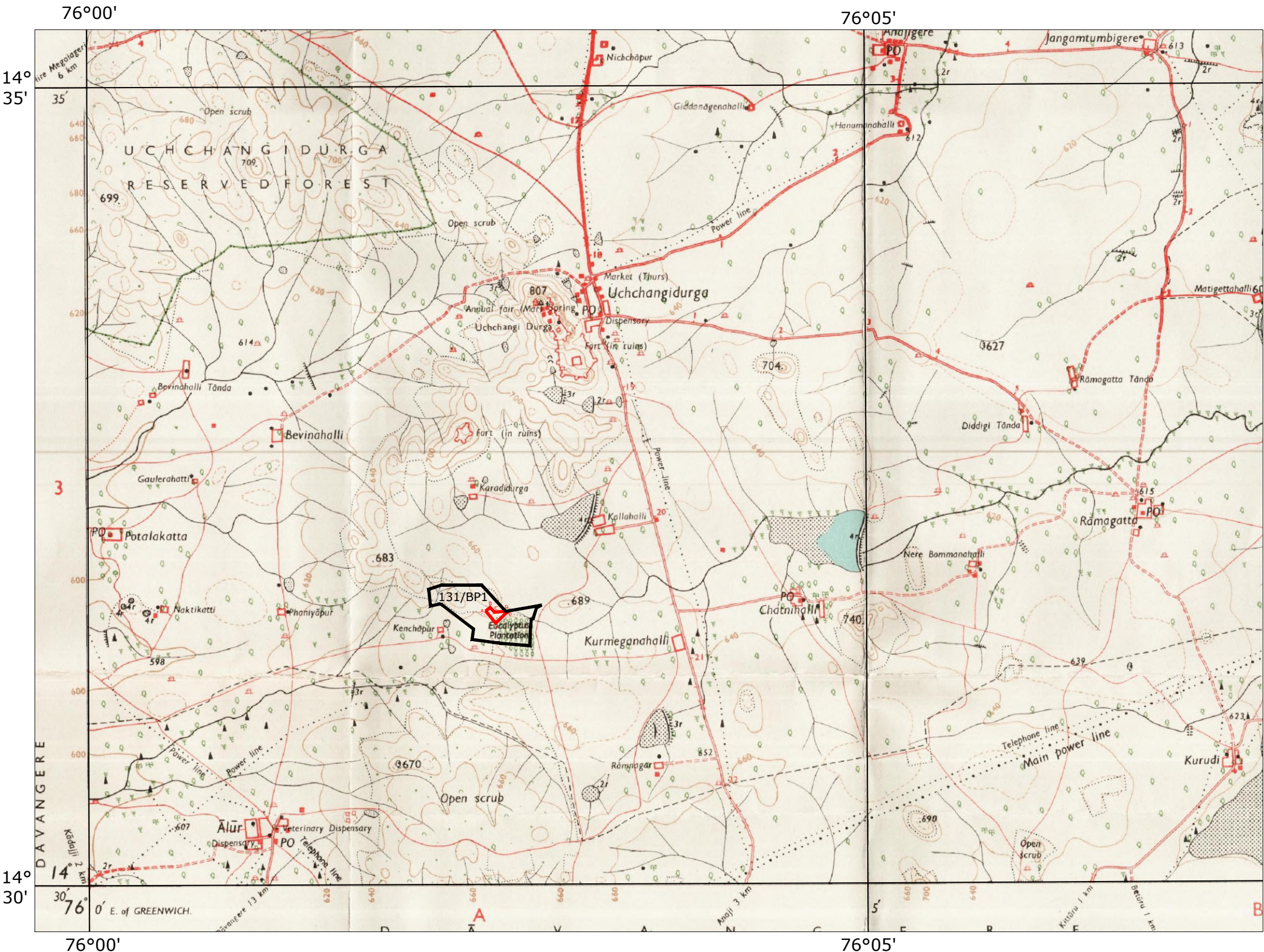
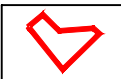


TOPO MAP OF RAISING COMPENSATORY AFFORESTATION AREA ALLOTTED IN C & D LAND



VILLAGE : CHATNAHALLI
DISTRICT : VIJAYANAGARA
TALUK : HARAPANAHALLI
HOBLI : ARASIKERI

INDEX



AREA ALLOTTED TO C&D LAND

PROJECT : WATER PIPELINE PROJECT
APPLICANT : M/s. MSPL LIMITED & AISL HOSAPETE
CA EXTENT : 1.84 Ha
SURVEY No : 131/BP1 Ha
TOPOSHEET No : PART OF 57/B2

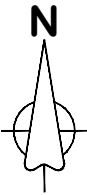
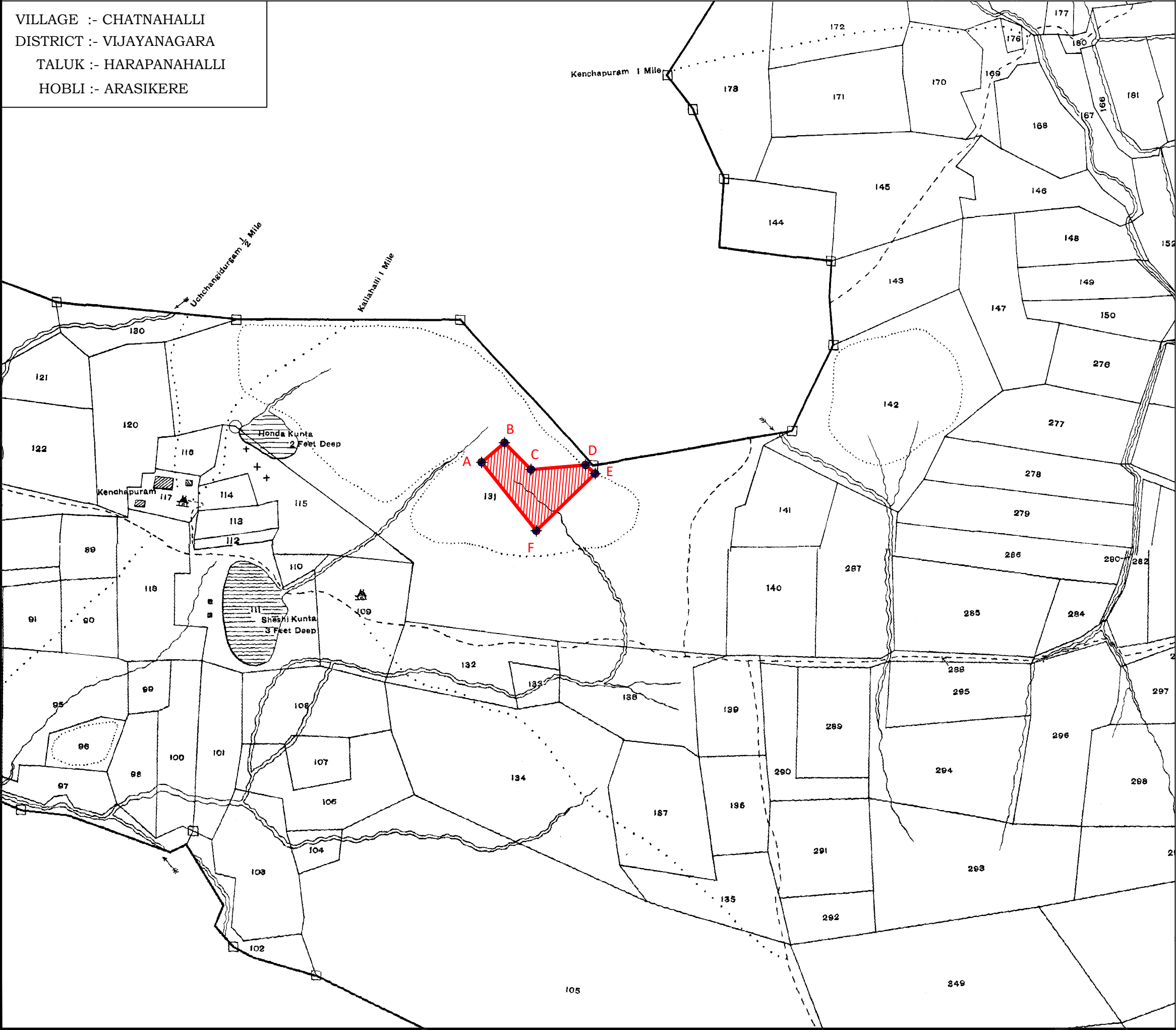
GPS READINGS			
SL.No	POINTS	LATITUDE	LONGITUDE
1	A	N 14° 31' 42.0"	E 76° 02' 33.5"
2	B	N 14° 31' 43.3"	E 76° 02' 35.1"
3	C	N 14° 31' 41.5"	E 76° 02' 36.9"
4	D	N 14° 31' 41.8"	E 76° 02' 40.7"
5	E	N 14° 31' 41.2"	E 76° 02' 41.4"
6	F	N 14° 31' 37.4"	E 76° 02' 37.3"
DATUM : WGS 84			

for AARESS IRON AND STEEL LIMITED

Authorized Signatory

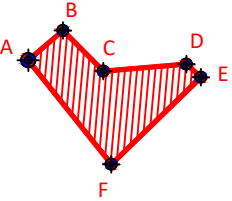
VILLAGE LOCATION MAP OF RAISING COMPENSATORY AFFORESTATION AREA ALLOTTED IN C & D LAND

VILLAGE :- CHATNAHALLI
DISTRICT :- VIJAYANAGARA
TALUK :- HARAPANAHALLI
HOBLI :- ARASIKERE



Scale :- 1"=20 Chain
(1CM=79.20 Mtr)
(1CHAIN=20.0 Mtr)

INDEX



AREA ALLOTTED IN C & D LAND

PROJECT :- WATER PIPELINE PROJECT
APPLICANT :- M/s MSPL LIMITED & AISL HOSPETE.
CA EXTENT :- 1.84 Ha
SURVEY NO :- 131/BP1
TOPOSHEET NO :- PART OF 57-B-2

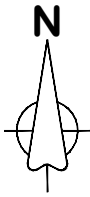
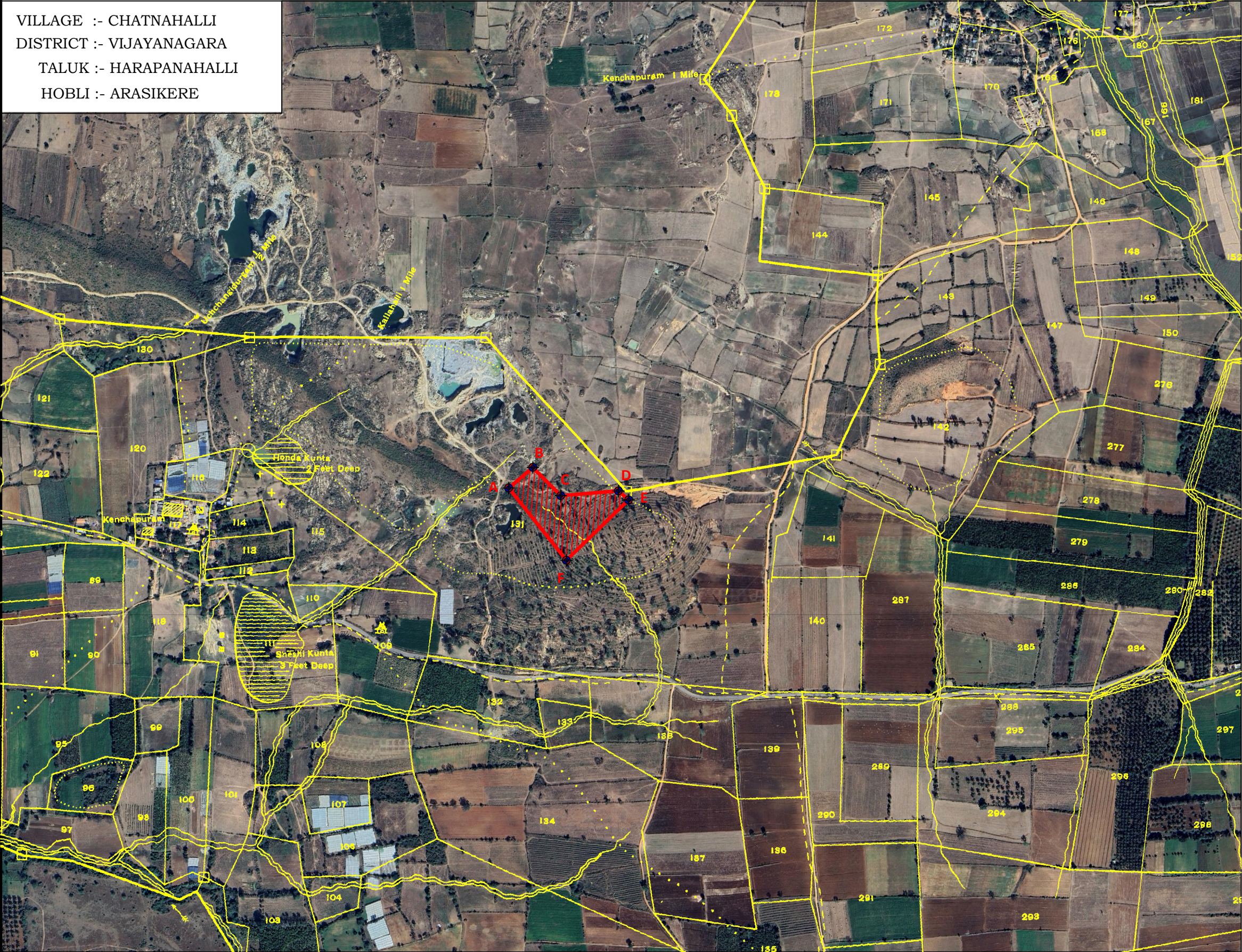
TOPOSHEET NO-57-B-2			
CHATNAHALLI VILLAGE			
GPS Co-ordinates			
Datum - WGS84 (Lat/Lon hddd°mm' ss.s")			
Sl No	Points	Latitude	Longitude
1	A	N14° 31' 42.0"	E76° 02' 33.5"
2	B	N14° 31' 43.3"	E76° 02' 35.1"
3	C	N14° 31' 41.5"	E76° 02' 36.9"
4	D	N14° 31' 41.8"	E76° 02' 40.7"
5	E	N14° 31' 41.2"	E76° 02' 41.4"
6	F	N14° 31' 37.4"	E76° 02' 37.3"

for AARESS IRON AND STEEL LIMITED,

Authorized Signatory

GOOGLE LOCATION MAP OF RAISING COMPENSATORY AFFORESTATION AREA ALLOTTED IN C & D LAND

VILLAGE :- CHATNAHALLI
DISTRICT :- VIJAYANAGARA
TALUK :- HARAPANAHALLI
HOBLI :- ARASIKERE



Scale :- 1"=20 Chain
(1CM=79.20 Mtr)
(1CHAIN=20.0 Mtr)

INDEX



PROJECT :- WATER PIPELINE PROJECT
APPLICANT :- M/s MSPL LIMITED & AISL HOSPETE.
CA EXTENT :- 1.84 Ha
SURVEY NO :- 131/BP1
TOPOSHEET NO :- PART OF 57-B-2

TOPOSHET NO-57-B-2			
CHATNAHALLI VILLAGE			
GPS Co-ordinates			
Datum - WGS84 (Lat/Lon hddd°mm' ss.s")			
Sl No	Points	Latitude	Longitude
1	A	N14° 31' 42.0"	E76° 02' 33.5"
2	B	N14° 31' 43.3"	E76° 02' 35.1"
3	C	N14° 31' 41.5"	E76° 02' 36.9"
4	D	N14° 31' 41.8"	E76° 02' 40.7"
5	E	N14° 31' 41.2"	E76° 02' 41.4"
6	F	N14° 31' 37.4"	E76° 02' 37.3"

for AARESS IRON AND STEEL LIMITED,

Authorized Signatory