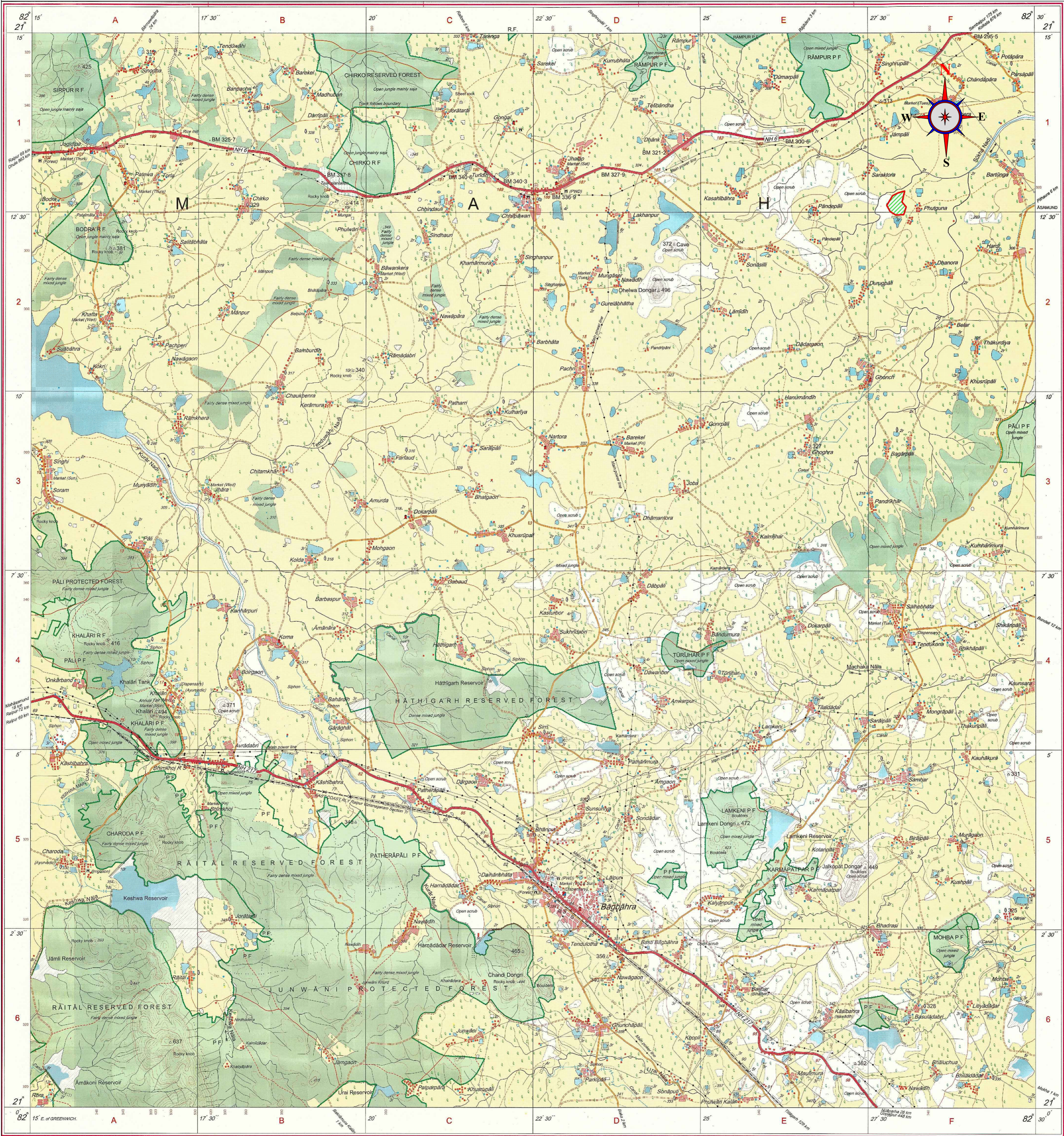


TOPOSHEET MAP(TOPOSHEET NO. 64 K/8) OF THE DGPS SURVEYED AREA FOR PROPOSED C.A. LAND AT VILLAGE- FUTKUNA, DISTRICT -MAHASAMUND (C.G.)



PROJECT  
EAST RAIL CORRIDOR, CHHATTISGARH

APPLICANT

PROJECT DIRECTOR  
IRCON INTERNATIONAL LIMITED  
RAMA PORT, VYAPAR VIHAR,  
BILASPUR (C.G.)



TYPE OF LAND - PROTECTED FOREST LAND  
FOREST DIVISION - MAHASAMUND  
FOREST RANGE - PITHORA  
COMPARTMENT NO. - 239  
VILLAGE - FUTKUNA  
TOTAL SURVEYED AREA FOR C.A. LAND -20.00 HECT.

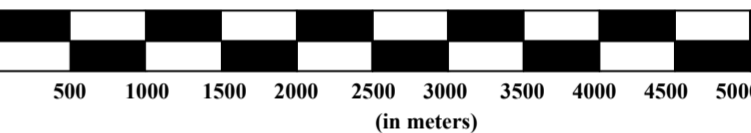
DATE OF SURVEY - 15.02.2016

INDEX



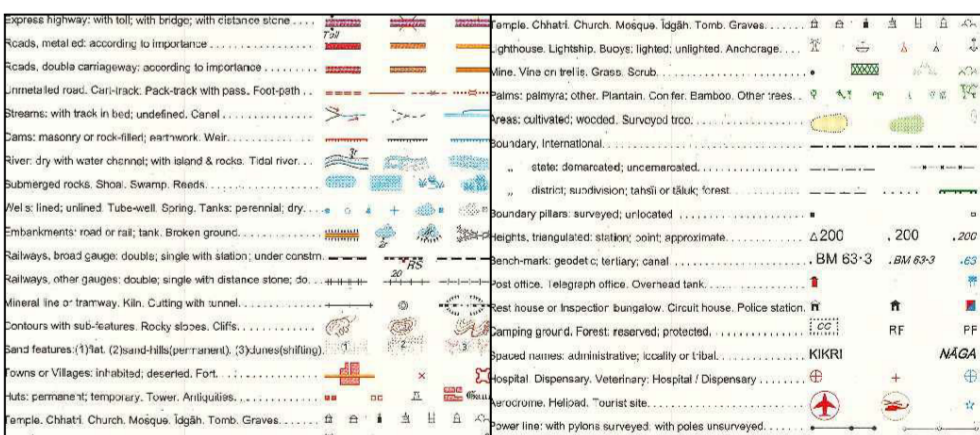
CA LAND AREA SURVEYED BY DGPS

Scale 1:50,000



CO-ORDINATES OF THE SURVEYED AREA BY DGPS FOR C.A. LAND

DGPS POINTS	LONGITUDE	LATITUDE	ELEVATION
BASE	82° 27' 50.74345"E	21° 12' 36.93234"N	258.114
P4C1	82° 27' 48.96121"E	21° 12' 45.01201"N	253.312
P4C2	82° 27' 44.10721"E	21° 12' 42.70680"N	251.971
P4C3	82° 27' 41.11560"E	21° 12' 40.45681"N	252.011
P4C4	82° 27' 37.44121"E	21° 12' 34.92032"N	252.596
P4C5	82° 27' 41.76361"E	21° 12' 29.30444"N	253.579
P4C6	82° 27' 47.16431"E	21° 12' 25.20122"N	259.711
P4C7	82° 27' 57.60012"E	21° 12' 27.36133"N	252.797
P4C8	82° 27' 57.24023"E	21° 12' 32.76032"N	252.841
P4C9	82° 27' 50.49721"E	21° 12' 37.09832"N	255.421
GCP1	82° 28' 10.11198"E	21° 12' 25.87409"N	259.885
GCP2	82° 27' 52.41733"E	21° 12' 01.60127"N	264.704



Surveyed by :-

Naaven Nirmalkar  
(Geologist)



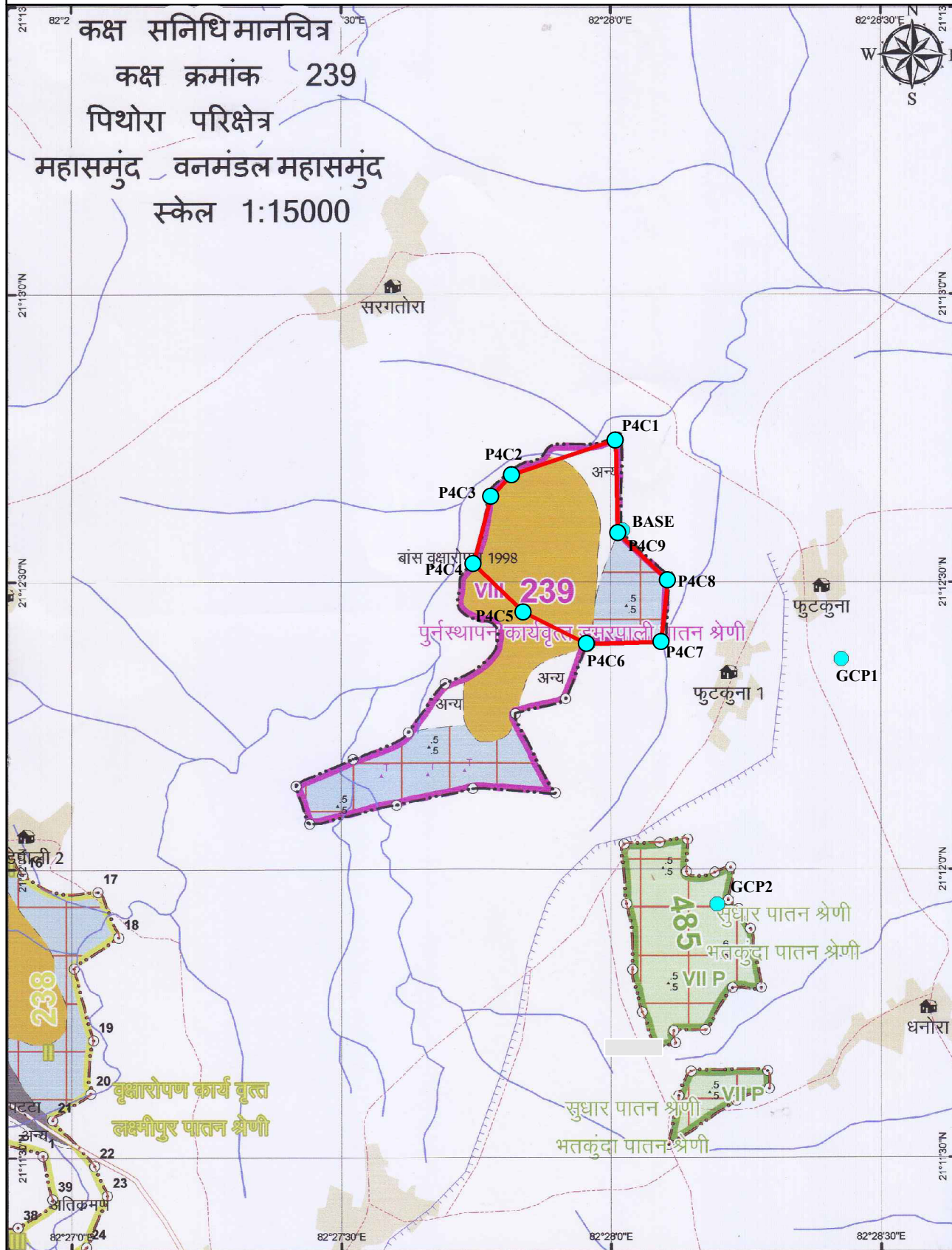
Alok Verma  
Manager (Geologist)

Signature of Alok Verma

For,  
Siddharth Geo Consultants  
621/3 1st Floor , Ramkund, Samta Colony,  
Behind Life Worth Hospital , Raipur (C.G.)



**GEO REFRENCED FOREST MAP OF THE SURVEYED AREA FOR PROPOSED C.A. LAND AT  
VILLAGE FUTKUNA, DISTRICT MAHASAMUND (C.G.)**



**PROJECT**  
**EAST RAIL CORRIDOR, CHHATTISGARH**

**APPLICANT**

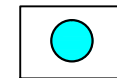
**PROJECT DIRECTOR**  
**IRCON INTERNATIONAL LIMITED**  
**RAMA PORT , VYAPAR VIHAR,**  
**BILASPUR (C.G.)**



**TYPE OF LAND** - PROTECTED FOREST LAND  
**FOREST DIVISION** - MAHASAMUND  
**FOREST RANGE** - PITHORA  
**COMPARTMENT NO.** - 239  
**VILLAGE** - FUTKUNA  
**TOTAL SURVEYED AREA FOR C.A. LAND** - 20.00 HECT.

**DATE OF SURVEY** - 15 .02 .2016

**INDEX**



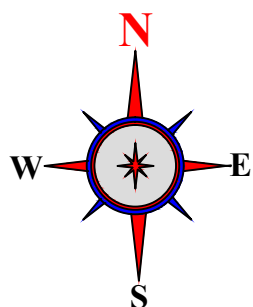
**BOUNDARY POINT OF DGPS SURVEYED  
AREA**



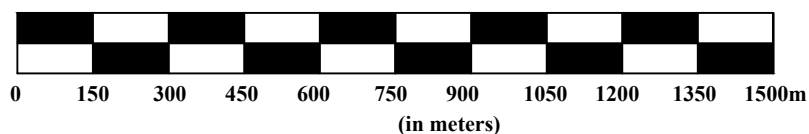
**CA LAND AREA SURVEYED BY DGPS**

**CO-ORDINATS OF THE SURVEYED AREA BY DGPS FOR  
CA LAND**

DGPS POINTS	LONGITUDE	LATITUDE	ELEVATION
BASE	82° 27' 50.74345"E	21° 12' 36.93234"N	258.114
P4C1	82° 27' 48.96121"E	21° 12' 45.01201"N	253.312
P4C2	82° 27' 44.10721"E	21° 12' 42.70680"N	251.971
P4C3	82° 27' 41.11560"E	21° 12' 40.45681"N	252.011
P4C4	82° 27' 37.44121"E	21° 12' 34.92032"N	252.596
P4C5	82° 27' 41.76361"E	21° 12' 29.30444"N	253.579
P4C6	82° 27' 47.16431"E	21° 12' 25.20122"N	259.711
P4C7	82° 27' 57.60012"E	21° 12' 27.36133"N	252.797
P4C8	82° 27' 57.24023"E	21° 12' 32.76032"N	252.841
P4C9	82° 27' 50.49721"E	21° 12' 37.09832"N	255.421
GCP1	82° 28' 10.11198"E	21° 12' 25.87409"N	259.885
GCP2	82° 27' 52.41733"E	21° 12' 01.60127"N	264.704



**Scale 1:15,000**



**Surveyed by :-**

**Naveen Nirmalkar**  
**Geologist**



**Alok Verma**  
**Manager (Geology)**

**For,**  
**Siddharth Geo Consultants,**  
**621/3 Ist Floor , Ramkund, Samta Colony,**  
**Behind Life Worth Hospital , Raipur (C.G.)**

