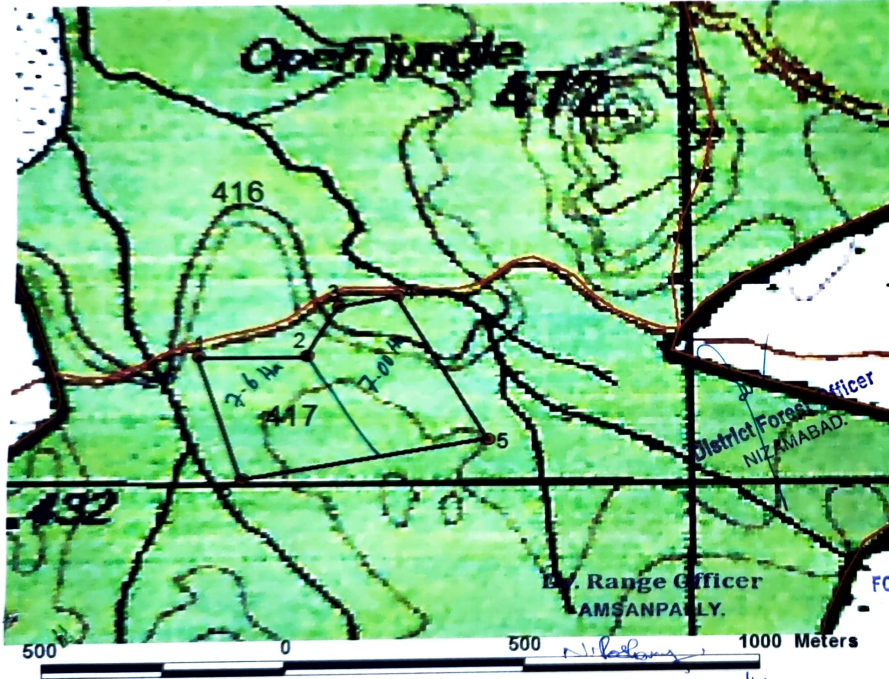


14.60 Ha CA-DFL Land identified for in lieu of Diversion of forest land for 6.086 Ha (3.294 Ha in Nizamabad Division) of Telangana state for laying of 220 V Double circuit linewith multi circuit towers in forest land to extend power supply to Yacharam Thanda pump house under Kaleshwaram lift irrigation project in package-22 in Compt. No 417 of Amsanpally Reserve Forest Amsanpally Beat & Section at Indalwai Range.



SURVEYED AREA : 14.60 Ha

Sl.no	Lat	Long
1	18.58578	78.32390
2	18.58578	78.32597
3	18.58677	78.32658
4	18.58699	78.32771
5	18.58410	78.32942
6	18.58331	78.32472

CH. EF CONSERVATOR OF FORESTS
Nizamabad Circle, Nizamabad

**FOREST RANGE OFFICER
INDALWAI.**

**Forest Divisional Office
Nizamabad.**

and a width of 35 m (as per the MoEF&CC guidelines for Transmission lines)

- The User Agency (M/s. TSTRANSCO) has proposed for laying of 220 KV double circuit line with multi circuit towers in forest land to extend power supply to Yacharam Thanda Pump house under Kaleshwaram Lift Irrigation Scheme, Package-22.