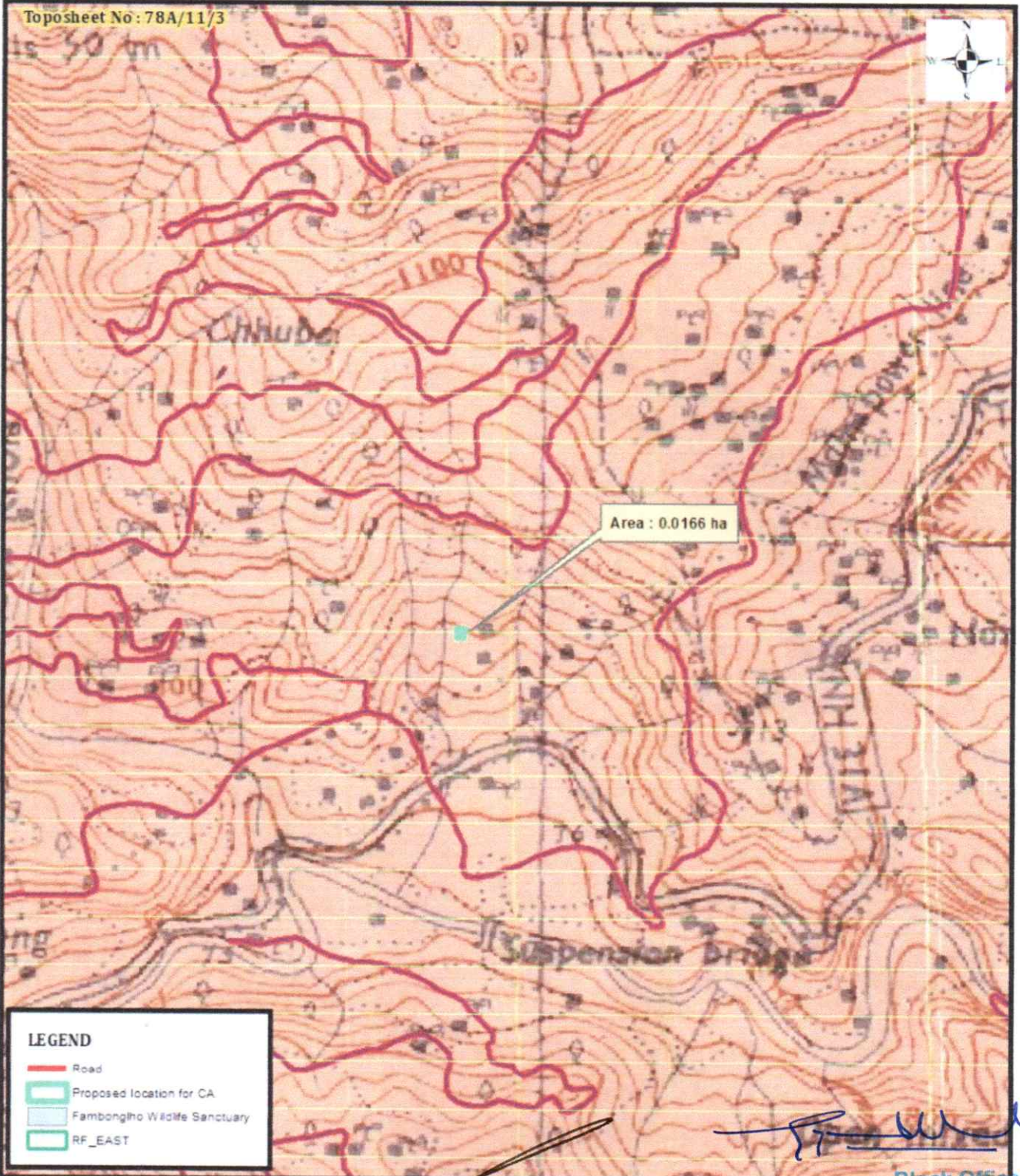


Map showing the location of f Compensatory Afforestation at Radang Khasmal in lieu of diversion 0.0083 ha of forest land for construction of Sanskrit Pathshala at Radang in East District of Sikkim under Ranipool (T) Range . (Area : 0.0166 ha)

Toposheet No : 78A/11/3



LEGEND

- Road
- Proposed location for CA
- Fambongtho Wildlife Sanctuary
- RF_EAST

88°34'40"E

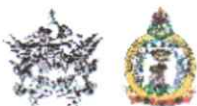
88°35'0"E

88°35'20"E

27°16'40"N

27°16'20"N

27°16'0"N



Govt Of Sikkim
Forest & Environment Department

Divisional Forest Officer
East (T) Division
FEWMD

Assistant Conservator of Forest
East Territorial Division
Deptt. of Forest & Environment
Govt. of Sikkim

Block Officer
Ranipool (T) Block
FEWMD

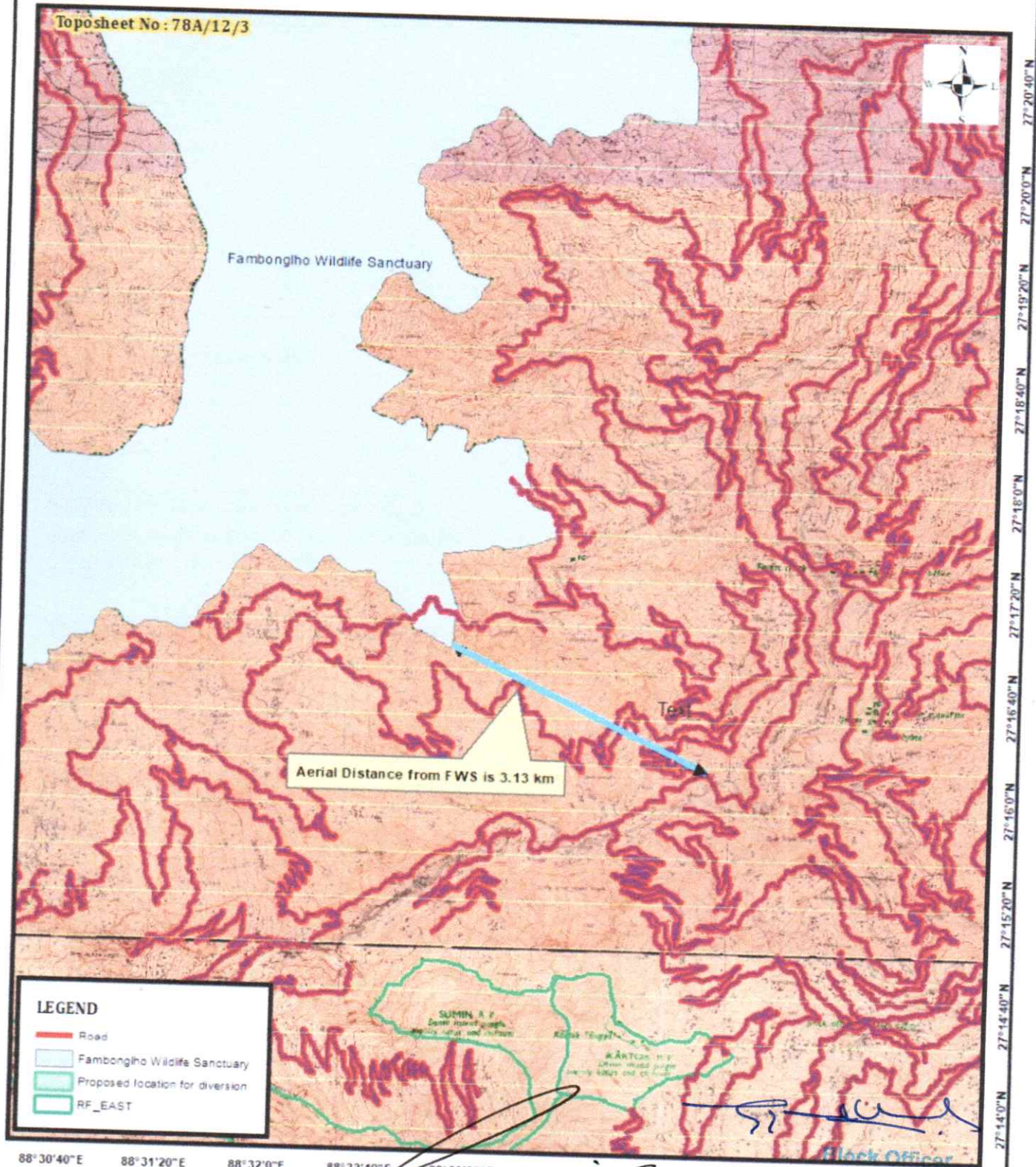
0 6:125 0.25

Map Prepared By : East Territorial Division
Vidyal No:225/ET/D/F&E

FOREST RANGE OFFICER
Ranipool Territorial Range
Forest & Environment Deptt.
Government of Sikkim

Map showing the Aerial Distance of diversion of 0.0083 ha of Forest land for construction of Sanskrit pathshala at Radang in East District of Sikkim from Fambonglho Wildlife Sanctuary is 3.13 km .

Toposheet No: 78A/12/3



Assistant Commissioner of Forest
East Territorial Division
Deptt. of Forests & Environment
Govt. of Sikkim I.S.

Divisional Forest Officer
East (T) Division
FEWMD

FOREST RANGE OFFICER
Ranipol Territorial Range
Forest & Environment Deptt.
Government of Sikkim

Map Prepared By : East Territorial Division
Vide SI No:224/ET/D/F&ED