

पश्चिमी बंगाल
WEST BENGAL

FIRST EDITION

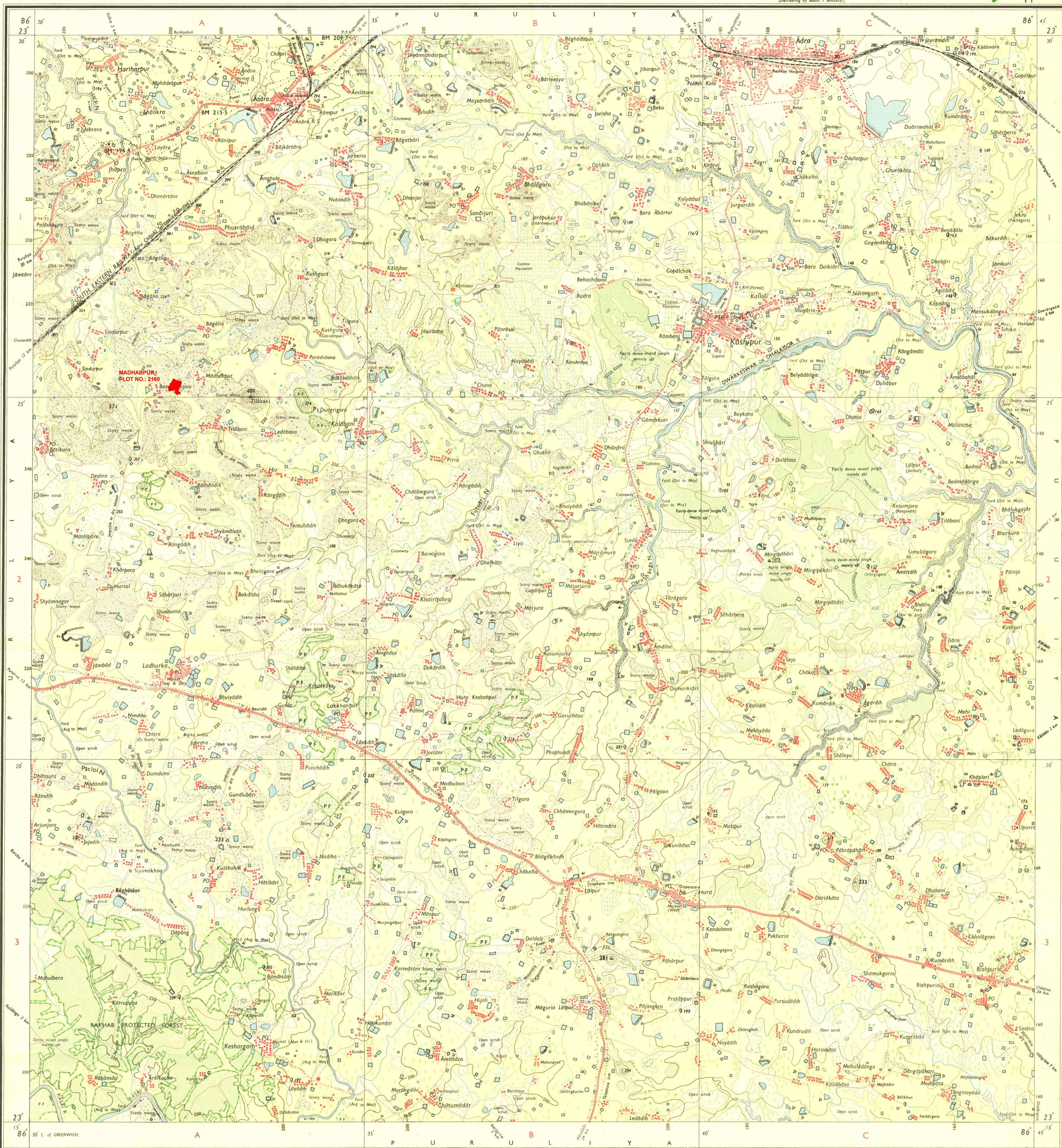
Magnetic Variation from True North about $\frac{1}{2}^{\circ}$ West in 1975
(Decreasing by about 1' annually).

भारत INDIA
REFER TO THIS MAP AS 1:50,000
SHEET 73 1/11 FIRST EDITION

No. 73 1/11

PURULIYA DISTRICT.

Surveyed 1973-74.



Res. No. 4445 D-76 (D.O.S-1-50,000) 73° 12' 4.05 4' 87"
Roads, metalled: according to importance, distance stone
unmetalled: do do bridge
Cart-track: pack-track and pass. Foot-path with bridge
Bridges: with piers without. Causeway. Ford or Ferry
Streams: with track in bed undefined. Canal
Dams: masonry or rock-filled earthwork. Well:
River banks: shelving: steep: 3 to 6 metres: over 6 metres
dry with water channel: with island & rocks tidal river
Submerged rocks. Shoal. Swamp. Reeds
Wells: lined: unlined. Tube well. Spring. Tank: perennial dry
Embankments: road or rail track. Broken ground
other gauges: do do with distance stone: do
Mineral line: or tramway. Telegraph line. Cutting with tunnel
Contours with surface features. Slopes. Cliffs
Sand features: (cliff) sand hills and dunes (surge) shifting dunes

Index to Sheets

73 1/1	73 1/2	73 1/3
73 1/4	73 1/5	73 1/6
73 1/7	73 1/8	73 1/9
73 1/10	73 1/11	73 1/12

Water features are shown in blue where they generally contain water.
Cultivated areas are coloured yellow.
The exterior boundaries of areas of Reserved or Protected Forests are shown by green ribbons.

भारत के नक्शाबैच के दिशा में प्रकाशित.
Published under the direction of the Survey General of India.

1977.
1:50,000

HEIGHTS & CONTOURS IN METRES
CONTOUR INTERVAL 20 METRES

Contours are approximate.
A relative height: dr. represents the approximate height, in metres, between the top and bottom of a steep slope.
Wooded areas are coloured green. Scattered trees and other vegetation are in green, but prominent surveyed trees are in black.

Administrative Index

PURULIYA

Printed at the I.D.P.O. (Printers) Group of Survey of India.
Towns or Villages: inhabited: deserted: Fort
Huts: permanent: temporary: Tower: Antiquities: Stupa
Temple: Chhatra: Church: Mosque: Idgah: Tomb: Graves
Lighthouse: Lightship: Buoy: Lighted: unlighted: Anchorage
Mine: Vine: or: rivulet: Grass: Scrub
Palms: palmira: other: Plantain: Conifer: Bamboo: Other: trees
Boundary: international: state-demarcated: undemarcated
district: sub-district: taluk: or: sub-division
Boundary pillars: surveyed: un-surveyed: village: trijunction
Height: triangulated: station: point: approximate: 200 200 200
Bench mark: geodetic: tertiary: canal: BM 63-3 BM 63-3 63
Post office: Telegraph office: Combined office: Police station: PO TO PTO PS
Bungalow: dak: or: warehouse: inspection: Rest house: DR BR (Cm) BR (Tm)
Circuit house: Camping ground: Forest: reserved: protected: CH CG R.F. P.F.
Spaced names: administrative: locality or tribal: KIKRI NGA

1st Edition 1977.
(Previous Edition on 1:63,000 scale 1:11,144).

REFER TO THIS MAP AS 1:50,000
SHEET 73 1/11 FIRST EDITION

INDIA

भारत

GOVERNMENT OF INDIA COPYRIGHT, 1977.
Price: Ten Rupees.