

WEST BENGAL

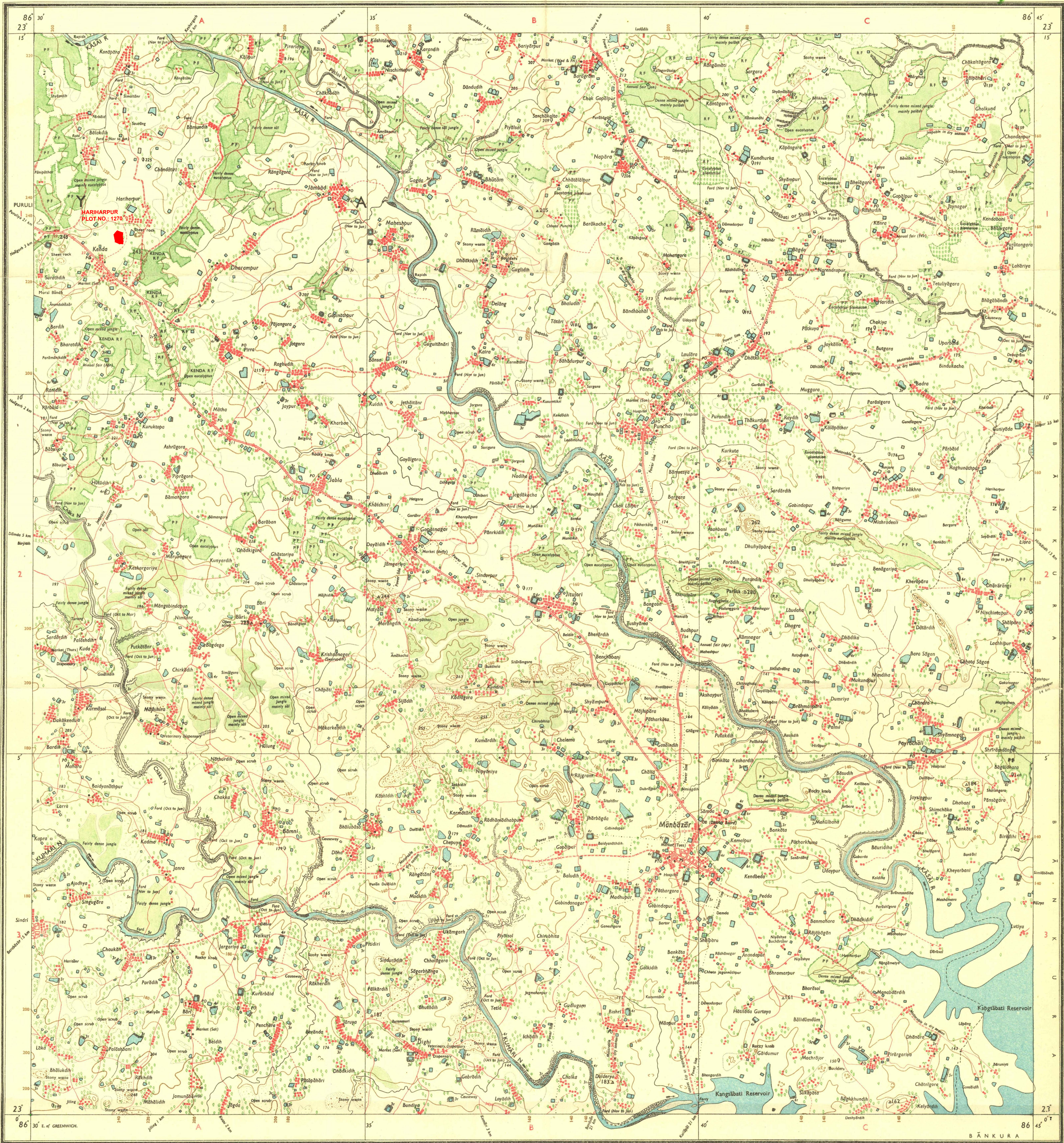
FIRST EDITION

Magnetic Variation from True North about $\frac{1}{4}^{\circ}$ West in 1975.
(Decreasing by about 1' annually).

No. 73 1/12

BĀNKURA & PURULIYA DISTRICTS.

Surveyed 1973-74



Res. No. 449/077 (D.O. 51/31/33) 814/77-8/30/2/94.

- Roads: metalled, according to importance; distance stone unmetalled; do. do. : bridge.
- Cart-track, pack-track and pass. Foot-path with bridge.
- Bridges with piers without. Causeway. Ford or Ferry.
- Streams with track in bed, undefined. Canal.
- Dams: masonry or rock-filled earthwork. Weir.
- River banks: shelling, steep, 3 to 6 metres; over 6 metres.
- dry with water channel; with island & rocks. Tidal river.
- Submerged rocks. Shoal. Swamp. Reeds.
- Wells lined; unlined. Tube-well. Spring. Tanks: perennial; dry.
- Embankments: road or rail; low. Broken ground.
- Railways: broad gauge; double; single with station under construction.
- other gauges: do. do. with distance stone do.
- Light railway or tramway. Telegraph line. Cutting with tunnel.
- Contours with sub-features. Rocky slopes. Cliffs.
- Sand features: (a) sand hills and dunes; (b) sand dunes; (c) sand dunes.

1st Edition 1977.
(Previous Editions on 1-inch scale: 1st 1928/1944; 2nd 1963).

Published under the direction of Major-General K.L. Khosla, B.Sc., B.E. (Civil), F.I.S., F.I.E., FIGU., MASCE. (U.S.A.), Surveyor General of India, 1977.

1:50,000

500 m to 1 cm
Metres 1000 500 0 1 2 3 4 5 6 7 Kilometres

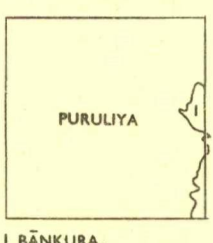
HEIGHTS & CONTOURS IN METRES
CONTOUR INTERVAL 20 METRES

*water features are shown in blue where they generally contain water.
*cultivated areas are coloured yellow
The watershed boundaries of areas Reserved or Protected Forests are shown by green ribbons.
*Not applicable.

Contours are approximate.
A relative height, 'R', represents the approximate height in metres between the top and bottom of a steep slope.
Wooded areas are coloured green. Scattered trees and other vegetation are in green, but prominent surveyed trees are in black.

The kilometre stone numbers along roads are shown in slant type, e.g., '5' whereas milestone numbers are shown in upright type, e.g., '5'.

Administrative Index



- Towns or Villages: inhabited; deserted. Fort.
- Huts: permanent; temporary. Tower. Antiquities.
- Temple. Chhatra. Church. Mosque. Idgah. Tomb. Graves.
- Lighthouse. Lightship. Buys. Lighted. Unlighted. Anchorage.
- Mine. Vines on trellis. Grass. Scrub.
- Palms: palmyra; other. Plantain. Conifer. Bamboo. Other trees.
- Boundary: international.
- state: demarcated; undemarcated.
- district: subdivided; taluk; forest.
- Boundary pillars: surveyed; unlocated. Village junction.
- Highways: triangulated station points; approximate.
- Bench mark: geodetic; tertiary; canal.
- Post office. Telegraph office. Combined office. Police station. PO. TO. PTO. PS.
- Bungalows: dak or travellers; inspection. Rest-house.
- Circuit house. Camping ground. Forest: reserved; protected. CH. CG. RF. PF.
- Spaced names: administrative, locality or tribal. KIKRI. NAGA.

GOVERNMENT OF INDIA COPYRIGHT, 1977.
Price: Five Rupees.

REFER TO THIS MAP AS :- 1:50,000
SHEET 73 1/12 FIRST EDITION

INDIA