

No. F45J6

Scale 1:50,000

Barkura WEST BENGAL (73N/1)	F45J5 (73N/5)	F45J9 (73N/9)
F45J2 (73N/2)	F45J6 (73N/6) Paschim Medinipur WEST BENGAL	F45J10 (73N/10)
F45J3 (73N/3)	F45J7 (73N/7)	F45J11 (73N/11)

1 Bardhaman, West Bengal
2 Panna Medinipur, West Bengal
3 Hughli, West Bengal

भारतीय सर्वेक्षण विभाग SURVEY OF INDIA

1st Edition 2010. Price: Rs. 70/-

CONVENTIONAL SYMBOLS

Express highway with toll, with bridge, with distance stone	
Roads, metalled according to importance	
Roads, double carriageway according to importance	
Unmetalled road, Cart track, Pack track with pass, Foot path	
Streams with bank, with or without canal	
Canal, masonry or rock-filled, earthenwork, Weir	
River, dry or water channel, with island or rocks, Tidal river	
Submerged rocks, Shoal, Swamp, Reeds	
Weak track, without, Tidal water, Spring, Tanka, perennial, dry	
Embankment road or rail tank, Bridge, ground	
Railways, broad gauge, double, single with station, under construction	
Railways, other gauges, double, single with station, under construction	
Mineral line or railway, Rail, Cutting with tunnel	
Cuttings with sub-features, Railway station, CTR, CTR	
Steel features (Rail, Standard, telegraph, etc.) (Stations, etc.)	
Towns or Villages, inhabited, deserted, Fort	
Fort, permanent, temporary, Tower, Antennae	
Temple, Church, Mosque, High, Tank, Dargah	
Lighthouse, Lightship, Buoy, lighted, unlighted, Anchorage	
Mine, Vene on hill, Grass, Scrub	
Palm, palm grove, other, Plantain, Conifer, Bamboo, Other trees	
Area, cultivated, wooded, Buried tree	
Boundary, international	
State, demarcated, undemarcated	
Boundary, subdivision, natural or artificial, forest	
Height, spot, triangulation, aneroid, aneroid	
Bench mark, geodetic, levelling, canal	
Post office, Telegraph office, Overhead tank	
Post house or inspection bungalow, Circuit house, Police station	
Campsite, ground, Forest, reserved, protected	
Spotted names, administrative, locality or street	
Hospital, Dispensary, Veterinary, Hospital, Dispensary	
Airborne, heliport, Trench site	
Power line, with pylons surveyed, with poles unsurveyed	

REFERENCES

PSD Public Works Department
AY-60 National Highway No. 80

NOTES

Heights are in metres and above Indian mean sea level.
Contours are approximate.
A station height, e.g., 30, marked along a canal, indicates the height of the top of the canal embankment above the adjacent country.
A station height, e.g., 30, represents the approximate height, in metres, between the top and bottom of a steep slope.

COMPILED INDEX

A. Compiled from 1:25,000 survey, 1967-68. Updated for major details during 2005-06.

Projection - UTM Datum - WGS 84

Magnetic Variation from True North about 1° West in 2005.
(Annual change negligible)

1:50,000

500 m to 1 km 2 km to 1 km 3 Kilometres

CONTOUR INTERVAL 10 METRES

For further details about this map, please contact

Director

WB & Sikkim Geo-Statistical Data Centre

Survey of India, 13 Wood Street, Kolkata

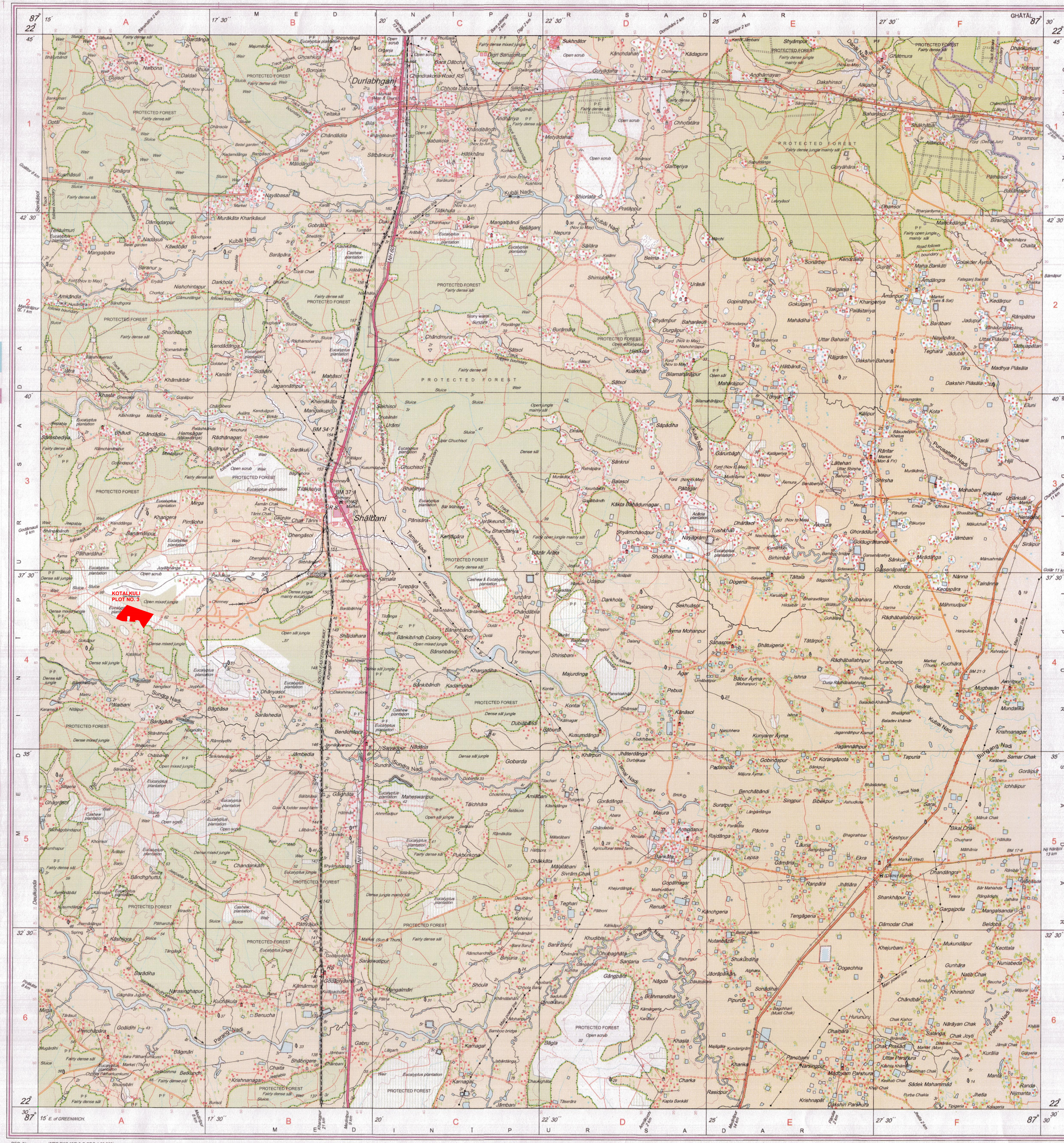
WEBSITE - www.surveyofindia.gov.in

Reproduction in whole or part by any means is prohibited

without the written permission of Survey of India, the

National Mapping Agency.

GOVERNMENT OF INDIA COPYRIGHT, 2010.



IN SURVEY OF INDIA TOPOMAP 73N/6 THE FOLLOWING COMPENSATORY
AFFORESTATION LANDS ARE PRESENT

DISTRICT	BLOCK	MOUZA	JL NO	PLOT NO.	AREA (HECTARE)
PASCHIM MEDINIPUR	SALBONI	KOTALKULI	326	3	25.3814