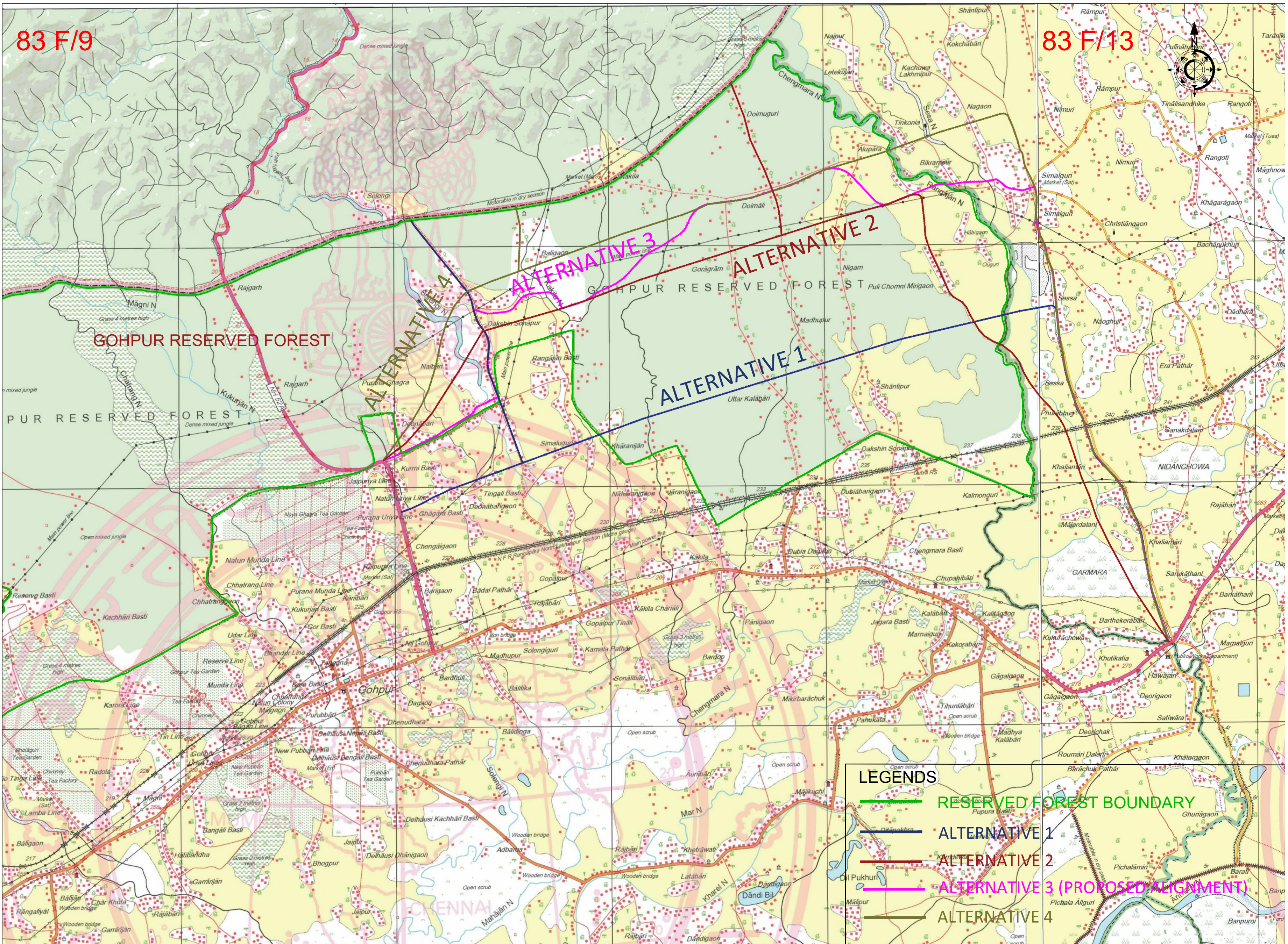
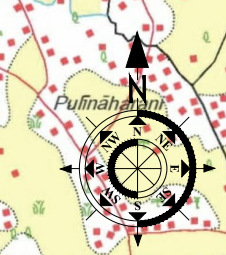


83 F/9

83 F/13



LEGENDS

RESERVED FOREST BOUNDARY

ALTERNATIVE 1

ALTERNATIVE 2

ALTERNATIVE 3 (PROPOSED ALIGNMENT)

ALTERNATIVE 4

30/11/2020

REV

DESCRIPTION

REV. ORIGINATOR

30/11/2020

REV

DESCRIPTION

REV. ORIGINATOR

NAME OF WORK PACKAGE NO.

EMPLOYER

APPROVAL BY COMPETENT AUTHORITY (EMPLOYER/ENGINEER)

IMPROVEMENT AND UPGRADATION OF GHAGARABASTI TO HAWAJAN (A28) UNDER AXOM MALA ASRIP/IMP/2019-20/GROUP 3

PUBLIC WORK ROAD DEPARTMENT, GOVERNMENT OF ASSAM

Approval by Competent Authority (Employer/Engineer)

DPR CONSULTANT:

FORTRESS

FORTRESS INFRACON LIMITED

Unit no.204, Lotus Park Neheru Nagar, Road No. 16, Wagle Industrial Estate, Thane West, Thane 400604

DESIGNED BY

DRAWN BY

CHECKED BY

APPROVED BY

M.D.

A.J.

A.K.

A.S.

SCALE:-

SHEET :-

1:750

A2

DWG. TITLE

DWG. NO.

SHEET NO.

MAP INDICATING LOCATION OF ALTERNATIVE EXAMINED

PWRD/ASOM MALA/ASRIP/AE/01

01 OF 01

REVISION STATUS

R0

31/12/2020
Asst. Executive Engineer, PWD
& Nodal Officer, Axom Mala
Office of the Chief Engineer, PWD (EAP)
Assam, Fatasil Ambri, Guwahati-25