

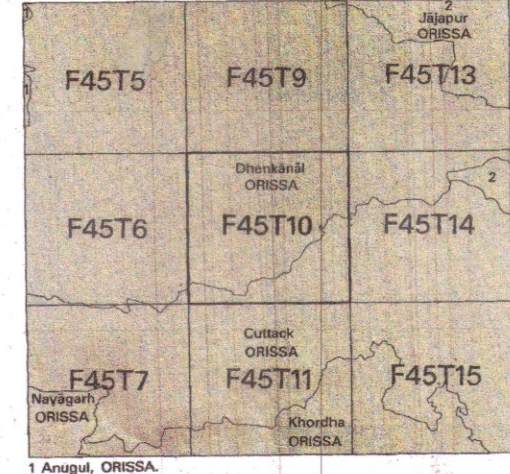


NOT FOR EXPORT

OPEN SERIES
MAP

No. F45T10 → 73H/10

Scale 1:50,000



भारतीय सर्वेक्षण विभाग
SURVEY OF INDIA
1st Edition 2009.

Price Rs. 70/-

CONVENTIONAL SYMBOLS

- Express highway with toll; with bridge with distance shown
- Roads, metalled: according to importance
- Roads, double carriageway: according to importance
- Unmetalled road, Cart track, Pack-track with steps, Foot-path
- Stream: with track in bed, unfordable, Canal
- Dam: masonry or rock-filled, earthwork, Weir
- River: dry with water channel, with island & rocks, Tidal
- Submerged rocks, Shoal, Swamp, Reeds
- Wells: lined, unlined, Tube-well, Spring, Tank, Perennial, dry
- Embankment: road or rail, bank, Broken ground
- Railways, broad gauge: double single with station, under construction
- Railways, other gauges: double single with station, do
- Mineral line or tramway, K.M. Cutting with tunnel
- Contours with sub-features, Rocky slopes, Cliffs
- Sand features: (1) flat, (2) sand-hills (permanent), (3) dunes (effluents)
- Towns or Villages: inhabited, deserted, Fort
- Religious: monastic, monastery, Tower, Ancestral
- Temple, Chhatra, Church, Mosque, Ghat, Tomb, Grave
- Lighthouse, Lightship, Buoy: lighted, unlighted, Ancestral
- Mine: View on hillside, Open shaft
- Power: pylon, other, Pylon, Control, Insulator, Other lines
- Ascent, outcrops, wooded, Surveyed line
- Boundary, international
- State: demarcated, undemarcated
- district, subdivision, taluk or taluk, forest
- Boundary pillars: surveyed, uncollected, Village, Inhabitant
- Height, triangulation, station, public, approximate
- Bench-mark: geodetic, tertiary, canal
- Post office, Telegraph office, Overhead tank
- Rest house or inspection bungalow, Chhatra house, Police station
- Camping ground, Forest: reserved, protected
- Spaced names: administrative locality or tribal
- Hospital, Dispensary, Veterinary hospital
- Aerodrome, Helipad, Tourist site
- Power line: with pylons surveyed, with poles unsurveyed

REFERENCES

AN 42 National Highway No. 42. PWD Public Works Department.

NOTES

Heights are in metres and above Indian mean sea level. Contours are approximate. A relative height, or, represents the approximate height, in metres, between the top and bottom of the steep slope. The triangulated heights and contours in this sheet have not been adjusted to the heights of the epoch-related bench-marks and may not be strictly in accordance with them. The exterior boundaries of areas of Reserved or Protected Forests are shown by green ribbons. Important buildings are shown in black with names. Head Pump is shown thus: ...

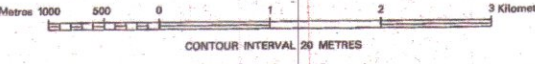
COMPILED INDEX

A. Compiled from 1:25,000 survey 1990-91. Updated for major details during 2005-06.

Projection - UTM Datum - WGS 84

Magnetic Variation from True North about 2° West in 2005. (Annual change negligible)

1:50,000



CONTOUR INTERVAL 30 METRES

For further details about this map, please contact

Director

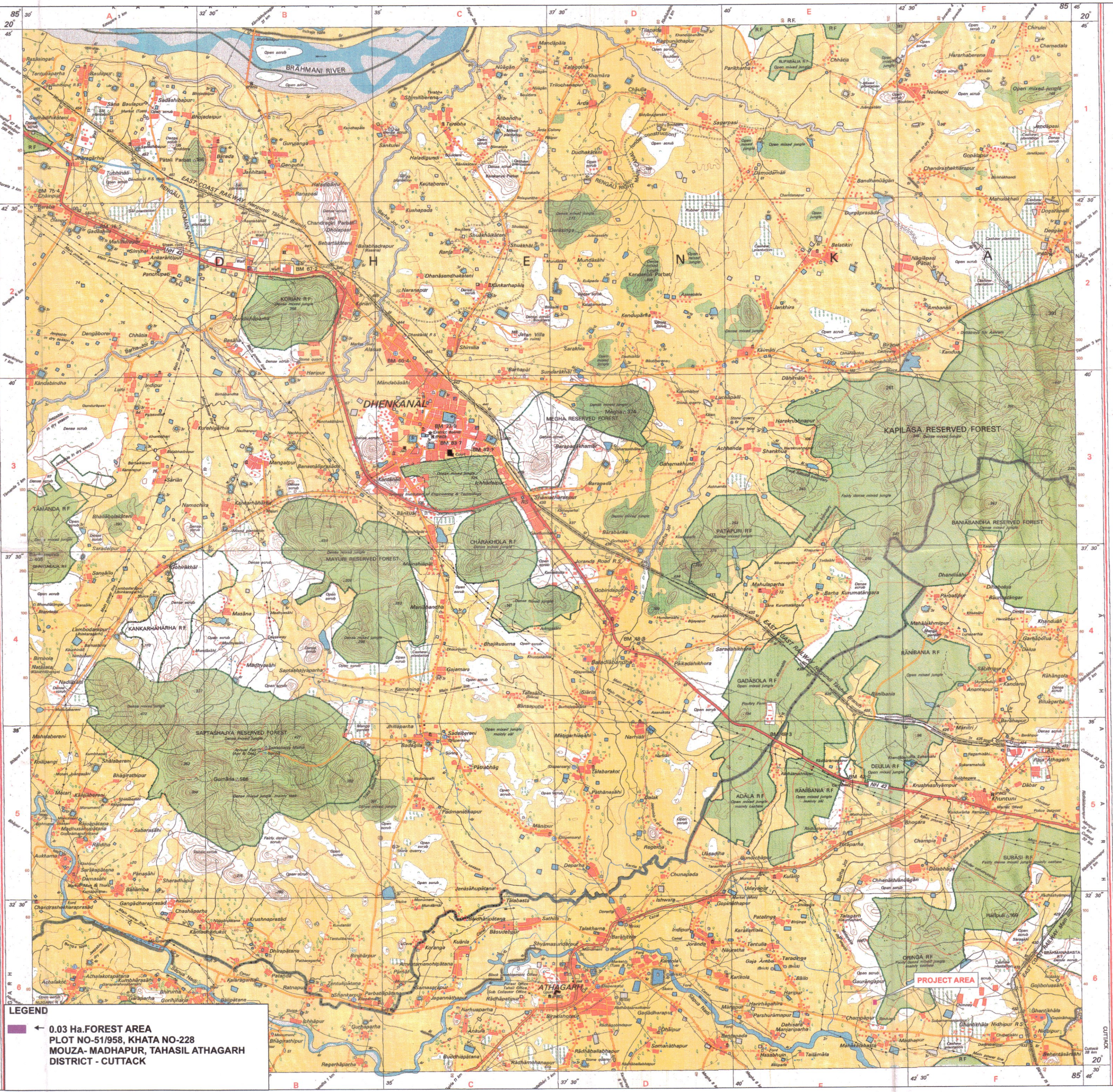
Orissa Geo-Spatial Data Centre

Survey of India

Survey Bhawan, PO - R R Laboratory

Bhubaneswar.

Fax : 0674 - 2301418



LEGEND
← 0.03 Ha. FOREST AREA
PLOT NO-51/958, KHATA NO-228
MOUZA- MADHAPUR, TAHASIL ATHAGARH
DISTRICT - CUTTACK

Forest Range Officer
Athagarh Range

Tahasildar,
Athagarh

For AARTI STEELS LIMITED
Bhubaneswar
(L.T.P. Nayagan)
President

