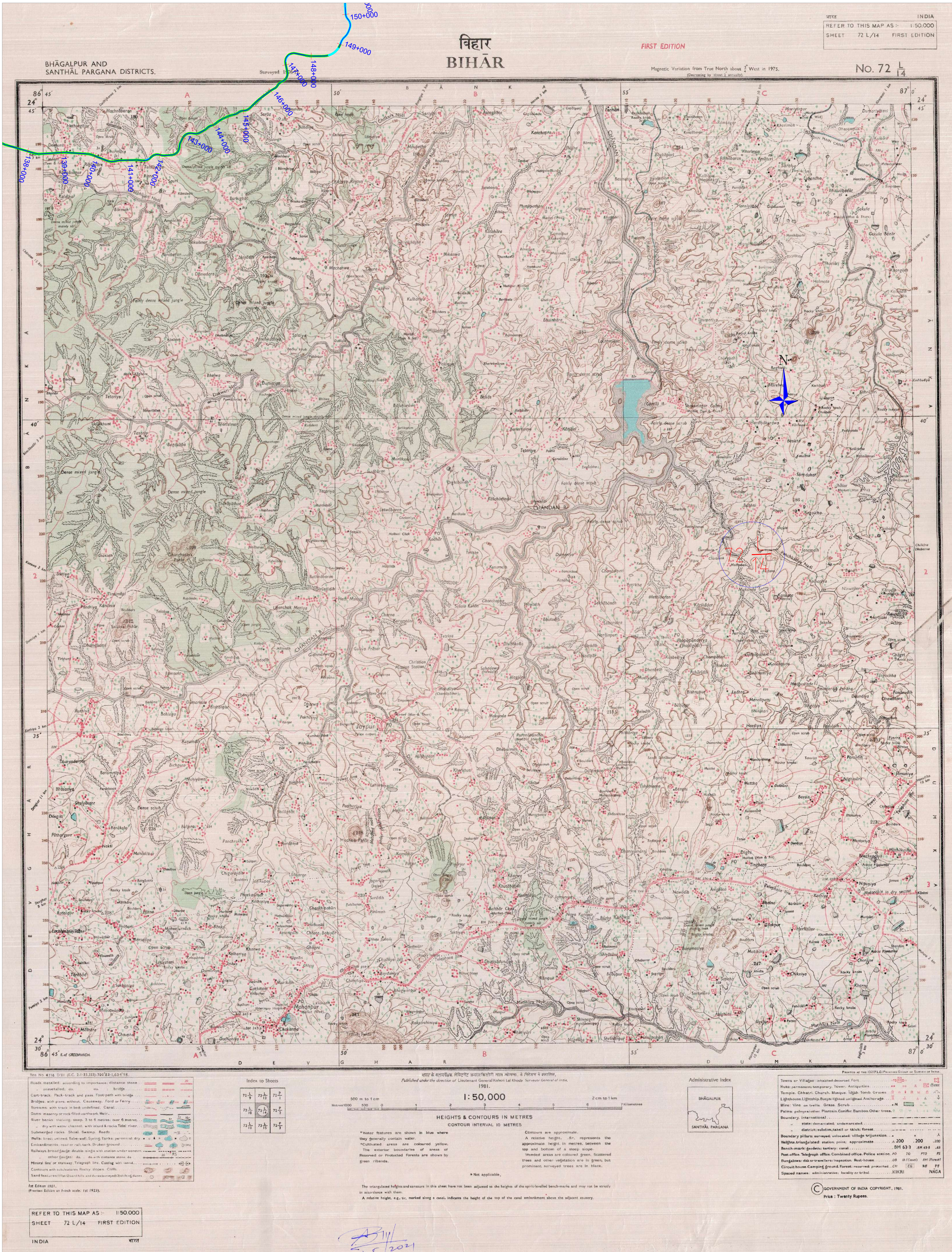
[illegible]

© GOVERNMENT OF INDIA COPYRIGHT, 1986.
Price : Sixteen Rupees.

INDIA भारत

STATUS:	DETAILED PROJECT REPORT		
PROJECT:	DETAILED PROJECT REPORT FOR UPGRADEMENT OF NATIONAL HIGHWAY (NH-333A) STARTING FROM ITS JUNCTION WITH NH-32 NEAR BAR BIGHA CONNECTING SHEKHUPURA - SIKANDRA - JAMALI, JHA - BANKA - PANJAWARA - BIHAR/RAJSHAHKAND BORDER IN THE STATE OF BIHAR TO TWOFOUR-ONE WITH PAVED SHOULDER (ROAD NO. 333A) (CONFIGURATION PACKAGE NO. UNANHE07)		
TITLE:	PF LAND SHOWING IN SOI MAP BANKA -DISTRICT (BANKA FOREST DIVISION)		
DRG NO:	FIP/L/HW/NH-333A/SM/01	REV. 0	SHEET 01 OF 04



<div><div><div>1km</div><div>500m</div><div>0</div><div>2km</div></div><div>KILOMETERS</div><div>SCALE : 1: 50000</div></div>				<div>LEGEND :</div> <div><div><div><div><div>Project Road (Existing)</div><div></div></div><div><div>Bypass / Realignment & Non Forest</div><div></div></div><div><div>Protected Forest Strip for Road Widening</div><div></div></div><div><div>Reserved Forest Strip for Road Widening</div><div></div></div></div><div><div><div><div><div>N. H. Division</div><div>Lakhisarai At. Munger</div></div><div></div><div>Ministry of Road Transport & Highways</div><div>Government of India</div></div></div></div></div></div>				<div><div>CONSULTANT:</div><div><div><div><div>FEEDBACK INFRA</div><div>Making Infrastructure + appear</div></div><div><div>Feedback Infra</div><div>Private Limited</div><div>15th Floor, Tower 9B</div><div>DLF Cyber City Phase-III,</div><div>Gurgaon 122 002</div></div></div></div><div><div>The information contained herein is Confidential & Property of Feedback Infra Private Limited and not for Publication. The Information is issued on the Understanding that no part thereof shall be Copied or Communicated to a Third Party without Authorization in Writing from Feedback Infra Private Limited</div></div></div>				<div><div>Drawn by:</div><div>D. J. </div><div>STATUS:</div><div>DETAILED PROJECT REPORT</div></div> <div><div>Designed by:</div><div>M. N. </div><div>PROJECT:</div><div>DETAILED PROJECT REPORT FOR UPGRADATION OF NATIONAL HIGHWAY (NH-333A) STARTING FROM ITS JUNCTION WITH NH-43 NEAR BAR BIGHA, CONNECTING SHEKHPURA, SONKAR, JAMUNAWARA, RAJA-BANGA, JAMUNAWARA - BIHAR/HARKHAND BORDER IN THE STATE OF BIHAR TO TWOFOUR LANE WITH PAVED SHOULDER CONSIDERED (PACKAGE NO. - NH/MS/07)</div></div> <div><div>Checked by:</div><div>P. R. </div><div>TITLE:</div><div>PF LAND SHOWING IN SOI MAP</div></div> <div><div>Approved By:</div><div>P. R. </div><div>DRG NO.:</div><div>FIPL/HW/NH-333A/SM/01</div></div> <div><div>Scale:</div><div>1:50000</div><div>Date:</div><div>May-2021</div><div>REV.:</div><div>02</div><div>SHEET:</div><div>02 OF 04</div></div>			
---	--	--	--	--	--	--	--	---	--	--	--	---	--	--	--

निर्वात के लिए नहीं NOT FOR EXPORT

बिहार
BIHAR

FIRST EDITION

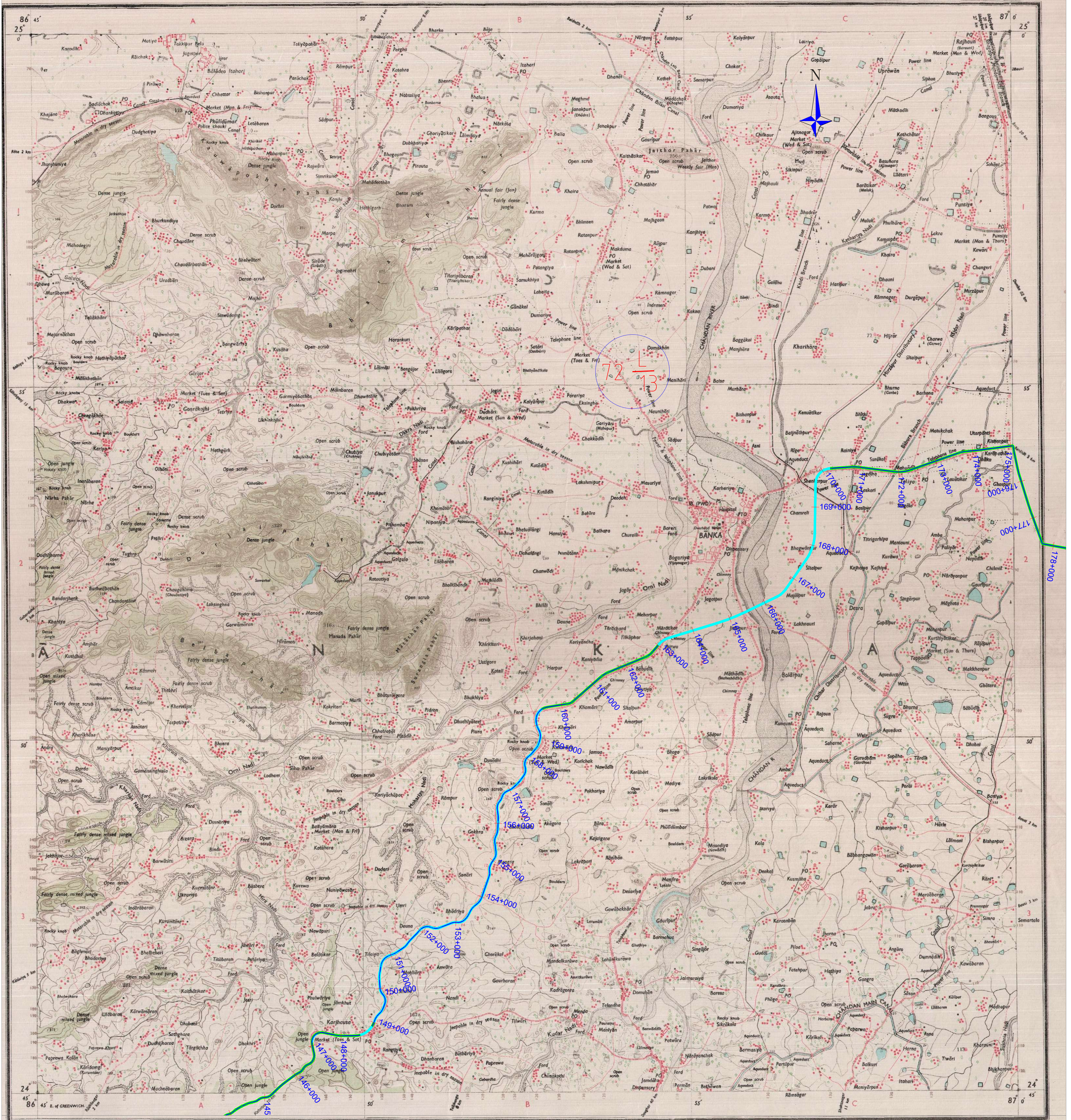
Magnetic Variation from True North about $\frac{1}{2}^{\circ}$ West in 1975.
(Decreasing by about $2'$ annually).

भारत INDIA
REFER TO THIS MAP AS : 1:50,000
SHEET 72 L/13 FIRST EDITION

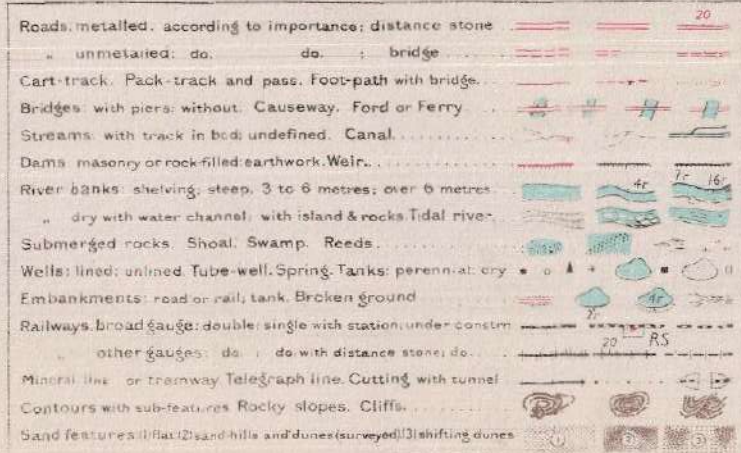
BHAGALPUR DISTRICT.

Surveyed 1976-77.

No. 72 $\frac{1}{13}$



Ref. No. 4690 D/86 (E.C. 2) 31.3333-700 E 1006' 97.3516' 1640.



Index to Sheets

72 $\frac{1}{13}$	72 $\frac{1}{14}$	72 $\frac{1}{15}$
72 $\frac{1}{16}$	72 $\frac{1}{17}$	72 $\frac{1}{18}$
72 $\frac{1}{19}$	72 $\frac{1}{20}$	72 $\frac{1}{21}$

भारत के नगरपालिका क्षेत्र जनसंख्या 2011 का नक्शा
Published under the direction of Major General Khushi Lal Khosla, Surveyor General of India, 1980.

1:50,000

HEIGHTS & CONTOURS IN METRES
CONTOUR INTERVAL 10 METRES

Water features are shown in blue where they generally contain water. Contained areas are coloured yellow. The exterior boundaries of areas of Reserved or Protected Forests are shown in green. Not applicable.

The kilometre scale numbers along roads and the railway are shown in blue type, e.g. 12 whereas kilometre numbers are shown in upright type, e.g. 12. All cart-racks along roads are possible in dry season. A relative height, e.g. 100, marked along a road indicates the height of the top of the road embankment above the adjacent country. Walls are numerous throughout the sheet; only the important ones have been shown. A relative height, e.g. 100, against a wall indicates its vertical depth in metres.

REFERENCES

E.R. Eastern Railway. P.W.D. Public Works Department.

Administrative Index

BHAGALPUR

Printed at the G.P.O. Printing Press, Government of India.
Town or Village: inhabited, uninhabited. Fort: permanent temporary. Temple: permanent temporary. Lightship: Lightship. Mine: one on the line. River: perennial, seasonal. Boundary: international, state, district, taluk, village. Boundary pillars: surveyed, uncoloured. Village: village. Height: triangulation, station, point, approximate. Bush mark: green, tertiary, canal. Post office: telegraph office, combined office, police station. P.O. (B) (C) (D) (E) (F) (G) (H) (I) (J) (K) (L) (M) (N) (O) (P) (Q) (R) (S) (T) (U) (V) (W) (X) (Y) (Z) (AA) (AB) (AC) (AD) (AE) (AF) (AG) (AH) (AI) (AJ) (AK) (AL) (AM) (AN) (AO) (AP) (AQ) (AR) (AS) (AT) (AU) (AV) (AW) (AX) (AY) (AZ) (BA) (BB) (BC) (BD) (BE) (BF) (BG) (BH) (BI) (BJ) (BK) (BL) (BM) (BN) (BO) (BP) (BQ) (BR) (BS) (BT) (BU) (BV) (BW) (BX) (BY) (BZ) (CA) (CB) (CC) (CD) (CE) (CF) (CG) (CH) (CI) (CJ) (CK) (CL) (CM) (CN) (CO) (CP) (CQ) (CR) (CS) (CT) (CU) (CV) (CW) (CX) (CY) (CZ) (DA) (DB) (DC) (DD) (DE) (DF) (DG) (DH) (DI) (DJ) (DK) (DL) (DM) (DN) (DO) (DP) (DQ) (DR) (DS) (DT) (DU) (DV) (DW) (DX) (DY) (DZ) (EA) (EB) (EC) (ED) (EE) (EF) (EG) (EH) (EI) (EJ) (EK) (EL) (EM) (EN) (EO) (EP) (EQ) (ER) (ES) (ET) (EU) (EV) (EW) (EX) (EY) (EZ) (FA) (FB) (FC) (FD) (FE) (FF) (FG) (FH) (FI) (FJ) (FK) (FL) (FM) (FN) (FO) (FP) (FQ) (FR) (FS) (FT) (FU) (FV) (FW) (FX) (FY) (FZ) (GA) (GB) (GC) (GD) (GE) (GF) (GG) (GH) (GI) (GJ) (GK) (GL) (GM) (GN) (GO) (GP) (GQ) (GR) (GS) (GT) (GU) (GV) (GW) (GX) (GY) (GZ) (HA) (HB) (HC) (HD) (HE) (HF) (HG) (HH) (HI) (HJ) (HK) (HL) (HM) (HN) (HO) (HP) (HQ) (HR) (HS) (HT) (HU) (HV) (HW) (HX) (HY) (HZ) (IA) (IB) (IC) (ID) (IE) (IF) (IG) (IH) (II) (IJ) (IK) (IL) (IM) (IN) (IO) (IP) (IQ) (IR) (IS) (IT) (IU) (IV) (IW) (IX) (IY) (IZ) (JA) (JB) (JC) (JD) (JE) (JF) (JG) (JH) (JI) (JJ) (JK) (JL) (JM) (JN) (JO) (JP) (JQ) (JR) (JS) (JT) (JU) (JV) (JW) (JX) (JY) (JZ) (KA) (KB) (KC) (KD) (KE) (KF) (KG) (KH) (KI) (KJ) (KL) (KM) (KN) (KO) (KP) (KQ) (KR) (KS) (KT) (KU) (KV) (KW) (KX) (KY) (KZ) (LA) (LB) (LC) (LD) (LE) (LF) (LG) (LH) (LI) (LJ) (LK) (LL) (LM) (LN) (LO) (LP) (LQ) (LR) (LS) (LT) (LU) (LV) (LW) (LX) (LY) (LZ) (MA) (MB) (MC) (MD) (ME) (MF) (MG) (MH) (MI) (MJ) (MK) (ML) (MM) (MN) (MO) (MP) (MQ) (MR) (MS) (MT) (MU) (MV) (MW) (MX) (MY) (MZ) (NA) (NB) (NC) (ND) (NE) (NF) (NG) (NH) (NI) (NJ) (NK) (NL) (NM) (NN) (NO) (NP) (NQ) (NR) (NS) (NT) (NU) (NV) (NW) (NX) (NY) (NZ) (OA) (OB) (OC) (OD) (OE) (OF) (OG) (OH) (OI) (OJ) (OK) (OL) (OM) (ON) (OO) (OP) (OQ) (OR) (OS) (OT) (OU) (OV) (OW) (OX) (OY) (OZ) (PA) (PB) (PC) (PD) (PE) (PF) (PG) (PH) (PI) (PJ) (PK) (PL) (PM) (PN) (PO) (PP) (PQ) (PR) (PS) (PT) (PU) (PV) (PW) (PX) (PY) (PZ) (QA) (QB) (QC) (QD) (QE) (QF) (QG) (QH) (QI) (QJ) (QK) (QL) (QM) (QN) (QO) (QP) (QQ) (QR) (QS) (QT) (QU) (QV) (QW) (QX) (QY) (QZ) (RA) (RB) (RC) (RD) (RE) (RF) (RG) (RH) (RI) (RJ) (RK) (RL) (RM) (RN) (RO) (RP) (RQ) (RR) (RS) (RT) (RU) (RV) (RW) (RX) (RY) (RZ) (SA) (SB) (SC) (SD) (SE) (SF) (SG) (SH) (SI) (SJ) (SK) (SL) (SM) (SN) (SO) (SP) (SQ) (SR) (SS) (ST) (SU) (SV) (SW) (SX) (SY) (SZ) (TA) (TB) (TC) (TD) (TE) (TF) (TG) (TH) (TI) (TJ) (TK) (TL) (TM) (TN) (TO) (TP) (TQ) (TR) (TS) (TT) (TU) (TV) (TW) (TX) (TY) (TZ) (UA) (UB) (UC) (UD) (UE) (UF) (UG) (UH) (UI) (UJ) (UK) (UL) (UM) (UN) (UO) (UP) (UQ) (UR) (US) (UT) (UU) (UV) (UW) (UX) (UY) (UZ) (VA) (VB) (VC) (VD) (VE) (VF) (VG) (VH) (VI) (VJ) (VK) (VL) (VM) (VN) (VO) (VP) (VQ) (VR) (VS) (VT) (VU) (VV) (VW) (VX) (VY) (VZ) (WA) (WB) (WC) (WD) (WE) (WF) (WG) (WH) (WI) (WJ) (WK) (WL) (WM) (WN) (WO) (WP) (WQ) (WR) (WS) (WT) (WU) (WV) (WW) (WX) (WY) (WZ) (XA) (XB) (XC) (XD) (XE) (XF) (XG) (XH) (XI) (XJ) (XK) (XL) (XM) (XN) (XO) (XP) (XQ) (XR) (XS) (XT) (XU) (XV) (XW) (XX) (XY) (XZ) (YA) (YB) (YC) (YD) (YE) (YF) (YG) (YH) (YI) (YJ) (YK) (YL) (YM) (YN) (YO) (YP) (YQ) (YR) (YS) (YT) (YU) (YV) (YW) (YX) (YY) (YZ) (ZA) (ZB) (ZC) (ZD) (ZE) (ZF) (ZG) (ZH) (ZI) (ZJ) (ZK) (ZL) (ZM) (ZN) (ZO) (ZP) (ZQ) (ZR) (ZS) (ZT) (ZU) (ZV) (ZW) (ZX) (ZY) (ZZ)

GOVERNMENT OF INDIA COPYRIGHT, 1980.
Price: Twenty Rupees.

REFER TO THIS MAP AS : 1:50,000
SHEET 72 L/13 FIRST EDITION

INDIA भारत

REV.	DATE	DESCRIPTION OF REVISIONS	BY

LEGEND :
Project Road (Existing)
Bypass / Realignment
and Non Forest
Protected Forest Strip for
Road Widening
Reserved Forest Strip for
Road Widening

Ministry of Road Transport & Highways
Government of India

CONSULTANT:
FEEDBACK INFRA
Feedback Infra
Private Limited
15th Floor, Tower 9B
DLF Cyber City Phase-II
Gurgaon 122 002

Drawn by: D.J.
Designed by: M.N.
Checked by: R.M.
Approved By: P.R.
Scale: 1:50000
Date: May-2021

STATUS: DETAILED PROJECT REPORT
PROJECT: DETAILED PROJECT REPORT FOR UPGRADATION OF NATIONAL HIGHWAY
NH-333A STARTING FROM ITS JUNCTION WITH NH-33 NEAR BAR BIGHA
CONNECTING SHEHPURA, SIKANDRA, JAMUI JHA JHA, BANGA, PANJAWARA
BANGA JHARKHAND BORDER IN THE STATE OF BIHAR TO TWOFOUR LANE
WITH PAVED SHOULDER CONFIGURATION (PACKAGE NO - NH/46/37)
TITLE: PF LAND SHOWING IN SOI MAP
BANKA -DISTRICT (BANKA FOREST DIVISION)
DRG NO.: FIP/HW/NH-333A/SM/01
REV. 0
SHEET: 03 OF 04



निर्यात के लिए नहीं NOT FOR EXPORT

OPEN SERIES
MAP

No. G45V1

Scale 1:50,000

G45O16 (72K/16)	G45P4 (72K/4)	G45P8 (72K/8)
G45U13 (72P/13)	G45V1 (72P/1)	G45V5 (72P/5)
G45U74 (72L/4)	G45V2 (72P/2)	G45V6 (72P/6)

1 Sahibganj, JHARKHAND.
2 Pakur, JHARKHAND.

भारतीय सर्वेक्षण विभाग

SURVEY OF INDIA

1st Edition 2010.

Price: ₹ 70/-

CONVENTIONAL SYMBOLS



REFERENCES

SI Eastern Railway PWD Public Works Department

NOTES :-

A relative height, -B, represents the approximate height, in metres, between the top and bottom of a steep slope.
The state boundary between Bihar and Jharkhand States has been entered as per information provided in the Bihar Reorganisation Act 2000, but has not been verified by the Government concerned.
The kilometre numbers along roads and railways are shown in short type e.g., '5' whereas railway numbers are shown in upright type e.g., '5'.

COMPILATION INDEX

A Surveyed during 1950-55. Updated for major details during 2008-09.

Projection - UTM Datum - WGS 84

Magnetic Variation from True North about 1/4° West in 2005.

(Annual change negligible).

Scale 1:50,000

For further details about this map, please contact

Director

Bihar Geo-Spatial Data Centre

Survey of India, 164, Sheikhpura House, Sheikhpura

Patna - 800014.

Fax : 0612- 2296265

WEBSITE - www.surveyofindia.gov.in

Reproduction in whole or part by any means is prohibited without the written permission of Survey of India, the National Mapping Agency.



REG. No. -WGS 84 (Bihar) CDC-150200-

PRINTED AT THE WESTERN PRINTING GROUP OF SURVEY OF INDIA.

LEGEND :

Project Road (Existing)
Bypass / Realignment
& Non Forest
Protected Forest Strip for
Road Widening
Reserved Forest Strip for
Road Widening

Executive Engineer
N.H. Division
Lakhisarai At: Munger



Ministry of Road Transport & Highways
Government of India

CLIENT:
CONSULTANT:
Feedback Infra
Private Limited
15th Floor, Tower 9B
DLF Cyber City Phase-III,
Gurgaon 122 002

The information contained herein is Confidential & Property of Feedback Infra Private Limited and not for Publication. The information is issued on the understanding that no part thereof shall be Copied or Communicated to a Third Party without Authorization in Writing from Feedback Infra Private Limited

Drawn by: D.J.
Designed by: M.N.
Checked by: R.M.
Approved By: P.R.
Scale: 1:50000
Date: May-2021

STATUS: DETAILED PROJECT REPORT
PROJECT: DETAILED PROJECT REPORT FOR UPGRADATION OF NATIONAL HIGHWAY (NH-333A) STARTING FROM ITS JUNCTION WITH NH-33 NEAR BAR BIGHA CONNECTING SHEKHPURA - SIKANDRA - JAMUI JHA JHA - BANKA - PANJANANA - BHARUAGHARH BORDER IN THE STATE OF BIHAR TO TWO LANE WITH PAVED SHOULDER CONFIGURATION (PACKAGE NO - NHIAE/37)
TITLE: PF LAND SHOWING IN SOI MAP
BANKA -DISTRICT (BANKA FOREST DIVISION)
DRG NO.: FIPLIWHNH-333A/SM01
REV: 0
SHEET: 04 OF 04