



OPEN SERIES
MAP
No. D43V10
Scale 1:50,000

D43V5 (48P/5)	D43V9 (48P/9)	D43V13 (48P/13)
Dakshina Kannada KARNATAKA	D43V10 (48P/10)	D43V14 (48P/14)
D43V6 (48P/6)	D43V11 (48P/11)	D43V15 (48P/15)
D43V7 (48P/7)	Kodagu KARNATAKA	
Kannur KERALA		

ಸುಳ್ಯ ತಾಲೂಕು ಸುಬ್ರಹ್ಮಣ್ಯ ಗ್ರಾಮದ
ಸರ್ವೆ ನಂ. 121
(ಟೋಪೋಗ್ರಾಫಿಕ್ ನಂ. 48)
ಕಿರು ಮೀಸಲು ಅರಣ್ಯದ
ಕುಮಾರಧಾರ
ಎಂಬಲ್ಲಿ ಸೇತುವೆ ನಿರ್ಮಾಣಕ್ಕಾಗಿ
ಅಪೇಕ್ಷಿಸಿದ 0.16 ಹೆಕ್ಟೇರ್ ಸ್ಥಳವನ್ನು
ಗುರುತಿಸಿರುವುದು.
Scale : 1:50,000

भारतीय सर्वेक्षण विभाग
1st Edition 2010. Price: Rs. 70/-
SURVEY OF INDIA

CONVENTIONAL SYMBOLS



NOTES :-

Heights are in metres and above Indian mean sea level.
Contours are approximate.
A relative height, e.g., 100, represents the approximate height, in metres, between the top and bottom of a steep slope.
Unmetalled roads, against which there are no remarks, and most of the cart-tracks are passable in dry season.
The kilometre stone numbers along roads are shown in slant type, e.g., 5' whereas milestone numbers are shown in upright type, e.g., 5.
Forest boundary in this sheet is not shown for want of reliable information.

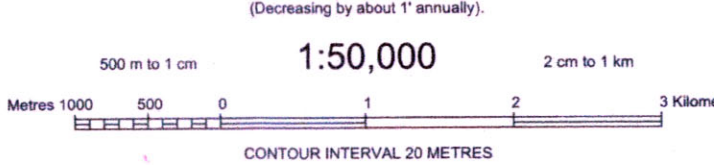
COMPILATION INDEX

A Surveyed during 1968-69. Updated for major details during year 2006-07.



Projection - UTM Datum - WGS 84

Magnetic Variation from True North about 2° West in 2005.
(Decreasing by about 1" annually).

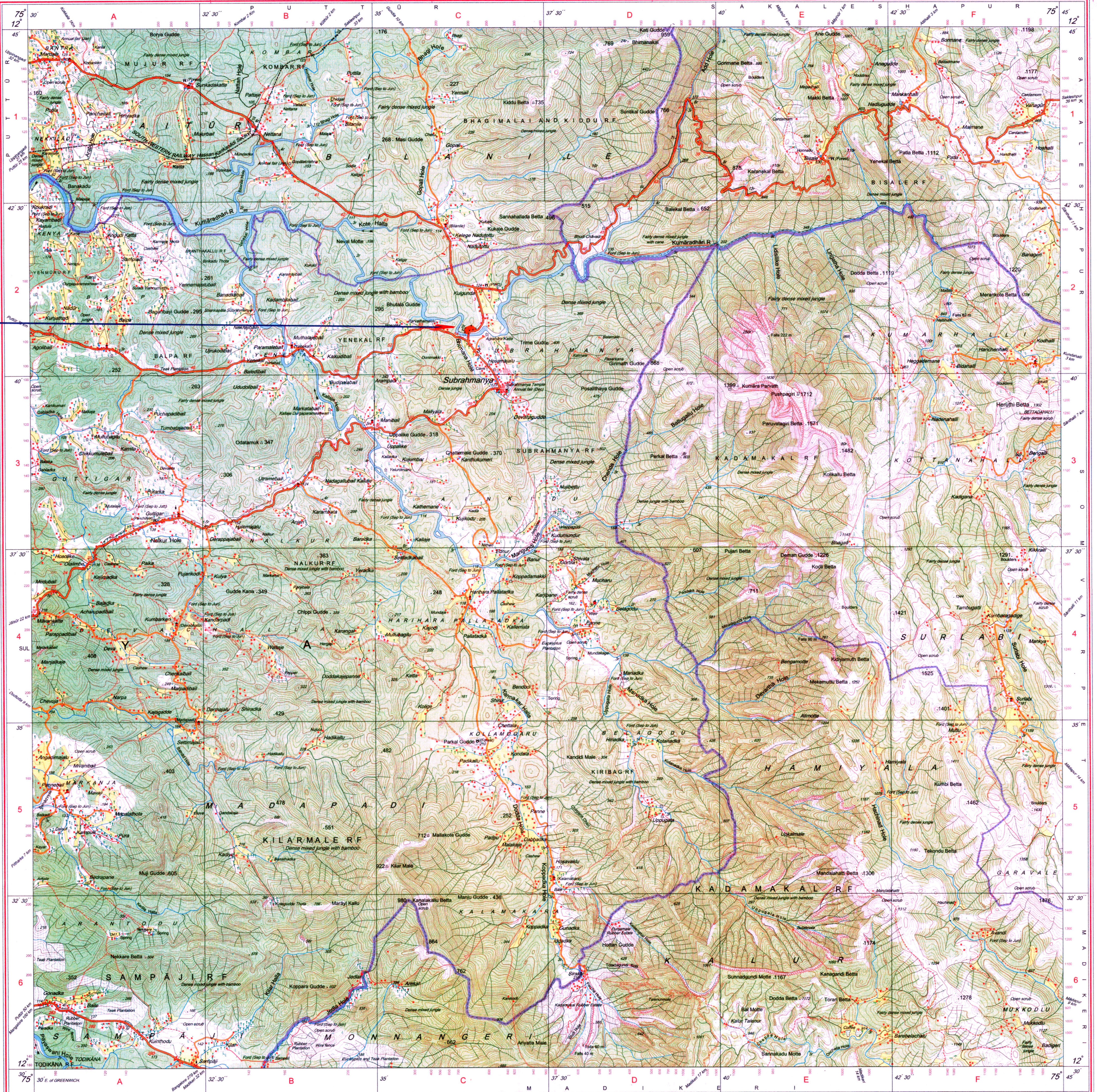


For further details about this map, please contact
Director
Karnataka Geo-Spatial Data Centre
Survey of India, Koramangala II Block
Bangalore.

WEBSITE - www.surveyofindia.gov.in

Reproduction in whole or part by any means is prohibited
without the written permission of Survey of India, the
National Mapping Agency.

GOVERNMENT OF INDIA COPYRIGHT 2010.



REG. No. 9587-SPG D-11 (Karnataka GDC-1:50,000-1513)

भारत के सर्वेक्षण विभाग, सर्वेक्षण विभाग, दिल्ली, के निर्देशानुसार प्रकाशित।
Published under the direction of Swarna Subba Rao, B.E., Surveyor General of India,
Survey of India, HMT Banku Estate, Post Box No. 37, Dehra Dun - 248001 (Uttarakhand),
Department of Science & Technology, Government of India.

PRINTED AT THE SOUTHERN PRINTING GROUP OF SURVEY OF INDIA.