

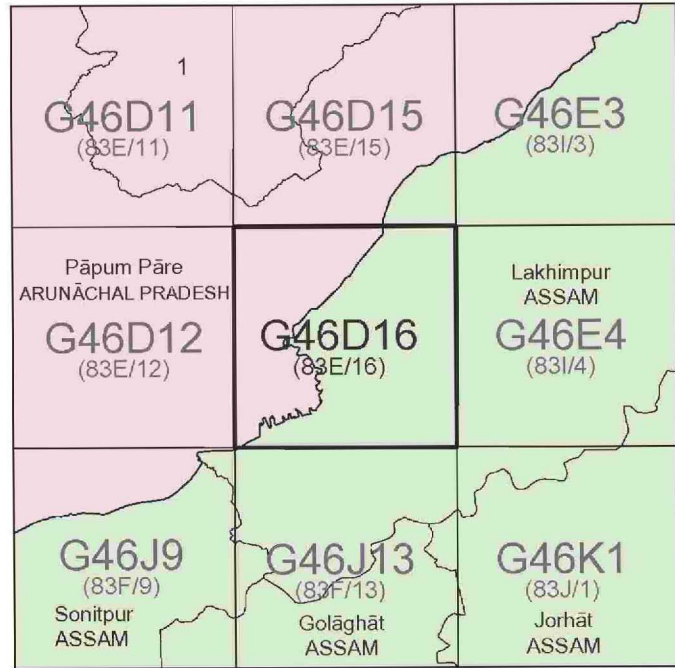
SOI TOPOSHEET SHOWING THE FOREST AREA PROPOSED TO BE DIVERTED FOR 132 KV D/C PARE HEP TO NORTH LAKHIMPUR TRANSMISSION LINE UNDER LAKHIMPUR FOREST DIVISION (SCALE:-1:50,000)



OPEN SERIES MAP

No. G46D16

Scale 1:50,000



1 Lower Subansiri, ARUNACHAL PRADESH.

भारतीय सर्वेक्षण विभाग SURVEY OF INDIA

1st Edition 2011.

Price: Rs. 77/-

CONVENTIONAL SYMBOLS



REFERENCES  
NH 52 National Highway No. 52  
B08 Bamboo bridge.

NOTES:-

Heights and contours have not been shown.  
A relative height, e.g., 40, represents the approximate height, in metres, between the top and bottom of a steep slope.  
The inter state boundary between Arunachal Pradesh and Assam states shown on this map is as interpreted from the North Eastern Areas (Reorganisation) Act, 1971, but has yet to be verified.  
Names and boundaries of subdivisions or district of Arunachal Pradesh have not been shown for want of reliable information.  
Unsettled roads inside the tea gardens are not shown throughout the year, permission to use those is required from the Tea Garden authorities.  
Jail or temporary cultivated areas occur throughout the jungle, they are normally abandoned after 2-3 years and are not shown.  
Bamboo trees are shown thus.

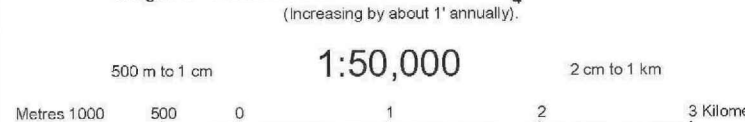
COMPILATION INDEX

A. Surveyed during 1977-78. Updated for major details during 2005-06.



Projection - UTM Datum - WGS 84

Magnetic Variation from True North about 1° West in 2005.



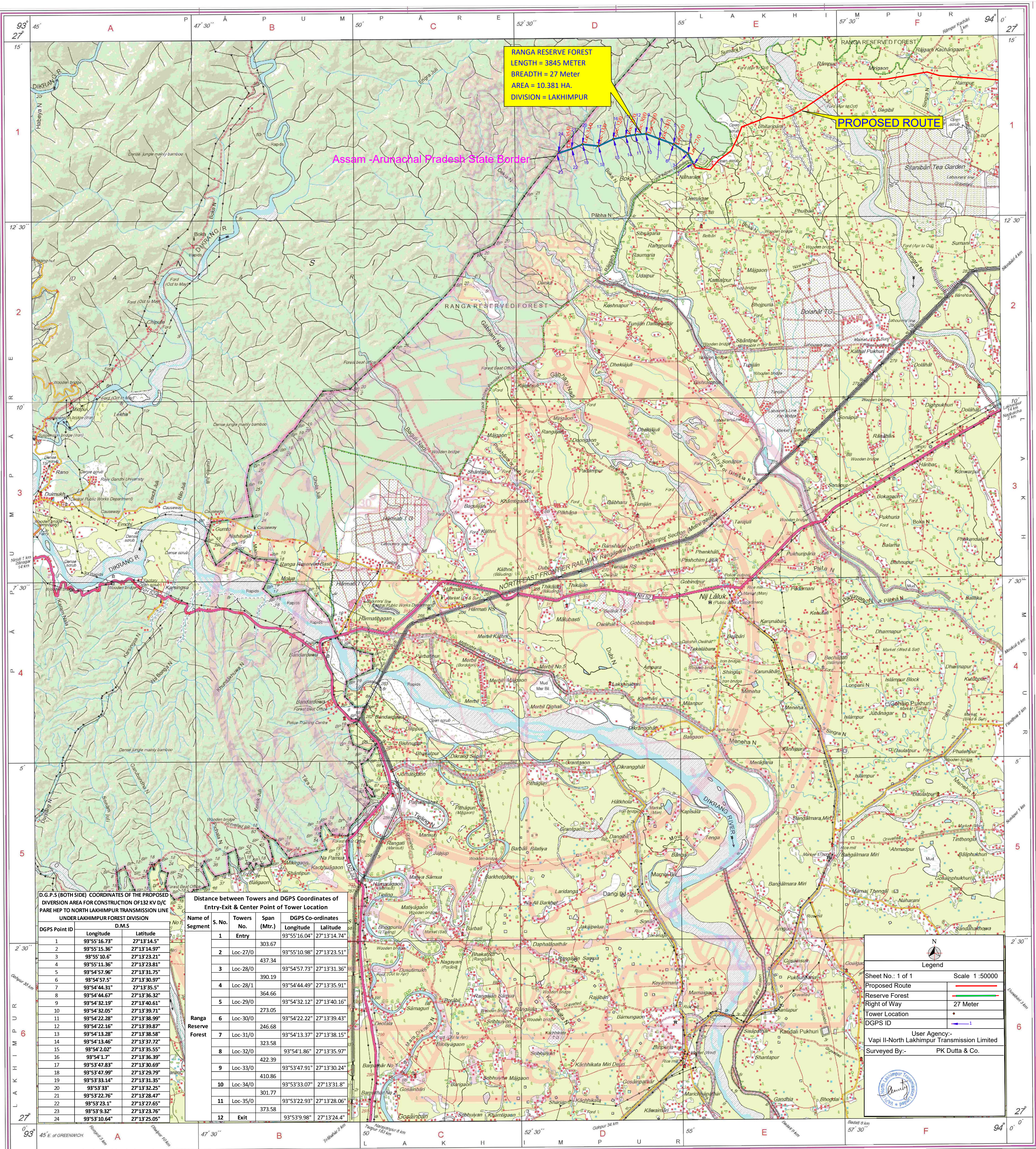
For further details about this map, please contact

Director  
Meghalaya & Arunachal Pradesh Geo-Spatial Data Centre  
Survey of India, Malki  
Shillong.

WEBSITE - www.surveyofindia.gov.in

Reproduction in whole or part by any means is prohibited without the written permission of Survey of India, the National Mapping Agency.

GOVERNMENT OF INDIA COPYRIGHT, 2011.



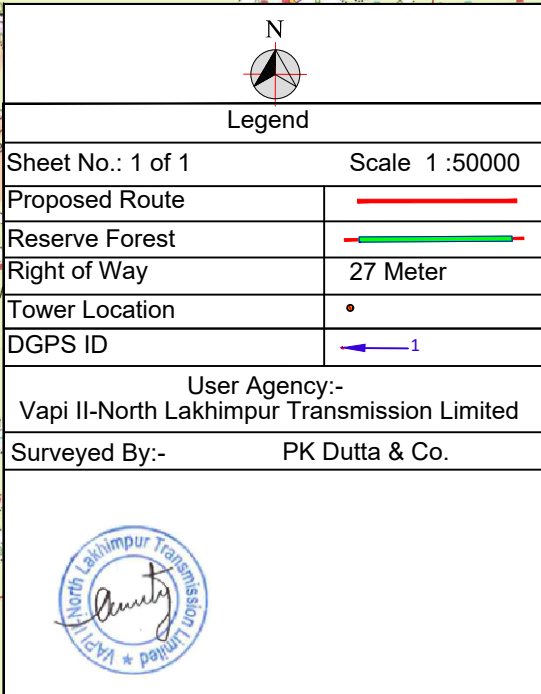
RANGA RESERVE FOREST  
LENGTH = 3845 METER  
BREADTH = 27 Meter  
AREA = 10.381 HA.  
DIVISION = LAKHIMPUR

PROPOSED ROUTE

Assam - Arunachal Pradesh State Border

D.G.P.S. (BOTH SIDES) COORDINATES OF THE PROPOSED DIVERSION AREA FOR CONSTRUCTION OF 132 KV D/C PARE HEP TO NORTH LAKHIMPUR TRANSMISSION LINE UNDER LAKHIMPUR FOREST DIVISION			
DGPS Point ID	Longitude	Latitude	D.M.S
1	93°55'16.75"	27°13'14.55"	
2	93°55'15.36"	27°13'14.97"	
3	93°55'10.6"	27°13'23.21"	
4	93°55'11.36"	27°13'23.81"	
5	93°54'57.96"	27°13'31.75"	
6	93°54'51.5"	27°13'30.97"	
7	93°54'44.31"	27°13'35.5"	
8	93°54'44.67"	27°13'36.32"	
9	93°54'32.19"	27°13'40.61"	
10	93°54'32.05"	27°13'39.71"	
11	93°54'22.28"	27°13'38.99"	
12	93°54'22.16"	27°13'39.87"	
13	93°54'13.28"	27°13'38.58"	
14	93°54'13.46"	27°13'37.72"	
15	93°54'2.02"	27°13'35.55"	
16	93°54'1.7"	27°13'36.39"	
17	93°53'47.83"	27°13'30.69"	
18	93°53'47.99"	27°13'29.79"	
19	93°53'33.14"	27°13'31.35"	
20	93°53'33"	27°13'32.25"	
21	93°53'22.76"	27°13'28.47"	
22	93°53'23.1"	27°13'27.65"	
23	93°53'9.32"	27°13'23.76"	
24	93°53'10.64"	27°13'25.05"	

Distance between Towers and DGPS Coordinates of Entry-Exit & Center Point of Tower Location			
Name of Segment	S. No.	Towers No.	Span (Mtr.)
1	Entry		
2	Loc-27/0		303.67
3	Loc-28/0		437.34
4	Loc-28/1		390.19
5	Loc-29/0		364.66
6	Loc-30/0		273.05
7	Loc-31/0		246.68
8	Loc-32/0		323.58
9	Loc-33/0		422.39
10	Loc-34/0		410.86
11	Loc-35/0		301.77
12	Exit		373.58



User Agency:-  
Vapi II-North Lakhimpur Transmission Limited  
Surveyed By:- PK Dutta & Co.



REG. No. P D F - WPS D11 (M. & A.P.) GDC-155/003.

भारत के सर्वेक्षक, सर्वेक्षण विभाग, भारत, के निर्देशन में प्रकाशित,  
Published under the direction of Swarna Subba Rao, B.E. Surveyor General of India,  
Survey of India, Hithibarkala Estate, Post Box No. 37, Dehra Dun-248001 (Uttarakhand),  
Department of Science & Technology, Government of India.

PRINTED AT THE WESTERN PRINTING GROUP OF SURVEY OF INDIA.