

CHHATTISGARH BHARATNET PHASE II PROJECT
MAP SHOWING PROPOSED OFC ROUTE PASSING THROUGH FOREST PATCHES WITHIN KORBA FOREST DIVISION,
BLOCK - KARTALA, DISTRICT - KORBA, C.G.

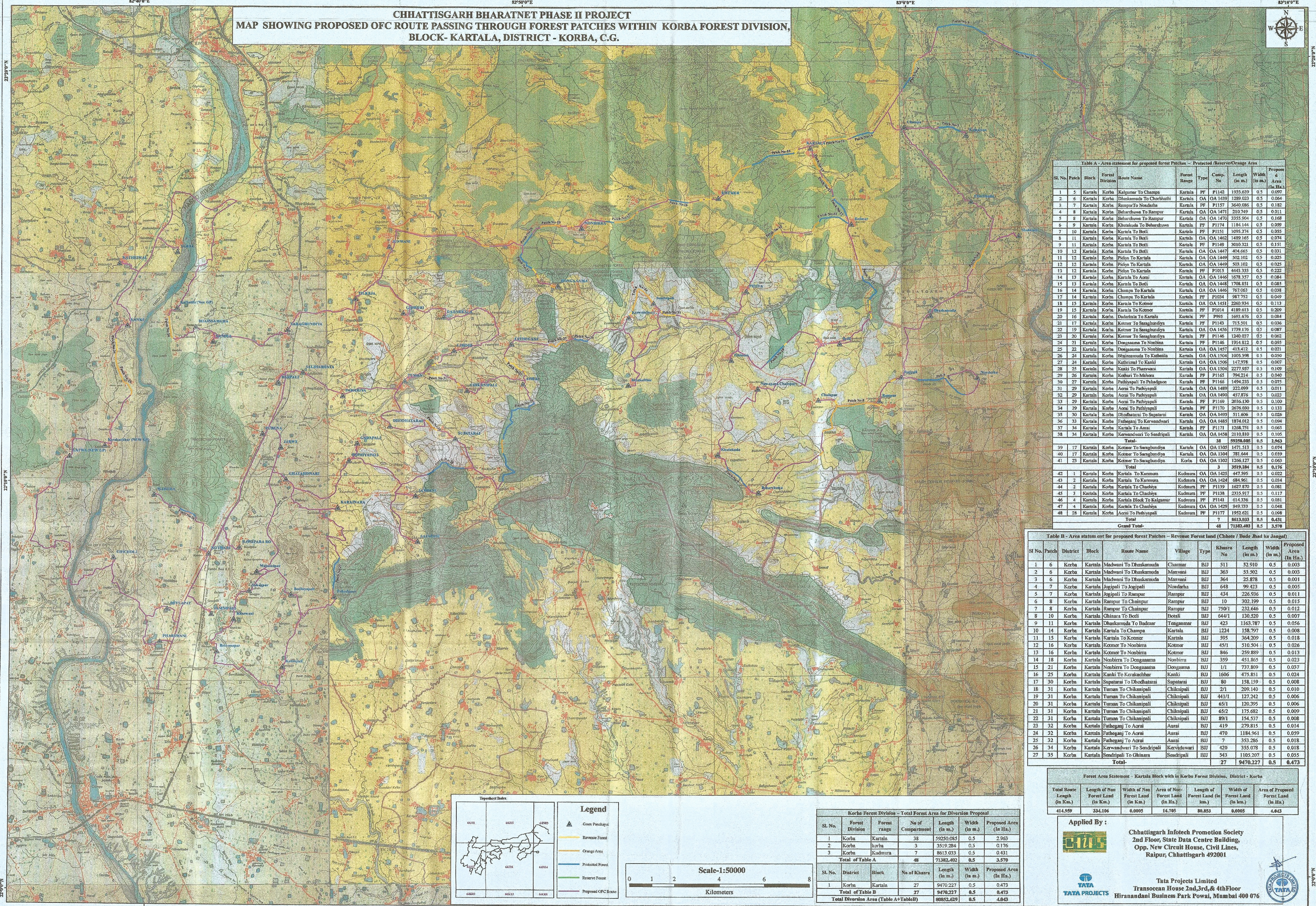


Table A - Area statement for proposed forest Patches - Protected/Reserve/Orange Area

Sl. No.	Patch	Block	Forest Division	Route Name	Forest Type	Comp. No.	Length (in m.)	Width (in m.)	Proposed Area (in Ha.)	
1	5	Korba	Korba	Kalgamar To Champa	Kartala	PP	1142	1935.639	0.5	0.097
2	6	Korba	Korba	Dhalsamuda To Choribathi	Kartala	OA	1439	1289.023	0.5	0.064
3	7	Korba	Korba	Rampur To Noudarha	Kartala	PP	1157	3640.086	0.5	0.182
4	8	Korba	Korba	Baharhawa To Rampur	Kartala	OA	1471	212.749	0.5	0.011
5	8	Korba	Korba	Baharhawa To Rampur	Kartala	OA	1470	3355.904	0.5	0.168
6	9	Korba	Korba	Khalsala To Bahardhawa	Kartala	PP	1174	1184.144	0.5	0.059
7	10	Korba	Korba	Kartala To Boli	Kartala	PP	1151	1095.374	0.5	0.055
8	11	Korba	Korba	Kartala To Boli	Kartala	OA	1462	1489.165	0.5	0.074
9	11	Korba	Korba	Kartala To Boli	Kartala	PP	1149	3010.326	0.5	0.151
10	12	Korba	Korba	Kartala To Boli	Kartala	OA	1447	404.665	0.5	0.021
11	12	Korba	Korba	Pdiya To Kartala	Kartala	OA	1449	302.102	0.5	0.025
12	12	Korba	Korba	Pdiya To Kartala	Kartala	OA	1449	303.102	0.5	0.025
13	12	Korba	Korba	Pdiya To Kartala	Kartala	PP	1105	4443.335	0.5	0.223
14	13	Korba	Korba	Kartala To Komer	Kartala	OA	1446	1678.357	0.5	0.084
15	13	Korba	Korba	Kartala To Boli	Kartala	OA	1448	1708.851	0.5	0.085
16	14	Korba	Korba	Champa To Kartala	Kartala	OA	1446	767.065	0.5	0.038
17	14	Korba	Korba	Champa To Kartala	Kartala	PP	1104	987.752	0.5	0.049
18	15	Korba	Korba	Kartala To Komer	Kartala	OA	1451	2260.934	0.5	0.113
19	15	Korba	Korba	Kartala To Komer	Kartala	PP	1104	4189.013	0.5	0.209
20	16	Korba	Korba	Dadarhala To Kartala	Kartala	PP	1095	1693.676	0.5	0.084
21	17	Korba	Korba	Kotmer To Sangundhya	Kartala	PP	1143	715.501	0.5	0.036
22	19	Korba	Korba	Kotmer To Sangundhya	Kartala	OA	1456	1739.176	0.5	0.087
23	20	Korba	Korba	Kotmer To Sangundhya	Kartala	PP	1146	1240.037	0.5	0.062
24	21	Korba	Korba	Dongasama To Noubira	Kartala	PP	1146	1314.312	0.5	0.065
25	22	Korba	Korba	Dongasama To Noubira	Kartala	OA	1457	413.412	0.5	0.021
26	24	Korba	Korba	Dhalsamuda To Kankia	Kartala	OA	1504	1005.598	0.5	0.050
27	24	Korba	Korba	Kankia To Pagarwari	Kartala	OA	1506	147.978	0.5	0.007
28	25	Korba	Korba	Kanki To Pagarwari	Kartala	OA	1504	2277.927	0.5	0.109
29	26	Korba	Korba	Kotmer To Noubira	Kartala	PP	1165	794.214	0.5	0.040
30	27	Korba	Korba	Pathaganj To Pathaganj	Kartala	PP	1166	1494.233	0.5	0.075
31	29	Korba	Korba	Aurai To Pathaganj	Kartala	OA	1489	222.099	0.5	0.011
32	29	Korba	Korba	Aurai To Pathaganj	Kartala	OA	1490	457.876	0.5	0.023
33	29	Korba	Korba	Aurai To Pathaganj	Kartala	PP	1169	2036.140	0.5	0.100
34	29	Korba	Korba	Aurai To Pathaganj	Kartala	PP	1170	2676.980	0.5	0.133
35	30	Korba	Korba	Dhodhatrai To Supatari	Kartala	OA	1495	511.806	0.5	0.026
36	33	Korba	Korba	Pathaganj To Karwandwari	Kartala	OA	1485	1874.012	0.5	0.094
37	34	Korba	Korba	Karwandwari To Aurai	Kartala	PP	1171	1268.751	0.5	0.063
38	34	Korba	Korba	Karwandwari To Sandripali	Kartala	OA	1488	2110.810	0.5	0.105
39	17	Korba	Korba	Kotmer To Sangundhya	Kartala	OA	1305	1471.513	0.5	0.074
40	17	Korba	Korba	Kotmer To Sangundhya	Kartala	OA	1304	781.644	0.5	0.039
41	23	Korba	Korba	Kotmer To Sangundhya	Korba	OA	1302	1266.127	0.5	0.063
42	1	Korba	Korba	Kartala To Kurnamur	Kudmura	OA	1425	447.595	0.5	0.022
43	2	Korba	Korba	Kartala To Kurnamur	Kudmura	OA	1424	684.961	0.5	0.034
44	2	Korba	Korba	Kartala To Chudhya	Kudmura	PP	1139	1027.870	0.5	0.081
45	3	Korba	Korba	Kartala To Chudhya	Kudmura	PP	1138	2335.917	0.5	0.117
46	4	Korba	Korba	Kartala Block To Kalgamar	Kudmura	PP	1141	614.336	0.5	0.031
47	4	Korba	Korba	Kartala To Chudhya	Kudmura	OA	1429	949.723	0.5	0.048
48	28	Korba	Korba	Aurai To Pathaganj	Kudmura	PP	1177	1952.621	0.5	0.098
Total							7	8613.833	0.5	0.431
Grand Total							48	71382.403	0.5	3.578

Table B - Area statement for proposed forest Patches - Revenue Forest Land (Chhote / Bade Jhad ka Jangal)

Sl. No.	Patch	District	Block	Route Name	Village	Type	Khasra No.	Length (in m.)	Width (in m.)	Proposed Area (in Ha.)
1	6	Korba	Korba	Madwani To Dhalsamuda	Charnar	BJJ	511	52.910	0.5	0.002
2	6	Korba	Korba	Madwani To Dhalsamuda	Manvasi	BJJ	363	53.902	0.5	0.003
3	6	Korba	Korba	Madwani To Dhalsamuda	Manvasi	BJJ	364	25.878	0.5	0.001
4	7	Korba	Korba	Jogipali To Jogipali	Noudarha	BJJ	648	99.423	0.5	0.005
5	7	Korba	Korba	Jogipali To Rampur	Rampur	BJJ	434	226.936	0.5	0.011
6	8	Korba	Korba	Rampur To Chainpur	Rampur	BJJ	10	302.199	0.5	0.015
7	8	Korba	Korba	Rampur To Chainpur	Rampur	BJJ	750/1	232.646	0.5	0.012
8	10	Korba	Korba	Chinara To Boli	Boli	BJJ	644/1	130.520	0.5	0.007
9	11	Korba	Korba	Dhalsamuda To Badmur	Tungamur	BJJ	423	1163.787	0.5	0.054
10	14	Korba	Korba	Kartala To Champa	Kartala	BJJ	1224	158.797	0.5	0.008
11	15	Korba	Korba	Kartala To Komer	Kartala	BJJ	595	364.209	0.5	0.018
12	16	Korba	Korba	Kotmer To Noubira	Kotmer	BJJ	45/1	510.504	0.5	0.026
13	16	Korba	Korba	Kotmer To Noubira	Kotmer	BJJ	846	259.889	0.5	0.013
14	18	Korba	Korba	Noubira To Dongasama	Noubira	BJJ	359	451.865	0.5	0.023
15	21	Korba	Korba	Noubira To Dongasama	Dongasama	BJJ	1/1	737.809	0.5	0.037
16	25	Korba	Korba	Kanki To Korakachhar	Kanki	BJJ	1606	475.851	0.5	0.024
17	30	Korba	Korba	Supatari To Dhodhatrai	Supatari	BJJ	80	158.159	0.5	0.008
18	31	Korba	Korba	Tuman To Chikampali	Chikampali	BJJ	2/1	295.140	0.5	0.010
19	31	Korba	Korba	Tuman To Chikampali	Chikampali	BJJ	441/1	127.242	0.5	0.006
20	31	Korba	Korba	Tuman To Chikampali	Chikampali	BJJ	65/1	120.395	0.5	0.006
21	31	Korba	Korba	Tuman To Chikampali	Chikampali	BJJ	65/2	175.682	0.5	0.009
22	31	Korba	Korba	Tuman To Chikampali	Chikampali	BJJ	89/1	154.537	0.5	0.008
23	32	Korba	Korba	Pathaganj To Aurai	Aurai	BJJ	419	279.815	0.5	0.014
24	32	Korba	Korba	Pathaganj To Aurai	Aurai	BJJ	470	1184.961	0.5	0.059
25	32	Korba	Korba	Pathaganj To Aurai	Aurai	BJJ	7	353.286	0.5	0.018
26	34	Korba	Korba	Karwandwari To Sandripali	Karwandwari	BJJ	420	355.078	0.5	0.018
27	35	Korba	Korba	Sandripali To Ghinam	Sandripali	BJJ	543	105.207	0.5	0.005
Total							27	9478.227	0.5	0.473

Forest Area Statement - Kartala Block with in Korba Forest Division, District - Korba

Total Route Length (in Km.)	Length of Non Forest Land (in Km.)	Width of Non Forest Land (in Ha.)	Area of Non-Forest Land (in Ha.)	Length of Forest Land (in Km.)	Width of Forest Land (in Ha.)	Area of Proposed Forest Land (in Ha.)
414.559	334.106	0.0095	16.785	80.853	0.0095	4.843

Applied By :

Chhattisgarh Infotech Promotion Society
 2nd Floor, State Data Centre Building,
 Opp. New Circuit House, Civil Lines,
 Raipur, Chhattisgarh 492001

TATA PROJECTS

Tata Projects Limited
 Transocean House 2nd,3rd, & 4th Floor
 Hiranandani Business Park Powai, Mumbai 400 076

Legend

- Green Panchayat
- Reserve Forest
- Orange Area
- Protected Forest
- Reserve Forest
- Proposed OFC Route

Scale: 1:50000

0 1 2 4 6 8 Kilometers

Korba Forest Division - Total Forest Area for Diversion Proposal

Sl. No.	Forest Division	Forest Range	No of Compartment	Length (in m.)	Width (in m.)	Proposed Area (in Ha.)
1	Korba	Kartala	38	59250.085	0.5	2.963
2	Korba	Korba	3	3515.284	0.5	0.176
3	Korba	Kudmura	7	8613.833	0.5	0.431
Total of Table A						71382.402
Total of Table B						9478.227
Total Diversion Area (Table A+Table B)						80860.629