

NO. F44N16
OPEN SERIES MAP

Scale 1:50,000



Scale 1:50,000

सर्वेक्षण विभाग
SURVEY OF INDIA

1st Edition 2010. Price Rs. 70/-

CONVENTIONAL SYMBOLS

NOTES:

1. Contour interval 20 meters.

2. Spot heights are shown in feet and meters.

3. The map is based on the datum of 1956.

4. The map is based on the datum of 1956.

5. The map is based on the datum of 1956.

6. The map is based on the datum of 1956.

7. The map is based on the datum of 1956.

8. The map is based on the datum of 1956.

9. The map is based on the datum of 1956.

10. The map is based on the datum of 1956.

11. The map is based on the datum of 1956.

12. The map is based on the datum of 1956.

13. The map is based on the datum of 1956.

14. The map is based on the datum of 1956.

15. The map is based on the datum of 1956.

16. The map is based on the datum of 1956.

17. The map is based on the datum of 1956.

18. The map is based on the datum of 1956.

19. The map is based on the datum of 1956.

20. The map is based on the datum of 1956.

21. The map is based on the datum of 1956.

22. The map is based on the datum of 1956.

23. The map is based on the datum of 1956.

24. The map is based on the datum of 1956.

25. The map is based on the datum of 1956.

26. The map is based on the datum of 1956.

27. The map is based on the datum of 1956.

28. The map is based on the datum of 1956.

29. The map is based on the datum of 1956.

30. The map is based on the datum of 1956.

31. The map is based on the datum of 1956.

32. The map is based on the datum of 1956.

33. The map is based on the datum of 1956.

34. The map is based on the datum of 1956.

35. The map is based on the datum of 1956.

36. The map is based on the datum of 1956.

37. The map is based on the datum of 1956.

38. The map is based on the datum of 1956.

39. The map is based on the datum of 1956.

40. The map is based on the datum of 1956.

41. The map is based on the datum of 1956.

42. The map is based on the datum of 1956.

43. The map is based on the datum of 1956.

44. The map is based on the datum of 1956.

45. The map is based on the datum of 1956.

46. The map is based on the datum of 1956.

47. The map is based on the datum of 1956.

48. The map is based on the datum of 1956.

49. The map is based on the datum of 1956.

50. The map is based on the datum of 1956.

51. The map is based on the datum of 1956.

52. The map is based on the datum of 1956.

53. The map is based on the datum of 1956.

54. The map is based on the datum of 1956.

55. The map is based on the datum of 1956.

56. The map is based on the datum of 1956.

57. The map is based on the datum of 1956.

58. The map is based on the datum of 1956.

59. The map is based on the datum of 1956.

60. The map is based on the datum of 1956.

61. The map is based on the datum of 1956.

62. The map is based on the datum of 1956.

63. The map is based on the datum of 1956.

64. The map is based on the datum of 1956.

65. The map is based on the datum of 1956.

66. The map is based on the datum of 1956.

67. The map is based on the datum of 1956.

68. The map is based on the datum of 1956.

69. The map is based on the datum of 1956.

70. The map is based on the datum of 1956.

71. The map is based on the datum of 1956.

72. The map is based on the datum of 1956.

73. The map is based on the datum of 1956.

74. The map is based on the datum of 1956.

75. The map is based on the datum of 1956.

76. The map is based on the datum of 1956.

77. The map is based on the datum of 1956.

78. The map is based on the datum of 1956.

79. The map is based on the datum of 1956.

80. The map is based on the datum of 1956.

81. The map is based on the datum of 1956.

82. The map is based on the datum of 1956.

83. The map is based on the datum of 1956.

84. The map is based on the datum of 1956.

85. The map is based on the datum of 1956.

86. The map is based on the datum of 1956.

87. The map is based on the datum of 1956.

88. The map is based on the datum of 1956.

89. The map is based on the datum of 1956.

90. The map is based on the datum of 1956.

91. The map is based on the datum of 1956.

92. The map is based on the datum of 1956.

93. The map is based on the datum of 1956.

94. The map is based on the datum of 1956.

95. The map is based on the datum of 1956.

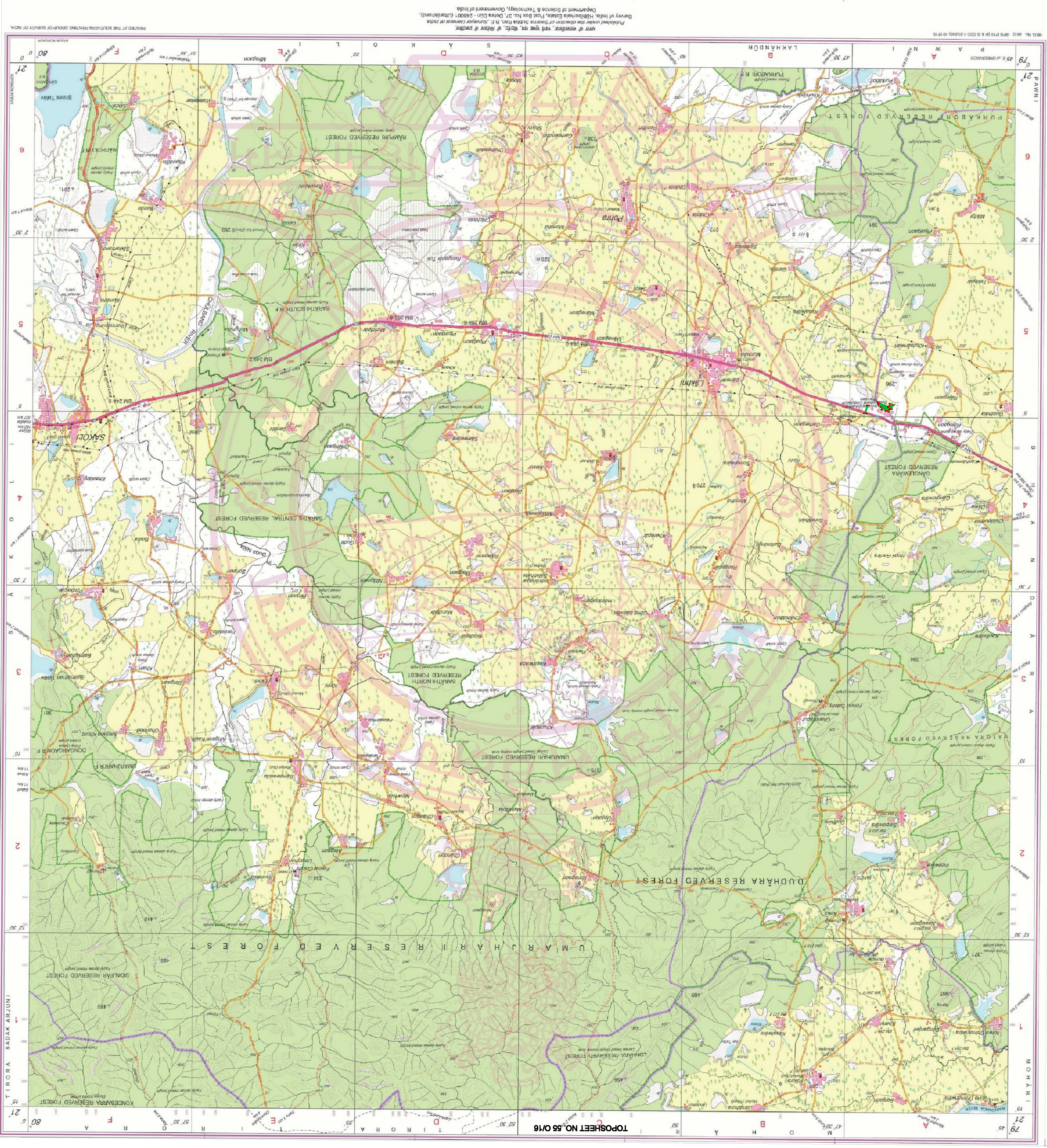
96. The map is based on the datum of 1956.

97. The map is based on the datum of 1956.

98. The map is based on the datum of 1956.

99. The map is based on the datum of 1956.

100. The map is based on the datum of 1956.



Proposed for diversion of 344 ha. of forest land For non forestry use i.e. for Industrial Unit
For non forestry use i.e. for Industrial Unit of District Bhandara of Maharashtra State.

BP NO.	EASTING	NORTHING	LONGITUDE	LATTITUDE
BP-1	373278.20	331647.74	79°46'48.30"	21°45'3.20"
BP-2	373234.59	331514.35	79°46'49.70"	21°44'58.90"
BP-3	373316.36	331514.35	79°46'49.70"	21°44'58.90"
BP-4	373339.56	331566.78	79°46'50.50"	21°45'00.60"
BP-5	373350.75	331594.31	79°46'50.90"	21°45'1.50"
BP-6	37362.76	331483.59	79°47'0.30"	21°44'8.00"
BP-7	373621.67	331498.49	79°47'0.30"	21°44'8.50"
BP-8	373610.64	331524.93	79°46'59.90"	21°44'9.30"
BP-9	373544.71	331590.01	79°46'57.60"	21°45'1.40"
BP-10	373515.79	331651.64	79°46'56.60"	21°45'3.40"
BP-11	373414.76	331692.36	79°46'53.10"	21°45'4.70"
BP-12	373377.49	331698.50	79°46'51.80"	21°45'4.90"
BP-13	373351.63	331707.22	79°46'50.90"	21°45'5.20"
BP-14	373322.99	331632.88	79°46'49.90"	21°45'2.80"
BP-15	373969.10	331775.92	79°47'12.20"	21°45'7.00"
BP-16	373977.26	331755.20	79°47'12.50"	21°45'6.90"
BP-17	373910.70	331543.82	79°47'10.30"	21°45'0.00"
BP-18	373902.54	331546.54	79°47'10.00"	21°45'0.10"

Sr. No.	Maunje Tahsil Dist.	Area in Hectare	Legal Status
1	Maunje Tahsil Dist. <td>138</td> <td>ZUMI JUNGLE</td>	138	ZUMI JUNGLE
2	Bhandara Bhandara <td>1.82</td> <td>BADE JHAN KA JUNGLE</td>	1.82	BADE JHAN KA JUNGLE
3	Bhandara Bhandara <td>57</td> <td>BADE JHAN KA JUNGLE</td>	57	BADE JHAN KA JUNGLE

LEGEND

Forest Boundary Area

Scale 1:50,000

