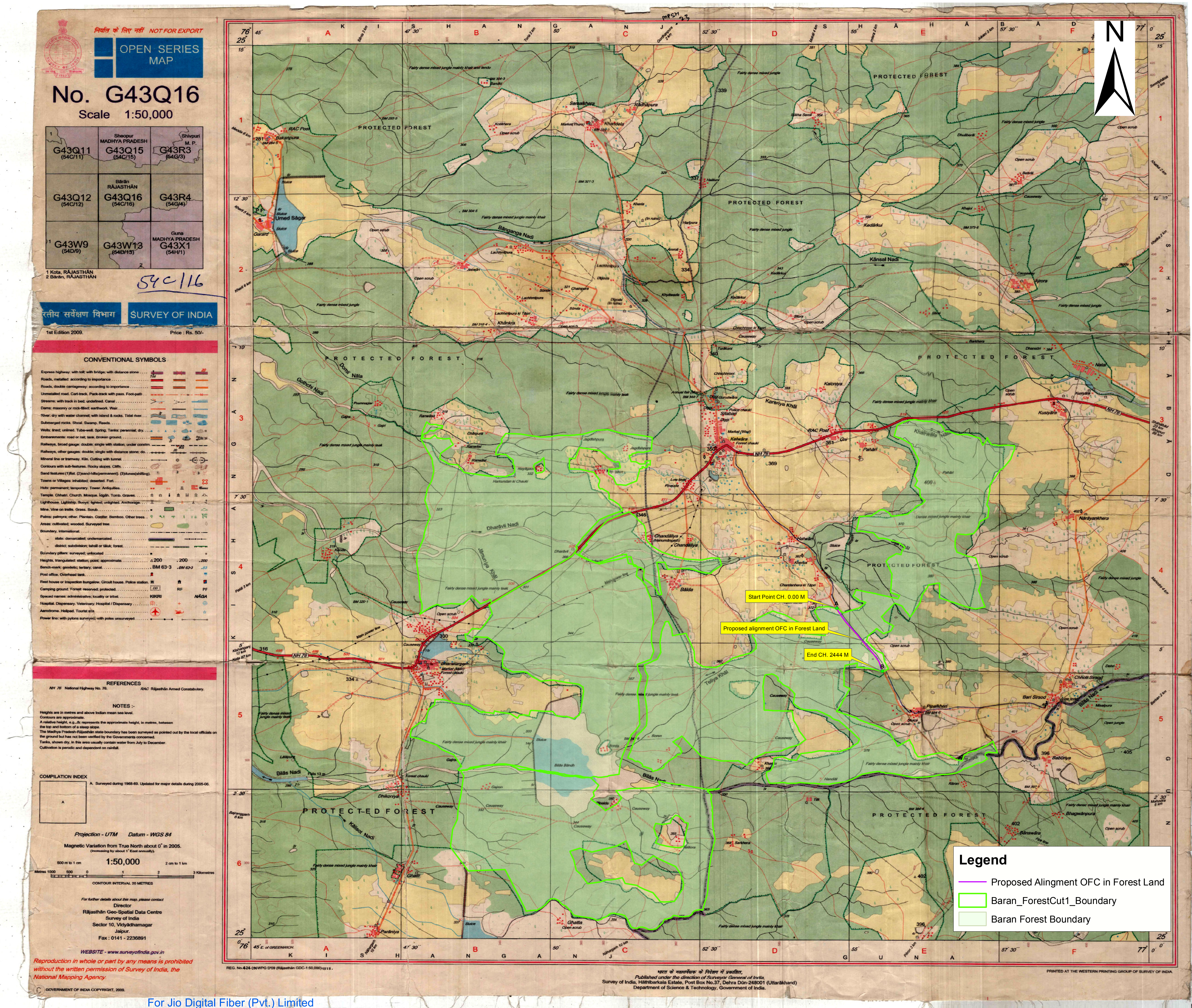


MAP SHOWING GEO-REFERENCED SURVEY OF INDIA TOPOSHEET WITH FOREST BOUNDARY AND PROPOSED OFC ALIGNMENT

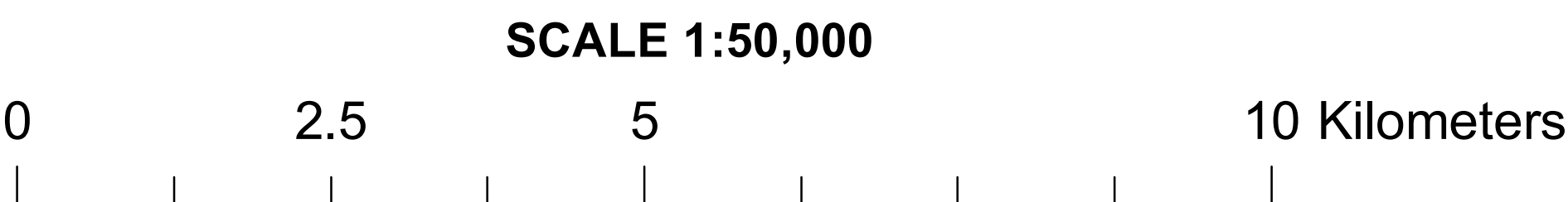
"Proposal No - FP/RJ/OFC/44037/2020 Dated 20th January 2020  
Project Title - Permission for underground OFC laying work along PWD road  
from Kelwara to M.P. Border from Lat/long point 25.092369° /76.913081° to 25.074795°/ 76.925844°  
(Ch.-00/000 to 2/444) KM for total length of 2.444 KM (forest area – 0.110 ha) within ROW Limits in Baran District, Rajasthan."

PART OF TOPOSHEET NO. 54C/13



For Jio Digital Fiber (Pvt.) Limited

Authorized Signatory



Countersigned  
Divisional Forest officer  
Baran Forest Division  
Office Seal .....

Lat/ Long	Lat/ Long	Lat/ Long	Width	Length in Forest	Area in Forest	Length in Non-Forest	Area in Non-Forest	Total Length	Total Area
From-To	From	To	(m)	(m)	(ha)	(m)	(ha)	(m)	(ha)
A to B	25.09242/76.913134	25.074824/76.92588	0.45	2444	0.110	0	0	2444	0.110
Total				2444	0.110	0	0	2444	0.110