

Details scheme of compensatory afforestation for Diversion of 22.176 Ha Protected Forest land for the Protected Forest for lining of Vadodara-Padara-Jambusar Road Km.16/280 to 44/00 District Vadodara in Gujarat State



No. F43H10

Scale 1:50,000

Kheda GUJARAT F43H5 (46F5)	F43H9 (46F9)	F43H13 (46F13)
F43H6 (46F6)	Panch Mahals GUJARAT F43H10 (46F10)	F43H14 (46F14)
Vadodara GUJARAT F43H7 (46F7)	F43H11 (46F11)	Vadodara GUJARAT F43H15 (46F15)

भारतीय सर्वेक्षण विभाग SURVEY OF INDIA

1st Edition 2010.

Price : Rs. 50/-

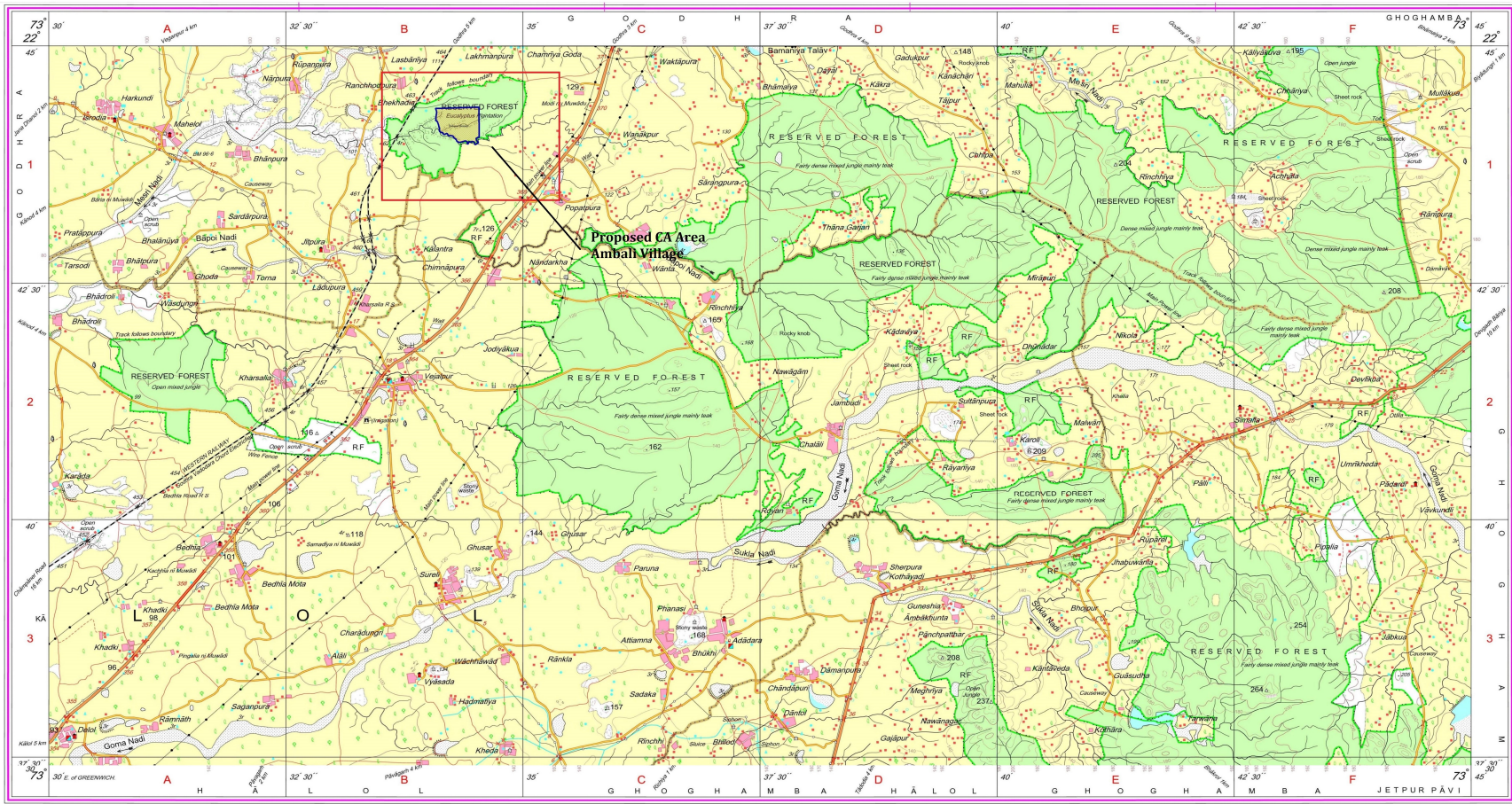
CONVENTIONAL SYMBOLS

Express highway with toll with bridge with distance stone	20
Roads, metalled, according to importance	15
Roads, double cartriageway according to importance	10
Unmetalled road, Cart-track, Pack-track with pass, Foot-path	5
Streams, with track in bed, undefined, Canal	2
Dam, masonry or rock filled, cartwork, Weir	1
River, dry with water channel with sand & rocks, Tidal river	0.5
Submerged rocks, Shoal, Swamp, Reeds	0.2
Wells, lined, unlined, Tube-well, Spring, Tanks, perennial, dry	0.1
Embankments, road or rail, tank, Broken ground	0.05
Railways, broad gauge, double, single with station, under constn.	0.02
Railways, other gauges, double, single with station, under constn.	0.01
Minefall line or railway, Kin. Cutting with tunnel	0.005
Contours with sub-features, Rocky slopes, Cliffs	0.002
Sand features (1 ft. (32nd-40th centimetres), (Dikes) (shifting)	0.001
Towns or Villages, inhabited, deserted, Fort	0.0005
Hulk, permanent, temporary, Tower, Antiquities	0.0002
Temples, Chhatris, Churches, Mosques, Temples, Tombs, Graves	0.0001

WEBSITE : www.surveyofindia.gov.in

Reproduction in whole or part by any means is prohibited without the written permission of Survey of India, the National Mapping Agency.

GOVERNMENT OF INDIA COPYRIGHT, 2010.



REG. No. SPG D10 (GDAD GDC-1:50,000)

भारत के सर्वेक्षण के विभाग ने प्रकाशित,
Published under the direction of Surveyor General of India,
Survey of India, Jhilmilbarkala Estate, Post Box No.37, Delhi-110049 (Uttarakhand)
Department of Science & Technology, Government of India.

PRINTED AT THE SOUTHERN PRINTING GROUP OF SURVEY OF INDIA.

REFERENCE

Proposed CA Land Ambali Village 45 Ha

(D.R.Patel)
Range Forest Officer
(Survey) Godhra

(M.L.Meena)
Deputy Conservator of Forest
Godhra