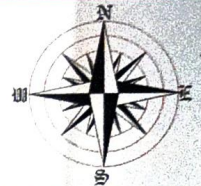


MAP SHOWING THE PROPOSED SITE FOR COMPENSATORY AFFORESTATION AGAINST DIVERSION OF 257.769 HECTS OF FOREST LAND (90.607 Ha IN LOHIT FOREST DIVISION) FOR LAYING 132 KV S/C TRANSMISSION LINE FROM TEZU TO HALAIPANI BY POWERGRID CORPORATION OF INDIA LTD. IN TAFRAGAM ANCHAL RESERVED FOREST.

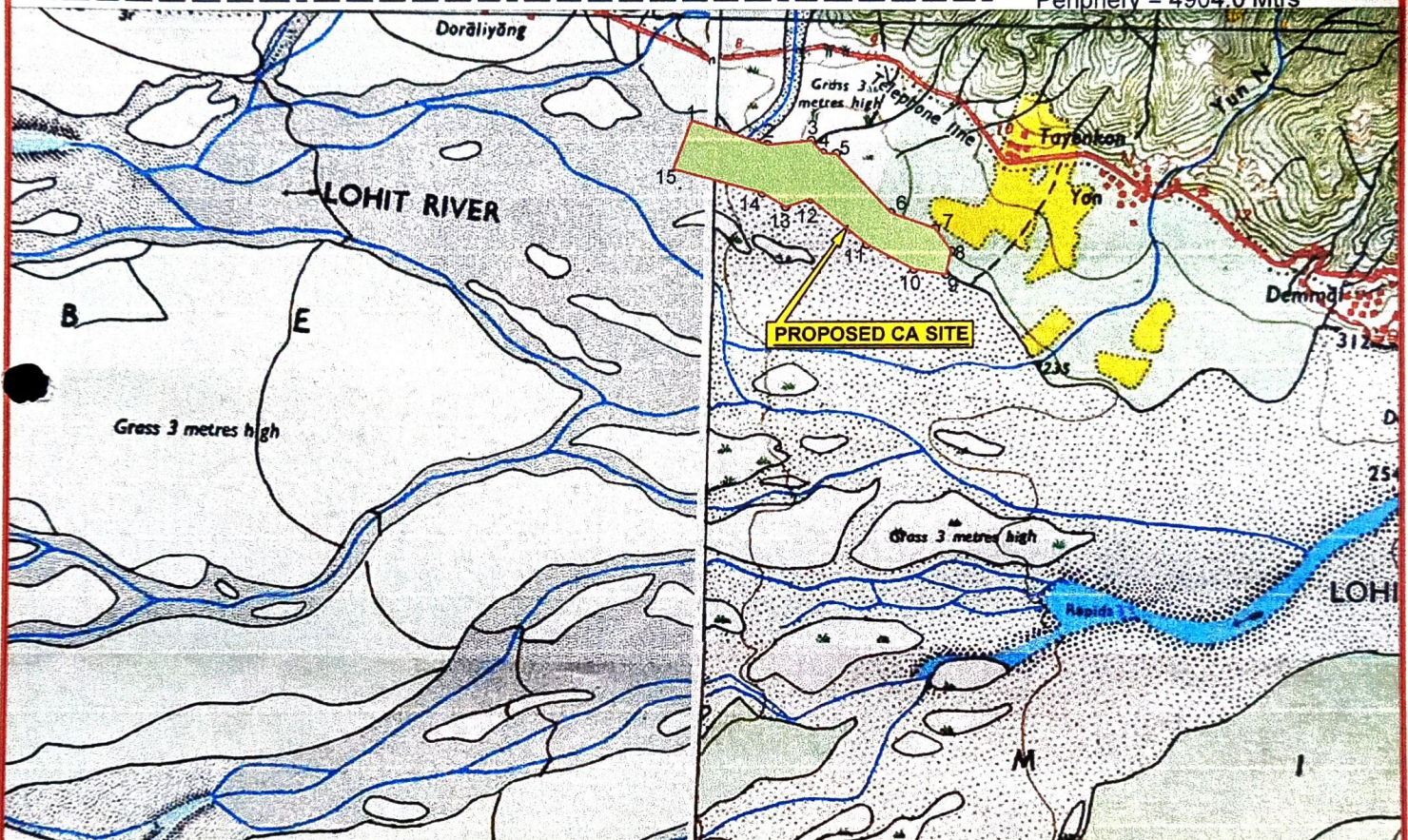


SCALE : 1:50 000

Sol TOPO SHEET REF: 92 A/5

Area = 67.00 Hects

Periphery = 4904.0 Mtrs

**BOUNDARY DESCRIPTIONS**

1.	27° - 54' - 37.86"	96° - 14' - 53.30"
2.	27° - 54' - 32.62"	96° - 15' - 13.01"
3.	27° - 54' - 33.80"	96° - 15' - 24.32"
4.	27° - 54' - 30.91"	96° - 15' - 27.44"
5.	27° - 54' - 30.82"	96° - 15' - 30.85"
6.	27° - 54' - 17.27"	96° - 15' - 45.50"
7.	27° - 54' - 13.85"	96° - 15' - 57.14"
8.	27° - 54' - 08.64"	96° - 16' - 01.41"
9.	27° - 54' - 03.17"	96° - 16' - 00.14"
10.	27° - 54' - .04.26"	96° - 15' - 51.86"
11.	27° - 54' - 09.84"	96° - 15' - 39.50"
12.	27° - 54' - 20.13"	96° - 15' - 24.43"
13.	27° - 54' - 18.20"	96° - 15' - 18.14"
14.	27° - 54' - 21.40"	96° - 15' - 12.00"
15.	27° - 54' - 26.44"	96° - 14' - 48.91"

LEGEND

1. PLANTATION BOUNDARY : _____

2. PLANTATION AREA :

Countersigned :

(T. Pertin) FS
Divisional Forest Officer
Lohit Forest Division :: Tezu

Drawn by :

(S Chowdhury)
Addl Chief Estimator
Lohit Forest Division :: Tezu

Surveyed by :

(Addang Yirang) FR
Range Forest Officer
Tafragam Anchal Forest Range

Range Forest Officer
Tafragam Forest Range

**MAP SHOWING THE PROPOSED SITE FOR
COMPENSATORY AFFORESTATION AGAINST
DIVERSION OF 257.769 HECTS OF FOREST LAND (90.607
Ha IN LOHIT FOREST DIVISION) FOR LAYING 132 KV S/C
TRANSMISSION LINE FROM TEZU TO HALAIPANI BY
POWERGRID CORPORATION OF INDIA LTD. IN
TEZU PROPOSED RESERVED FOREST.**

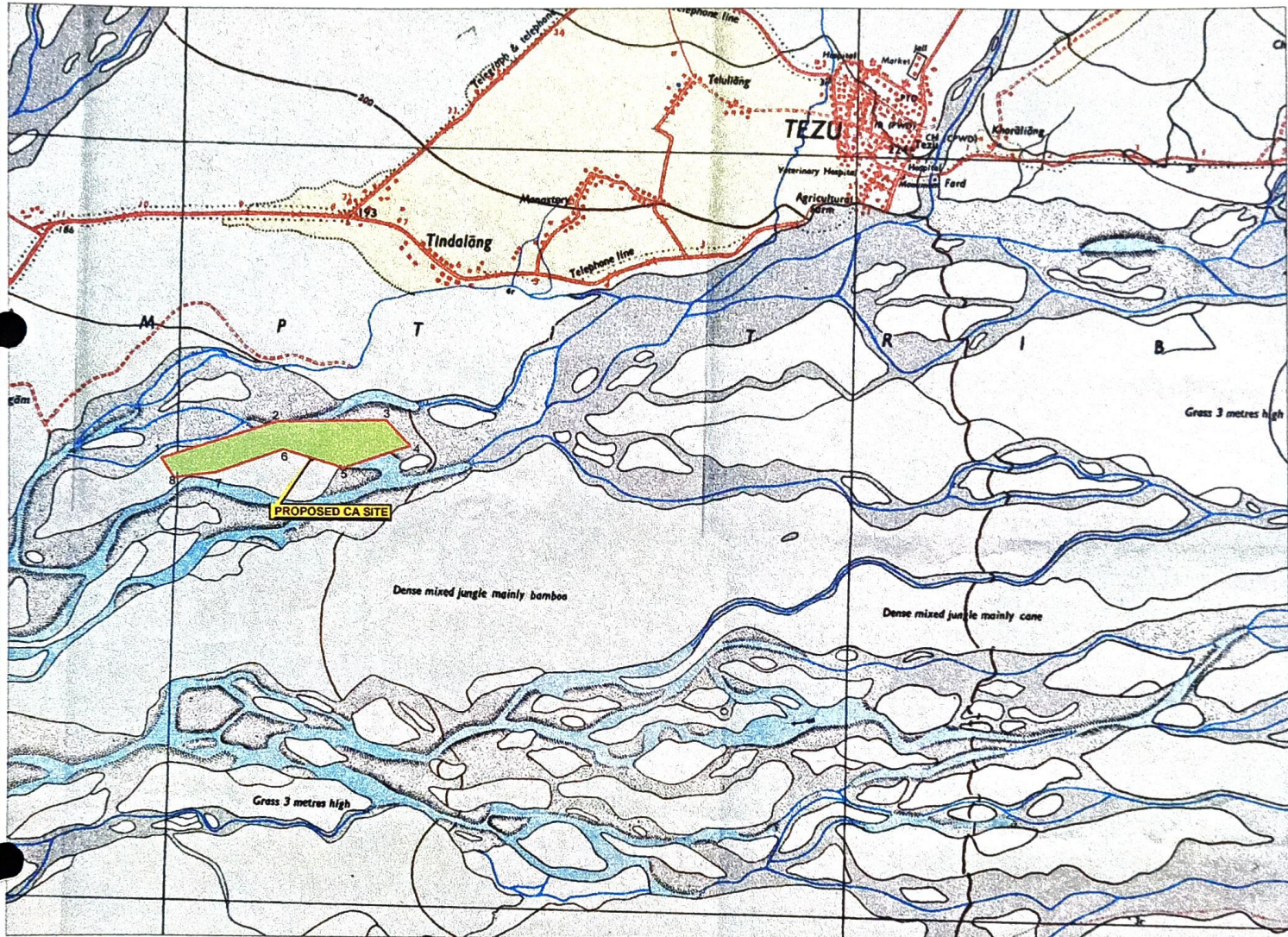


SCALE : 1:50 000

Sol TOPO SHEET REF: 92 A/5

Area = 115.00 Hects

Periphery = 6524.0 Mtrs



BOUNDARY DESCRIPTIONS

- | | | |
|-----|---------------|-----------------|
| (1) | 27°52'54.17"N | 96° 04' 52.77"E |
| (2) | 27°53'09.99"N | 96° 05' 44.23"E |
| (3) | 27°53'11.87"N | 96° 06' 32.06"E |
| (4) | 27°53'01.89"N | 96° 06' 43.40"E |
| (5) | 27°52'52.37"N | 96° 06' 13.67"E |
| (6) | 27°52'58.89"N | 96° 05' 46.87"E |
| (7) | 27°52'48.97"N | 96° 05' 17.24"E |
| (8) | 27°52'46.5"N | 96° 04'58.61"E |

LEGEND

1. PLANTATION BOUNDARY :

2. PLANTATION AREA :

Countersigned :

(T. Pertin) IFS
Divisional Forest Officer
Lohit Forest Division :: Tezu

Drawn by :

(S Chowdhury)
Addl Chief Estimator
Lohit Forest Division :: Tezu

Surveyed by :

(Lod Lalayang) FR
Range Forest Officer
Tezu Forest Range :: Tezu