

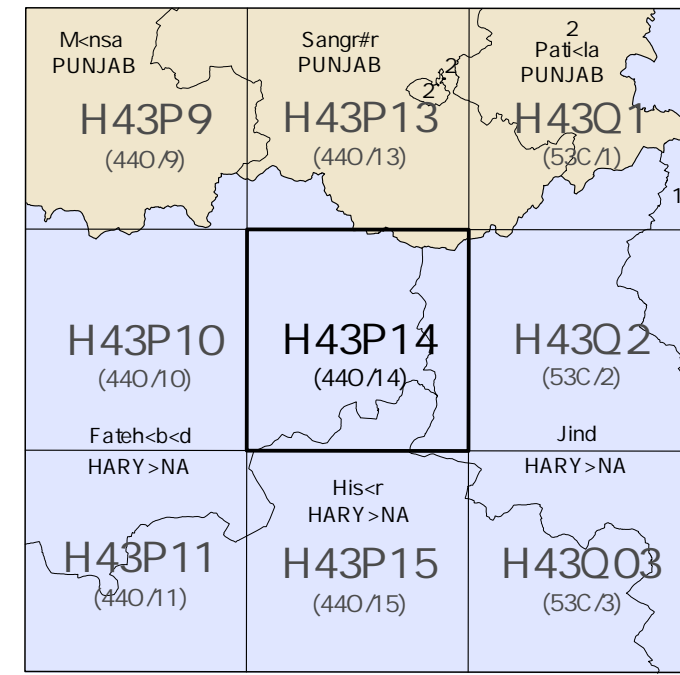


निर्वात के लिए नहीं NOT FOR EXPORT

OPEN SERIES MAP

No. H43P14

Scale 1:50,000



भारतीय सर्वेक्षण विभाग SURVEY OF INDIA

1st Edition 2009. Price: RS. 50/-

CONVENTIONAL SYMBOLS

- Express Highway with toll, with bridge, with distance stone
- Roads, metalled according to importance
- Roads, double carriageway according to importance
- Unmetalled road. Cart-track. Pack-track with pass. Foot-path.
- Streams with track in bed, unforded. Canal.
- Dams; masonry or rock-filled, earthwork. Weir.
- River; dry with water channel, with island & rocks. Tidal river.
- Submerged rocks. Shoal. Swamp. Reeds.
- Walls; tract, unforded. Tube-well. Spring. Tanks; perennial, dry.
- Embankments; road or rail. Broken ground.
- Railways, broad gauge; double, single with station, under constn.
- Railways, other gauges; double, single with distance stone.
- Mineral line or tramway. Kin. Cutting with tunnel.
- Contours with sub-features. Rocky slopes. Cliffs.
- Sand features (1 flat, 2 strand-ridge/permanent), (3) dunes/shifting.
- Towns or Villages; unfortified, fortified. Fort.
- Mine; permanent, temporary. Tress; Antelope.
- Temple, Chhatra, Church, Mosque, Ghat, Tomb, Graves.
- Lighthouse, Lightship, Buoy; signal, unlighted. Anchorage.
- Mine; Vine on hills; Grass, Scrub.
- Palms; patmyra; other. Plantain, Conifer, Bamboo, Other trees.
- Areas; cultivated, wooded, Surveyed tree.
- Boundary, international.
- state; demarcated, undemarcated.
- district; subdivision, taluk or taluk forest.
- Boundary pillars; surveyed, unlocated.
- Heights, triangulated station; point; approximate.
- Bench-mark; geodetic, tertiary, canal.
- Post office, Telegraph office, Overhead tank.
- Rest house or inspection bungalow. Circuit house. Police station.
- Camping ground; Forest; reserved, protected.
- Spaced names; administrative, locality or tribal.
- Hospital; Dispensary, Veterinary Hospital / Dispensary.
- Aerodrome, Helipad, Transit site.
- Power line; with pylons surveyed, with poles unsurveyed.

REFERENCE

REV. 65: National Highway No. 65

NOTES

- Heights are in metres and above Indian mean sea level.
- Contours are approximate.
- Canal distance stones are 1:500 feet apart and every existing fifth stone is shown.
- All cart-tracks and unmetalled roads in this sheet are generally notifiable in dry season. Permission to use these along canals is required from the Irrigation authorities.
- A relative height, e.g., 20metres, along a canal, indicates the height of the top of the canal embankment above the adjacent country.
- The triangulated heights and contours in this sheet have not been adjusted to the heights of the spirit levelled bench-marks and may not be strictly in accordance with them.
- Tanks, shown dry, in this area usually contain water from July to March.
- 3000' area retriangulation stones of British Dam Project Survey based on Origin 30° 02' N, 75° 15' E with their numbers are shown as tertiary bench-marks thus: 12 218, BM 222.5.
- The state boundary between Haryana and Punjab states has been surveyed as pointed out by the local officials on the ground but has not been verified by the Government concerned.

COMPILATION INDEX

A Compiled from 1:25,000 survey 1986-87, Updated for major details during 2005-06.

Projection - UTM Datum - WGS 84

Magnetic Variation from True North about 3° East in 2005. (Increase by about 1' annually).

1:50,000



CONTOUR INTERVAL 20 METRES

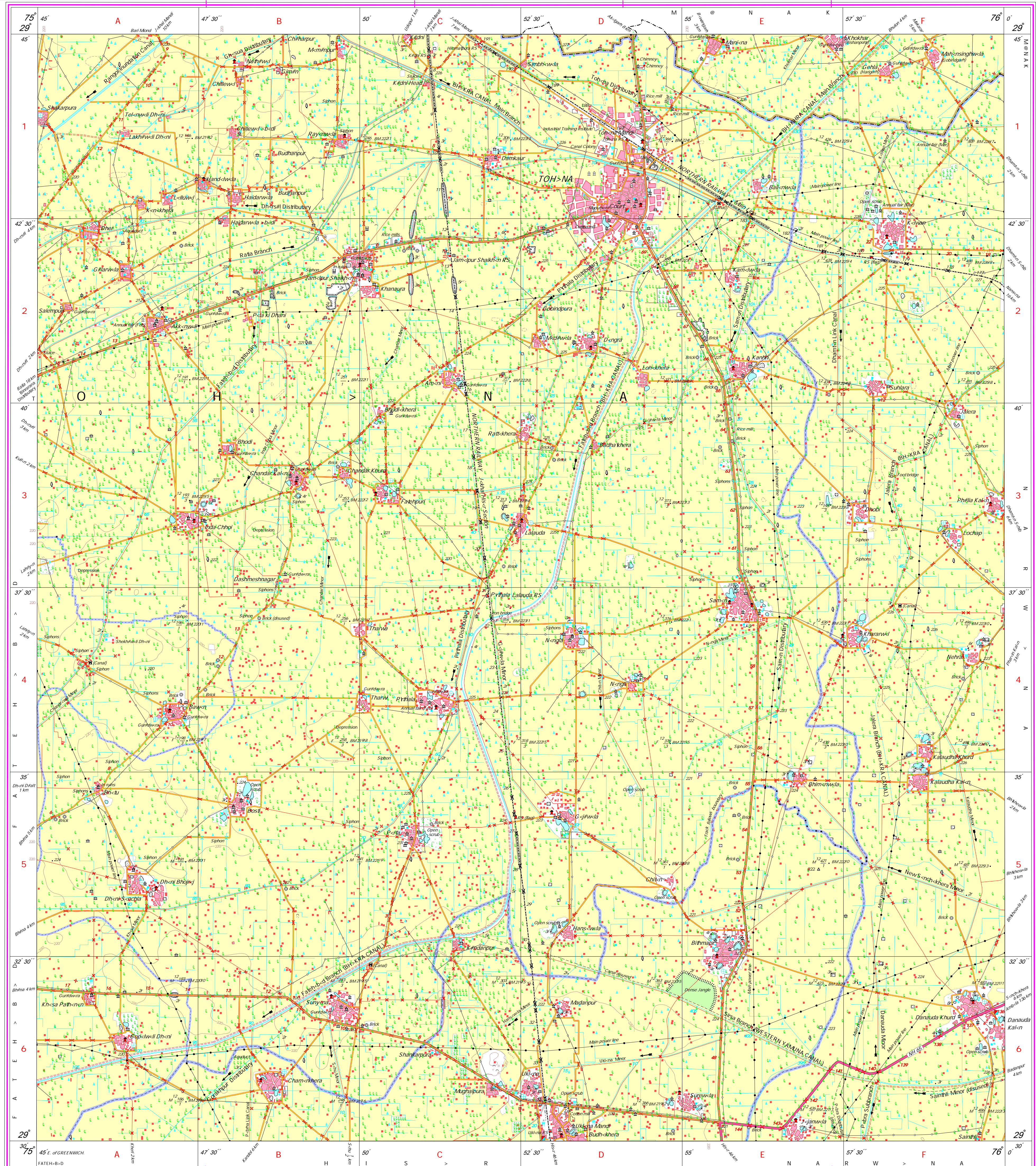
For further details about this map, please contact:

Director, Punjab, Haryana Chandigarh Geo-Spatial Data Centre, Survey of India, Sector 32A, Chandigarh. Fax: 0172-2665027

WEBSITE - www.surveyofindia.gov.in

Reproduction in whole or part by any means is prohibited without the written permission of Survey of India, the National Mapping Agency.

GOVERNMENT OF INDIA COPYRIGHT, 2009.



REG. NO. - WPG D/9 (P/C GDC-150,000)

Printed under the direction of Surveyor General of India, Survey of India, H-14 Barkala Estate, Post Box No. 37, Dehra Dun-248001 (Uttarakhand) Department of Science & Technology, Government of India.

PRINTED AT THE WESTERN PRINTING GROUP OF SURVEY OF INDIA