


निर्यात के लिए नहीं NOT FOR EXPORT

OPEN SERIES  
MAP

No. G44F8

Scale 1:50,000

G44F3 (63M/3)	G44F7 (63M/7)	G44F11 (63M/11)
G44F4 (63M/4)	 <p>Mahārāṅgaṅgā UTTAR PRADESH</p> <p>G44F8 (63M/8)</p>	G44F12 (63M/12)
G44L1 (63N/1)	G44L5 (63N/5)	G44L9 (63N/9)

1 Gorakhpur, UTTAR PRADESH.

SURVEY OF INDIA



1st Edition 2011.

Price : Rs. 70 /

### CONVENTIONAL SYMBOLS

- Deltas: Highways with toll with bridge with isthmus altitude  
 Reach: mountain according to importance  
 Reach: shoulder: development according to importance  
 Unsettled Road: Gorkedok, Pashank, and pass: Post-path  
 Stream: with bank in back: inclined: Canal  
 Dikes: masonry or rock of duff: earthwork: Weir  
 Weir: any with water channel, with island & locks: Tidal river  
 Submerged rocks: Shoal: Swamp: Reedy  
 Wells: lined: ancient: Tube: well: Spring: Their: perennially dry  
 Embankment: road or rail: base: broken ground  
 Railways: forced gauge: double: single with station: under center  
 Railway: under: gauge: double: single with distance: point: do  
 Mileage: line or railway: Kiln: Cutting with channel  
 Contour: with a/b-feature: Reedy: slope: Cliffe  
 Sand features: (offshore) hills: (permanent, do) sand: (shifting)  
 Trenches or valleys: (shallow): channel: Ford  
 Hair: permanent: temporary: River: Arid: plain  
 Temple: Dhafai: Church: Mosque: Uighur: Taro: Green  
 Lightships: Lightships: Lightships: unlighted: Anchorage  
 Mine: View at toll: Green: Sand  
 Pines: palm: palm: other: Pine: Pine: Pine: Pine: Pine: Pine  
 Areas: cultivated: wooded: Surveyed: road  
 Boundary: international  
 - state: demarcated: undemarcated  
 - district: subdivision: half or third: forest  
 Boundary: Pillars: surveyed: undemarcated  
 Halfway, inter-district: station: priority: approximate  
 Demarcated: demarcated: temporary: canal  
 Post office: Telegraph office: Overland: built  
 Heat: house or location: (longitude, Chong: House: House: station  
 Company: general: Forest: reserved: protection  
 Special: means: administrative: leaving: or: initial  
 Hospital: Dispensary: Veterinary hospital  
 Aerodrome: Helidrop: Tourist: pile  
 Flow: line: with rocks: diamond: with rocks: surveyed

### Legend

-  Non Forest Land  
 Forest Land To Be Diverted

NOTES :-

Heights and contour lines not shown. altitudes.

A. Ushakov height, 287, represents the approximate height, in meters, between the top and bottom of a steep slope.

Contours in this sheet are generally jeapable in dry seasons.

The Mikorano slope numbers along railroads and roads are shown in slant type, e.g., "5" whereas milestone numbers are shown in upright type, e.g., "5".

We have been shown, throughout the district, that the "1000" contour line is the most important one.

Permission to use the unimproved road along Marikoung District is required from the irrigation authorities.

COMPILATION INDEX

A Surveyed during 1998-97. Updated for major details during 2004-05

[illegible]

	A	
--	---	--

[illegible][illegible]

\_\_\_\_\_

Projection - UTM Datum - WGS 84

Magnetic Variation from True North about  $\frac{1}{2}^{\circ}$  East in 2005.

(increasing by about 1° annually). <sup>4</sup>

500 m to 1 km      **1:50,000**      2 cm to 1 km

Niveau	1000	500	0	1	2	3	Recherches
--------	------	-----	---	---	---	---	------------

[illegible]

Director

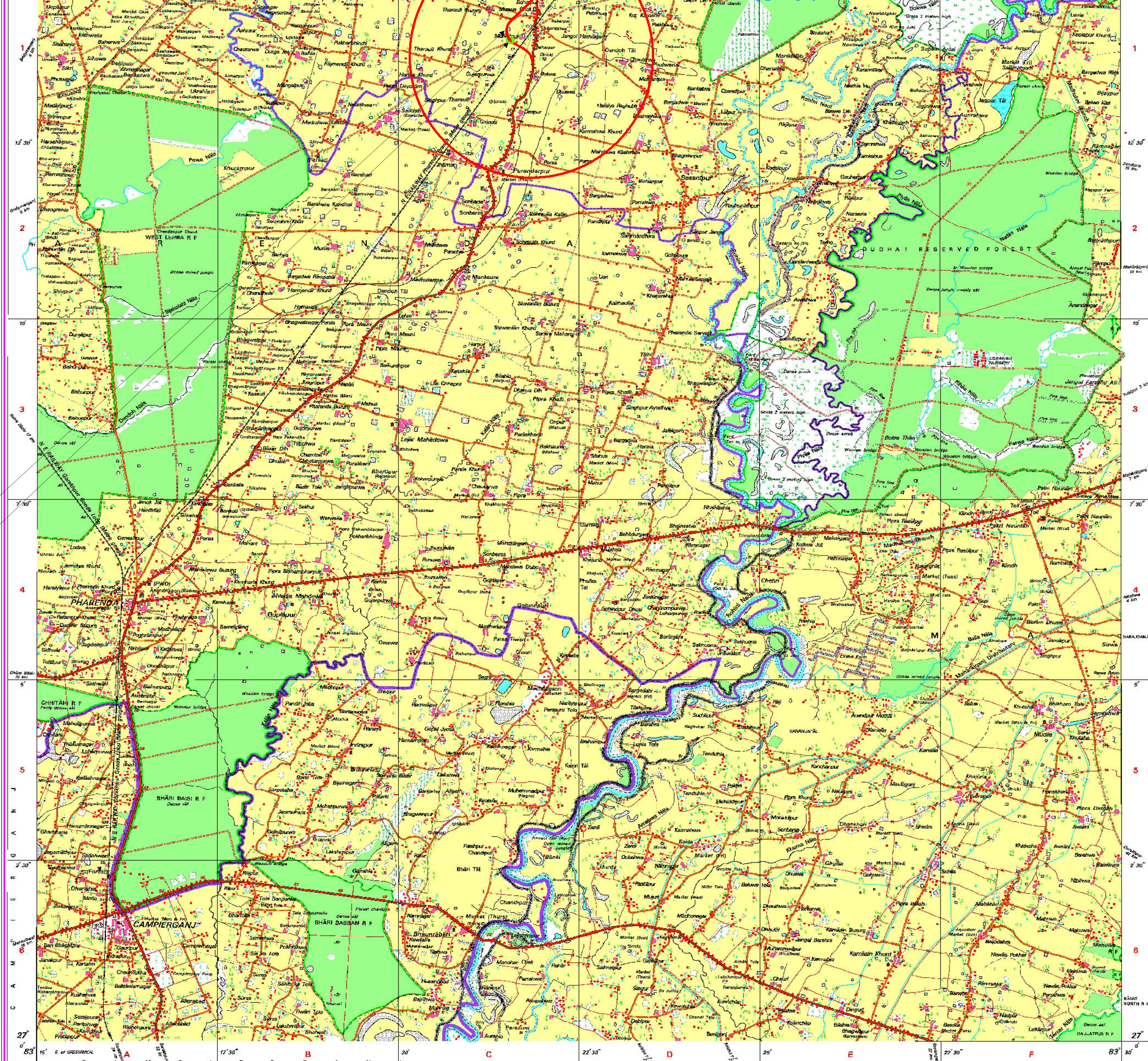
East Uttar Pradesh Geo-Spatial Data Centre

B-2 Block, 2nd Floor, PCLIP Bhuban, Ganti Nagar, Lucknow

2. E. Green, and Peter F. Hall, *Shelburne, 1784-1806*, 1969.

WEBSITE - [www.surveyofindia.gov.in](http://www.surveyofindia.gov.in)

**Proposed forest Land to be Construction of Bypass Road Passing to Protected Forest Land under Project Rehabilitation and Upgradation of Sonali Gorakhpur Section, CH No.33.00 km to 35.500 km Mohanapur Forest Division, Gorakhpur District, Maharaigani (Uttar Pradesh).**



(प्रेम प्रकाश)  
कार्य अधीक्षक  
अ०वि०नि०ई० (रा०मा०  
लो०नि०नि०, गारेखपुर