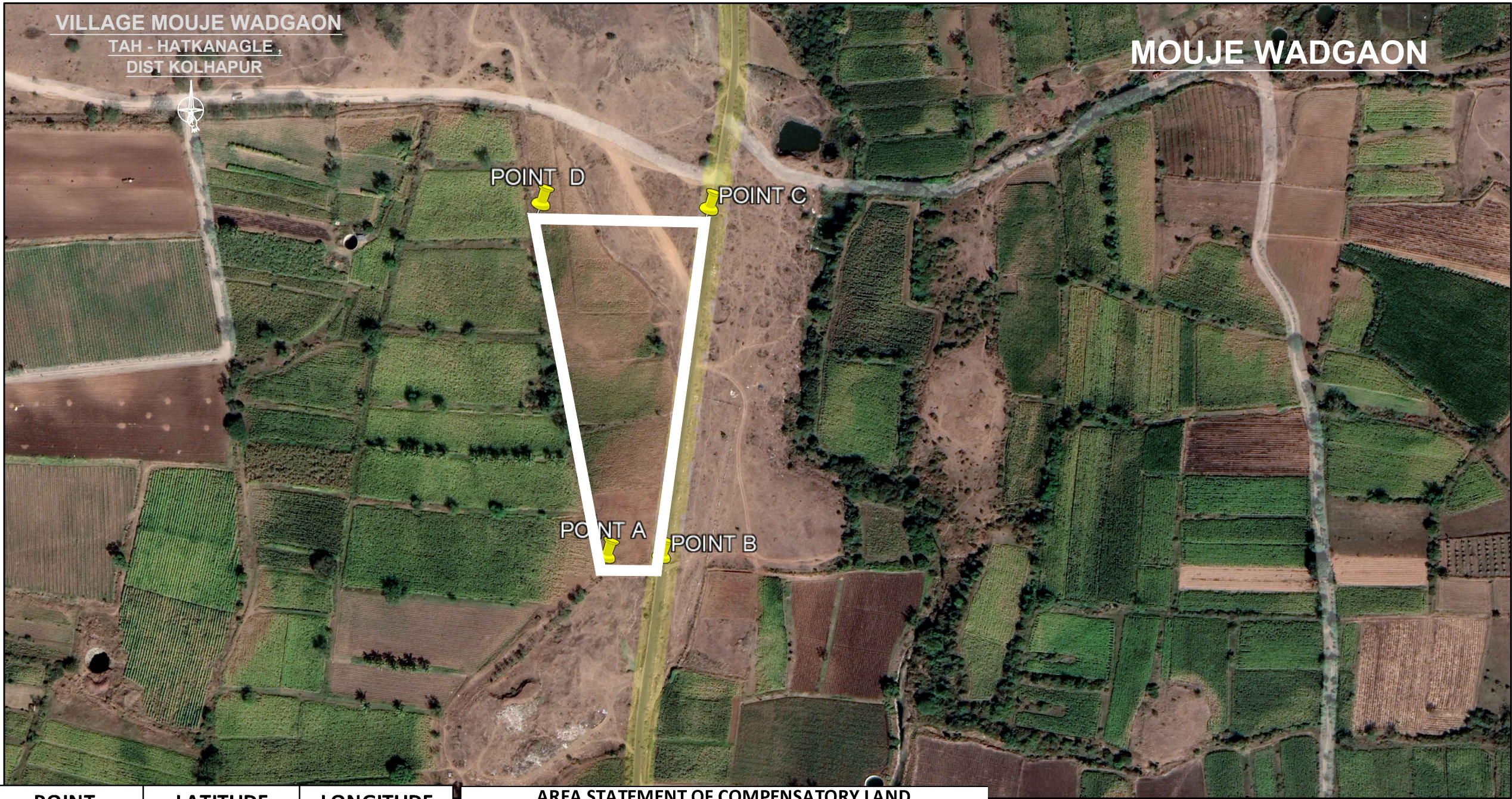


AFFORESTATION IN DEGRADED FOREST LAND - G.P.S. MAP

NAME OF WORK:-DIVERSION OF FOREST LAND INVOLVED UNDER THE PROJECT OF CONSTRUCTION OF ROAD FROM MAJAREWADI TO GHOSARWAD MDR-92 IN VILLAGE-GHOSARWAD, TAH. SHIROL DISTRICT KOLHAPUR (M.S.)



POINT	LATITUDE	LONGITUDE
POINT A	16°47'0.35"N	74°19'8.71"E
POINT B	16°47'0.35"N	74°19'9.87"E
POINT C	16°47'7.31"N	74°19'10.88"E
POINT D	16°47'7.40"N	74°19'7.39"E

PREPARED BY :- EKTA CONSULTANTS, SATARA.
PH - 9623888200

AREA STATEMENT OF COMPENSATORY LAND						
SR. NO	VILLAGE NAME	SURVEY /GUT NO	F.C. NO	LENGTH	WIDTH	AREA
				(M)	(M)	(SQ M)
1	MOUJE WADGAON	483	698/B	215	69.80	15008
	TOTAL AREA MOUJE WADGAON					15008
	TOTAL AREA IN HECTARE			1.50 HA		

DEPUTY ENGINEER PUBLIC WORKS SUB DIV. SHIROL JAISINGHPUR, DIST. KOLHAPUR	EXECUTIVE ENGINEER PUBLIC WORKS DIV. KOLHAPUR, DIST. KOLHAPUR	DY. CONSERVATOR OF FORESTS KOLHAPUR FOREST DIVISION DIST. KOLHAPUR
--------------------------------------------------------------------------------	---------------------------------------------------------------------	--------------------------------------------------------------------------