



नियमित के लिए नहीं NOT FOR EXPORT

OPEN SERIES
MAP

No. D44M3

Scale 1:50,000

D43R14 (57G14) Chik Ballapur KARNATAKA	D44M2 (57K12) 2	D44M6 (57K16)
D43R15 (57G15) Bangalore Rural KARNATAKA	D44M3 (57K13) Kolar KARNATAKA	D44M7 (57K17)
D43R16 (57G16) 2	D44M4 (57K14)	D44M8 (57K18)

1 Bangalore Urban, KARNATAKA. 2 Chittoor, ANDHRA PRADESH.

भारतीय सर्वेक्षण विभाग SURVEY OF INDIA

1st Edition 2010.

Price : Rs. 70/-

CONVENTIONAL SYMBOLS

Express highway, with toll, with bridge, with distance stone	
Roads, metalled, according to importance	
Roads, double cartway, according to importance	
Unmetalled road, cart-track, pack-track with pass, foot-path	
Streams, with track in bed, undefined, Canal	
Dams, masonry or rock-filled, earthwork, Weir	
River, dry with water channel, with island & rocks, Tidal river	
Submerged rocks, Shoal, Swamp, Roads	
Wells lined, unlined, Tube-well, Spring, Tanks perennial, dry	
Embankments, road or rail, tank, Broken ground	
Railways, broad gauge, double, single with station, under constn	
Railways, other gauges, double, single with distance stone, do	
Mineral line or tramway, Kln, Culling with tunnel	
Contours with sub-levels, Rocky slopes, Cliffs	
Sand features (Tidal, (Zeland-hill(permanent), (3)unesdifting)	
Towns or Villages, inhabited, deserted, Fort	
Aids, permanent, temporary, Tower, Antiquities	
Temple, Chhatri, Church, Mosque, Ghat, Tomb, Graves	
Lighthouse, Lightship, Buoy, lighted, unlighted, Anchorage	
Mine, Vine or trellis, Grass, Rocks	
Palms, papyrus, other, Plantain, Conifer, Bamboo, Other trees	
Areas cultivated, wooded, Surveyed tree	
Boundary, international	
state, demarcated, undemarcated	
district, subdivision, taluk or taluk, forest	
Boundary pillar, surveyed, unlocated	
Heights, triangulated, station, point, approximate	
Bench-mark, geodetic, tertiary, coral	
Post office, Telegraph office, Overhead tank	
Rail house or inspection bungalow, Ghat house, Police station	
Camping ground, Forest, reserved, protected	
Spaced names administrative, locality or tribal	
Hospital, Dispensary, Veterinary Hospital, Dispensary	
Airport, Helipad, Tourist site	
Power line, with pylons surveyed, with poles unsurveyed	

NOTES :-

Heights are in metres and above Indian mean sea level
Contours are approximate
This sheet has been compiled from 1:25,000 survey
A relative height, 8, represents the appropriate height in metres between the top and bottom of a
steep slope
Unmetalled roads are motorable and cart tracks generally passable in dry season
Tanks shown dry, in this area usually contain water from October to February
Temples with gopurams are shown thus:
Head pump is shown thus:

COMPILATION INDEX

A	Surveyed during 1988-89, Updated for major details during 2004-05.
---	--

Projection - UTM Datum - WGS 84

Magnetic Variation from True North about 2° West in 2005.
(Annual change negligible)

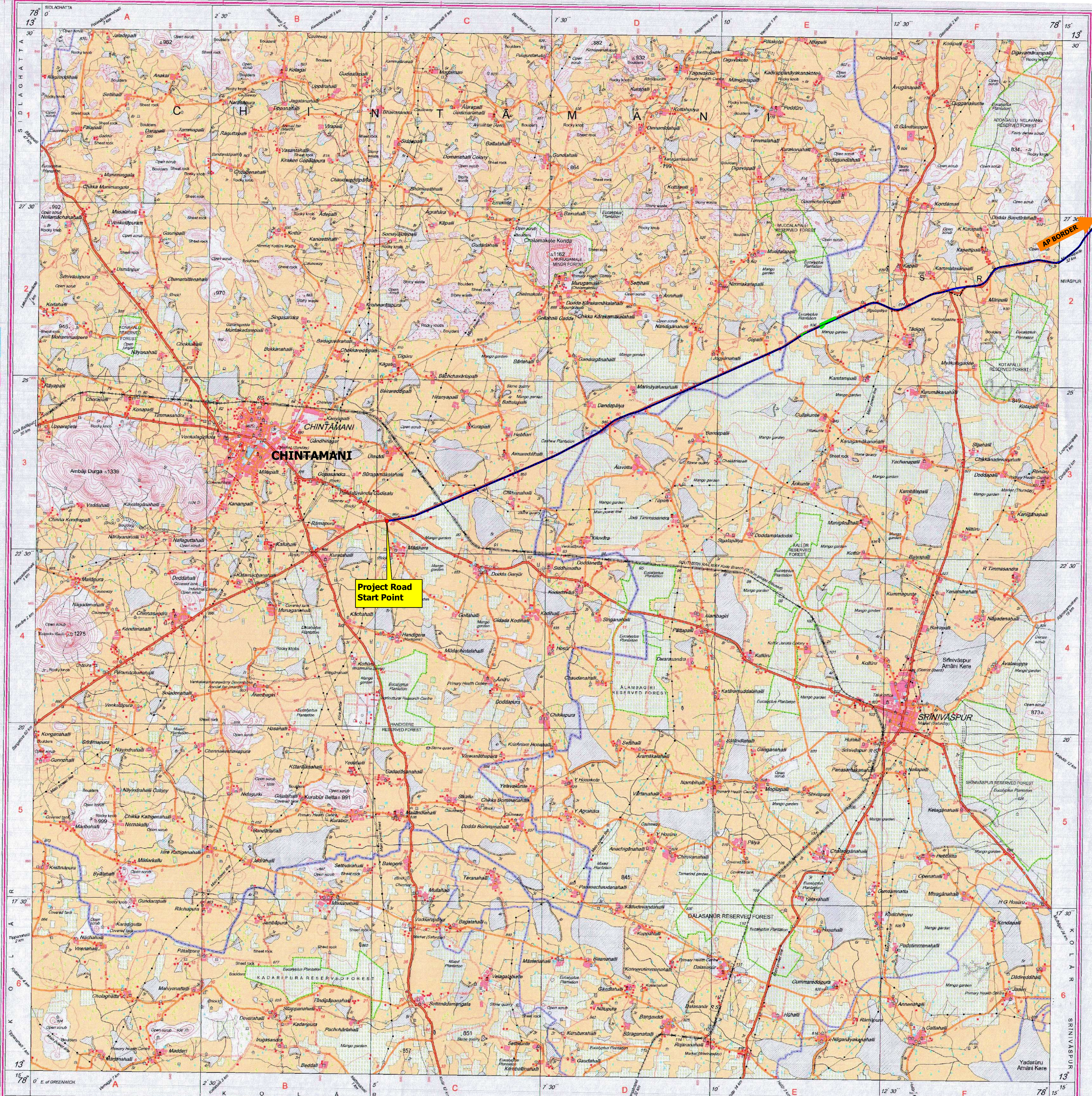
1:50,000
500 m to 1 cm
2 cm to 1 km
CONTOUR INTERVAL 20 METRES

For further details about this map, please contact
Director,
Karnataka Geo-Spatial Data Centre,
Survey of India, Kormangala II Block,
Bangalore.

WEBSITE - www.surveyofindia.gov.in

Reproduction in whole or part by any means is prohibited

MAP SHOWING DIVERTED FOREST LAND AND
PROJECT ALIGNMENT ON SURVEY OF INDIA
TOPOSHEET IN 1:50000 SCALE



LEGEND

- Proposed Centerline
- Existing Centerline
- Forest Area to be Acquired

CLIENT



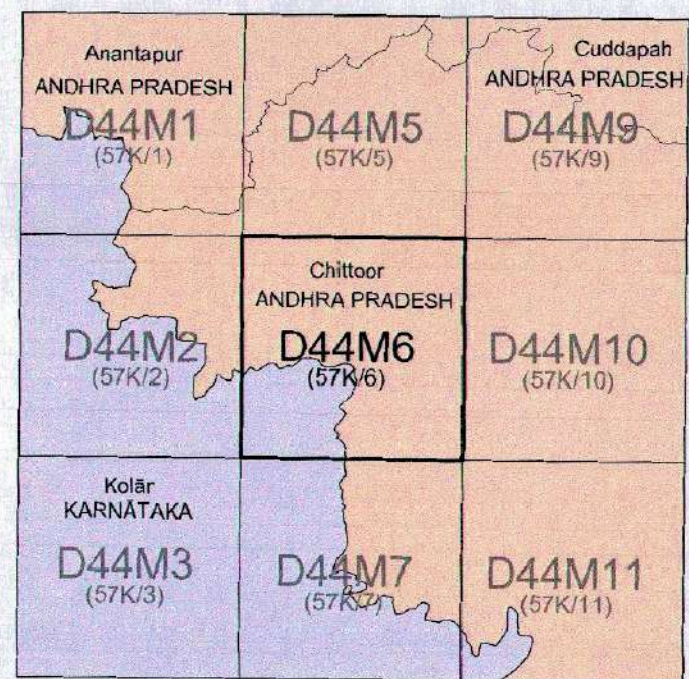
Government of Karnataka
Public Works, Ports & IWT Department
Karnataka State Highways Improvement Project

PROJECT

PACKAGE- 1 (B) TWO LANING WITH PAVED SHOULDER
OF CHINTHAMANI TO AP BORDER (KM 47.23 TO KM
86.977 OF SH-82, LENGTH 39.8 KMS) IN THE STATE OF
KARNATAKA, INDIA ON HYBRID ANNUITY BASIS.



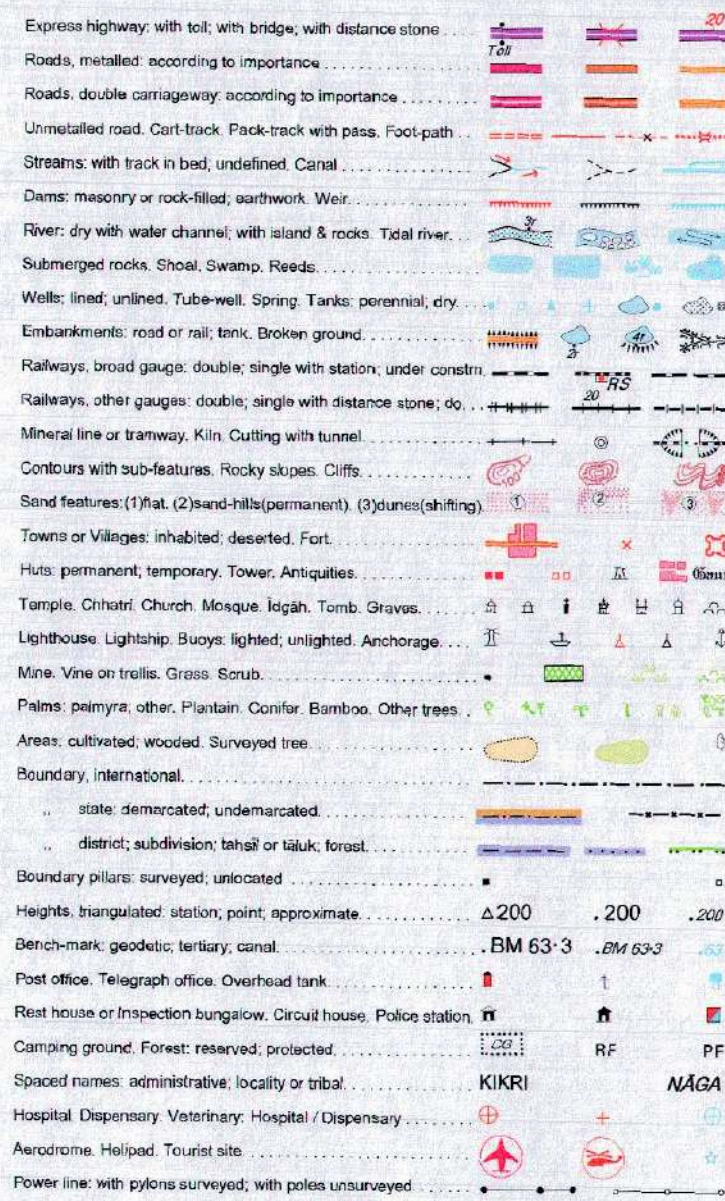
No. D44M6
Scale 1:50,000



भारतीय सर्वेक्षण विभाग SURVEY OF INDIA

1st Edition 2011. Price : Rs. 77/-

CONVENTIONAL SYMBOLS



REFERENCE

NH 205 National Highway No. 205

NOTES

Heights are in metres and above Indian mean sea level.
Contours are approximate.
A relative height e.g. 80 represents the approximate height, in metres, between the top and bottom of a steep slope.
The hatched slope numbers along roads and the railways are shown in standard type e.g. 1:2 whereas measurements are shown in upright type e.g. 1:2.
Tanks shown in this area usually contain water from July to December.
Wells and tube-wells are numerous throughout the sheet; only the important ones have been shown.
All unmetalled roads are narrow and cart tracks are in dry season.

COMPILATION INDEX

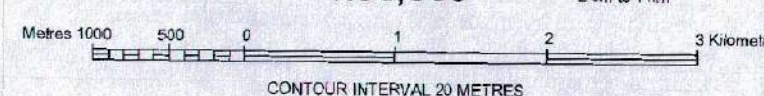
A. Surveyed during 1988-89. Updated for major details during 2004-05.



Projection - UTM Datum - WGS 84

Magnetic Variation from True North about 1° West in 2005.
(Annual change negligible)

1:50,000



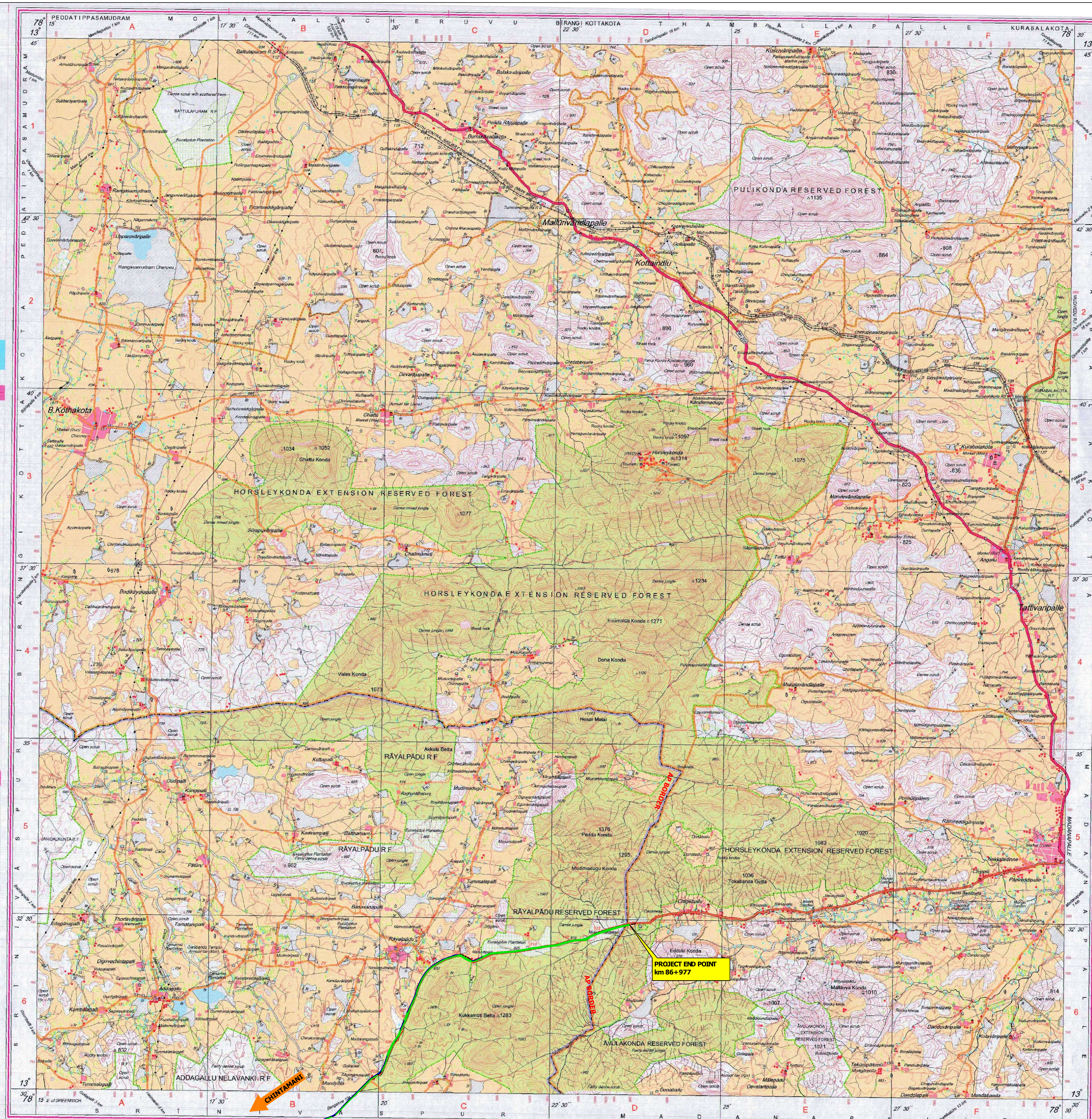
For further details about this map, please contact

Director
Karnataka Geo-Spatial Data Centre
Survey of India, Sarjapura road, Koramangala II Block,
Bangalore.

WEBSITE - www.surveyofindia.gov.in

Reproduction in whole or part by any means is prohibited

MAP SHOWING DIVERTED FOREST LAND AND
PROJECT ALIGNMENT ON SURVEY OF INDIA
TOPOSHEET IN 1:50000 SCALE



LEGEND

- Proposed Centerline
- Existing Centerline
- Forest Area to be Acquired

CLIENT



Government of Karnataka
Public Works, Ports & IWT Department
Karnataka State Highways Improvement Project

PROJECT

PACKAGE- 1 (B) TWO LANING WITH PAVED SHOULDER
OF CHINTHAMANI TO AP BORDER (KM 47.23 TO KM
86.977 OF SH-82, LENGTH 39.8 KMS) IN THE STATE OF
KARNATAKA, INDIA ON HYBRID ANNUITY BASIS.