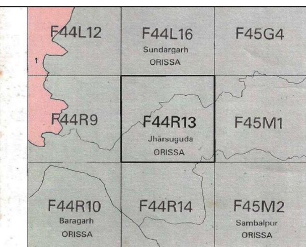


TOPO MAP SHOWING PROJECT AREA OF 132 KV D/C TRANSMISSION LINE FROM 132/33 KV GRID SUBSTATION BRAJRAJNAGAR TO PROPOSED 132/33 KV GRID SUBSTATION AT LAKHANPUR IN JHARSUGUDA DISTRICT UNDER ODISHA STATE.



1 Raigarh, CHHATTISGARH.

भारतीय सर्वेक्षण विभाग SURVEY OF INDIA

1st Edition 2009. PRICE ₹ 110/- Price : Rs. 60 / -

CONVENTIONAL SYMBOLS

- Express highway, with toll; with bridge with distance shown.
- Roads, modified, according to importance.
- Roads, double carriageway, according to importance.
- Unimproved road. Cart-track. Pack-track with pass. Foot-path.
- Stream: with track in bed; underflow. Canal.
- Dam: masonry or rock-filled; earthenwork. Wall.
- Flood: dry with water channel, with island & rocks. Tidal river.
- Submerged road. Road, bridge, road.
- Wells: hand, windmill, tubewell, spring, tanker, perennial, dry.
- Embankment: road or rail; tank. Broken ground.
- Railways, broad gauge: double, single with station, under construction.
- Railways, other gauges: double, single with station, under construction.
- Mineral line or railway. Kiosk. Cutting with tunnel.
- Contours with spot-heights. Rocky slopes. Cliff.
- Sand features: (dune, dune-like, grass-covered). (dune-like, bare).
- Towns or villages: inhabited, deserted, fort.
- Temples, permanent, temporary. Tower. Antiquities.
- Temples, Chhatra, Church, Mosque, Ghat, Tandi, Dargah.
- Lighthouses, Lightship. Buoy: lighted, unlighted. Anchorage.
- River, stream, other, Perennial, Canals, Barabari, Other river.
- Assets: cultivated, wooded, surveyed tree.
- Boundary, international.
- State: demarcated, undemarcated.
- district, subdivision, taluk or talika, forest.
- Boundary affairs: surveyed, uncoloured, village jurisdiction.
- Height, triangulation station point, approximate.
- Bench-mark, geodetic, levelling, canal.
- Post office, Telegraph office, Government tank, Police station.
- Hut house or inspection bungalow. Circuit house, Police station.
- Camping ground, forest: reserved, protected.
- Survey names: administrative, locality or tribal.
- Hospital, Dispensary, Veterinary hospital.
- Airport, Helipad, Tourist site.
- Power line: with pylons survey.

Dy. General Manager (Elect.)
EHT Construction Division
OPTCL, Jharsuguda.

NOTES :-
Heights are in metres and above Indian mean sea level.
Contours are approximate.
A water height, in parentheses, the approximate height, in metres, between the top and bottom of a steep slope.
Unimproved roads and cart-tracks in this sheet are generally not suitable in the season.
Tanks shown dry, in this area usually contain water from July to December.
The kilometre stone numbers along the railway and roads are shown in short type, e.g. 1, whereas mileposts are shown in long type, e.g. 1.7.
The triangulated heights and contours in this sheet have not been adjusted to the heights of the earth-tied bench-marks and may not be strictly in accordance with them.
The common boundary between Bursaripatna P.F. and Ghumal P.F. has not been shown for want of reliable information.
Hut pump is shown thus.

COMPILED INDEX

A. Compiled from 1:25,000 survey 1979-80. Updated for major details during 2000-05.

Projection - UTM Datum - WGS 84

Magnetic Variation from True North about 2° West in 2005, (increasing by about 1' annually).

Scale 1:50,000

CONTAIN INTERVAL 20 METRES

For further details about this map, please contact

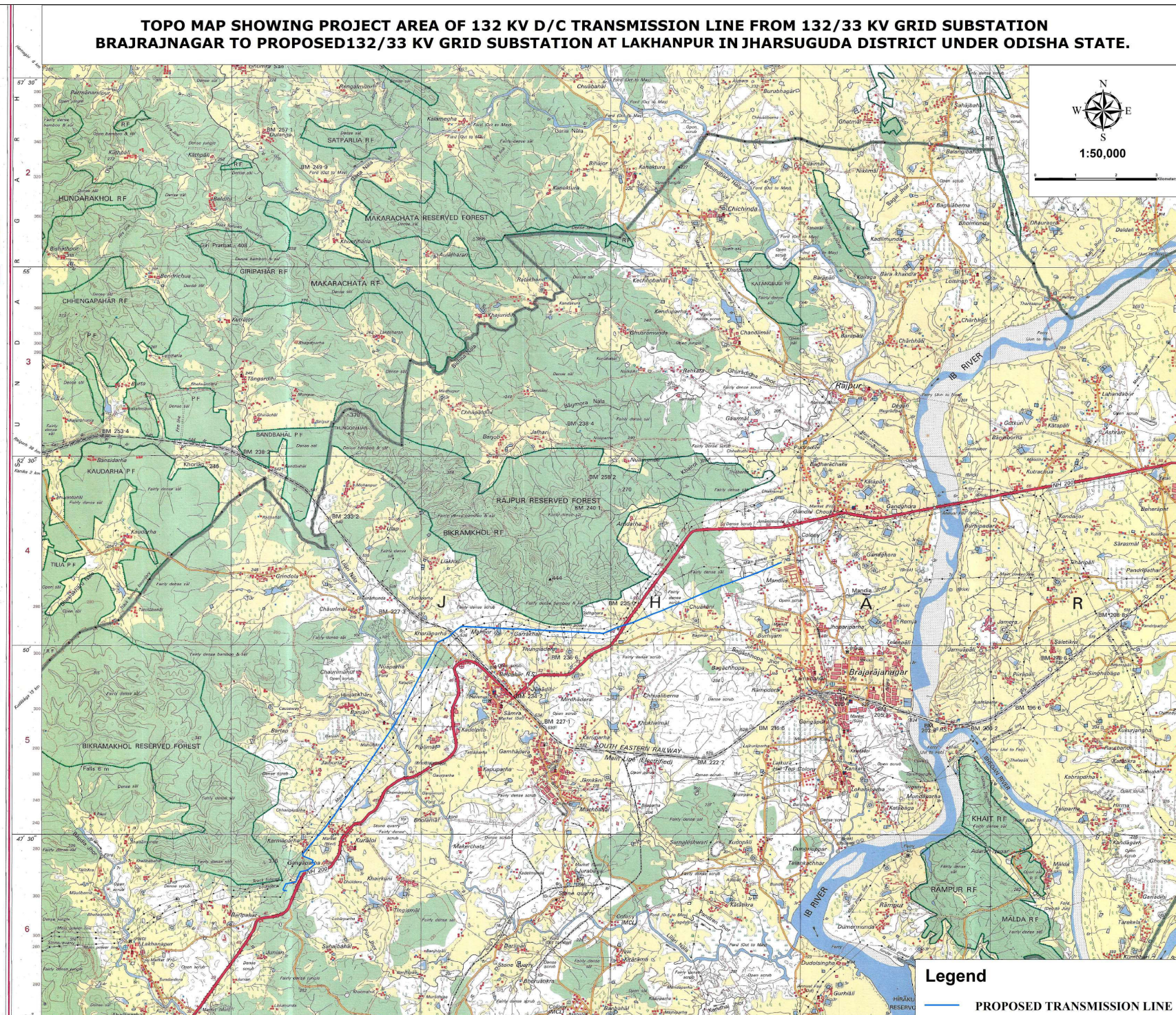
Director

Orissa Geo-Spatial Data Centre

Survey of India

Survey Bhawan, PO - R R Laboratory

Bhubaneswar.



1:50,000

Legend
— PROPOSED TRANSMISSION LINE