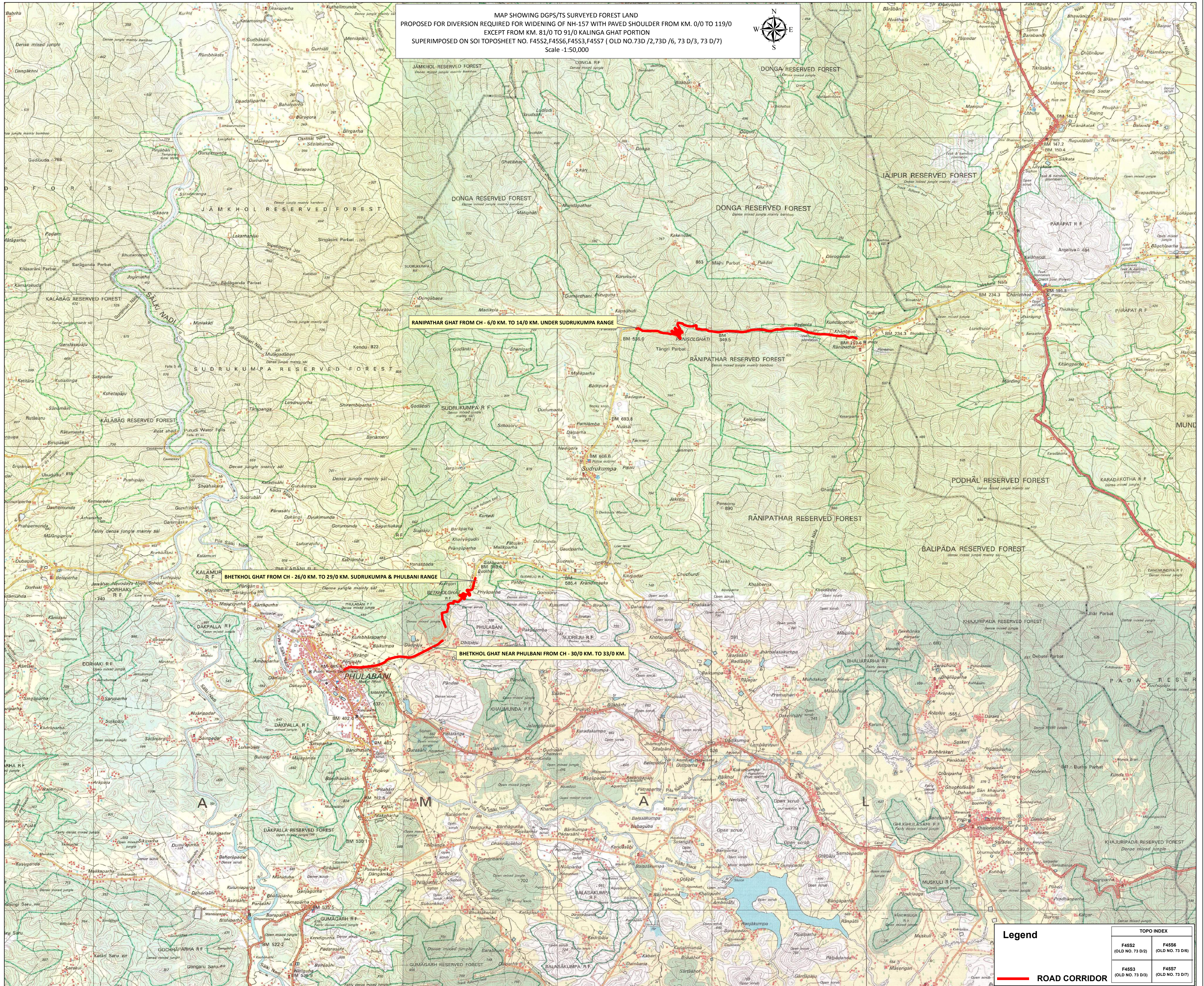
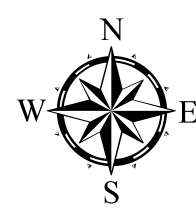


MAP SHOWING DGPS/TS SURVEYED FOREST LAND
PROPOSED FOR DIVERSION REQUIRED FOR WIDENING OF NH-157 WITH PAVED SHOULDER FROM KM. 0/0 TO 119/0
EXCEPT FROM KM. 81/0 TO 91/0 KALINGA GHAT PORTION
SUPERIMPOSED ON SOI TOPOSHEET NO. F45S2,F45S6,F45S3,F45S7 (OLD NO.73D /2,73D /6, 73 D/3, 73 D/7)
Scale -1:50,000



Legend

ROAD CORRIDOR

| TOPO INDEX | |
|---------------------------|---------------------------|
| F45S2 (OLD NO. 73 D/2) | F45S6 (OLD NO. 73 D/6) |
| F45S3 (OLD NO. 73 D/3) | F45S7 (OLD NO. 73 D/7) |