

KANGRA DISTRICT.
KATHUA DISTRICT.
GURDASPUR DISTRICT.

RESTRICTED

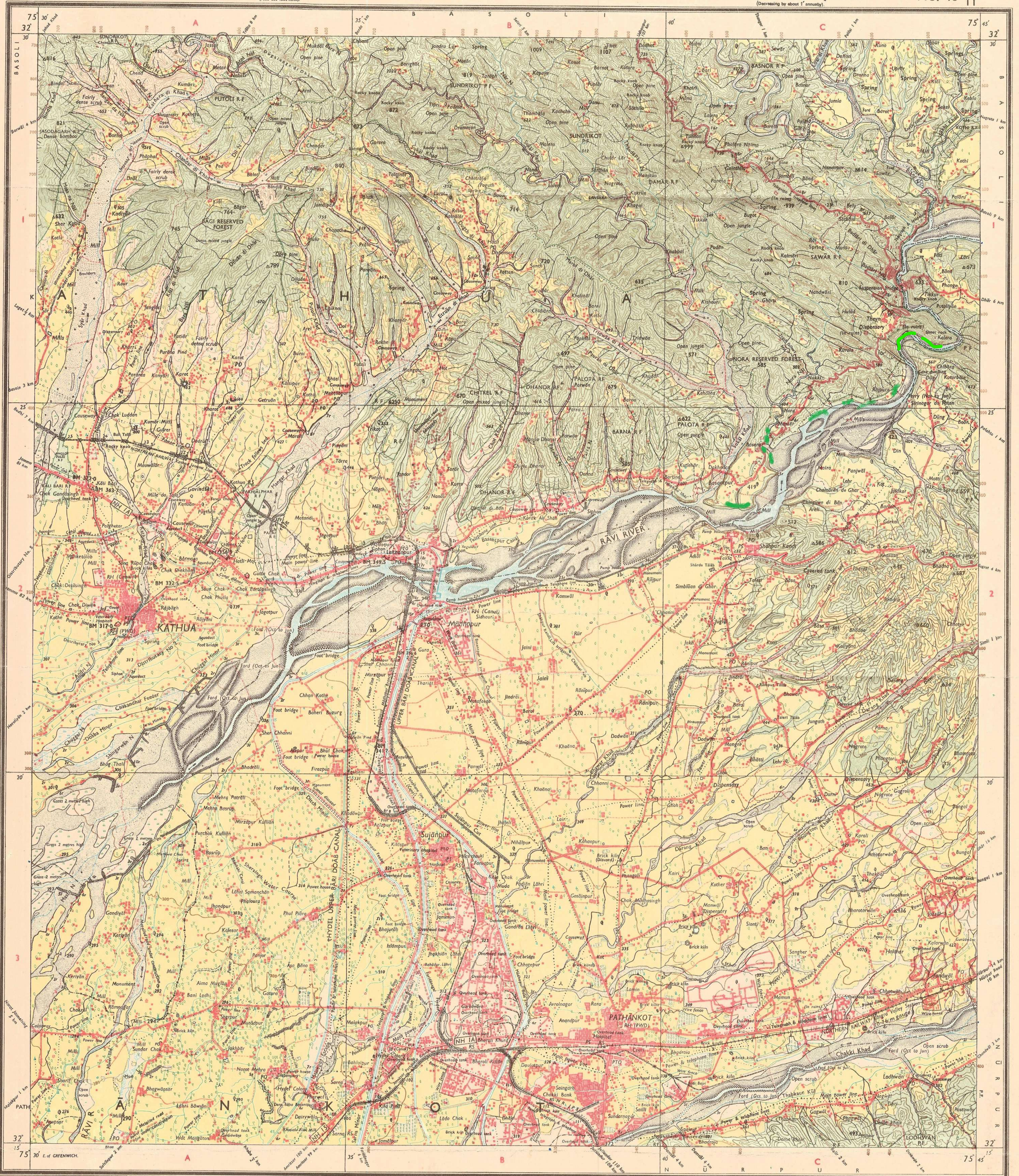
Surveyed 1967-68
(Also see foot-note)

HIMACHAL PRADESH JAMMU & KASHMIR, PUNJAB

SECOND EDITION

Magnetic Variation from True North about 1° East in 1970.
(Decreasing by about 1' annually)

No. 43 P/11



Revised 1967-68 (NWC 57/0.0.9.1.50,000-151/279)
Roads: metalled, according to importance: distance stone
unmetalled, do. do. bridge
Cart-track, pack-track and pass. Foot-path with bridge
Bridges: with pier: without. Causeway. Ford or Ferry
Streams: with track in bed: unflooded. Canal
Dams: masonry or rock-filled: earthwork. Well
River banks: shelving: steep. 3 to 6 metres: over 6 metres
dry with water channel: with island & rocks: tidal river
Submerged rocks. Shoal. Swamp. Reeds
Wells: lined: unlined. Tube well. Spring. Tanks: perennial: dry
Embankments: road or rail: tank. Broken ground
Railways: broad gauge: double: single with station: under construction
other gauges: do. do. with station: do. do.
Light railway or tramway. Telegraph line. Cutting with tunnel
Contours with sub-features: Rocky slopes. Cliffs
Sand features: (flat) sandhills and dunes (surge) shifting dunes

Index to Sheets

43/6	43/7	43/8
43/9	43/10	43/11
43/12	43/13	43/14

Published under the direction of Major-General K.L. Khosla, B.Sc., B.E. (Civil), P.E., F.R.S., F.I.C., M.A.S.C.E. (U.S.A.), Surveyor General of India, 1977.

500 m to 1 cm
1:50,000
2 cm to 1 km
7 Kilometres

HEIGHTS & CONTOURS IN METRES
CONTOUR INTERVAL 20 METRES

Water features are shown in blue where they generally contain water.
Cultivated areas are coloured yellow.
The exterior boundaries of areas of Reserved or Protected Forests are shown by green ribbons.
Contours are approximate.
A relative height, e.g., 3r, marked along a canal, indicates the height of the top of the canal embankment above the adjacent country.
Canal distance stones in Gurdaspur District are 1,000 feet apart and every fifth stone is shown whereas in other areas these are 1,000 metres apart and every one is shown.
The triangulated heights and contours in this sheet have not been adjusted to the heights of the spirit-levelled bench-marks and may not be strictly in accordance with them.
Permission to use unmetalled roads and cart-tracks along canals is required from the Irrigation authorities.
Tanks, shown dry, in this area usually contain water from July to March.
The area adjoining the Ravi River is liable to change owing to continual fluctuation in the course of the river.
This sheet has been compiled from 1:25,000 survey carried out during 1967-68 with additions and alterations based on verification survey carried out during 1972-73, on 1:50,000 and 1974-75 on 1:25,000 scale.
The forest areas in this sheet are Government Reserves. Their boundaries where demarcated have been surveyed as pointed out by the local official.
Unmetalled roads and cart-tracks in this sheet are usually motorable in dry season.
The state boundaries between Punjab and Jammu & Kashmir and Punjab and Himachal Pradesh States have been surveyed as pointed out by the local officials on the ground but have not been verified by the Punjab Government.

Administrative Index
KATHUA
JAMMU & KASHMIR
GURDASPUR
PUNJAB
KANGRA, H.P.

Towns or Villages: inhabited: deserted: Fort: Antiquities: durt
Huts: permanent: temporary: Tower: Lighthouse: Temple: Chhatra: Church: Mosque: Idgah: Tomb: Graves: A
Lighthouse: Lighthouse: Buoy: Lighted: unlighted: Anchorage: A
Mine: Vine: on trellis: Grass: Scrub: Palms: papyrus: other: Plantain: Conifer: Bamboo: Other trees: A
Boundary: international: state demarcated, undemarcated: district: sub-division: taluk: forest: A
Boundary pillars surveyed: unlocated: village: triangulation: A
Heights: triangulated: station: point: approximate: A
Bench mark: geodetic: tertiary: canal: BM 633: BM 633: A
Post office: Telegraph office: Combined office: Police station: PO: TO: PTO: PS
Bungalows: dak: or travellers: inspection: Rest-house: DB: R/Canal: R/Forest: A
Circuit house: Camping ground: Forest: reserved: protected: CH: CG: R: F: A
Spaced names: administrative: locality or tribal: KIKRI: NAGA

REFER TO THIS MAP AS:- I:50,000
SHEET 43 P/11 SECOND EDITION

INDIA

Forest Land :-

RESTRICTED
This map is NOT to be published, copied or reproduced in print or in whole or in part by any other means: should be kept in safe custody and handled by authorized persons only.

REFERENCES

NH 1A National Highway No. 1A.

N R / P S Northern Railway Jullundur Pathankot Section.