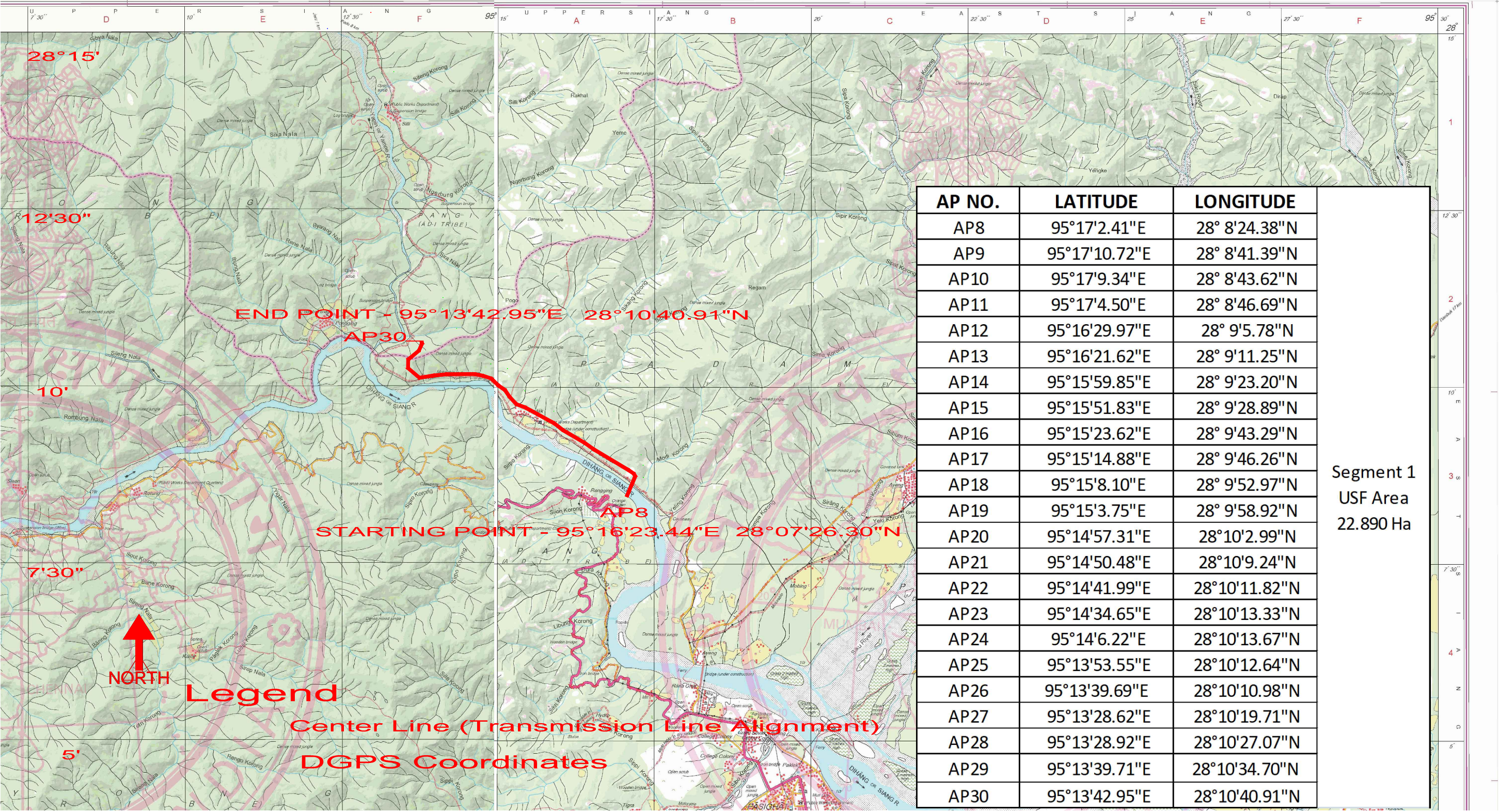


PROPOSED ROUTE ALIGNMENT MAP FOR 132 KV  
TRANSMISSION LINE FROM PASIGHAT (OLD) - MARIYANG



AP NO.	LATITUDE	LONGITUDE
AP8	95°17'2.41"E	28° 8'24.38"N
AP9	95°17'10.72"E	28° 8'41.39"N
AP10	95°17'9.34"E	28° 8'43.62"N
AP11	95°17'4.50"E	28° 8'46.69"N
AP12	95°16'29.97"E	28° 9'5.78"N
AP13	95°16'21.62"E	28° 9'11.25"N
AP14	95°15'59.85"E	28° 9'23.20"N
AP15	95°15'51.83"E	28° 9'28.89"N
AP16	95°15'23.62"E	28° 9'43.29"N
AP17	95°15'14.88"E	28° 9'46.26"N
AP18	95°15'8.10"E	28° 9'52.97"N
AP19	95°15'3.75"E	28° 9'58.92"N
AP20	95°14'57.31"E	28°10'2.99"N
AP21	95°14'50.48"E	28°10'9.24"N
AP22	95°14'41.99"E	28°10'11.82"N
AP23	95°14'34.65"E	28°10'13.33"N
AP24	95°14'6.22"E	28°10'13.67"N
AP25	95°13'53.55"E	28°10'12.64"N
AP26	95°13'39.69"E	28°10'10.98"N
AP27	95°13'28.62"E	28°10'19.71"N
AP28	95°13'28.92"E	28°10'27.07"N
AP29	95°13'39.71"E	28°10'34.70"N
AP30	95°13'42.95"E	28°10'40.91"N

Segment 1  
USF Area  
22.890 Ha