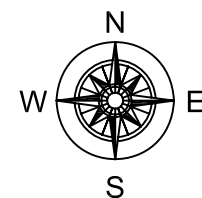


Name of work :- Widening And Strengthening Four Lane of  
Sayla Sudamda Paliyad Road  
KM. 00/00 TO 25/600

SHEET  
1 TO 3



**OPEN SERIES MAP**  
**No. F42L6**  
Scale 1:50,000

**CONVENTIONAL SYMBOLS**

**REFERENCE**  
NH 54 National Highway No. 54.

**NOTES :-**  
Heights are in metres and above Indian mean sea level.  
Contours are approximate.  
A relative height, e.g., 100, represents the approximate height, in metres, between the top and bottom of a steep slope.  
Tanks, shown dry, in this area usually contain water from July to September.  
A relative height, e.g., 100, marked along a canal, indicates the height of the top of the canal embankment above the adjacent country.

**COMPILED INDEX**  
A. Surveyed during 1955-57. Updated for major details during 2001-02 and 2005-06.

**Projection - UTM Datum - WGS 84**  
Magnetic Variation from True North about 1° West in 2005.  
(Decreases by about 1° annually.)

**Scale 1:50,000**  
500 m to 1 cm  
2 cm to 1 km

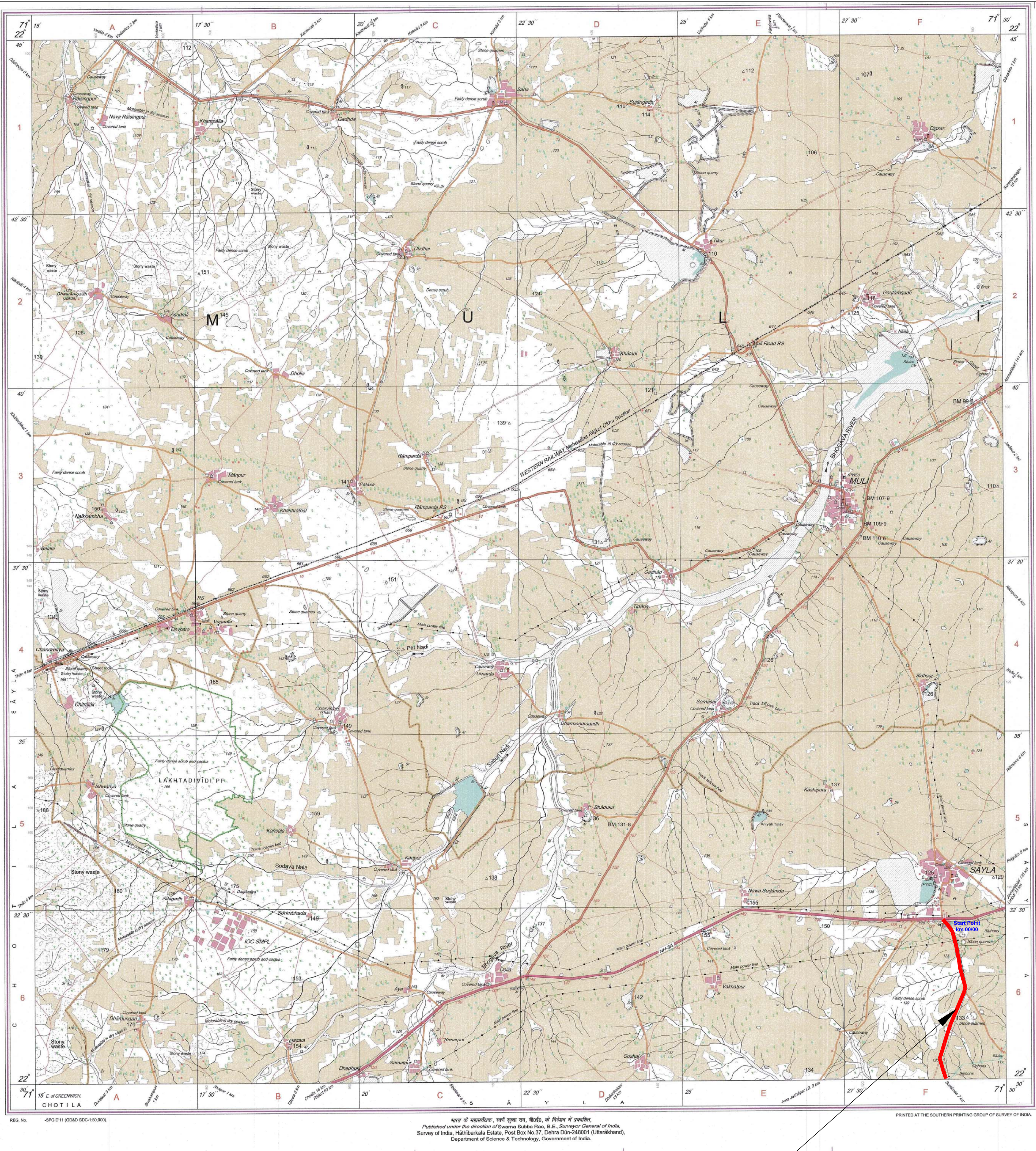
**CONTOUR INTERVAL 20 METRES**

For further details about this map, please contact  
Director  
Custodian, Damin & Du Geo Spatial Data Centre  
Survey of India, Sector-10(A)  
Gandhinagar.

WELSHITE - www.surveyofindia.gov.in

Reproduction in whole or part by any means is prohibited without the written permission of Survey of India, the National Mapping Agency.

GOVERNMENT OF INDIA COPYRIGHT, 2011.



Sayla Sudamda Paliyad Road  
KM.00/00 TO 25/600 AREA:  
Area : 35.2 H.A

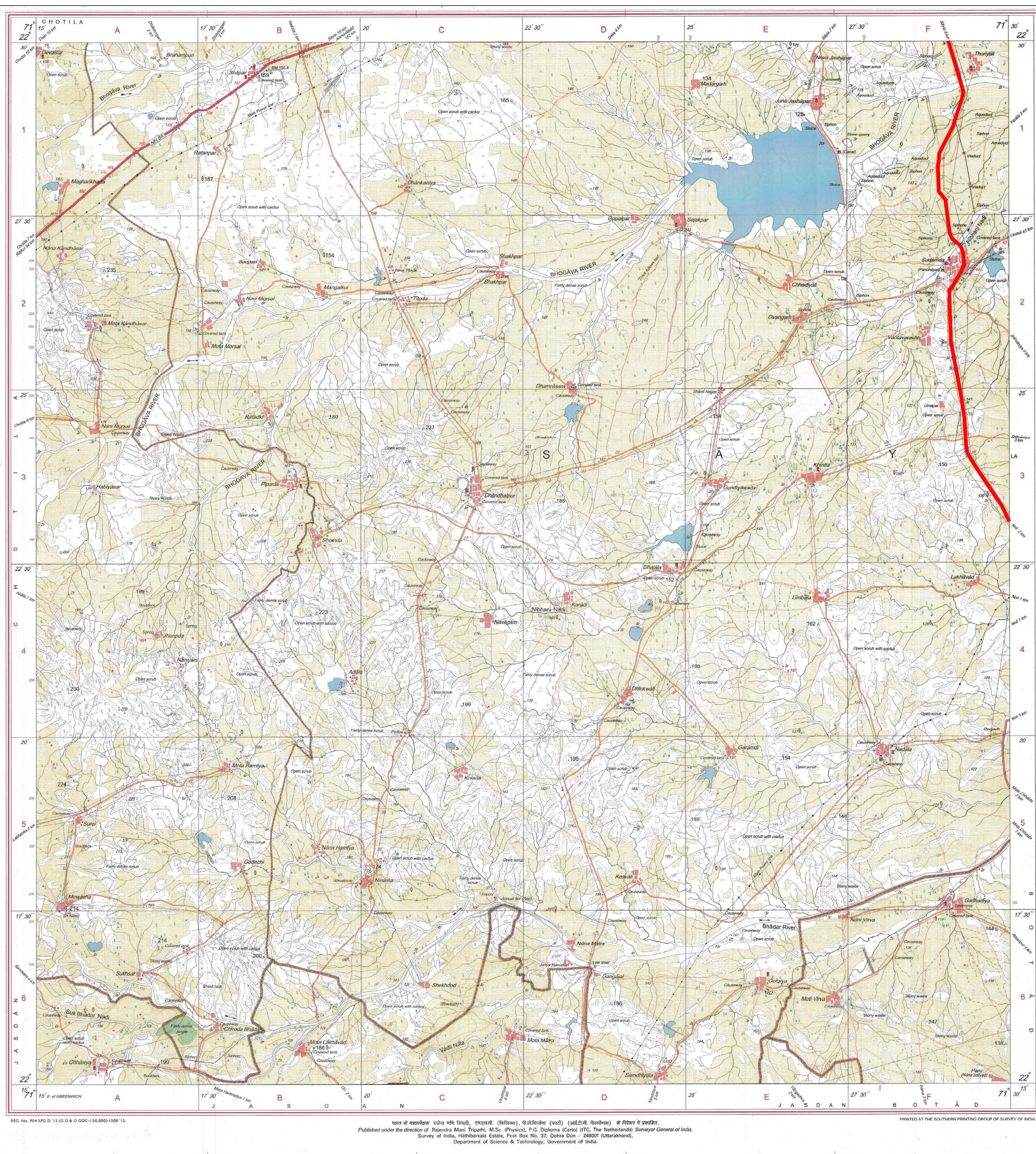
Sayla Sudamda Paliyad Road			
POINT	CHAINAGE	LATITUDE	LONGITUDE
START POINT	Ch.00/000 M	22°32'17.41"N	71°29'1.17"E
END POINT	Ch. 25/600 M	22°18'56.69"N	71°30'18.11"E

Dy. Executive Engineer  
(R & B) Sub Dn.No.1  
Surendranagar

Executive Engineer  
(R & B) Division  
Surendranagar



**Name of work :- Widening And Strengthening Four Lane of  
Sayla Sudamda Paliyad Road  
KM. 00/00 TO 25/600**



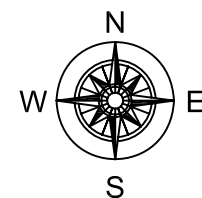
Dy. Executive Engineer  
(R & B) Sub Dn.No.1  
Surendranagar

Executive Engineer  
(R & B) Division  
Surendranagar



Name of work :- Widening And Strengthening Four Lane of  
Sayla Sudamda Paliyad Road  
KM. 00/00 TO 25/600

SHEET  
3 TO 3



OPEN SERIES  
MAP  
No. F42L11  
Scale 1:50,000

F42L6 (41N/6)	F42L10 (41N/10)	F42L14 (41N/14)
F42L7 (41N/7)	2 Surendranagar GUJARAT F42L11 (41N/11)	F42L15 (41N/15)
F42L8 (41N/8)	F42L12 (41N/12)	F42L16 (41N/16)

1 Amrel, GUJARAT.

भारतीय सर्वेक्षण विभाग  
SURVEY OF INDIA  
1st Edition 2011. Price : Rs. 70/-

CONVENTIONAL SYMBOLS

Express highway, with lot, with bridge, with distance stone	...
Roads, metalled, according to importance	...
Unmetalled road, Cart-track, Pick-track with pass, Foot-path	...
Streams, with track in bed, underlined, Canal	...
Dams, masonry or rock-filled, earthwork, Weir	...
River, dry with water channel, with island & rocks, Tidal river	...
Submerged rocks, Shrub, Swamp, Marsh	...
Wells, hand, wind, Tube-well, Spring, Tanks, permanent, dry	...
Embankments, road or rail, track, Broken ground	...
Railways, broad gauge, double, single with station, under constr.	...
Railways, other gauges, double, single with station, under constr.	...
Mineral line or tramway, Kiln, Cutting with tunnel	...
Contours with sub-features, Rocky slopes, Cliffs	...
Spur features (hill, Clouse, Hills, mountains, Clouse, hills)	...
Towns or Villages, inhabited, deserted, Fort	...
Hills, permanent, temporary, Tower, Antennae	...
Temple, Chhatra, Chhatra, Mosque, Light, Tomb, Graves	...
Lighthouse, Lightship, Buoy, lighted, unlighted, Anchorage	...
Mine, Vine on trails, Grass, Scrub	...
Police station, other, Police, Outpost, Station, Other, trees	...
Areas, cultivated, wooded, Surveyed tree	...
Boundary, international	...
state, demarcated, undemarcated	...
district, subdivision, taluk or block, forest	...
Boundary pillars, surveyed, undecoded	...
Height, triangulation, station, point, approximate	...
Bench-mark, geodetic, levelling, canal	...
Post office, Telegraph office, Overhead tank	...
Road house or inspection house, Circuit house, Police station	...
Camping ground, Forest, reserved, protected	...
Hospital, Dispensary, Veterinary Hospital / Dispensary	...
Aerodrome, Helipad, Tourist site	...
Power line, with pylons, surveyed, with poles, unsurveyed	...

NOTES :-  
Heights and contours are in metres.  
Contours are approximate.  
Unmetalled roads in this sheet are generally not suitable in dry season.  
Tanks, shown dry in this sheet usually contain water from July to December.  
Collection is periodic and dependent on rainfall.

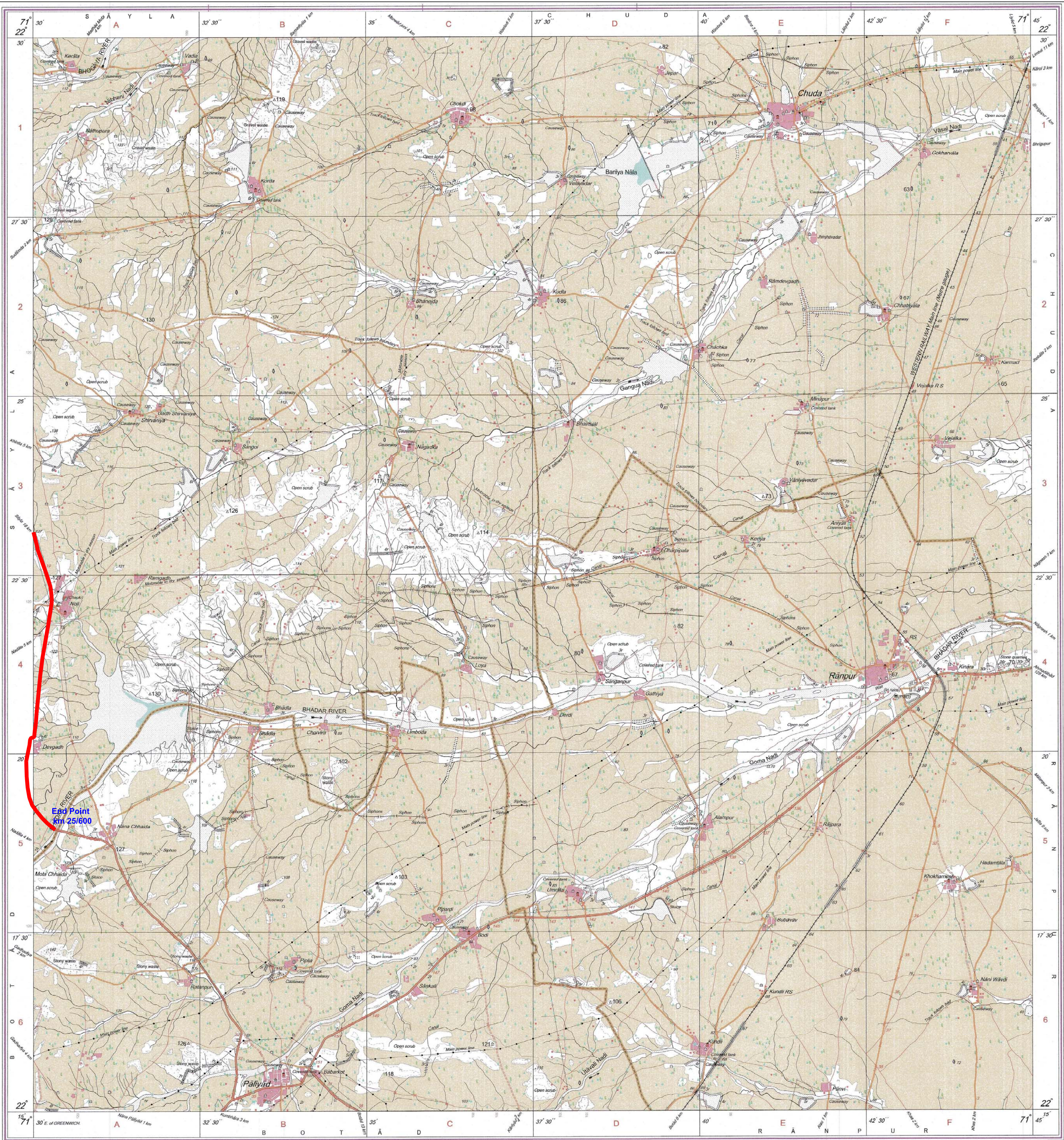
COMPILATION INDEX	A. Surveyed during 1966-67. Updated for major details from 1:25,000 survey, 2001-02.
-------------------	--------------------------------------------------------------------------------------

Projection - UTM Datum - WGS 84  
Magnetic Variation from True North about 1/2° West in 2005.  
(Decreasing by about 1" annually).  
1:50,000  
300 m to 1 cm  
2 cm to 1 km  
CONTOUR INTERVAL 30 METRES

For further details about this map, please contact  
Director  
Gujarat, Damam & Diu Geo-Spatial Data Centre  
Survey of India, Sector 10-A  
Gandhinagar.

WEBSITE - www.surveyofindia.gov.in  
Reproduction in whole or part by any means is prohibited  
without the written permission of Survey of India, the  
National Mapping Agency.

GOVERNMENT OF INDIA COPYRIGHT, 2011.



REG. No. - SPG D11 (GDMD GDC-1:50,000)  
Printed under the direction of Swarna Subba Rao, B.E., Surveyor General of India,  
Survey of India, Hattibankala Estate, Post Box No.37, Dehra Dun-248001 (Uttarakhand)  
Department of Science & Technology, Government of India.  
PRINTED AT THE SOUTHERN PRINTING GROUP OF SURVEY OF INDIA

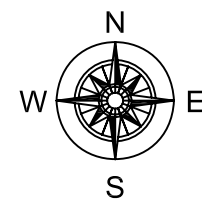
Dy. Executive Engineer  
(R & B) Sub Dn.No.1  
Surendranagar

Executive Engineer  
(R & B) Division  
Surendranagar



Name of work :- Widening And Strengthening Four Lane of  
Sayla Muli Road  
KM. 00/00 TO 10/890

SHEET  
1 TO 1



**OPEN SERIES MAP**  
**No. F42L6**  
Scale 1:50,000

**CONVENTIONAL SYMBOLS**

**REFERENCE**  
NH 54 National Highway No. 54.

**NOTES :-**  
Heights are in metres and above Indian mean sea level.  
Contours are approximate.  
A relative height, e.g., 100, represents the approximate height, in metres, between the top and bottom of a steep slope.  
Tanks, shown dry, in this area usually contain water from July to September.  
A relative height, e.g., 100, marked along a canal, indicates the height of the top of the canal embankment above the adjacent country.

**COMPILED INDEX**  
A. Surveyed during 1955-57. Updated for major details during 2001-02 and 2005-06.

**Projection - UTM Datum - WGS 84**  
Magnetic Variation from True North about 1/2° West in 2005.  
(Decreases by about 1° annually.)

**Scale 1:50,000**  
500 m to 1 cm  
2 cm to 1 km  
3 Kilometres

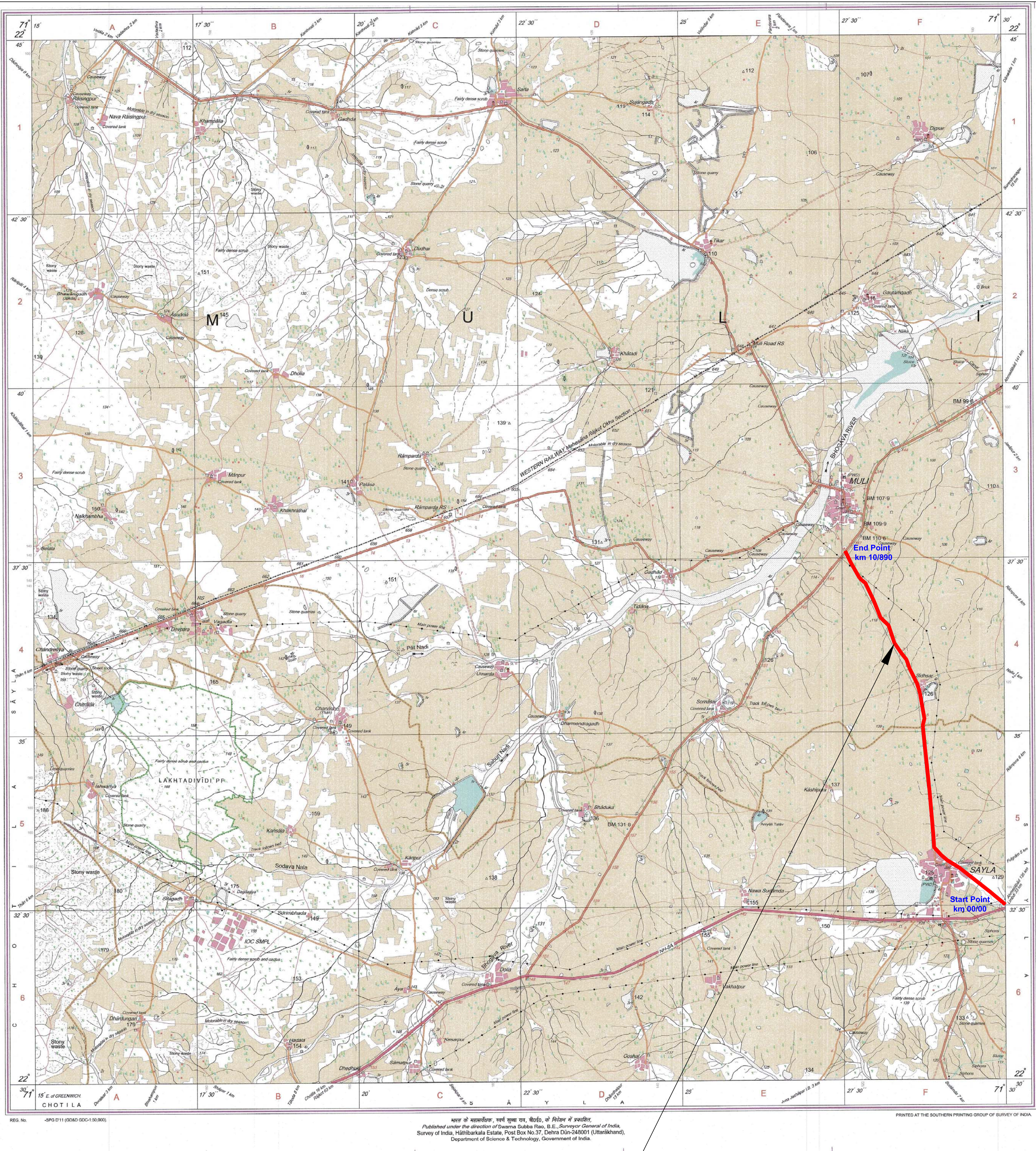
**CONTOUR INTERVAL 20 METRES**

For further details about this map, please contact  
Director  
Custodian, Damin & Du Geo Spatial Data Centre  
Survey of India, Sector-10(A)  
Gandhinagar.

WELSHITE - www.surveyofindia.gov.in

Reproduction in whole or part by any means is prohibited  
without the written permission of Survey of India, the  
National Mapping Agency.

GOVERNMENT OF INDIA COPYRIGHT, 2011.



Sayla - Muli Road  
KM.00/00 TO 10/890  
Area : 14.97 H.A

Sayla - Muli Road			
POINT	CHAINAGE	LATITUDE	LONGITUDE
START POINT	Ch.00/00 M	22°32'27.36"N	71°30'07.7"E
END POINT	Ch. 10/890 M	22°37'36.36"N	71°27'33.98"E

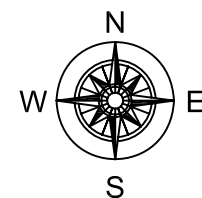
Dy. Executive Engineer  
(R & B) Sub Dn.No.1  
Surendranagar


Executive Engineer  
(R & B) Division  
Surendranagar



Name of work :- Widening And Strengthening Four Lane of  
Muli Surendranagar Road  
KM. 126/00 TO 144/700

SHEET  
1 TO 2





निर्वात के लिए नहीं NOT FOR EXPORT

OPEN SERIES  
MAP

No. F42L6

Scale 1:50,000

F42L1 (41N/1)	F42L5 (41N/5)	F42L9 (41N/9)
1 Rajkot GUJARAT F42L2 (41N/2)	Surendranagar GUJARAT F42L6 (41N/6)	F42L10 (41N/10)
F42L3 (41N/3)	F42L7 (41N/7)	F42L11 (41N/11)

2 Bhavnagar, GUJARAT  
3 Ahmedabad, GUJARAT.

भारतीय सर्वेक्षण विभाग

1st Edition 2011. Price : Rs. 70/-

SURVEY OF INDIA

CONVENTIONAL SYMBOLS

Express highway with toll; with bridge with distance stone  
Roads, metalled according to importance  
Roads, double carriage-way according to importance  
Unmetalled road. Cart-track. Pack-track with pass. Foot-path  
Stream with rock in bed, underfoot. Canal  
Dam, masonry or rock-filled, with gate. Weir  
River, dry with water channel, with island & rocks. Tidal river  
Submerged rocks. Shoal. Swamp. Reeds  
Wells: lined, unlined. Tube-well. Spring. Tanks: perennial, dry  
Embarkments: road or rail, tank. Broken ground  
Railways: broad gauge, double single with station under shelter  
Railways, other gauges: double single with distance stone, do  
Mineral line or tramway. Kib. Culling with tunnel  
Contours with sub-features. Rocky slopes. Cliffs  
Sand features (1 flat, 2 sand dunes) (3) dunes (shifting)  
Towns or Villages: inhabited, deserted. Fort  
Hills: perennial temporary. Tower/fortification  
Temples, Chattri, Church, Mosque, Ghat, Tomb, Grove  
Lighthouse. Lightship. Buoy: lighted, unlighted. Anchorage  
Mine. Veto on traffic. Grass. Scrub  
Palms: palm-tree, other. Plantain. Coconut. Bamboo. Other trees  
Areas: cultivated, wooded. Surveyed tree  
Boundary: international  
Water: demarcated, undemarcated  
district, subdivision, taluk or taluk, forest  
Boundary pillars: surveyed, uncoloured  
Height, triangulation station, point, approximate  
Bench mark, geodetic, tertiary, canal  
Post office, Overhead tank  
Rest house or Imperial bungalow. Circuit house. Police station  
Camping ground. Forest: reserved, protected  
Speed names: administrative, locality or tribal  
Hospital, Dispensary, Veterinary Hospital/Dispensary  
Aerodrome. Helipad. Tourist site  
Power line: with pylons surveyed, with poles unsurveyed

REFERENCE

NH 54 National Highway No. 54.

NOTES :-

Heights are in metres and above Indian mean sea level.  
Contours are approximate.  
A relative height, e.g., 20, represents the approximate height, in metres, between the top and bottom of a steep slope.  
Tanks, shown dry, in this area usually contain water from July to September.  
A relative height, e.g., 20, marked along a canal, indicates the height of the top of the canal embankment above the adjacent country.

COMPILED INDEX

A. Surveyed during 1955-57. Updated for major details during 2001-02 and 2005-06.

Projection - UTM Datum - WGS 84

Magnetic Variation from True North about 1° West in 2005.  
(Decreases by about 1° annually)

Scale 1:50,000

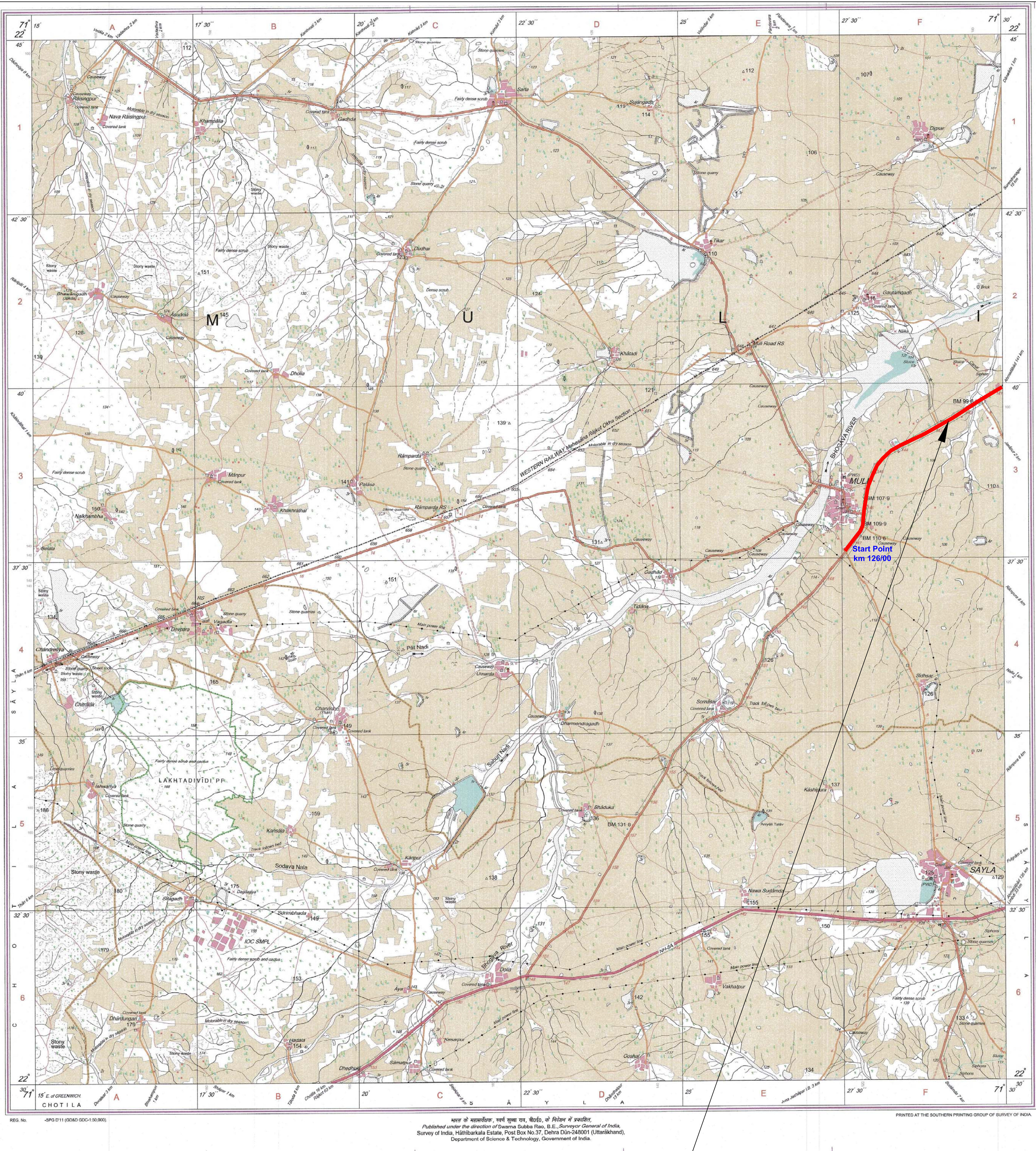
CONTOUR INTERVAL 20 METRES

For further details about this map, please contact  
Director  
Custodian, Damin & Du Geo Spatial Data Centre  
Survey of India, Sector-10(A)  
Gandhinagar.

WELSHITE - www.surveyofindia.gov.in

Reproduction in whole or part by any means is prohibited  
without the written permission of Survey of India, the  
National Mapping Agency.

GOVERNMENT OF INDIA COPYRIGHT, 2011.



Muli - Surendranagar Road  
Km.126/00 TO 144/700  
Area : 25.71 H.A

Muli - Surendranagar Road			
POINT	CHAINAGE	LATITUDE	LONGITUDE
START POINT	Ch. 126/00 M	22°37'36.36"N	71°27'33.80"E
END POINT	Ch. 144/700 M	22°42'49.82"N	71°36'19.72"E

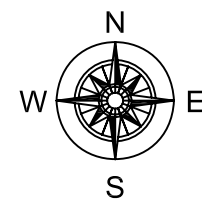
Dy. Executive Engineer  
(R & B) Sub Dn.No.1  
Surendranagar

Executive Engineer  
(R & B) Division  
Surendranagar



Name of work :- Widening And Strengthening Four Lane of  
Muli Surendranagar Road  
KM. 126/00 TO 144/700

SHEET  
2 TO 2



**OPEN SERIES MAP**  
**No. F42L10**  
Scale 1:50,000

F42L5 (41N/9)	F42L9 (41N/10)	F42L13 (41N/13)
F42L6 (41N/6)	<b>F42L10 (41N/10)</b> Surendranagar GUJARAT	F42L14 (41N/14)
F42L7 (41N/7)	F42L11 (41N/11)	F42L15 (41N/15)

1. Bhavnagar, GUJARAT  
2. Rajkot, GUJARAT

**भारतीय सर्वेक्षण विभाग** **SURVEY OF INDIA**  
1st Edition 2011. Price : Rs. 77/-

**CONVENTIONAL SYMBOLS**

Express highway with toll, with bridge, with distance stone  
Roads, metalled according to importance  
Unmetalled road, Cart track, Pack track with pass, Foot path  
Dams, masonry or rock filled, earthwork, Well  
River dry with water channel, with island & rocks, Tidal river  
Submerged rocks, Shoal, Swamp, Reeds  
Wells: lined, unlined, Tube well, Spring, Tank, Perennial, dry  
Embankments: road or rail, bank, broken ground  
Railways, broad gauge, double, single with station, under construction  
Railways, other gauges, double, single with distance stone, do  
Mineral line or tramway, K.M. Cutting with tunnel  
Contours with sub-features, Rocky slopes, Cliffs  
Sand features (1 Met. (328 ft) high) (Dunes, shifting)  
Towns or Villages: inhabited, deserted, Fort  
Hills, prominent, temporary, Tower, Antenna  
Temple, Chhatri, Church, Mosque, Light, Tomb, Graves  
Lighthouse, Lightship, Buoy, lighted, unlighted, Anchorage  
Mine, Vine on hills, Grass, Scrub  
Palms, palm grove, other: Plantain, Coconut, Bamboo, Other trees  
Areas: cultivated, wooded, Surveyed tree  
Boundary: international  
state, demarcated, undemarcated  
district, subdivision, taluk or Taluk, forest  
Boundary pillars surveyed, uncoloured  
Heights, triangulated, station point, approximate  
Bench-mark, geodetic, tertiary, canal  
Post office, Overhead tank  
Rail house or inspection bungalow, Circular house, Police station  
Camping ground, Forest, reserved, protected  
Special names: administrative, locality or tribal  
Hospital, Dispensary, Veterinary, Hospital / Dispensary  
Aerodrome, Helipad, Tourist site  
Power line: with pylons surveyed, with poles unsurveyed

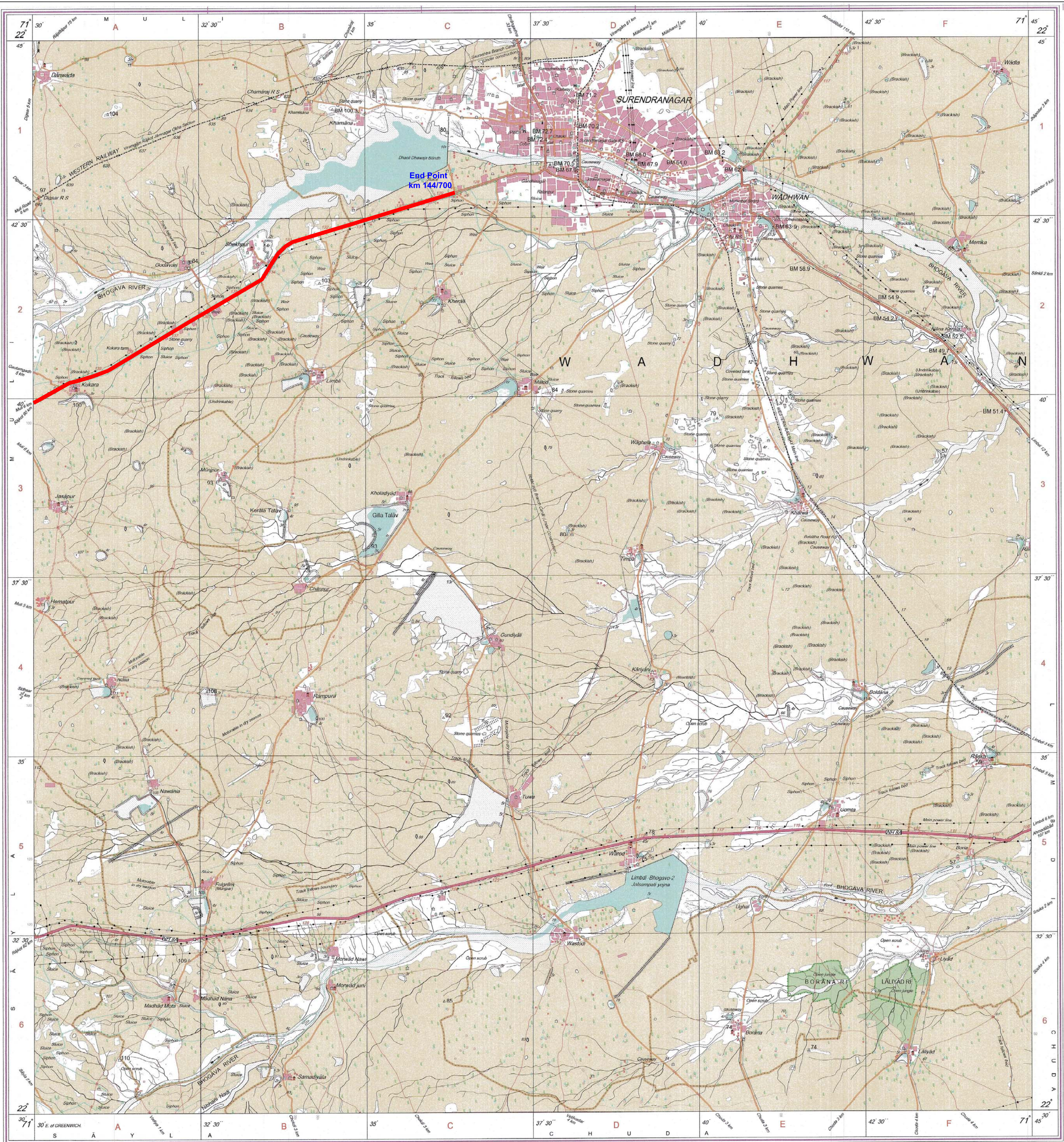
**REFERENCE**  
AN-64 National Highway No. 8A

**NOTES**  
Heights are in metres and above Indian mean sea level.  
Contours are appropriate.  
A relative height, S, represents the approximate height, in metres, between the top and bottom of a steep slope.  
Wells are numerous throughout the sheet; only the important ones have been shown.  
Canals against which there is no obstruction remain generally unshown in any season.  
There are three power lines at southern edge is not adjusted due to distance of surveyed station.

**COMPILED INDEX**

A	B
---	---

Projection - UTM Datum - WGS 84  
Magnetic Variation from True North about West in 2005.  
(Decreases by about 1' annually)  
1:50,000  
500 m to 1 cm  
2 cm to 1 km  
CONTOUR INTERVAL 20 METRES  
For further details about this map, please contact  
Gujarat, Daman & Diu Geo-Spatial Data Centre  
Survey of India, Sector 10(A)  
Gandhinagar.  
WEBSITE - www.surveyofindia.gov.in  
Reproduction in whole or part by any means is prohibited without the written permission of Survey of India, the National Mapping Agency.  
GOVERNMENT OF INDIA COPYRIGHT, 2011.



प्राप्त के अनुसार, यह नक्शा या, चित्र, या प्रकाश में प्रकाशित,  
Published under the direction of Secretary, B.E., Survey of India,  
Survey of India, Haldibarkala Estate, Post Box No. 37, Dehra Dun-248001 (Uttarakhand)  
Department of Science & Technology, Government of India.

PRINTED AT THE SOUTHERN PRINTING GROUP OF SURVEY OF INDIA

Dy. Executive Engineer  
(R & B) Sub Dn.No.1  
Surendranagar

Executive Engineer  
(R & B) Division  
Surendranagar