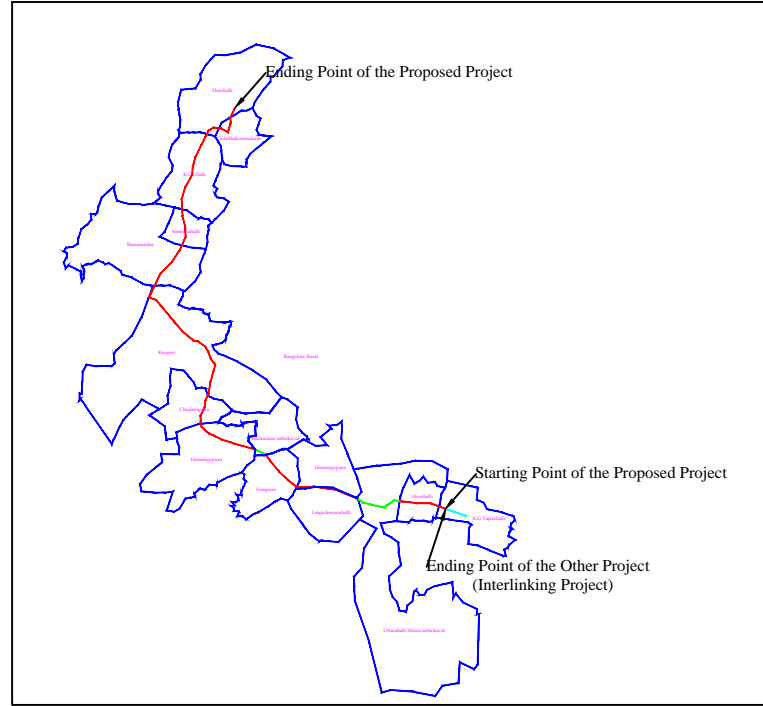


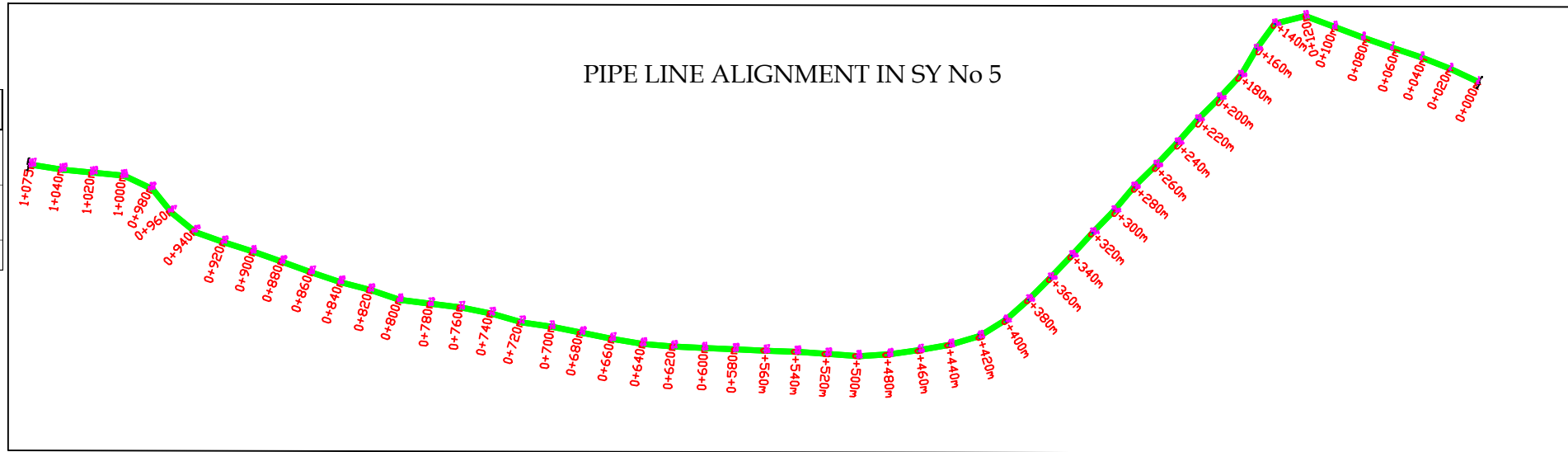
BWSSB CP10 - GPS READINGS				
SL NO	RHS		LHS	
	EASTING	NORTHING	EASTING	NORTHING
1	12.876425°	77.527897°	12.876411°	77.527883°
2	12.876473°	77.527840°	12.876451°	77.527826°
3	12.876569°	77.527684°	12.876548°	77.527670°
4	12.876656°	77.527521°	12.876634°	77.527509°
5	12.876734°	77.527354°	12.876711°	77.527343°
6	12.876814°	77.527190°	12.876792°	77.527177°
7	12.876898°	77.527027°	12.876875°	77.527015°
8	12.876980°	77.526856°	12.876955°	77.526858°
9	12.876954°	77.526665°	12.876935°	77.526686°
10	12.876822°	77.526538°	12.876804°	77.526557°
11	12.876682°	77.526426°	12.876663°	77.526443°
12	12.876567°	77.526285°	12.876547°	77.526301°
13	12.876455°	77.526139°	12.876436°	77.526156°
14	12.876336°	77.526001°	12.876316°	77.526018°
15	12.876221°	77.525859°	12.876201°	77.525875°
16	12.876111°	77.525712°	12.876092°	77.525729°
17	12.875988°	77.525577°	12.875970°	77.525594°
18	12.875875°	77.525434°	12.875856°	77.525450°
19	12.875759°	77.525293°	12.875739°	77.525310°
20	12.875645°	77.525151°	12.875625°	77.525167°
21	12.875534°	77.525006°	12.875514°	77.525021°
22	12.875434°	77.524856°	12.875411°	77.524867°
23	12.875361°	77.524691°	12.875336°	77.524695°
24	12.875333°	77.524511°	12.875307°	77.524512°
25	12.875324°	77.524327°	12.875299°	77.524328°
26	12.875323°	77.524144°	12.875297°	77.524143°
27	12.875335°	77.523962°	12.875310°	77.523957°
28	12.875370°	77.523782°	12.875345°	77.523777°
29	12.875404°	77.523600°	12.875379°	77.523596°
30	12.875433°	77.523419°	12.875408°	77.523414°
31	12.875464°	77.523237°	12.875439°	77.523233°
32	12.875494°	77.523056°	12.875469°	77.523051°
33	12.875525°	77.522875°	12.875500°	77.522869°
34	12.875563°	77.522696°	12.875539°	77.522688°
35	12.875614°	77.522520°	12.875590°	77.522511°
36	12.875672°	77.522345°	12.875648°	77.522337°
37	12.875729°	77.522169°	12.875704°	77.522163°
38	12.875778°	77.521994°	12.875755°	77.521984°
39	12.875849°	77.521824°	12.875825°	77.521816°
40	12.875906°	77.521648°	12.875881°	77.521642°
41	12.875950°	77.521469°	12.875926°	77.521463°
42	12.875995°	77.521294°	12.875973°	77.521283°
43	12.876074°	77.521127°	12.876050°	77.521118°
44	12.876141°	77.520957°	12.876118°	77.520946°
45	12.876219°	77.520791°	12.876197°	77.520780°
46	12.876301°	77.520627°	12.876279°	77.520616°
47	12.876382°	77.520462°	12.876359°	77.520451°
48	12.876458°	77.520295°	12.876435°	77.520284°
49	12.876541°	77.520138°	12.876523°	77.520119°
50	12.876671°	77.520014°	12.876658°	77.519993°
51	12.876823°	77.519907°	12.876802°	77.519893°
52	12.876917°	77.519746°	12.876892°	77.519740°
53	12.876956°	77.519566°	12.876932°	77.519560°
54	12.876997°	77.519387°	12.876972°	77.519380°
55	12.877047°	77.519211°	12.877023°	77.519203°
56	12.877062°	77.519148°	12.877039°	77.519138°



KEY MAP

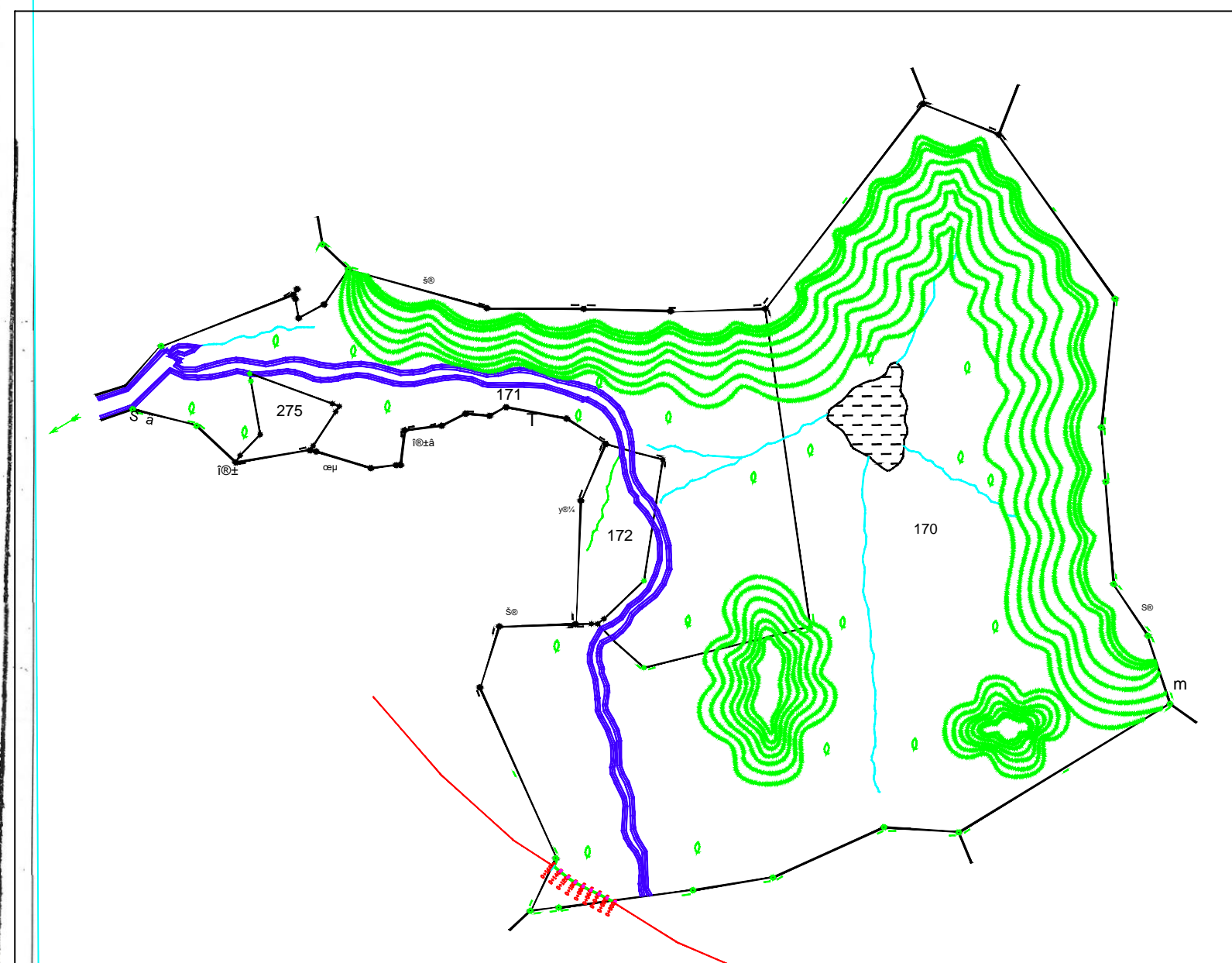
LEGEND	
PIPE LINE IN FOREST	<span style="color: green;">—</span>
PIPE LINE IN NON FOREST	<span style="color: red;">—</span>

SL NO	COMPONENT	VILLAGE	HOBLIE	PURPOSE	SYURVE NO'S	UNIT	LENGTH (L)	WIDTH (W)	AERA IN SQM	AERA IN HECTER	REMARKS
1	LAYING OF PIPE LINE	UTTARAHALLI MANVARTHIKAVAL	UTTARAHALLI -2	LAYING OF MS PIPE LINE OF DIA 2101mm	SY No: 5	M	1075.0	2.8	3010.0	0.301	
1	LAYING OF PIPE LINE	BADAMANEVARTHIKAVALL	KENGERI - 3	LAYING OF MS PIPE LINE OF DIA 2101mm	SY No: 170	M	160.0	2.5	400.0	0.040	
TOTAL FOREST AERA REQUIRED =										0.341	



PROJECT :	BWSSP(III)/JICA/CP-10 CITY TRUNK MAIN ALONG WESTERN ROUTE		
USER AGENCY	EXECUTIVE ENGINEER KAVERI-4 DIVISION BWSSB, MALLESHWARAM, BENGALURU-12		
TOPO SHEET No.:	D43X9		
	GEO-REFERENCE MAP OF UTTARAHALLI VILLAGE WITH SURVEY NO AND FOREST AREA DETAILS		
DRAWING No.	SHEET:A2	01 OF 02	REVISION:
RELEASED FOR	<input type="checkbox"/> PRELIMINARY	<input type="checkbox"/> TENDER	<input type="checkbox"/> INFORMATION <input checked="" type="checkbox"/> APPROVAL <input type="checkbox"/> CONSTRUCTION



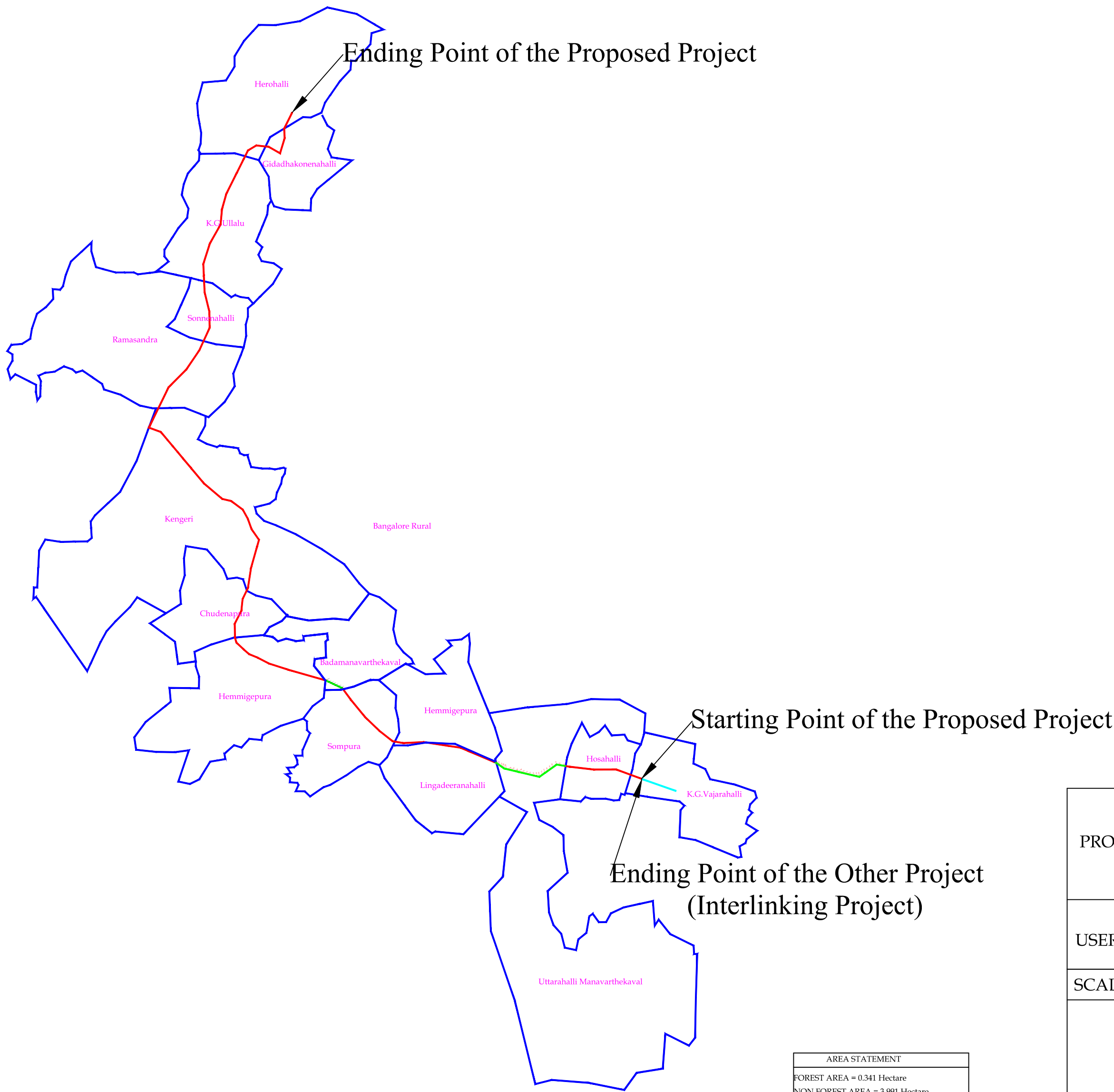
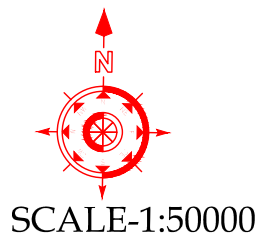


LEGEND	
PIPE LINE IN FOREST	
PIPE LINE IN NON FOREST	

  
Executive Engineer  
Kavery Division-4  
BWSSB, Malleshwaram  
Bangalore - 560 012

PRODUCED BY AN AUTODESK EDUCATIONAL PRODUCT





AREA STATEMENT	
FOREST AREA = 0.341 Hectare	
NON FOREST AREA = 3.991 Hectare	

AREA STATEMENT FOR FOREST LAND IN THE PROJECT						
Sl NO	DISTRICT	DIVISION	RANGE / TEHSIL / VILLAGE	FOREST AREA IN HECTARE	NON FOREST	REMARKS
1	BANGALORE URBAN	BANGALORE URBAN	K.G.VAJARAHALLI		0.042	
2	BANGALORE URBAN	BANGALORE URBAN	HOSAHALLI		0.256	
3	BANGALORE URBAN	BANGALORE URBAN	UTTARAHALLI MANAVARTHEKAVAL	0.301		
4	BANGALORE URBAN	BANGALORE URBAN	LINGADEERANAHALLI		0.166	
5	BANGALORE URBAN	BANGALORE URBAN	HEMMIGEPURA 1		0.147	
6	BANGALORE URBAN	BANGALORE URBAN	SOMPURA		0.298	
7	BANGALORE URBAN	BANGALORE URBAN	BADAMANAVARTHEKAVAL	0.040		
	BANGALORE URBAN	BANGALORE URBAN	HEMMIGEPURA		0.375	
9	BANGALORE URBAN	BANGALORE URBAN	CHUDENAPURA		0.219	
10	BANGALORE URBAN	BANGALORE URBAN	KENGERI-1		0.830	
11	BANGALORE URBAN	BANGALORE URBAN	RAMASANDRA		0.337	
12	BANGALORE URBAN	BANGALORE URBAN	SONNEHALLI		0.284	
13	BANGALORE URBAN	BANGALORE URBAN	K.G.ULLAL		0.614	
14	BANGALORE URBAN	BANGALORE URBAN	HORAHALLI		0.226	
15	BANGALORE URBAN	BANGALORE URBAN	GIDADHAKONENAHALLI		0.197	
				0.341	3.991	

Executive Engineer  
Kaveri Division-4  
BWSSB, Malleshwaram  
Bangalore - 560 012

LEGEND	
PIPE LINE IN FOREST	<div></div>
PIPE LINE IN NON FOREST	<div></div>
VILLAGE BOUNDERY	<div></div>

PROJECT :	BWSSP(III)/JICA/CP-10 CITY TRUNK MAIN ALONG WESTERN ROUTE				
USER AGENCY	EXECUTIVE ENGINEER KAVERI-4 DIVISION BWSSB, MALLESHWARAM, BENGALURU-12				
SCALE-1:50000		OVER ALL PROJECT ALIGNMENT IN VILLAGE BOUNDARY MAP			
DRAWING No.		SHEET: A2	01 OF 01	REVISION:	
RELEASED FOR	<input type="checkbox"/> PRELIMINARY	<input type="checkbox"/> TENDER	<input type="checkbox"/> INFORMATION	<input checked="" type="checkbox"/> APPROVAL	<input type="checkbox"/> CONSTRUCTION