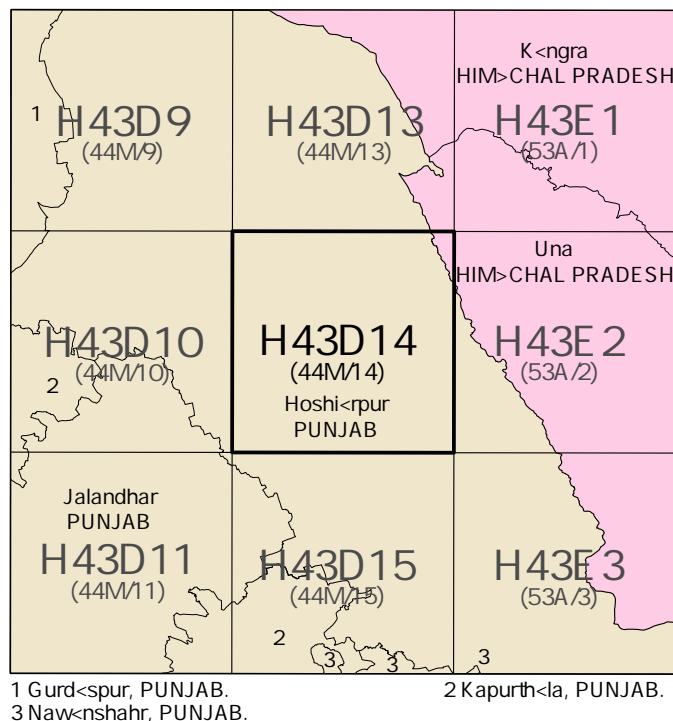




No. H43D14  
Scale 1:50,000



भारतीय सर्वेक्षण विभाग SURVEY OF INDIA

1st Edition 2010

Price: Rs. 70/-

CONVENTIONAL SYMBOLS

- Express highway with toll, with bridge, with distance stone
- Roads, metalled according to importance
- Roads, double carriageway according to importance
- Unmetalled road, Cart-track, Pack-track with pass, Foot-path
- Streams with track in bed, underflood, Canal
- Dams, masonry or rock-filled, earthwork, Weir
- River, dry with water channel, with island & rocks, Tidal river
- Submerged rocks, Shoal, Swamp, Reeds
- Wells, lined, unlined, Tube-well, Spring, Tanks, perennial, dry
- Embankments, road or rail, tank, Broken ground
- Railways, broad gauge, double, single with station, under constn
- Railways, other gauges, double, single with distance stone, do.
- Mineral line or tramway, Kin. Cutting with tunnel
- Contours with sub-features, Rocky slopes, Cliffs
- Sand features: (1) flat, (2) sand-hill(permanent), (3) dunes(shifting)
- Towns or Villages, inhabited, deserted, Fort
- Mts, permanent, temporary, Tower, Adolates
- Temples, Chhatris, Mosques, Tighs, Tums, Graves
- Lighthouses, Lightships, Buoys, lighted, unlighted, Anchorage
- Mine, Vine on hillside, Grass, Scrub
- Palms, peeples, other, Plantain, Conifer, Bamboo, Other trees
- Areas, cultivated, wooded, Surveyed tree
- state, demarcated, undemarcated
- district, subdivision, taluk or taluk, forest
- Boundary pillars, surveyed, unlocated
- Heights, triangulated, station, point, approximate
- Bench-mark, geodetic, tertiary, canal
- Post office, Telegraph office, Overhead tank
- Rest house or inspection bungalow, Circuit house, Police station
- Camping ground, Forest, reserved, protected
- Spaced names, administrative, locality or tribal
- Hospital, Dispensary, Veterinary Hospital, Dispensary
- Aerodrome, Helipad, Tourist site
- Power line, with pylons surveyed, with poles unsurveyed

REFERENCE

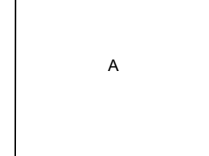
MT 70 National Highway No. 70

NOTES :-

- Heights and contours have not been shown
- A relative height, e.g., 10, represents the approximate height in metres, between the top and bottom of a steep slope
- Unmetalled roads and cart tracks in this sheet are generally metadable in dry season
- Tanks shown dry, in this area usually contain water from July to December
- Tube wells are numerous throughout the sheet, only the important ones have been shown
- The exterior boundaries of areas of Reserved or Protected Forests are shown by green islands

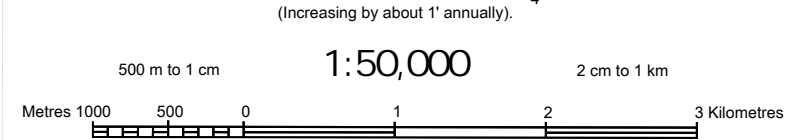
COMPILATION INDEX

A. Compiled from 1:25,000 scale survey during 1974-79. Updated for major details during 2000-01.



Projection - UTM Datum - WGS 84

Magnetic Variation from True North about 1 1/2° East in 2005 (increasing by about 1° annually)



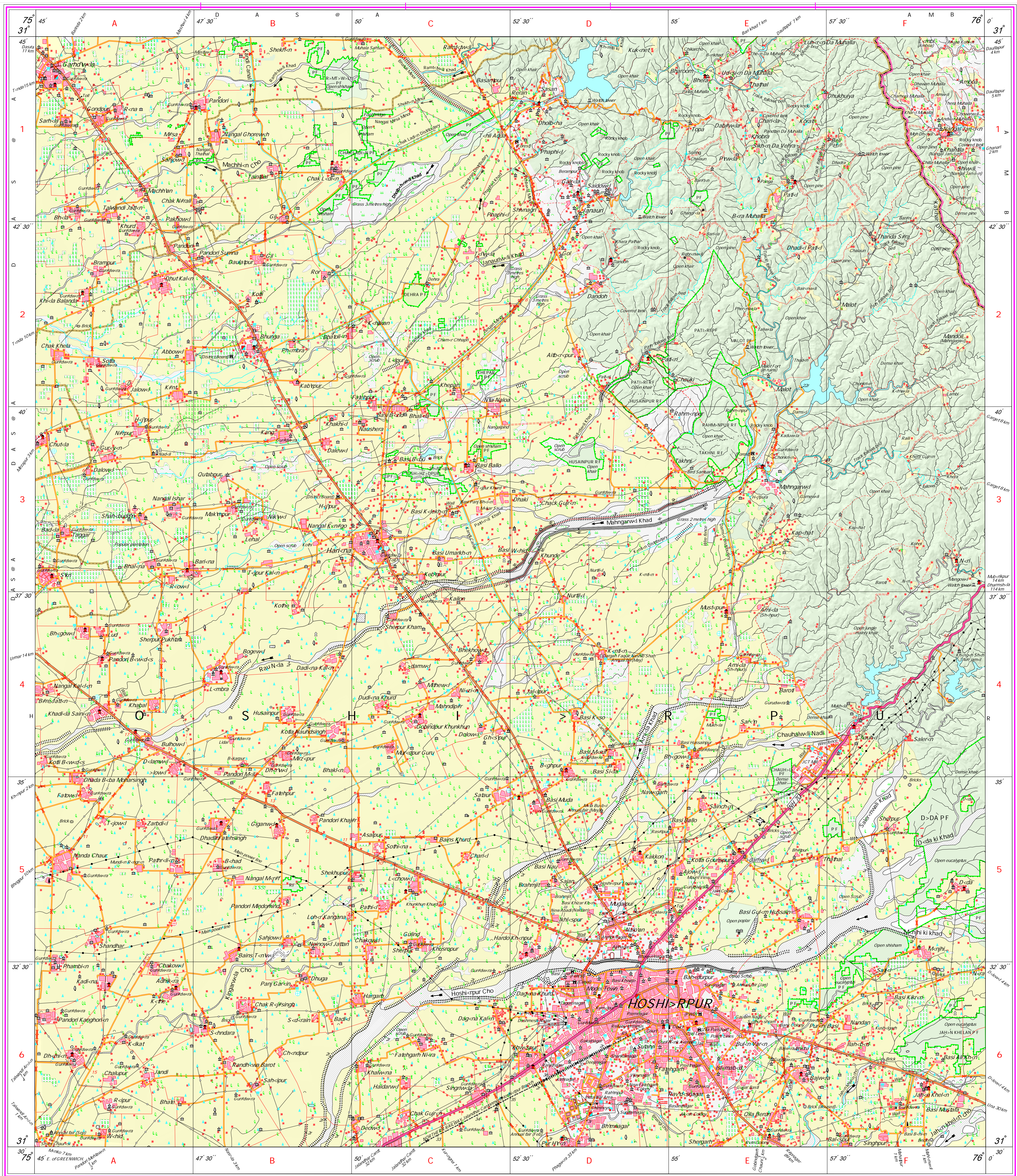
For further details about this map, please contact

Director  
Himachal Pradesh Geo-Spatial Data Centre  
Survey of India, Sector 32 A  
Chandigarh.

WEBSITE - [www.surveyofindia.gov.in](http://www.surveyofindia.gov.in)

Reproduction in whole or part by any means is prohibited without the written permission of Survey of India, the National Mapping Agency.

GOVERNMENT OF INDIA COPYRIGHT, 2010.



REG. No.

WPG D10 (WP GDC-130/2000)

भारत के नक्काशा, सर्वेक्षण विभाग, भारत, के नियंत्रण में प्रकाशित,  
Published under the direction of Shri S. Subba Rao, B.E., Surveyor General of India.  
Survey of India, H-11, Park Road, Post Box No. 37, Dehra Dun-248001 (Uttar-Khand)  
Department of Science & Technology, Government of India.

PRINTED AT THE WESTERN PRINTING GROUP OF SURVEY OF INDIA