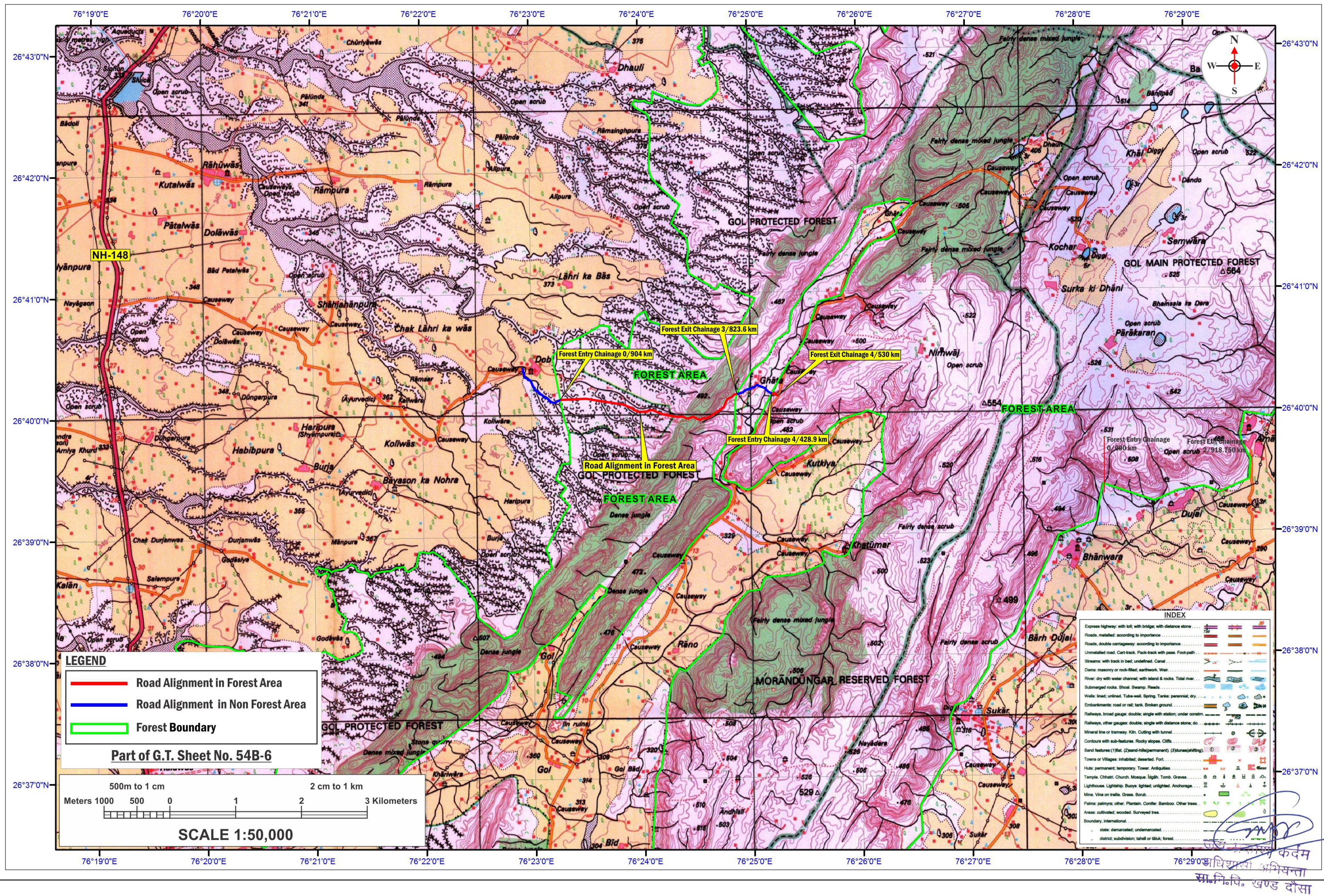


# MAP SHOWING GEO-REFERENCED SURVEY OF INDIA TOPOSHEET WITH ROAD ALIGNMENT IN FOREST AND NON FOREST AREA

Project Name : Construction of Missing Link Road from NH 148 to Moroli via Peepli Patalwas Koliwada Dob Paplaj Mata Sar Dhaun (MDR-145) km 9.00 to 15.00, in the State of Rajasthan

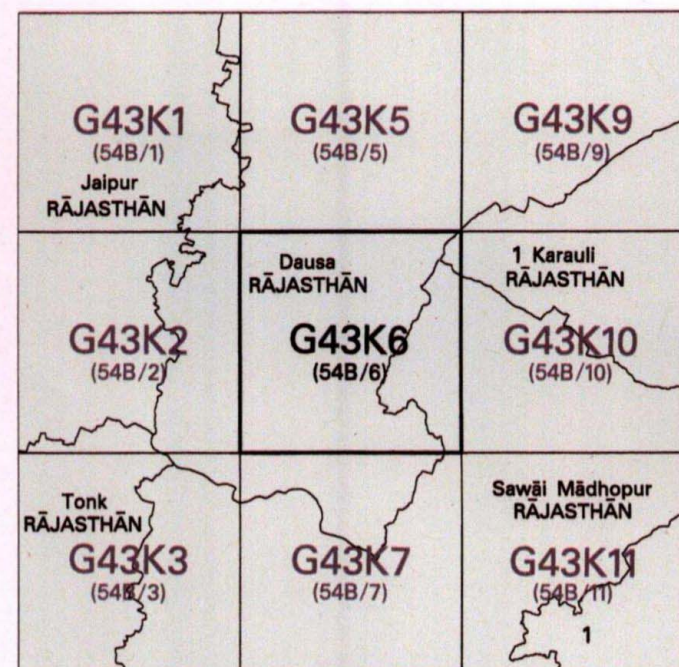
Proposal No. : FP/RJ/ROAD/144538/2021 (Applied Area : 3.0207 Hectare)







No. G43K6  
Scale 1:50,000



भारतीय सर्वेक्षण विभाग SURVEY OF INDIA

1st Edition 2013. Price: ₹ 94/-

#### CONVENTIONAL SYMBOLS

- Express Highway: with toll; with bridge; with distance stone
- Roads, metalled: according to importance
- Roads, double cartways: according to importance
- Unmetalled road, Cart-track, Pack-track with pass, Foot-path
- Streams: with track in bed; undefined, Canal
- Dams: masonry or rock-filled; earthenwork, Weir
- River: dry with water channel; with island & rocks, Tidal river
- Submerged rocks, Shoal, Swamp, Reeds
- Wells: lined; unlined, Tube-well, Spring, Tanks: perennial; dry
- Embankment: road or rail; tank, Broken ground
- Railways, broad gauge: double; single with station; under constr.
- Railways, other gauges: double; single with distance stone; do.
- Mineral line or tramway, Kiln, Cutting with tunnel
- Contours with sub-features, Rocky slopes, Cliffs
- Sand features: (Ylfat, (Zland-hills (permanent), (Shlunes (shifting)
- Towns or Villages: inhabited; deserted, Fort
- Huts: permanent; temporary, Tower, Antiquities
- Temples, Chhatra, Church, Mosque, Igloo, Tomb, Graves
- Lighthouse, Lightship, Buoys: lighted; unlighted, Anchorage
- Mine, Vine on trails, Grass, Scrub
- Palms: palmry; other, Plantain, Conifer, Bamboo, Other trees
- Areas: cultivated; wooded, Surveyed tree
- Boundary, International
- state: demarcated; undemarcated
- district: subdivision, tahsil or taluk; forest
- Boundary pillars: surveyed; unlocated
- Height, triangulated: station; point; approximate
- Bench-mark: geodetic; tertiary; canal
- Post office, Telegraph Office, Overhead tank
- Rest house or inspection bungalow, Circuit house, Police station
- Camping ground, Forest: reserved; protected
- Spaced names: administrative; locality or tribal
- Hospital, Dispensary, Veterinary: Hospital / Dispensary
- Aerodrome, Halapad, Tourist site
- Power line: with pylons surveyed; with poles unsurveyed

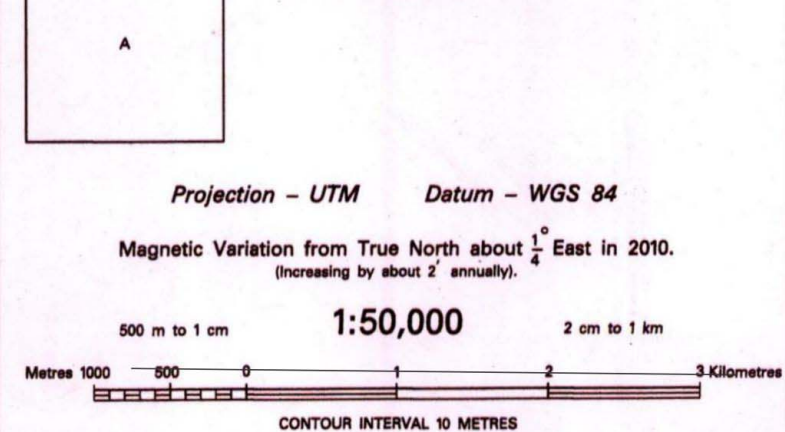
REFERENCES  
NH 148 National Highway No. 148  
NH 23 National Highway No. 23  
RICO Rajasthan state Industrial development & Investment Corporation Ltd.

#### NOTES:-

- Heights are in metres and above Indian mean sea level.
- Contours are approximate.
- A relative height, e.g., 50, represents the approximate height, in metres, between the top and bottom of a steep slope.
- A relative height, e.g., 50, against a well, indicates its total depth in metres.
- The common boundaries of the Reserved, Protected Forests between Gol Main P.F. & Morandungar R.F. and Morandungar R.F. & Gol P.F. have not been shown for want of reliable information.
- Wells are numerous throughout the sheet; only the important ones have been shown.
- Unmetalled roads and cart-roads in this sheet are generally metable (four-wheel drive).
- Tanks, shown dry, in this area usually contain water from July to December.
- Digpi is a tank which is used for collection of water.
- Hand Pump is shown thus.

#### COMPILATION INDEX

A Compiled from 1:25,000 survey, 1996-97.  
Updated for major details during 2010-11.



Projection - UTM Datum - WGS 84

Magnetic Variation from True North about 1° East in 2010.  
(Increasing by about 2' annually).

1:50,000

CONTOUR INTERVAL 10 METRES

For further details about this map, please contact

Director

Rajasthan Geo-Spatial Data Centre

Survey of India

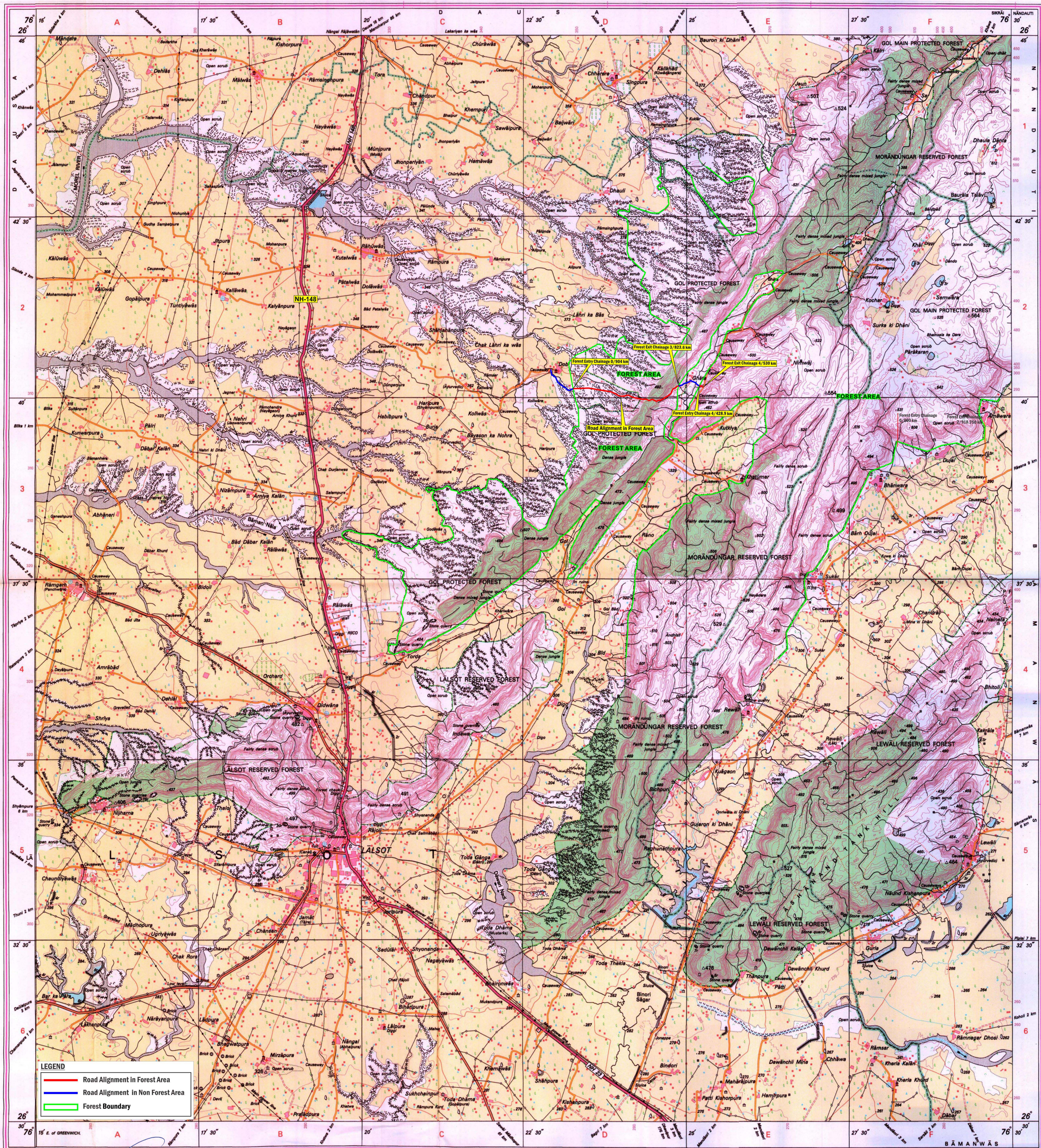
Sector 10, Vidyacharnagar

Jaipur.

WEBSITE - www.surveyofindia.gov.in

Reproduction in whole or part by any means is prohibited without the written permission of Survey of India, the National Mapping Agency.

GOVERNMENT OF INDIA COPYRIGHT, 2013.



REG. No. - WPG D 13 (Rajasthan GDC-1:50,000)

#### LEGEND

- Road Alignment in Forest Area
- Road Alignment in Non Forest Area
- Forest Boundary

भारत के सर्वेक्षण विभाग  
Published under the direction of Dr. Swarna Subba Rao, Surveyor General of India,  
Survey of India, Hathiherkela Estate, Post Box No. 37, Dehra Dun - 248001 (Uttarakhand),  
Department of Science & Technology, Government of India.

PRINTED AT THE WESTERN PRINTING GROUP OF SURVEY OF INDIA.