

NOT FOR EXPORT

OPEN SERIES
MAP

No. H43K10

Scale 1:50,000



1 Nawānshahr, PUNJAB. 3 Kurūkshetra, HARYANA.
2 Ludhiāna, PUNJAB.

भारतीय सर्वेक्षण विभाग

SURVEY OF INDIA

1st Edition, 2008

Price : Rs. 50/-

CONVENTIONAL SYMBOLS

[illegible]

REFERENCE

NOTES -

Heights are in metres and above Indian mean sea level.

Contours are approximately:

- All canals and unattended roads along canals are motorable throughout the year. Permission to use these is required from the Irrigation authorities. Other canals are generally motorable.
- A relative height $\pm .05$ represents the approximate height in metres, between the top and bottom of the step.
- A relative height $\pm .01$ is marked along roads, indicates the height of the top of the step (or drop) above the adjacent country.

Tanks, shown dry, in this area usually contain water from July to December.

The wells are numerous throughout the area, only the important ones have been shown.

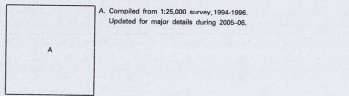
The boundary between Union Territory of Chandigarh and Punjab States has been surveyed as pointed out by the local officials on the ground but has not been verified by the Governments concerned.

The boundary between Punjab States and Haryana and Punjab States are Chandigarh.

3,000-acre reclamation projects of Bahadur Nagar and Bahadur Nagar are shown.

with numbers shown as terraced bank-marks thus $w/0^0 30' 30'' N, 76^0 15' E$

COMPILATION INDEX



Projection - UTM Datum - WGS 84

Magnetic Variation from True North about 1° East in 2005

1:50,000

500 0 1 2 3

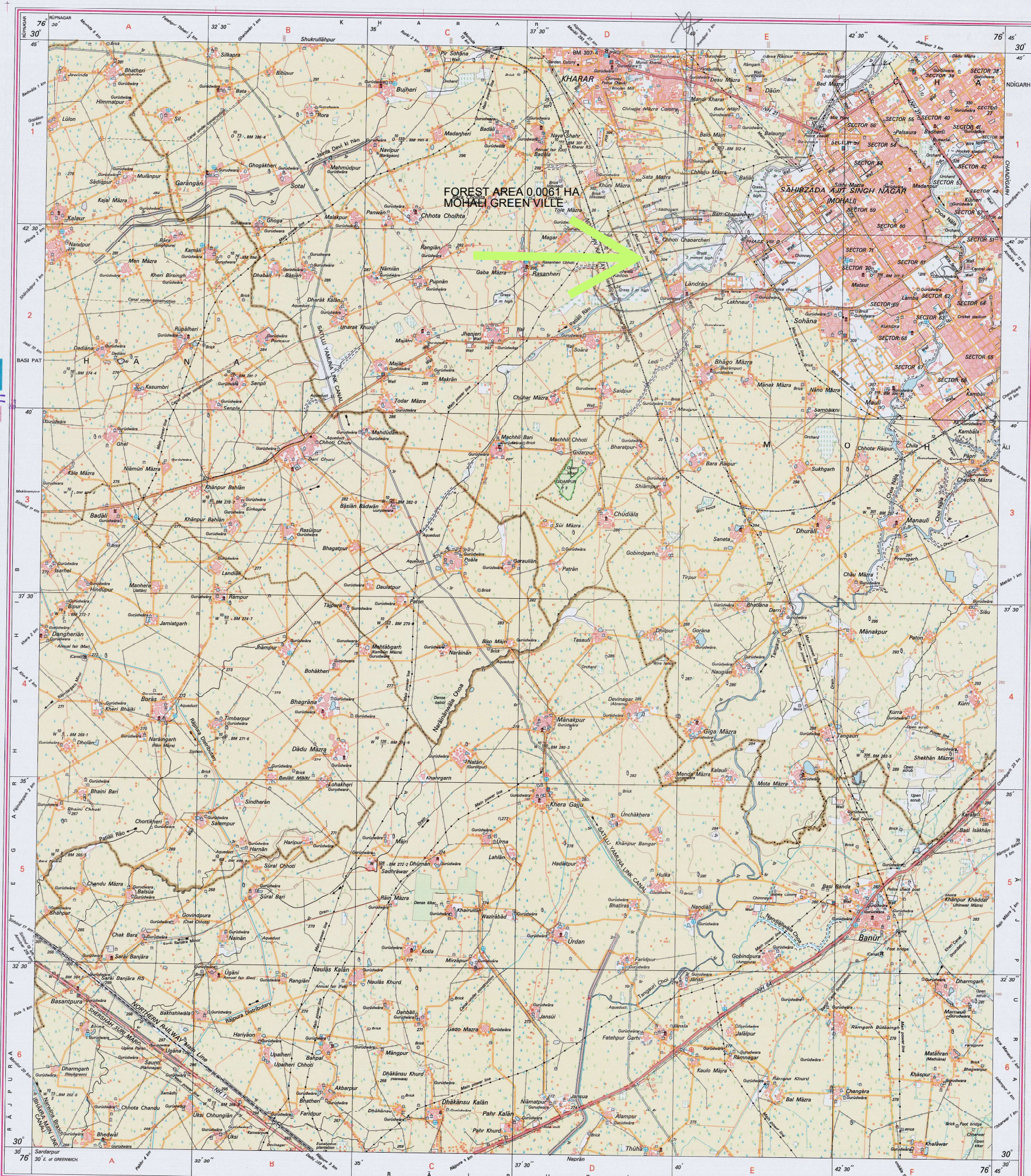
Director
Punjab & Chandigarh Geo-Spatial Data Centre

Chandigarh.

WEBSITE – www.surveynfindle.com

Reproduction in whole or part by any means is prohibited without the written permission of Survey of India, the National Mapping Agency.

GOVERNMENT OF INDIA COPYRIGHT 2008



REG. No. - WFO DAB/SEC/DC/143/2022

भारत के महारथीक विवेचन रानेन सिर वंश, वीरराज रूनिभिरि (विभिन) (विषे कोयभा), एएएनएड वंश (विषे) जीआईएए (जुगुदी-अंरुविन), वीरजीव जीआईएए/एलआईएए (कोयभा)।आईटी. वीरलेयन।
पनीन।(ओ कोय)।आईआईटी. वीरराज रूनिभिरि (विभिन) (विषे कोयभा), एएएनएड वंश (विषे) जीआईएए (जुगुदी-अंरुविन), वीरजीव जीआईएए/एलआईएए (कोयभा)।आईटी. वीरलेयन।
Published under the direction of Brigadier Rajendra Singh Tamsar, B.Sc. Engn (Civil) (Distinction), M.Aspid Soc. Researcher-G.I.S. (Q.I. Australia); P.G.Dip. G.I.S./A.I.S. (Cadastral)।I.T. N.M.A.E.।
P.G.Dip.(Auto Comp)।I.T. N.M.A.E.। Engn(Survey)।I.T. Hyderabad।A.I.S.; P.I.S.; F.C.A.; M.I.S.G. (M.N.A.E.।Cng India)। Surveyor General of India.
Survey of India, Hathiabakhi Area, Post Box No. 37, Dehra Dun - 248001, Hathiabakhi, Dehra Dun, U.P., India

PRINTED AT THE MODERN PRINTING GROUP OF LONDON, E.C. 4.