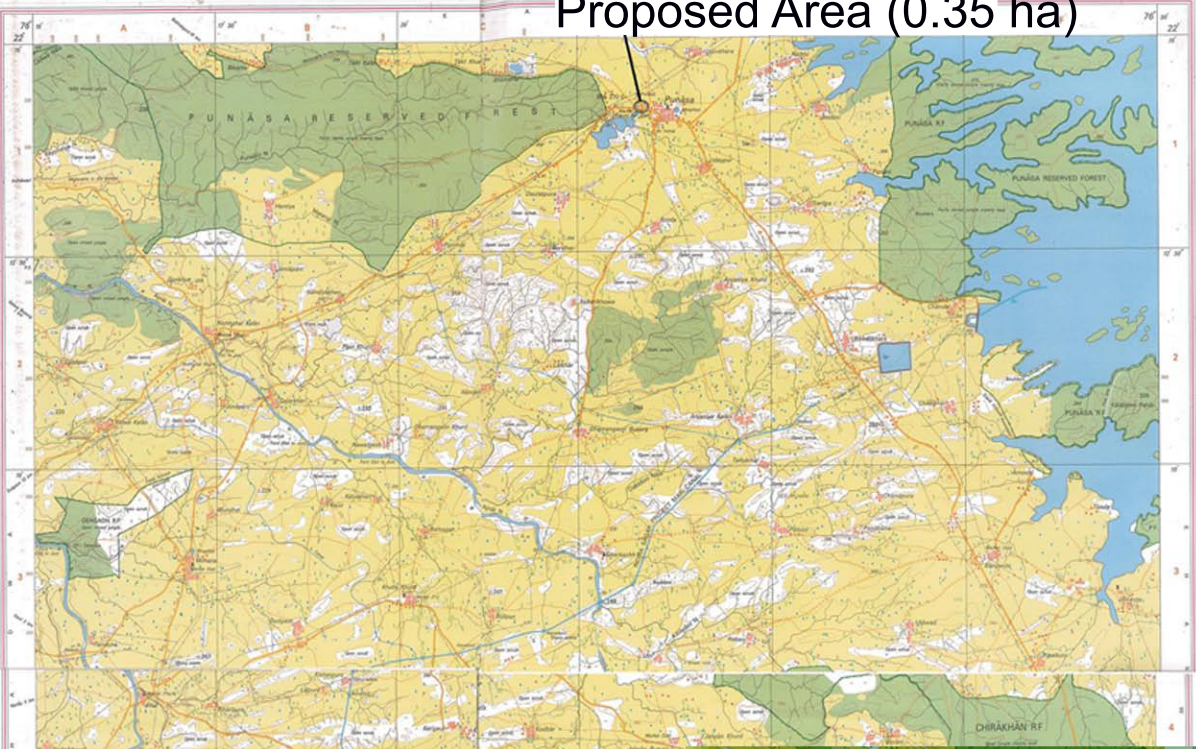
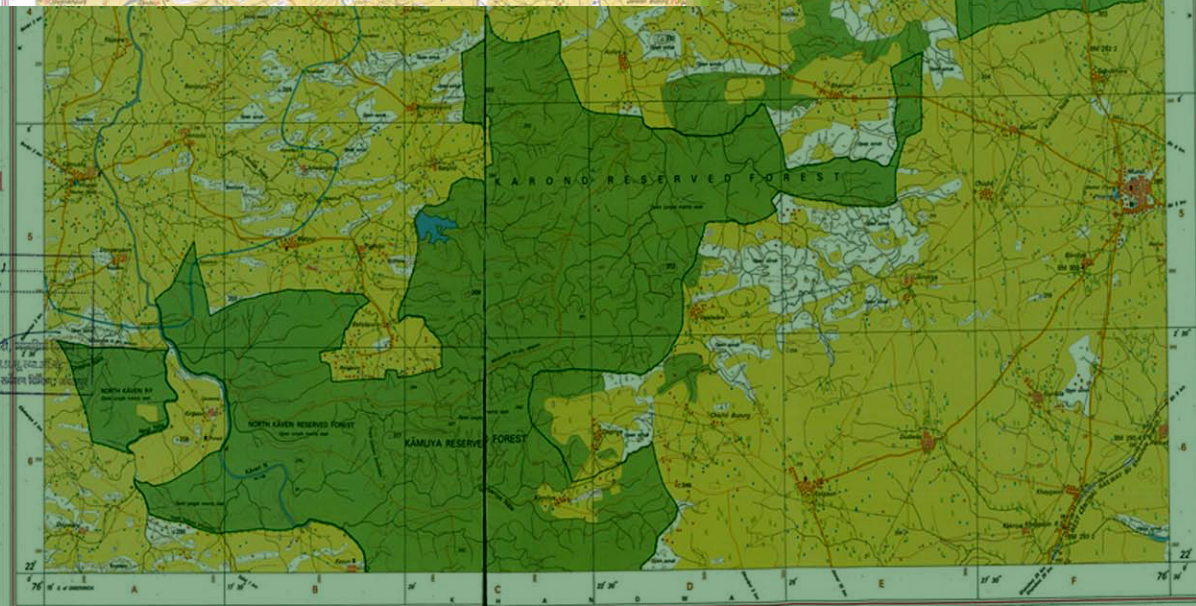




Scale 1:50,000.



the highway will be a bridge with double steel			
black, mauling is negative			
the highway, black, mauling is negative			
the highway, black, mauling is negative			
the highway, black, mauling is negative			
the highway, black, mauling is negative			
the highway, black, mauling is negative			
the highway, black, mauling is negative			
the highway, black, mauling is negative			
the highway, black, mauling is negative			
the highway, black, mauling is negative			
the highway, black, mauling is negative			
the highway, black, mauling is negative			
the highway, black, mauling is negative			
the highway, black, mauling is negative			
the highway, black, mauling is negative			
the highway, black, mauling is negative			
the highway, black, mauling is negative			
the highway, black, mauling is negative			
the highway, black, mauling is negative			
the highway, black, mauling is negative			
the highway, black, mauling is negative			
the highway, black, mauling is negative			
the highway, black, mauling is negative			
the highway, black, mauling is negative			
the highway, black, mauling is negative			
the highway, black, mauling is negative			
the highway, black, mauling is negative			
the highway, black, mauling is negative			
the highway, black, mauling is negative			



Height, weight, blood pressure, temperature	300 03 0	300 03 0
Backbone, joints, reflexes, etc.		
Heart, lungs, palpated, chest, back		
Not touch a sensitive organ, test, heart, pulse, apical		
General physical, force, manual, physical		
Special sensory, abnormality, usually in child		
Respiratory, Stenosis, Stridor, Hoarse, Dyspnea		
Neurologic, Mental, Tremor, etc.		
Place for self-examination, self-examination		

NOTES

Heights are in inches and above 10000 feet are feet.
Distances are approximate.

The triangulated heights and contours in this sheet are the best estimate of the heights of some isolated basins-heights and may not be strictly in accordance with maps.

A station height, e.g., 20, represents the approximate height of the station above a mean sea level.

A station height, e.g., 20, marked along a road indicates the height of the road above the adjacent country.

6903
9011

COMPLIANCE INDEX

97

97

Projection - UTM Datum - WGS 84

Magnetic Variation from True North about 1° West in 2005.
(Decreasing to about 1° annual)

0 100 200 300 400 500 600 700 800 900 1000

CONCENTRATION, g METERS

For better look along the map, please scroll

Detector

Survey of India
Survey Colony, Vijaynagar
Jabalpur.

982217 - www.surveyofindia.gov.in

without the written permission of Survey of India, the
 20 21 22 23 24 25 26 27 28 29 30

Printed by the Eastern Printing Co., Darjeeling, India.