



NOT FOR EXPORT

OPEN SERIES MAP

No. H43P16

Scale 1:50,000

Fatehabad HARYANA		
H43P11	H43P15	H43O3
Jind HARYANA		
Hisar HARYANA		
H43P12	H43P16	H43O4
Bhiwani HARYANA		
1 Rohtak, HARYANA.		
2 Churu, RAJASTHAN.		

भारतीय सर्वेक्षण विभाग

SURVEY OF INDIA

1st Edition 2007.

Price Rs. 50/-

CONVENTIONAL SYMBOLS

Express highway with toll; with bridge with distance stone	
Roads, metalled according to importance	
Roads, double cartage-way according to importance	
Unmetalled road, cart-track, pack-track with pass, foot-path	
Streams with track in bed; undefined, Canal	
Dams: masonry or rock-filled; earthwork. Weir	
River: dry with water channel; with island & rocks; tidal; river	
Submerged rocks. Shoal. Swamp. Reeds	
Wells: lined; unlined. Tube-well. Spring. Tanks: perennial; dry	
Embankments: road or rail; tank. Broken ground	
Railways, broad gauge: double; single with station; under constr.	
Railways, other gauges: double; single with distance stone; do	
Mineral line or tramway. Kite. Cutting with tunnel	
Contours with sub-features. Rocky slopes. Cliffs	
Sand features: (flat, dune, hills) (permanent), (disjunct/delimited)	
Towns or Villages: inhabited; deserted. Fort	
Huts: permanent; temporary. Tower. Antiquities	
Temple, Chhatra, Church, Mosque, Idgah, Tomb, Graves	
Lighthouse. Lightship. Buoys: lighted, unlighted. Anchorage	
Mine. Vine on trellis. Grass. Scrub	
Palms: palmrya; other: Plantain, Cashew, Bamboo. Other trees	
Areas: cultivated; wooded; surveyed tree	
Boundary, international	
state: demarcated; undemarcated	
district: subdivision, taluk or taluk; forest	
Pillar: surveyed; unlocated; village trijunction	
Heights, triangulated; station; point: approximate	
Bench-mark: geodetic; tertiary; canal	
Post office. Telegraph office. Overhead tank	
Rest house or inspection bungalow. Circuit house. Police station	
Camping ground. Forest: reserved; protected	
Spaced names: administrative; locality or tribal	
Hospital. Dispensary. Veterinary hospital	
Aerodrome. Helipad. Tourist site	
Power line: with pylons surveyed; with poles unsurveyed	

REFERENCE

NH 10 National Highway No. 10

NOTES

Heights are in metres and above Indian mean sea level.
Contours are approximate.
Important buildings are shown in black with name.
Tanks, shown dry, in this area usually contain water from July to March.
Canal distance stones are 1000 feet apart and every fifth existing stone is shown.
Tide-gauges are numerous throughout the sheet and only important ones have been shown.
All cart-tracks, and unmetalled roads along canals are motorable throughout the year. Permission to use these is required from the irrigation authorities. Other cart-tracks and unmetalled roads are generally motorable in dry season.
A relative height, e.g., 3', marked along a canal, indicates the height of the top of the canal embankment above the adjacent country.
3,000-acre reclamation stones of Bhakra Dam Project Surveys based their numbers are shown as tertiary bench-marks thus: $\triangle 155$, BM 212-4.

COMPILED INDEX

A. Surveyed during 1987-88. Updated for major details during 2004-05.

Projection - UTM Datum - WGS 84

Magnetic Variation from True North about $\frac{3}{4}$ East in 2000.

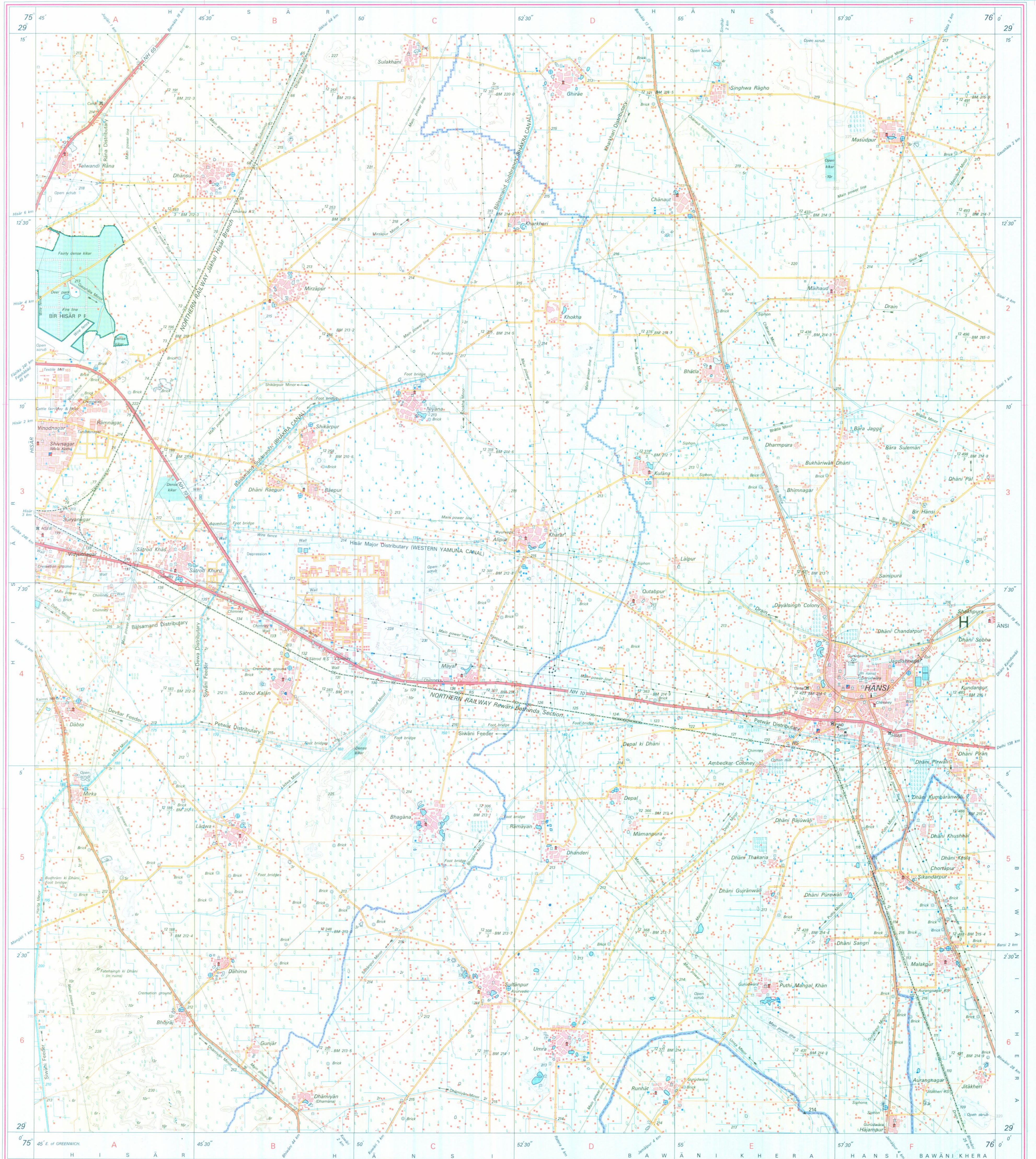
1:50,000



For further details about this map, please contact
Director
Haryana Geo-Spatial Data Centre
Survey of India, Sector 32 A
Chandigarh.
Fax : 0172 - 2604671

WEBSITE - www.surveyofindia.gov.in

Reproduction in whole or part by any means is prohibited without the written permission of Survey of India, the National Mapping Agency.



REG. No. 33(10)-W/P D 07 (Haryana) GDC-1:50,000-1:50,000

भारत के गणराज्य में प्रथम जनसंख्या गणना, 2001 के आँकड़ों पर आधारित है।
Published under the direction of Major General M. Gopal Rao, B.Tech., P.O.Dip. (Aerial Photo), MME, MCA, FIS, Surveyor General of India,
Survey of India, Hithibarkala Estate, Post Box No. 37, Dehra Dun - 248001 (Uttarakhand)
Department of Science & Technology, Government of India.

PRINTED AT THE WESTERN PRINTING GROUP OF SURVEY OF INDIA.