

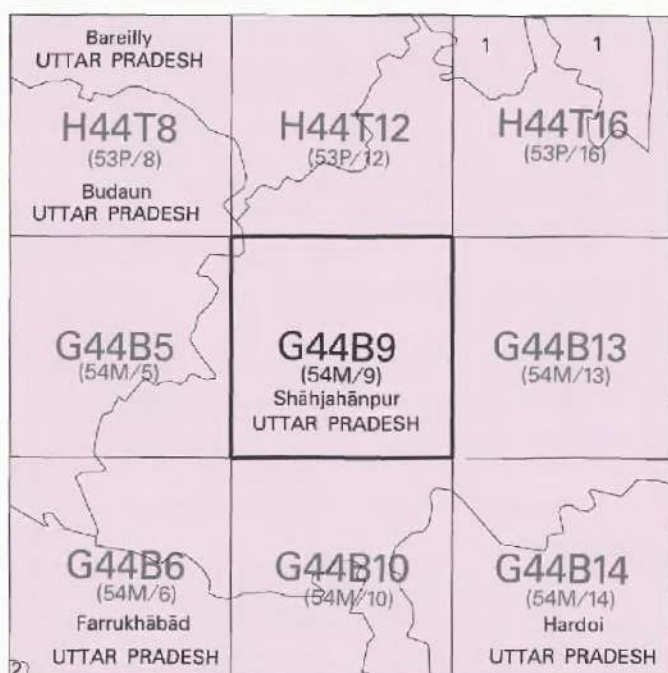


निर्यात के लिए नहीं NOT FOR EXPORT

OPEN SERIES
MAP

No. G44B9

Scale 1:50,000



भारतीय सर्वेक्षण विभाग

SURVEY OF INDIA

1st Edition 2011.

Price: ₹ 70/-

CONVENTIONAL SYMBOLS



NOTES :-

Heights are in metres and above Indian mean sea level.
Contours are approximate.
A relative height, h, represents the approximate height, in metres, between the top and bottom of a steep slope.
Cart tracks, in this sheet are generally motorable in dry season. Permission to use those along canals is required from the irrigation authorities.
Wells and tube-wells are numerous throughout the sheet; only the important ones have been shown. Tanks, shown dry, in this sheet, usually contain water from July to December.
Owing to periodical floods the courses of the Ramganga and Balgand rivers are continually changing.

COMPILATION INDEX

A. Compiled from 1:25,000 scale survey 1983-84. Updated for major details during 2006-07.

Projection - UTM Datum - WGS 84
Magnetic Variation from True North about 1/2° East in 2005.
(Increasing by about 1/2° annually)

Scale 1:50,000
500 m to 1 cm
2 cm to 1 km
CONTOUR INTERVAL 20 METRES

For further details about this map, please contact
Additional Surveyor General
Uttarakhand and West Uttar Pradesh Geo-Spatial Data Centre
Survey of India, 17 E.C. Road
Dehra Dun.
Fax : 0135 - 2656402

WEBSITE - www.surveyofindia.gov.in

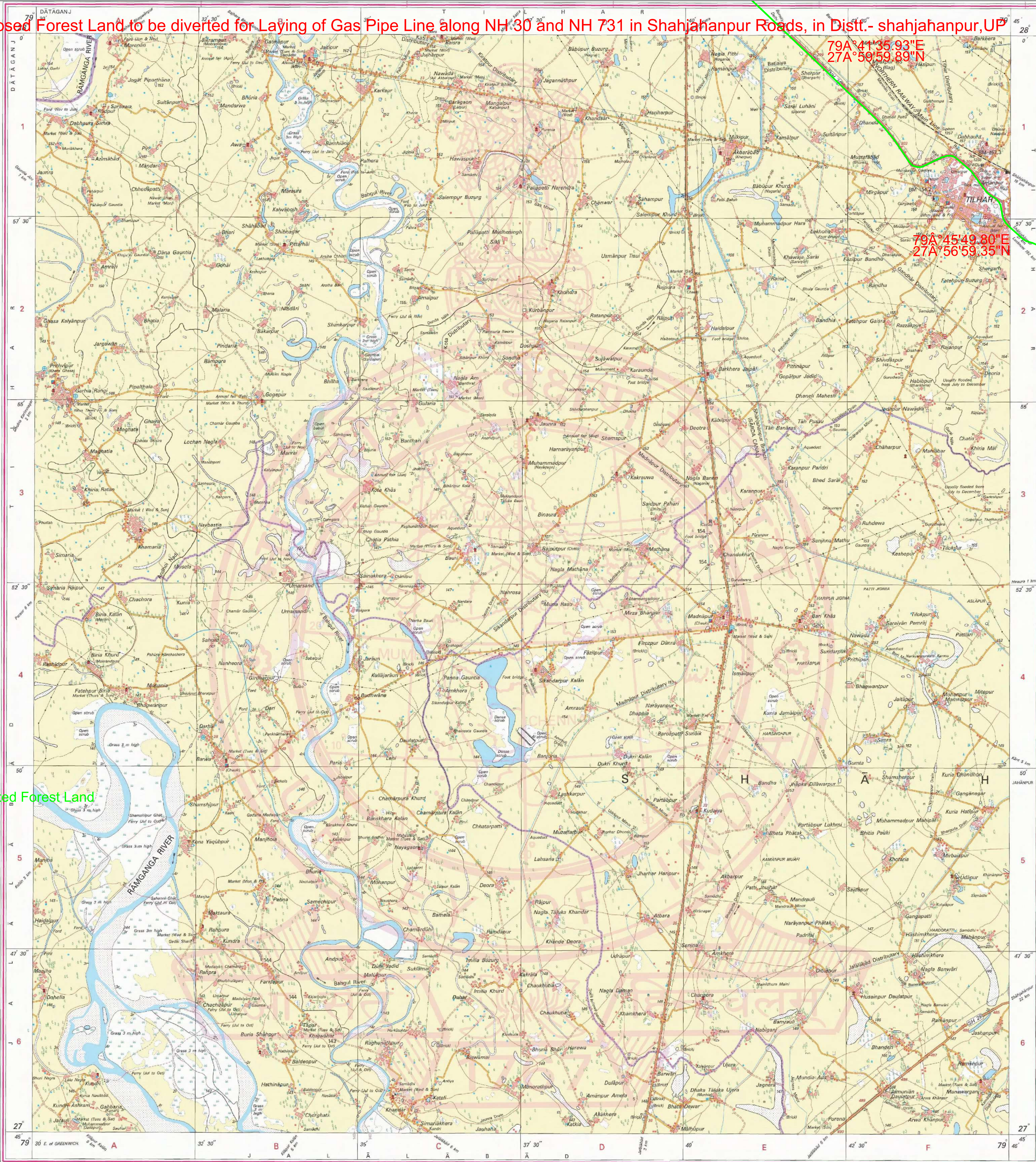
Reproduction in whole or part by any means is prohibited
without the written permission of Survey of India, the
National Mapping Agency.

GOVERNMENT OF INDIA COPYRIGHT, 2011.

Topo Map for Proposed Forest Land to be diverted for Laying of Gas Pipe Line along NH 30 and NH 731 in Shahjahanpur Roads, in Distt.- shahjahanpur, UP

79°41'35.93"E
27°59'59.89"N

79°45'49.80"E
27°56'59.35"N



REG. No. SC(0)-WPG D/10, (Uttarakhand & West UP) SC-150,000-1015.

PRINTED AT THE VESTERN PRINTING GROUP OF SURVEY OF INDIA.

यह नक्शा भारत सरकार के सर्वेक्षण विभाग द्वारा तैयार किया गया है।
Published under the direction of Shri S. K. Rao, B.E., Surveyor General of India,
Survey of India, Hattibarkala Estate, Post Box No. 37, Dehra Dun - 248001 (Uttarakhand),
Department of Science & Technology, Government of India.

जी.एच.वी. राव
G.H.V. RAO
उप महाप्रबन्धक-परिचालन एवं बिक्री
Deputy General Manager-Operation And Sales

PROPOSED GAS PIPELINE	APPLICANT AGENCY	Hindustan Petroleum Corporation Limited
PROJECT	CITY GAS DISTRIBUTION PROJECT IN SHAHJAHANPUR DISRICT	
TITLE	PIPELINE ROUTE MAP - SHAHJAHANPUR DISTRICT	
SCALE	1 : 50,000	



No. G44B14

Scale 1:50,000

G44B9 (54M/9)	G44B13 (54M/13)	G44C1 (63A/1)
G44B10 (54M/10)	G44B14 (54M/14)	G44C2 (63A/2)
G44B11 (54M/11)	G44B15 (54M/15)	G44C3 (63A/3)

1 Budan, UTTAR PRADESH

भारतीय सर्वेक्षण विभाग

SURVEY OF INDIA

1st Edition 2009

Price: Rs. 50/-

CONVENTIONAL SYMBOLS

- Express highway, with toll, with bridge, with distance stone
Roads, metalled: according to importance
Roads, double cartway: according to importance
Unmetalled road, Cart-track, Pack-track with pass, Foot-path
Streams, with track in bed, undefined, Canal
Dams: masonry or rock-filled, earthen, Weir
River, dry with water channel, with island & rocks, Tidal river
Submerged rocks, Shoal, Swamp, Reeds
Wells: lined, unlined, Tube-well, Spring, Tanks: perennial, dry
Embankments: road or rail, tank, Broken ground
Railways, broad gauge: double, single with station, under construction
Railways, other gauges: double, single with distance stone, do
Mineral line or tramway, Kila, Cutting with tunnel
Contours with sub-features: Rocky slopes, Cliffs
Sand features: (1) flat, (2) sand-hills (permanent), (3) dunes (shifting)
Towns or Villages: inhabited, deserted, Fort
Hubs: permanent, temporary, Tower, Antiquities
Temples, Chhatra, Church, Mosque, Jagah, Tomb, Graves
Lighthouse, Lightship, Buoy: lighted, unlighted, Anchorage
Mine, Vine on hillside, Grass, Scrub
Palms, palm-trees, other, Pandan, Conifer, Bamboo, Other trees
Areas: cultivated, wooded, Surveyed tree
Boundary, international
state demarcated, undemarcated
district, subdivision, taluk or thik, forest
Boundary pillars: surveyed, unlocated
Heights, triangulated, station, point, approximate
Bench mark: geodetic, tertiary, canal
Post office, Telegraph office, Overhead tank
Rest house or inspection bungalow, Circuit house, Police station
Camping ground, Forest, reserved, protected
Spaced names: administrative, locality or tribal
Hospital, Dispensary, Veterinary, Hospital / Dispensary
Aerodrome, Helipad, Tourist site
Power line: with pylons surveyed, with poles unsurveyed

Proposed Gas P/L

NOTES :-

Heights are in metres and above Indian mean sea level.
Contours are approximate.
A relative height, Δ , represents the approximate height, in metres, between the top and bottom of a steep slope.
Parental streams in this sheet are generally findable from October to June and ferry services are available on them from July to September at the places indicated as such.
Tanks, shown dry, in this area usually contain water from July to December.
Wells and tube-wells are numerous throughout the sheet, only the important ones have been shown.
Unmetalled roads in this sheet are generally motorable in dry season. Permission to use those along canals is required from the irrigation authorities.
The district boundary in the Deoria or Garia River follows the main deep water channel and will change with the fluctuations of that channel.

COMPILATION INDEX

A. Surveyed during 1973-74 Updated for major details during 2005-06



Projection - UTM Datum - WGS 84

Magnetic Variation from True North about $\frac{1}{4}^{\circ}$ East in 1995.
(Increasing by about $1'$ annually).

500 m to 1 cm
1:50,000
2 cm to 1 km
3 Kilometres

CONTOUR INTERVAL 20 METRES

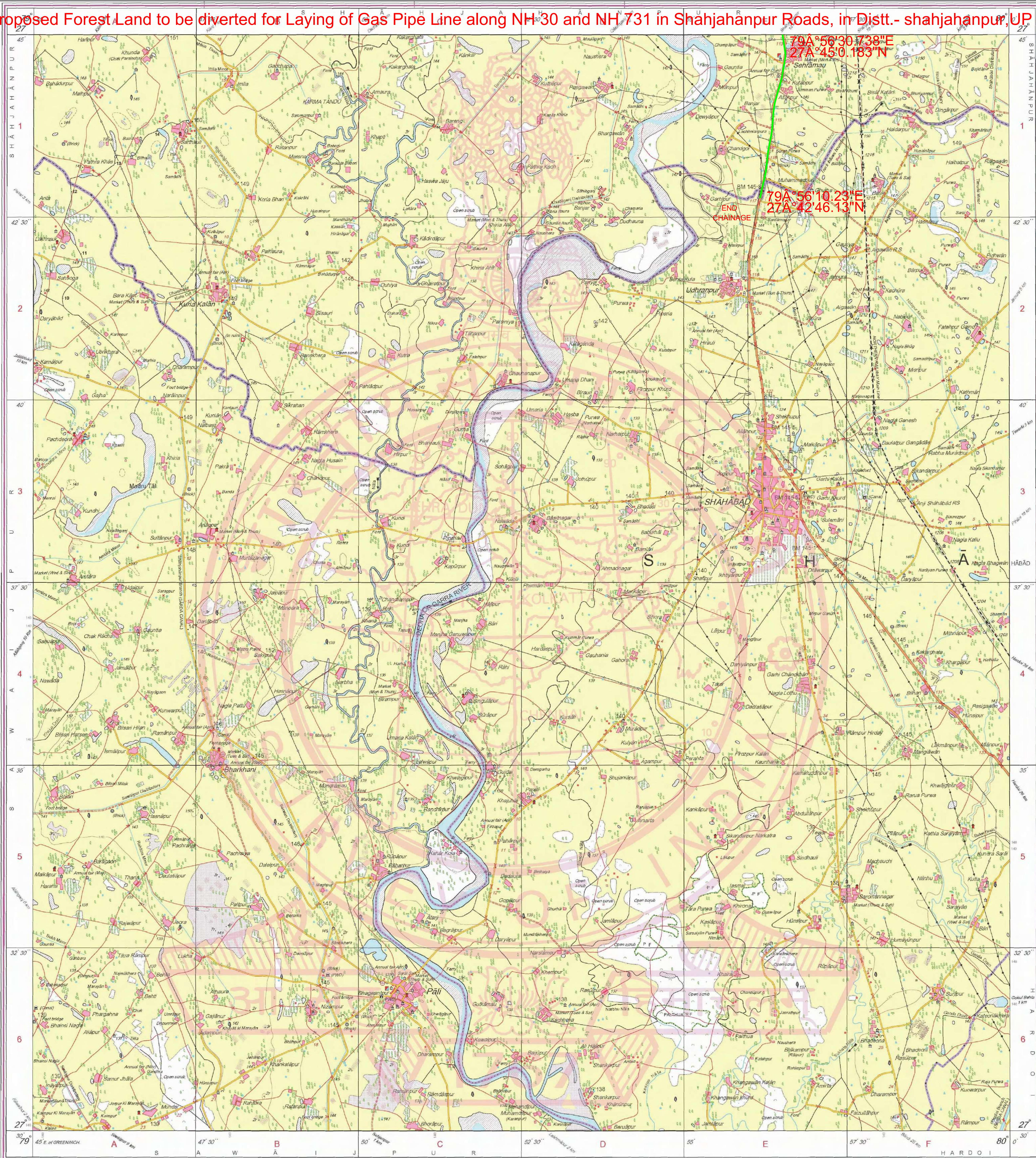
For further details about this map, please contact

Director
Uttarakhand & West Uttar Pradesh Geo-Spatial Data Centre
Survey of India, 17 E. C. Road
Dehra Dun
Fax: 0135 - 2656402

WEBSITE:- www.surveyofindia.gov.in

Reproduction in whole or part by any means is prohibited without the written permission of Survey of India, the National Mapping Agency.

GOVERNMENT OF INDIA COPYRIGHT, 2009



REG. No. P D F - WPG 0709 (Uttarakhand & West UP GDC:1:50,000)

PRINTED AT THE WESTERN PRINTING GROUP OF SURVEY OF INDIA

जी.एच.वी. राव
G.H.V. RAO
उप महाप्रबन्धक-परिचालन एवं बिक्री
Deputy General Manager-Operation And Sales

PROPOSED GAS PIPELINE	APPLICANT AGENCY	Hindustan Petroleum Corporation Limited
PROJECT	SURVEY WORKS AT CGD PROJECT IN UTTAR PRADESH & UTTARAKHAND STATE GAS	
TITLE	PIPELINE ROUTE MAP - SHAHJAHANPUR DISTRICT	
SCALE	1 : 50,000	



Topo Map for Proposed Forest Land to be diverted for Laying of Gas Pipe Line along NH 30 and NH 731 in Shahjahanpur Roads, in Distt.- shahjahanpur, UP

OPEN SERIES
MAP

No. G44C1

Scale 1:50,000

H44T16 (53P/16)	H44U4 (62D/4)	H44U8 (62D/8)
Shahjahanpur UTTAR PRADESH G44B13 (54M/13)	G44C1 (63A/1)	Kheri UTTAR PRADESH G44C5 (63A/5)
G44B14 (54M/14)	Hardoi UTTAR PRADESH G44C2 (63A/2)	G44C6 (63A/6)

1 Pilibhit, UTTAR PRADESH.
2 Shahjahanpur, UTTAR PRADESH.
3 Sitapur, UTTAR PRADESH.

भारतीय सर्वेक्षण विभाग

SURVEY OF INDIA

1st Edition 2008.

Price : Rs. 50/-

CONVENTIONAL SYMBOLS

Express highway; with toll; with bridge; with distance along	
Roads, metalled; according to importance	
Roads, double cartway; according to importance	
Unmetalled road, cart-track, pack-track with pass, foot-path	
Streams; with track in bed; undefined; Canal	
Dams; masonry or rock-filled; weirwork; Water	
River; dry with water channel; with island & rocks; Tidal river	
Submerged rocks; Shoal; Swamp; Reeds	
Wells; hand, windmill, tube-well; Spring; Tank; permanent; dry	
Embankments; road or rail; tanks; Broken ground	
Railways, broad gauge; double; single with distance along	
Railways, other gauge; double; single with distance along	
Mineral line or tramway; Km. Cutting with tunnel	
Contours with sea-levels; Rocky slopes; Cliffs	
Sand Reserves; (1) 1st Class; (2) 2nd Class; (3) 3rd Class; (4) 4th Class	
Towns or Villages; inhabited; deserted; Fort	
Huts; permanent; temporary; Tower; Antenna	
Temples; Chhatra; Church; Mosque; Igloo; Tomb; Grave	
Lighthouses; Lightships; Buoys; lighted; unlighted; Aeronauts	
Mine; Vines on trails; Grass; Scrub	
Palm; palmistry; other; Plantain; Conifer; Bamboo; Other trees	
Areas; cultivated; wooded; Surveyed tree	
Boundary; international	
stone; dunes; sand; undrained	
Boundary; Pillars; surveyed; unsurveyed	
Heights; triangulated; aneroid; police approach	
Beach-mark; groyne; battery; canal	
Post office; Telegraph office; Overhead cable	
Rail house or inspection bungalow; Chouti house; Police station	
Camping ground; Forest; reserved; protected	
Spaced names; administrative; locality or tribal	
Hospital; Dispensary; Veterinary Hospital / Dispensary	
Aerodrome; Heliport; Tourist site	
Power line; with pylons surveyed; with poles unsurveyed	

NOTES

Heights and contours have not been shown.
A relative height, i.e., represents the approximate height, in metres, between the top and bottom of a steep slope.
Unmetalled roads and cart-tracks in this sheet are generally metalled in dry season. Permission to use these roads is required from the local authorities.
Tanks, shown dry, in this area usually contain water from July to December.
Wells and tube-wells are numerous throughout the sheet; only the important ones have been shown.
The distance scale numbers along roads, railways and canals are shown in black e.g., 5, whereas collection numbers are shown in red e.g., 5.5.

Proposed Gas P/L

COMPILED INDEX

A	Surveyed during 1975-76. Updated for major details during 2005-06.
---	--

Projection - UTM Datum - WGS 84

Magnetic Variation from True North about $\frac{1}{2}^{\circ}$ East in 2005.

1:50,000

600 m to 1 cm 2 cm to 1 km

For further details about this map, please contact

Additional Surveyor General

Uttarakhand & West UP Geo-Spatial Data Centre

Survey of India, 17 E.C. Road

Dehra Dun

Fax : 0135 - 2856402

WEBSITE - www.surveyofindia.gov.in

Reproduction in whole or part by any means is prohibited without the written permission of Survey of India, the National Mapping Agency.

GOVERNMENT OF INDIA COPYRIGHT, 2005.



REGD. 458(C)-NPG D-16 (Uttarakhand & West UP) DC-150(008) 191510.

भारत के सर्वेक्षण के विभाग में प्रकाशित,
Published under the direction of Surveyor General of India,
Survey of India, Hattibarkala Estate, Post Box No. 37, Dehra Dun - 248001 (Uttarakhand)
Department of Science & Technology, Government of India.

PRINTED AT THE WESTERN PRINTING GROUP OF SURVEY OF INDIA.

	PROPOSED GAS PIPELINE	APPLICANT AGENCY	Hindustan Petroleum Corporation Limited
	PROJECT	SURVEY WORKS AT CGD PROJECT IN UTTAR PRADESH & UTTARAKHAND STATE GAS	
	TITLE	PIPELINE ROUTE MAP - SHAHJAHANPUR DISTRICT	
	SCALE	1 : 50,000	

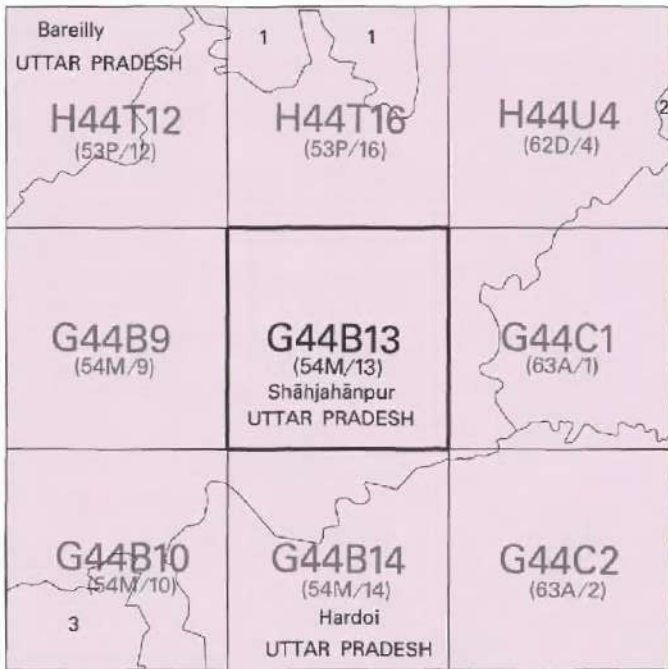
जी.एच.वी. राव
G.H.V. RAO
उप निदेशक-परिचालन एवं वित्त
Deputy General Manager-Operation And Sales



Topo Map for Proposed Forest Land to be diverted for Laying of Gas Pipe Line along NH 30 and NH 731 in Shahjahanpur Roads, in Distt.- shahjahanpur,UP

No. G44B13

Scale 1:50,000



- 1 Pilibhit, UTTAR PRADESH.
- 2 Kheri, UTTAR PRADESH.
- 3 Farrukhabad, UTTAR PRADESH.

भारतीय सर्वेक्षण विभाग

SURVEY OF INDIA

1st Edition 2011.

Price: ₹ 70/-

CONVENTIONAL SYMBOLS

- Express highway: with toll, with bridge, with distance stone
- Road metalled: according to importance
- Roads double carriageway: according to importance
- Unmetalled road, Cart-track, Pack-track with pass, Foot-path
- Stream: with track in bed, unfilled, Canal
- Dams: masonry or rock-filled, earthwork, V-weir
- Submerged rocks, Shoal, Swamp, Reeds
- Wells: lined, unfilled, Tube-well, Spring, Tank, perennial, dry
- Embankments: road or rail, tanks, Broken ground
- Railways, broad gauge: double, single with station, under constn
- Railways, other gauges: double, single with station, under constn
- Mineral line or tramway, Kin, Cutting with tunnel
- Contours with sub-features, Rocky slopes, Cliffs
- Sand features: (Tidal) (Sandy) (Mud) (Silt) (Shallow) (Deep)
- Towns or Villages: inhabited, deserted, Fort
- Haps: permanent, temporary, Tower, Antennae
- Temples, Chhatris, Churches, Mosques, Jaggis, Towers, Grottoes
- Lighthouses, Lightships, Buoys: lighted, unlighted, Aids to navigation
- Mine, Vms on trails, Great, Small
- Palms, palmery, other Plantain, Coffee, Rubber, Other trees
- Areas: cultivated, wooded, Surveyed area
- Boundary, international
- State: demarcated, undemarcated
- District: subdivision, taluk or taluk, forest
- Boundary, Pillars: surveyed, uncoloured
- Height, triangulation: station, point, approximate
- Bench-mark: geodetic, arbitrary, canal
- Post office, Telegraph office, Overhead tank
- Rest house or inspection bungalow, Circuit house, Police station
- Camping ground, Forest: reserved, protected
- Spinal names: administrative, locality or tribal
- Hospital, Dispensary, Veterinary: Hospital / Dispensary
- Aerodrome: Heliped, Tourist site
- Power line: with pylons surveyed, with poles unsurveyed

Proposed Gas P/L in Protected Forest Land

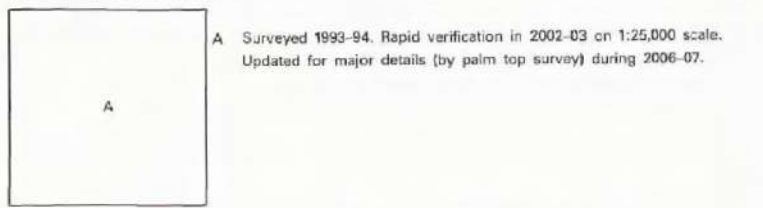
REFERENCES

NH 24 National Highway No. 24, SH 29 State Highway No. 29, SH 25 State Highway No. 25.

NOTES

Height in m. and above Indian mean sea level. Contours are approximate. A relative height, -a, represents the approximate height, in metres, between the top and bottom of a steep slope. The kilometre scale numbers along roads, railways and Shajahanpur Branch (SABRA CANAL) are shown in italic type, e.g. 5.5. Wherever kilometre numbers are shown in upright type, e.g. 5.5. Wells and tube-wells are numerous throughout the sheet, only the important ones have been shown. Tanks, shown dry, in this area, usually contain water from July to December.

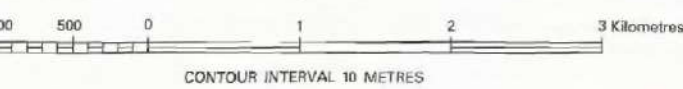
COMPILATION INDEX



Projection - UTM Datum - WGS 84

Magnetic Variation from True North about 1/2° East in 2005.

1:50,000



For further details about this map, please contact

Additional Surveyor General

Uttarakhand and West Uttar Pradesh Geo-Spatial Data Centre

Survey of India, 17 E.C. Road

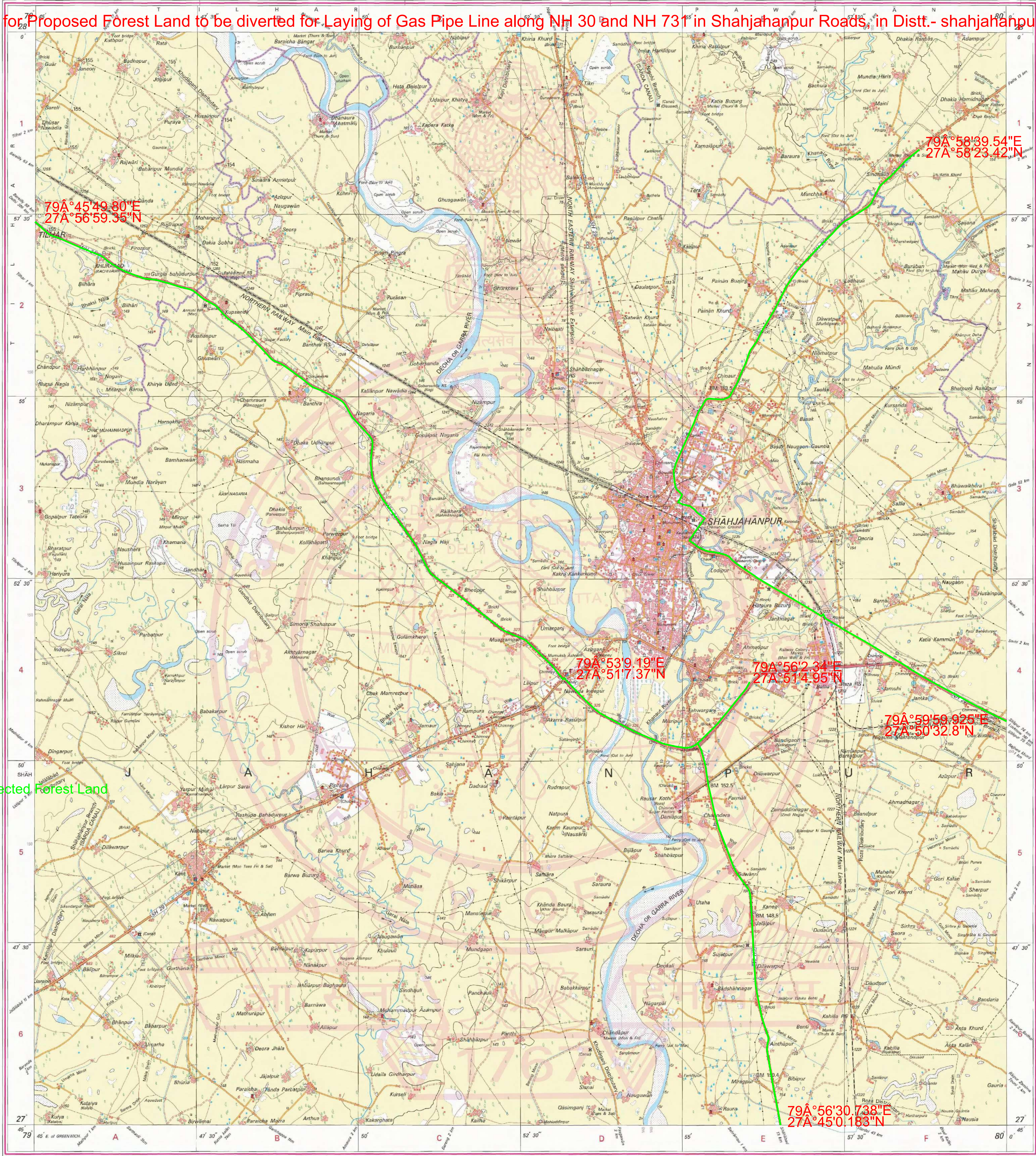
Dehra Dun.

Fax : 0135 - 2656402

WEBSITE - www.surveyofindia.gov.in

Reproduction in whole or part by any means is prohibited without the written permission of Survey of India, the National Mapping Agency.

GOVERNMENT OF INDIA COPYRIGHT, 2011.



जी.एच.वी. राव
G.H.V. RAO
नग महानगरिक-परिचालन एवं विकास
Deputy General Manager-Operation And Sales

PROPOSED GAS PIPELINE	APPLICANT AGENCY	Hindustan Petroleum Corporation Limited
	PROJECT	CITY GAS DISTRIBUTION PROJECT IN SHAHJAHANPUR DISRICT
	TITLE	PIPELINE ROUTE MAP - SHAHJAHANPUR DISTRICT
	SCALE	1 : 50,000



Topo Map for Proposed Forest Land to be diverted for Laying of Gas Pipe Line along NH 30 and NH 731 in Shahjahanpur Roads, in Distt. Shahjahanpur, UP

OPEN SERIES
MAP

No. H44T12

Scale 1:50,000

H44T7 (53P/7)	H44T11 (53P/11)	H44T15 (53P/15)
H44T8 (53P/8)	H44T12 (53P/12)	H44T16 (53P/16)
G44B5 (54M/5)	G44B9 (54M/9)	G44B13 (54M/13)

भारतीय सर्वेक्षण विभाग

SURVEY OF INDIA

1st Edition 2011.

Price: ₹ 77/-

CONVENTIONAL SYMBOLS

Express highway with toll; with bridge, with distance stone	27
Roads, metalled; according to importance	28
Roads, double carriageway; according to importance	29
Unmetalled road; Cart-track; Pack-track with new foot-path	30
Stream with track in bed; unmetalled; Canal	31
Dam; masonry or rock-filled; earthwork; Wall	32
River; dry with water channel; with island & rocks; Tidal river	33
Submerged rocks; Shoal; Swamp; Reeds	34
Well; lined; unlined; Tube-well; Spring; Tanks; perennial; dry	35
Embankments: road or rail; bank; Broken ground	36
Railways, broad gauge; double single with station; under constr.	37
Railways, other gauges; double; single with distance stone; de	38
Mineral line or tramway; Km. Cutting with tunnel	39
Contours with sub-features; Rocky slopes; Cliffs	40
Sand features: (flats, dunes, hills, spurs, etc.) (dunes, hills, spurs, etc.)	41
Towns or Villages: inhabited; deserted; Fort	42
Hill: permanent; temporary; Tower; Antiquities	43
Temple; Chhatra; Church; Mosque; Ulgah; Tomb; Graves	44
Lighthouses; Lightships; Buoys; lights; unlighted; Anchorage	45
Mine; Vine on mounds; Grass; Scrub	46
Palms; palm-trees; other; Pines; Conifers; Bamboo; Other trees	47
Areas: cultivated; wooded; Surveyed tree	48
Boundary, international	49
state; demarcated; undemarcated	50
district; subdivision; tahsil or taluk; forest	51
Boundary, Pillars: surveyed; uncollected	52
Height, triangulation station; point; approximate	53
Bench-mark; geodetic; tertiary; canal	54
Post office; Telegraph office; Overhead tank	55
Rest house or inspection bungalow; Circuit house; Police station	56
Camping ground; Forest; reserved; protected	57
Succed names: administrative; locality or tribal	58
Hospital; Dispensary; Veterinary; Hospital / Dispensary	59
Aerodromes; Helipad; Tourist site	60
Power line; with pylons surveyed; with poles unsurveyed	61

Proposed Gas P/L in Protected Forest Land

REFERENCE

NH 24
PWD
Public Work Department, Chy. Chennay.

NOTES :-

Heights and contours have not been shown.
A relative height, 'R', represents the approximate height, in metres, between the top and bottom of a steep slope.
The kilometre stone numbers along the roads/railways/canals and drains are shown in state type, 'S', whereas milestone numbers are shown in upright type, 'U'.
The area adjoining the Ramganga river is liable to change owing to continual accretion in the course of the river.
Unmetalled roads and cart-tracks are motorable in dry season. Permission to use cart-tracks along canals is required from the Irrigation authorities.
Tensatometer depth this area, usually contain water from July to December.
Wells are numerous throughout the sheet, only the important ones have been shown.
Perennial streams in this sheet are fordable from October to June at places indicated as such.

COMPILATION INDEX

A. Compiled from 1:25,000 scale survey during 1987-88. Updated for major details during 2006-07.



Projection - UTM Datum - WGS 84

Magnetic Variation from True North about 1/2° East in 2005.

1:50,000

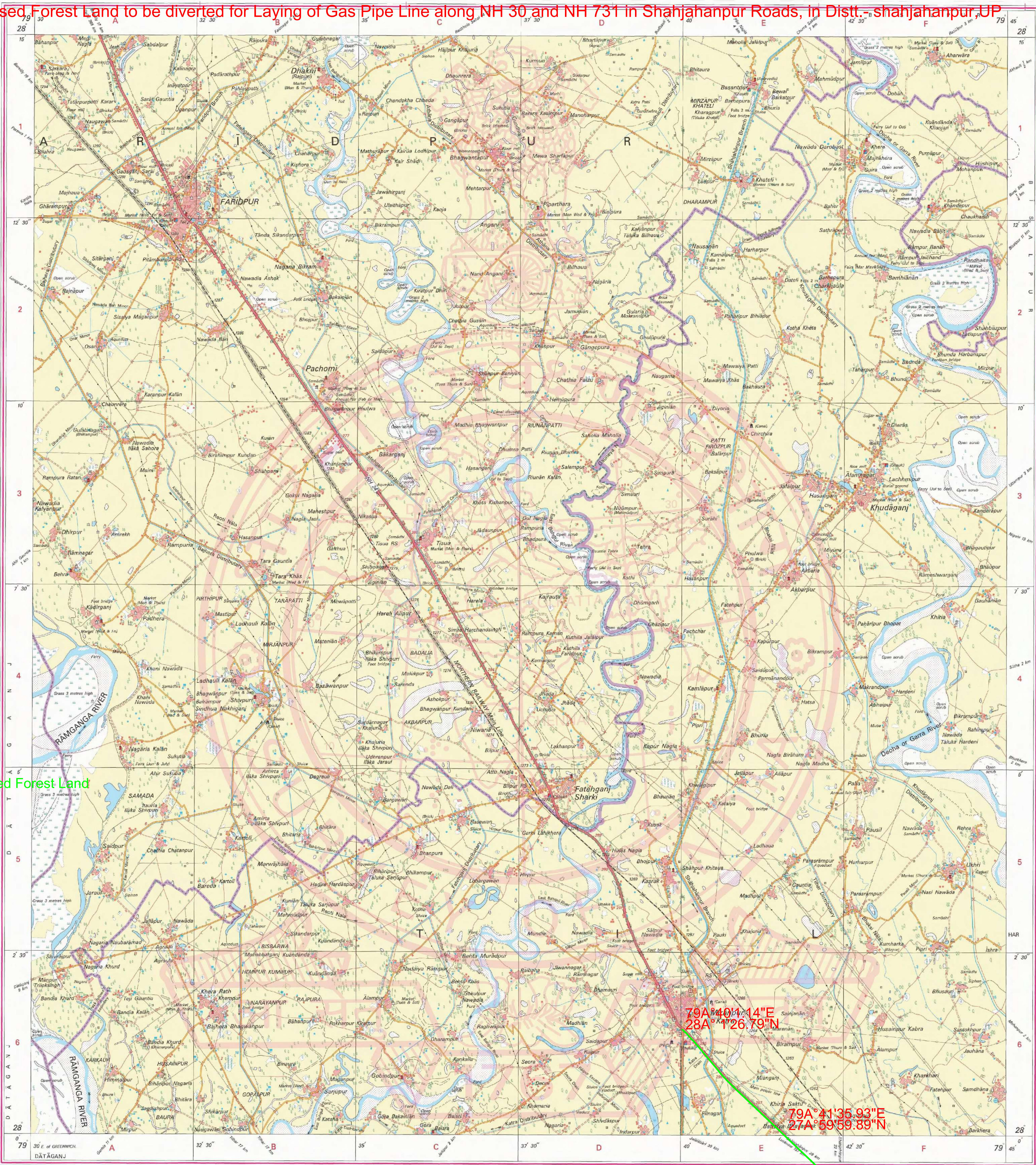
Metres 1000 500 0 1 2 3 Kilometres

For further details about this map, please contact

Director
Uttarakhand & West Uttar Pradesh Geo-Spatial Data Centre
Survey of India, 17 E.C. Road, Karanpur
Dehra Dun.

WEBSITE - www.surveyofindia.gov.in

Reproduction in whole or part by any means is prohibited
without the written permission of Survey of India, the
National Mapping Agency.



G.H.V. RAO
Deputy General Manager-Operation And Sales

PROPOSED GAS PIPELINE	APPLICANT AGENCY	Hindustan Petroleum Corporation Limited
PROJECT	CITY GAS DISTRIBUTION PROJECT IN SHAHJAHANPUR DISTRICT	
TITLE	PIPELINE ROUTE MAP - SHAHJAHANPUR DISTRICT	
SCALE	1 : 50,000	