

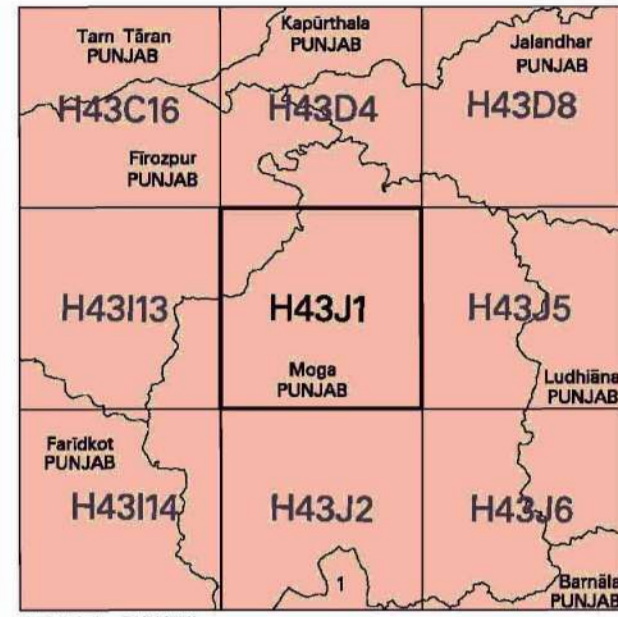
Four Laning of Moga - Bajakhana (Lambwali) Section of NH-105B Paved Shoulder from Ch. 0+000 to Ch. 42+733 under BHARATMALA Pariyojna, (Package-IV) in the State of Punjab on Hybrid Annuity Mode



OPEN SERIES MAP

No. H43J1

Scale 1:50,000



भारतीय सर्वेक्षण विभाग SURVEY OF INDIA

1st Edition 2008. Price : Rs. 50/-

CONVENTIONAL SYMBOLS

Express Highway with toll, with bridge, with distance stone	
Roads, metalled according to importance	
Unmetalled road, Cart-track, Path, road with stone floor, Foot-path	
Streams: with bank in bed, unbridged, Canal	
Canal: masonry or rock-lined, earthenwork, Well	
River: dry with water channel, with island & rocks, Tidal river	
Submerged rocks, Shoal, Swamp, Reeds	
Wells: fringed, salted, Tube-well, Spring, Tanka, perennial, dry	
Embankments: road or rail, bank, Broken ground	
Railways, broad gauge: double, single with station, under construction	
Railways, other gauges: double, single with distance stone, etc.	
Mineral line or tramway, Km. Cutting with tunnel	
Contours with sea-level, Ready slopes, Cliff	
Small features: (Shaded) hills (green), (Black) hills	
Towns or Villages: inhabited, deserted, Fort	
Hotel, permanent, temporary, Tower, Antenna, etc.	
Temple, Church, Mosque, Ghat, Tomb, Graves	
Lighthouse, Lightship, Buoy: lighted, unlighted, Anchorage	
Mine: View on track, Grist, Sand	
Palms: palmyra, other, Plantain, Cocoa, Bamboo, Other trees	
Areas: cultivated, wooded, Surveyed tree	
Boundary: International, Surveyed tree	
Water: dammed, undammed	
Electric station, wind or solar farm	
Secondary places: unpopulated, village, hamlet	
Heights, triangulation, station, point, approximates	
bench-mark, geodetic, leveling, canal	
Post office, Telegraph office, Overhead tank	
Rest house or inspection bungalow, Chief house, Police station	
Camping ground, Forest reserved, protected	
Special names: administrative, locality or tribal	
Hospital, Dispensary, Veterinary hospital	
Aerodrome, Helipad, Tourist site	
Power line, with pylons surveyed, with poles unsurveyed	

REFERENCE

NH 71 National Highway No. 71

NOTES :-

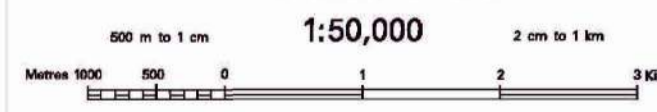
A relative height, \pm , represents the approximate height, in metres, between the top and bottom of a steep slope.
 Tanks, shown dry, in this area usually contain water from July to March.
 Permission to use cart-roads and unmetalled roads along canals is required from the irrigation authorities.
 Canal distance stones are 1200 feet apart and every reading with stone is shown.
 A relative height, e.g., ± 30 , marked along canal indicates the height of the top of canal embankment above the adjacent country.
 Tube-wells are numerous throughout the sheet; only the important ones have been shown.

COMPLIATION INDEX

A	Surveyed during 1960-67, Updated for major details during 2005-08
---	---

Projection - UTM Datum - WGS 84

Magnetic Variation from True North about 1 $^{\circ}$ East in 2005. (Decreases by about 1" annually).

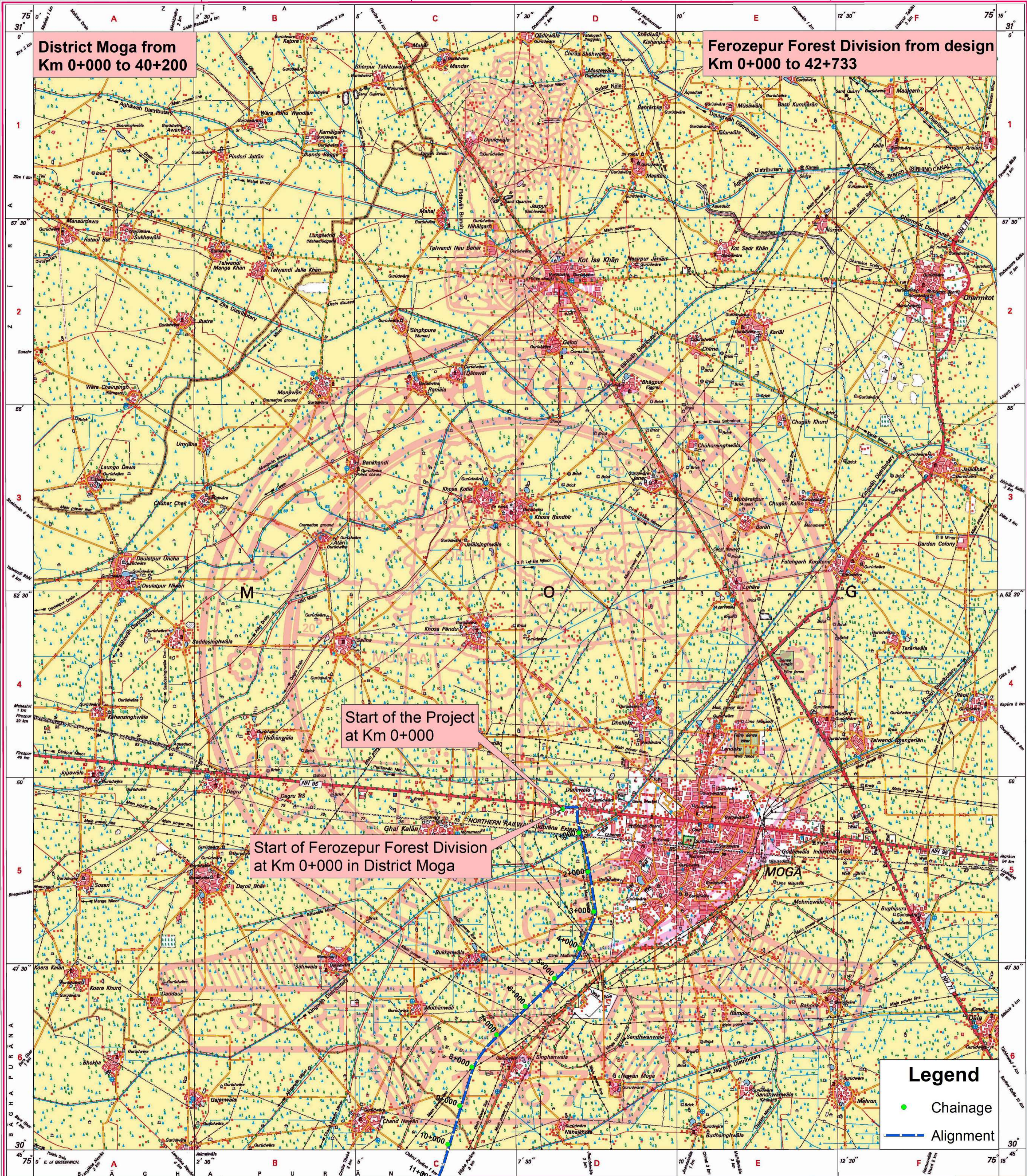


For further details about this map, please contact
 Director
 Punjab & Chandigarh Geo-Spatial Data Centre
 Survey of India, Sector 32 A
 Chandigarh.
 Fax : 0172 - 2608918

WEBSITE - www.surveyofindia.gov.in

Reproduction in whole or part by any means is prohibited without the written permission of Survey of India, the National Mapping Agency.

GOVERNMENT OF INDIA COPYRIGHT, 2008.



Legend

- Chainage
- Alignment

परियोजना निदेशक / Project Director
 भारतीय राष्ट्रीय राजमार्ग प्राधिकरण
 National Highways Authority of India
 प.का.ई.-बठिंडा/PIU-Bathinda

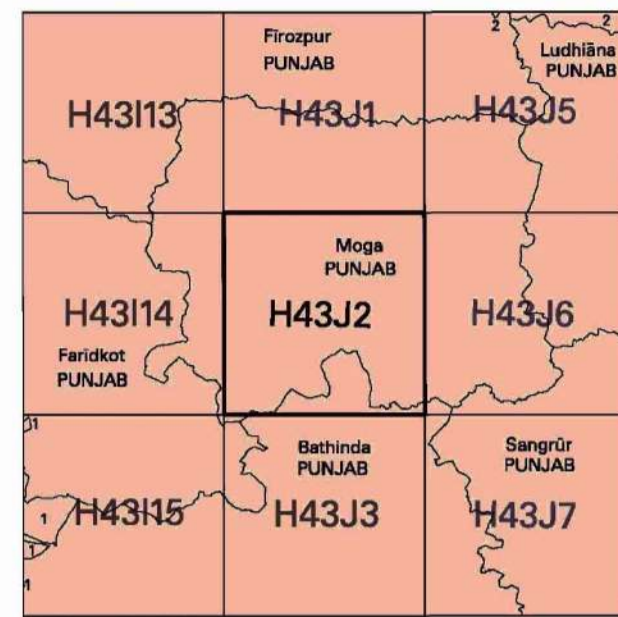
PRINTED AT THE WESTERN PRINTING GROUP OF SURVEY OF INDIA.

Prepared under the direction of Dr. Pritivish Nag, Surveyor General of India, India, H88Barkala Estate, Post Box No. 37, Dehra Dun - 248001 (Uttarakhand), Department of Science & Technology, Government of India.

**Four Laning of Moga - Bajakhana (Lambwali) Section of NH-105B Paved Shoulder from
Ch. 0+000 to Ch. 42+733 under BHARATMALA Pariyojna, (Package-IV) in the State of Punjab on Hybrid Annuity Mode**



No. H43J2
Scale 1:50,000



भारतीय सर्वेक्षण विभाग SURVEY OF INDIA

1st Edition 2007. Price : Rs. 50/-

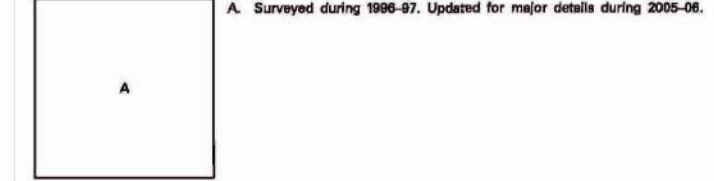
CONVENTIONAL SYMBOLS

- Express highway, with toll; with bridge; with distance stone
- Road, metalled according to importance
- Road, double cartage-way according to importance
- Unmetalled road, Car-track, Foot-track with pass, Foot-path
- Stream: with track to bed; unforded; Canal
- Dam: masonry or rock-filled; earthwork; Well
- River: dry with water channel; with island & rocks; Tidal river
- Submerged weir; dam; Barrage; Weir
- Well: hand, windmill, Tube-well, Spring, Tank; perennial; dry
- Embankment: road or rail; bank; Broken ground
- Railways, broad gauge: double; single with station/under cover
- Railways, other gauges: double; single with distance stone; do
- Mineral line or tramway, K.M. Cutting with tunnel
- Contours with sub-features: Rocky slopes, Cliff
- Sand features: (Dune) (Sand-hill) (Sandbar) (Sand-shifting)
- Towns or Villages: inhabited; deserted; Fort
- Note: permanent; temporary; Tower; Antiquities
- Temple; Chhatra; Church; Mosque; High Tomb; Graves
- Lighthouse; Uplights; River; Spring; original; Antiquities
- Mine: View on track; Grass; Sand
- Palms; palm-tree; other; Plantain; Cactus; Bamboo; Other trees
- Areas: cultivated; wooded; Surveyed tree
- Boundary: International
- State: demarcated; undemarcated
- District; subdivision; taluk or taluk forest
- Boundary pillars: surveyed; unlocated; village trifunction
- Height: interquanted; station; point; approximation
- Bench-mark: geodetic; tertiary; canal
- Post office; Telegraph office; Overhead tank
- Rest house or travellers bungalow; Court house; Police station
- Camping ground; Forest; reserved; protected
- Speed name: administrative; locality or taluk
- Hospital; Dispensary; Veterinary hospital
- Aerodrome; Helipad; Tourist site
- Power line: with poles surveyed; with poles unsurveyed

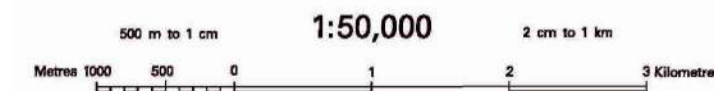
NOTES :-

Permission to use cart-racks and unmetalled roads along canals is required from the irrigation authorities. A relative height, e.g., 3' marked along a canal, indicates the height of the top of the canal embankment above the adjacent country.
Canal distance stones are 5,000 feet apart and every existing stone is shown.
Tide-gauges are numerous throughout the sheet only the important ones have been shown.
A relative height, e.g., 3' represents the approximate height, in metres between the top and bottom of a steep slope.
Tanks shown dry, in this area usually contain water from July to December.

COMPILED INDEX



Projection - UTM Datum - WGS 84
Magnetic Variation from True North about 1° East in 2005.
(Increasing by about 1' annually).

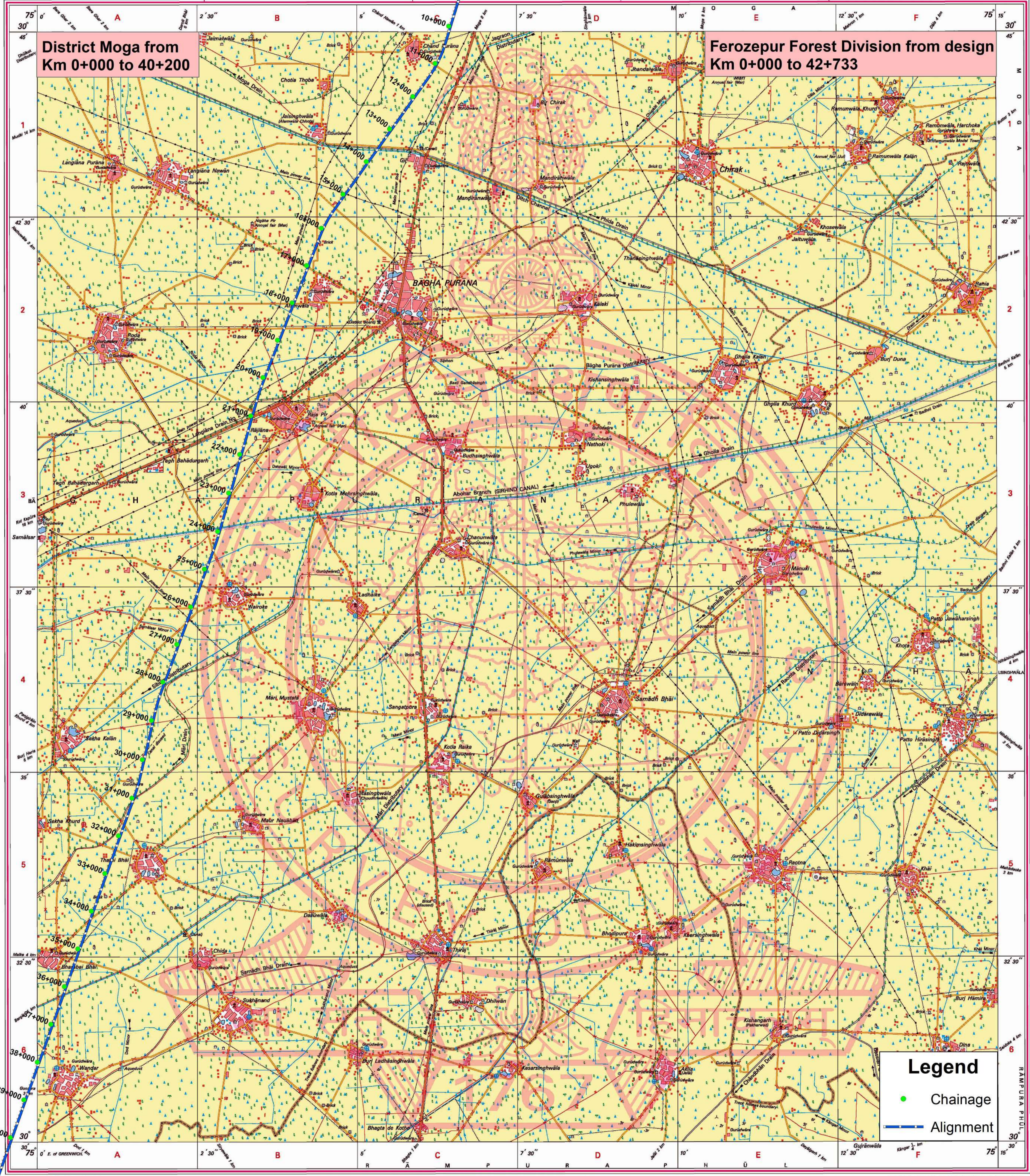


For further details about this map, please contact
Director
Punjab & Chandigarh Geo-Spatial Data Centre
Survey of India, Sector 32 A
Chandigarh.
Fax : 0172 - 2608916

WEBSITE - www.surveyofindia.gov.in

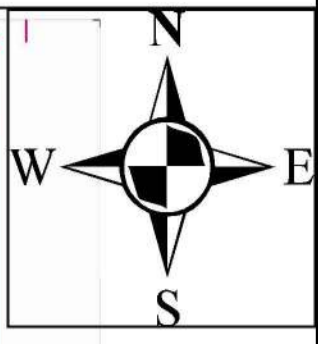
Reproduction in whole or part by any means is prohibited without the written permission of Survey of India, the National Mapping Agency.

GOVERNMENT OF INDIA COPYRIGHT, 2007.



Legend

- Chainage
- Alignment



परियोजना निदेशक / Project Director
भारतीय राष्ट्रीय राजमार्ग प्राधिकरण
National Highways Authority of India
प.कां.ई-बठिंडा/PIU-Bathinda

Four Laning of Moga - Bajakhana (Lambwali) Section of NH-105B Paved Shoulder from Ch. 0+000 to Ch. 42+733 under BHARATMALA Pariyojna, (Package-IV) in the State of Punjab on Hybrid Annuity Mode



OPEN SERIES MAP
No. H43115
 Scale 1:50,000

Feridkot PUNJAB H43110	Moga PUNJAB H43114	Moga PUNJAB H43112
Muktsar PUNJAB H43111	H43115	H43113
H43112	Bathinda PUNJAB H43116	H43114

1 Ferozpur, PUNJAB.

भारतीय सर्वेक्षण विभाग SURVEY OF INDIA
 1st Edition 2007. Price : Rs. 50/-

CONVENTIONAL SYMBOLS

Express highway with toll, with bridge with distance stone	
Road, metalled according to importance	
Road, double cartway, according to importance	
Unmetalled road, Cart-track, Pack-track with pass, Foot-path	
Spurs with track to track, road, Canal	
Dam, masonry or rock-fill, earthen, Well	
River, dry with water channel, with island & rocks, Tidal river	
Submerged rocks, Shoal, Swamp, Reeds	
Wells, hand, tubewell, Spring, Tank, perennial, dry	
Embankment, road or rail, bank, Broken ground	
Railways, broad gauge, double, single with distance stone, etc.	
Railways, other gauges, double, single with distance stone, etc.	
Mineral line or tramway, K.K. Cutting with tunnel	
Contours with sea features, Rocky slopes, C.R.R.	
Sand features, (Khan) Dunes, Hills, Settlements, (Dhara) Settlements	
Towns or Villages, Metalled, gravelled, Foot	
Mark permanent, temporary, Tower, Antenna	
Temples, Dharm, Church, Mosque, Light, Tomb, Green	
Lighthouses, Lightships, Buoy, lighted, unlighted, Anchorage	
Min. Vies on traffic, Green, Sunk	
Palms, cactus, other, Plantain, Cane, Bamboo, Other trees	
Areas, cultivated, wooded, Surveyed tree	
Boundaries, International	
State, demarcated, undemarcated	
district, sub-division, taluk or tehsil, forest	
Police, surveyed, uncoloured, village, settlement	
Height, Mean Sea Level, spot, approximate	
Barometric, aneroid, barometric, aneroid, in metres, between the top and bottom of a steep slope	
Post office, Telegraph office, Overhead tank	
Rail house or inspection bungalow, Circuit house, Police station	
Camping ground, Forest reserved, protected	
Spaced names, administrative, locality or tribal	
Hospital, Dispensary, Veterinary hospital	
Aerodrome, Helipad, Tourist site	
Power line, with pylons surveyed, with poles unsurveyed	

REFERENCE
 NH 105 National Highway No. 105

NOTES :-
 All cart-tracks and unmetalled roads in this sheet are generally motorable in dry season. Permission to use these roads should be obtained from the Irrigation authorities.
 A relative height, if necessary, is marked in metres, between the top and bottom of a steep slope.
 Table shown on this sheet usually contain water from July to December.
 Tube-wells are numerous throughout the sheet, only the important ones have been shown.
 A relative height, e.g. 10, marked along a canal, indicates the height of the top of the canal embankment above the adjacent country.

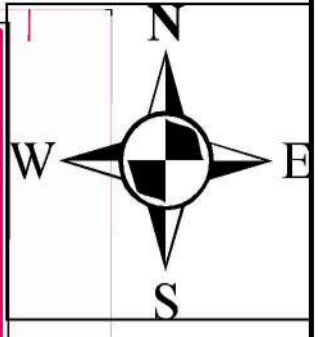
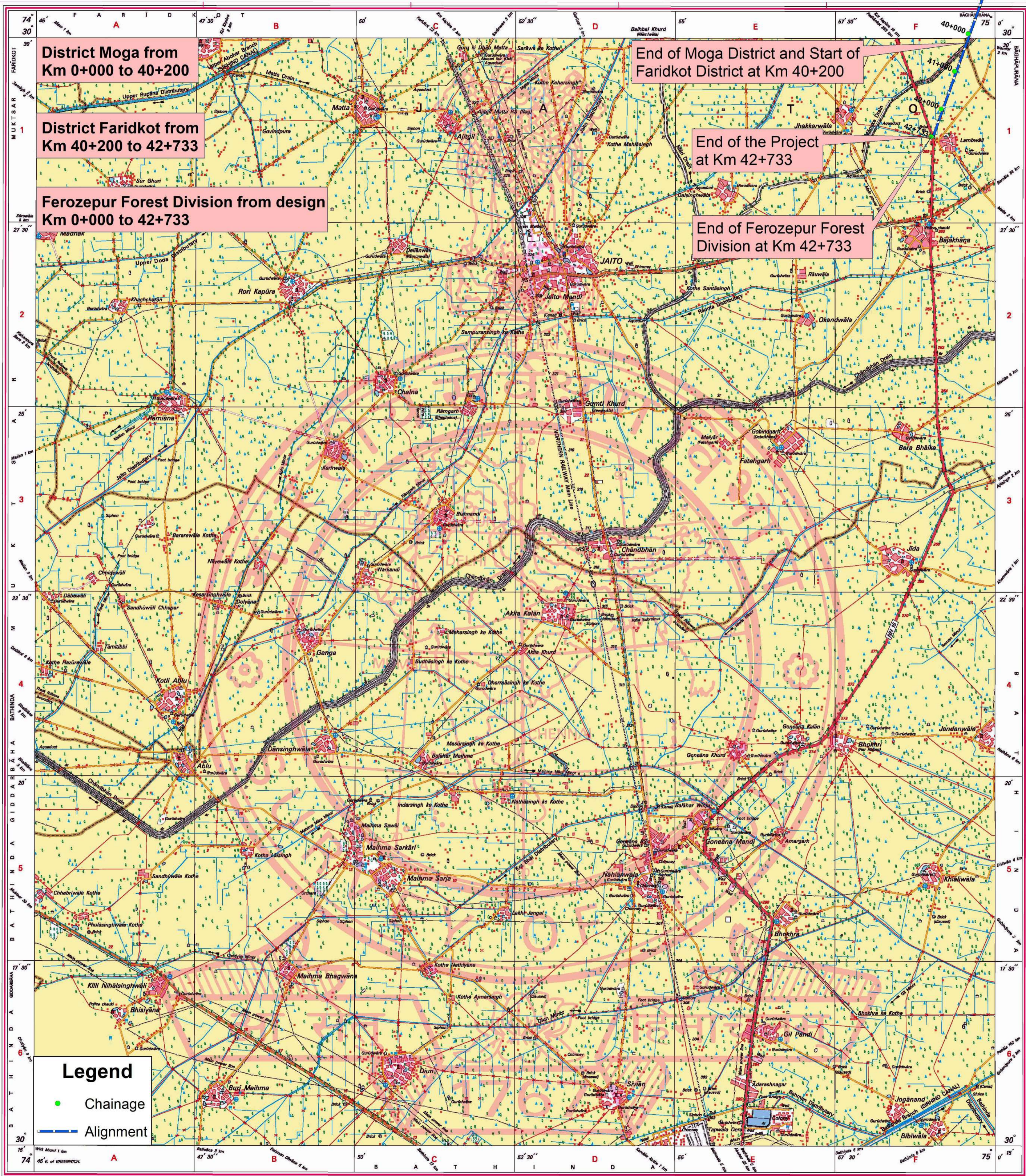
COMPILATION INDEX

A	Surveyed during 1967-68.
---	--------------------------

Projection - UTM Datum - WGS 84
 Magnetic Variation from True North about 1° East in 2000.
 (Increasing by about 2' annually.)
 1:50,000
 500 m to 1 cm

For further details about this map, please contact
 Director
 Punjab & Chandigarh Geo-Spatial Data Centre
 Survey of India, Sector 32 A
 Chandigarh.
 Fax : 072 - 2606916

WEBSITE - www.surveyofindia.gov.in
 Reproduction in whole or part by any means is prohibited without the written permission of Survey of India, the National Mapping Agency.
 GOVERNMENT OF INDIA COPYRIGHT, 2007.



परियोजना निदेशक / Project Director
 भारतीय राष्ट्रीय राजमार्ग प्राधिकरण
 National Highways Authority of India
 प.का.ई-बठिंडा/PIU-Bathinda